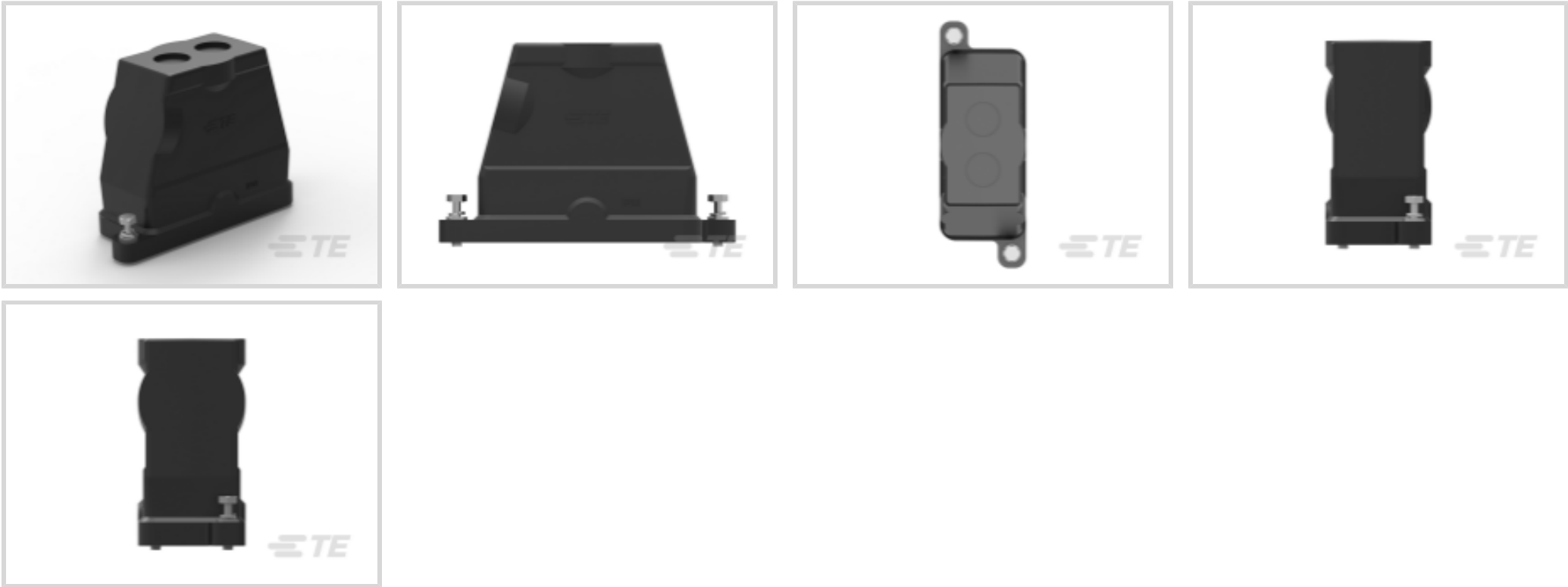




Connectors > Rectangular Connectors > Rectangular Connector Hoods & Bases



Hood & Base Connector Product Type: **Hood**

Cable Entry Location: **Top & Side**

Hood & Base Locking Device Type: **Screwlock**

Sealable: **Yes**

EU RoHS Compliance: **Compliant**

Features

Mechanical Attachment

Thread Size	2M25
Locking Device Location	Housing
Hood & Base Locking Device Type	Screwlock

Product Type Features

Hood & Base Connector Product Type	Hood
Sealable	Yes

Body Features

Cable Entry Location	Top & Side
----------------------	------------

Other

EU RoHS Compliance	Compliant
EU ELV Compliance	Compliant

Product Compliance

[For compliance documentation, visit the product page on TE.com>](#)

EU RoHS Directive 2011/65/EU	Compliant
------------------------------	-----------



EU ELV Directive 2000/53/EC	Compliant
China RoHS 2 Directive MIIT Order No 32, 2016	No Restricted Materials Above Threshold
EU REACH Regulation (EC) No. 1907/2006	Current ECHA Candidate List: JUNE 2024 (241) Candidate List Declared Against: JUNE 2024 (241) Does not contain REACH SVHC
Halogen Content	BFR/CFR/PVC Free, but Br/Cl >900 ppm in other sources.
Solder Process Capability	Not reviewed for solder process capability

Product Compliance Disclaimer

This information is provided based on reasonable inquiry of our suppliers and represents our current actual knowledge based on the information they provided. This information is subject to change. The part numbers that TE has identified as EU RoHS compliant have a maximum concentration of 0.1% by weight in homogenous materials for lead, hexavalent chromium, mercury, PBB, PBDE, DBP, BBP, DEHP, DIBP, and 0.01% for cadmium, or qualify for an exemption to these limits as defined in the Annexes of Directive 2011/65/EU (RoHS2). Finished electrical and electronic equipment products will be CE marked as required by Directive 2011/65/EU. Components may not be CE marked. Additionally, the part numbers that TE has identified as EU ELV compliant have a maximum concentration of 0.1% by weight in homogenous materials for lead, hexavalent chromium, and mercury, and 0.01% for cadmium, or qualify for an exemption to these limits as defined in the Annexes of Directive 2000/53/EC (ELV). Regarding the REACH Regulation, the information TE provides on SVHC in articles for this part number is based on the latest European Chemicals Agency (ECHA) 'Guidance on requirements for substances in articles' posted at this URL: <https://echa.europa.eu/guidance-documents/guidance-on-reach>

Compatible Parts



TE Part # T3609250102-000
DLX-25-M



TE Part # T1930160000-000
H16BPR-AG



TE Part # T2040162101-000
HE-016-M

Customers Also Bought



TE Part #T0924015115-000
H6BPR-1P-350-FRAME



TE Part #T1910160140-009
H16BPR-TSH-M40-EMC-C



TE Part #T1930160000-009
H16BPR-AG-EMC-C



TE Part #T2193502120-000
HCM350-FC-120



TE Part #T2193503101-000
HCM350-MC



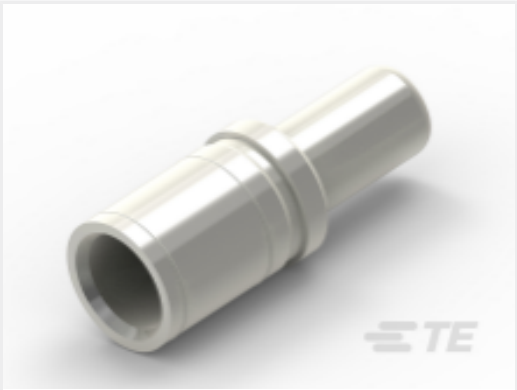
TE Part #T3707160101-000
DLX-16-MS (10~14)



TE Part #T4151320005-001
RPC-M12-FS-5CON-PUR-0.5



TE Part #T0924027845-000
H16BPR-2P-350-FRAME



TE Part #T2193501120-000
HCM350-MC-120



TE Part #T2193503201-000
HCM350-FC

Documents

Product Drawings

H16BPR-TGH-2M25

English

CAD Files

3D PDF

3D

Customer View Model

ENG_CVM_CVM_T1920160225-000_A.2d_dxf.zip

English

Customer View Model

ENG_CVM_CVM_T1920160225-000_A.3d_igs.zip

English

Customer View Model

ENG_CVM_CVM_T1920160225-000_A.3d_stp.zip

English

By downloading the CAD file I accept and agree to the [Terms and Conditions](#) of use.

Datasheets & Catalog Pages

HEAVY DUTY CONNECTORS

English

HEAVY DUTY CONNECTORS

Japanese

Heavy Duty Connectors - HCM/IP68 Hoods/Housing Series

English

Product Specifications



Application Specification

English

Application Specification