



Product Compliance

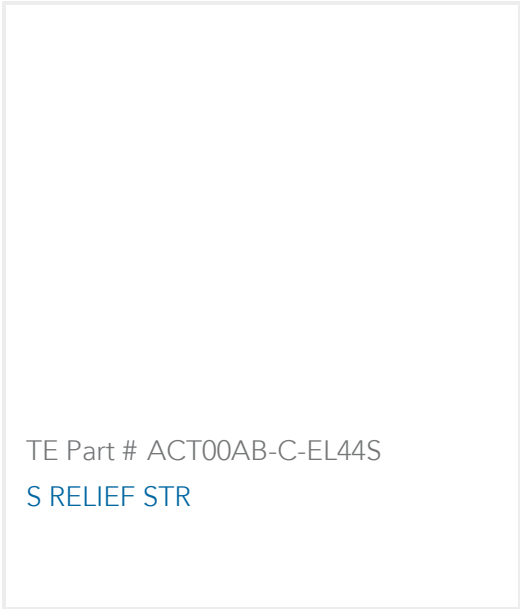
[For compliance documentation, visit the product page on TE.com>](#)

EU RoHS Directive 2011/65/EU	Compliant
EU ELV Directive 2000/53/EC	Compliant
China RoHS 2 Directive MIIT Order No 32, 2016	No Restricted Materials Above Threshold
EU REACH Regulation (EC) No. 1907/2006	Current ECHA Candidate List: JUNE 2024 (241) Candidate List Declared Against: JUNE 2022 (224) Does not contain REACH SVHC
Halogen Content	Not Yet Reviewed for halogen content
Solder Process Capability	Not reviewed for solder process capability

Product Compliance Disclaimer

This information is provided based on reasonable inquiry of our suppliers and represents our current actual knowledge based on the information they provided. This information is subject to change. The part numbers that TE has identified as EU RoHS compliant have a maximum concentration of 0.1% by weight in homogenous materials for lead, hexavalent chromium, mercury, PBB, PBDE, DBP, BBP, DEHP, DIBP, and 0.01% for cadmium, or qualify for an exemption to these limits as defined in the Annexes of Directive 2011/65/EU (RoHS2). Finished electrical and electronic equipment products will be CE marked as required by Directive 2011/65/EU. Components may not be CE marked. Additionally, the part numbers that TE has identified as EU ELV compliant have a maximum concentration of 0.1% by weight in homogenous materials for lead, hexavalent chromium, and mercury, and 0.01% for cadmium, or qualify for an exemption to these limits as defined in the Annexes of Directive 2000/53/EC (ELV). Regarding the REACH Regulation, the information TE provides on SVHC in articles for this part number is based on the latest European Chemicals Agency (ECHA) 'Guidance on requirements for substances in articles' posted at this URL: <https://echa.europa.eu/guidance-documents/guidance-on-reach>

Compatible Parts



Also in the Series | [DEUTSCH 38999 Series III](#)

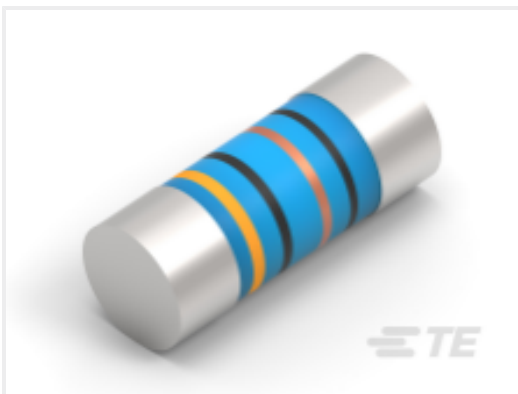


Standard Circular Connectors(9165)

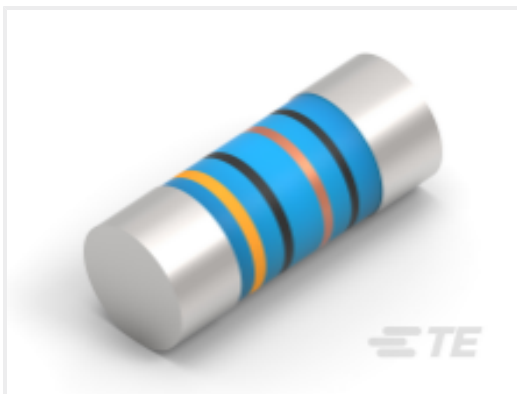
Customers Also Bought



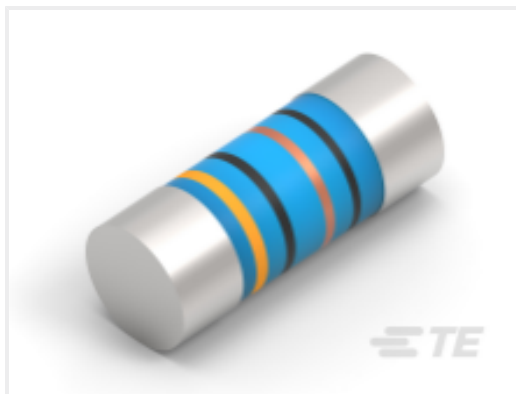
TE Part #5748676-2
DIE CAST CBL CLMP KIT,SZ 2



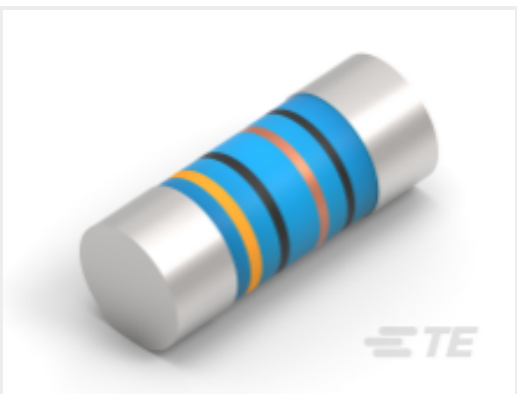
TE Part #2176315-1
MELF SMA_A 100R 0.1% 15PPM 0204 0.4W



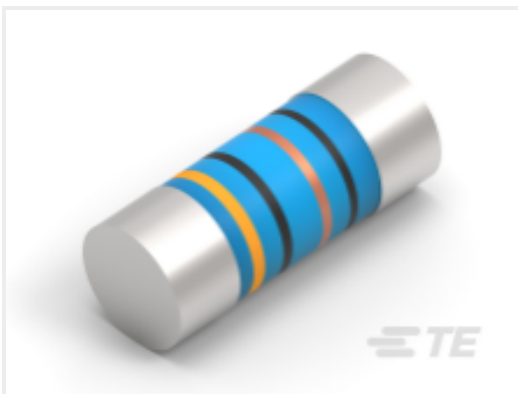
TE Part #1-2176315-3
MELF SMA_A 1K0 0.1% 15PPM 0204 0.4W



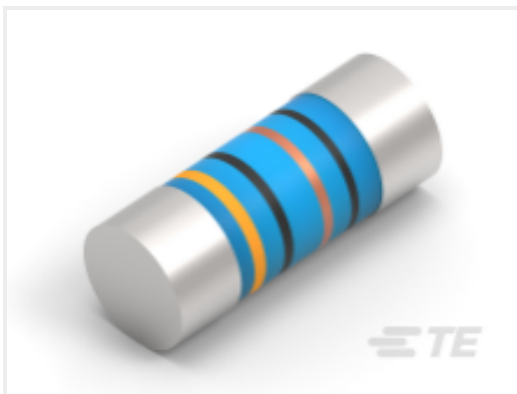
TE Part #1-2176315-9
MELF SMA_A 3K3 0.1% 15PPM 0204 0.4W



TE Part #2176316-1
MELF SMA_A 100R 0.1% 15PPM 0207 1W



TE Part #2-2176316-9
MELF SMA_A 22K 0.1% 15PPM 0207 1W



TE Part #1-2176316-9
MELF SMA_A 3K3 0.1% 15PPM 0207 1W



TE Part #4-2176215-5
CPF A 0402 68K 0.1% 25PPM 1K RL



TE Part #ZPF000000000016911
DTS 26 F 11-35 SN



TE Part #20024289-00
K10-HS20V6B-06k0-D05 FSW

Documents

CAD Files

3D PDF

3D

Customer View Model

ENG_CVM_CVM_ACT00MB-B-EL00N_99_c-act00mb-b-el00n-99.2d_dxf.zip

English

Customer View Model

ENG_CVM_CVM_ACT00MB-B-EL00N_99_c-act00mb-b-el00n-99.3d_igs.zip



English

Customer View Model

[ENG_CVM_CVM_ACT00MB-B-EL00N_99_c-act00mb-b-el00n-99.3d_stp.zip](#)

English

By downloading the CAD file I accept and agree to the [Terms and Conditions](#) of use.

Datasheets & Catalog Pages

MATERIAL AND FINISH DETAILS

English