



Connectors > Power Connectors > Circular Power > Circular Power Connectors



Number of Positions: **16**

Connector Product Type: **Housing**

Operating Voltage: **600 VDC**

Wire Size: **.05 – .2 mm<sup>2</sup>**

Features

Packaging Features

Packaging Quantity	10
Packaging Method	Box

Mechanical Attachment

Mating Retention Type	Threaded Coupling
Thread Size	1-3/16-18 UNEF-2A
Polarization Code	A
Mating Alignment Type	Keyed
Mating Alignment	With
Connector Mounting Type	Cable Mount (Free-Hanging)
Mating Retention	With
Panel Mount Feature	Without

Housing Features

Body Orientation	Straight
Housing Color	Black
Housing Material	Thermoplastic



Circular Connector Shell Size	22
Dimensions	
Compatible Insulation Diameter Range	2.54 mm[.1 in]
Wire Size	.05 – .2 mm <sup>2</sup>
Configuration Features	
Reverse Numbering	Without
Number of Positions	16
Number of Power Positions	0
Number of Signal Positions	16
Product Type Features	
Connector Product Type	Housing
Connector System	Wire-to-Wire
Sealable	No
Connector & Contact Terminates To	Wire & Cable
Connector & Housing Type	Plug
Circular Connector Shell Type	Metal-Shell
Electrical Characteristics	
Operating Voltage	600 VAC
Contact Features	
Reverse Gender	No
Contact Type	Socket
Contact Current Rating (Max)	13 A
Contact Protection	With
Termination Features	
Termination Method to Wire & Cable	Crimp & Solder
Usage Conditions	
Operating Temperature Range	-55 – 125 °C[-67 – 257 °F]
Fluid Resistance	None
Operation/Application	
Circuit Application	Power & Signal
Shielded	No



Industry Standards

UL Flammability Rating	UL 94V-0
------------------------	----------

Other

EU RoHS Compliance	Compliant
EU ELV Compliance	Compliant

Product Compliance

For compliance documentation, visit the product page on [TE.com](#)>

EU RoHS Directive 2011/65/EU	Compliant
EU ELV Directive 2000/53/EC	Compliant
China RoHS 2 Directive MIIT Order No 32, 2016	No Restricted Materials Above Threshold
EU REACH Regulation (EC) No. 1907/2006	Current ECHA Candidate List: JUNE 2024 (241) Candidate List Declared Against: JUNE 2024 (241) Does not contain REACH SVHC
Halogen Content	Not Low Halogen - contains Br or Cl > 900 ppm.
Solder Process Capability	Not applicable for solder process capability

Product Compliance Disclaimer

This information is provided based on reasonable inquiry of our suppliers and represents our current actual knowledge based on the information they provided. This information is subject to change. The part numbers that TE has identified as EU RoHS compliant have a maximum concentration of 0.1% by weight in homogenous materials for lead, hexavalent chromium, mercury, PBB, PBDE, DBP, BBP, DEHP, DIBP, and 0.01% for cadmium, or qualify for an exemption to these limits as defined in the Annexes of Directive 2011/65/EU (RoHS2). Finished electrical and electronic equipment products will be CE marked as required by Directive 2011/65/EU. Components may not be CE marked. Additionally, the part numbers that TE has identified as EU ELV compliant have a maximum concentration of 0.1% by weight in homogenous materials for lead, hexavalent chromium, and mercury, and 0.01% for cadmium, or qualify for an exemption to these limits as defined in the Annexes of Directive 2000/53/EC (ELV). Regarding the REACH Regulation, the information TE provides on SVHC in articles for this part number is based on the latest European Chemicals Agency (ECHA) ‘Guidance on requirements for substances in articles’ posted at this URL: <https://echa.europa.eu/guidance-documents/guidance-on-reach>

Compatible Parts



TE Part # 208488-1  
CMC PLUG ASSEMBLY,SZ 22

Also in the Series | AMP CPC



Circular Connector Backshells & Clamps(1)



Circular Power Connectors(423)



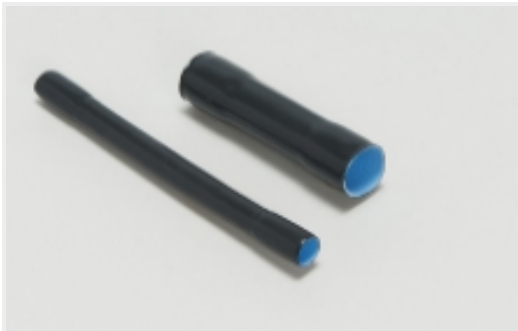
Connector Contacts(6)



Connector Hardware(12)



Power Contacts(6)

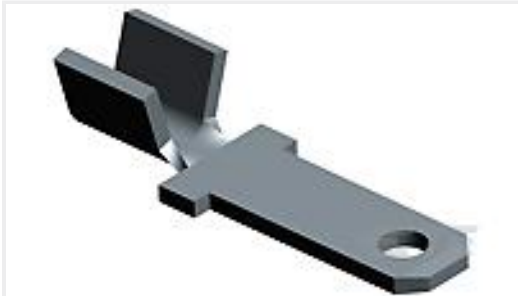


Sealing Sleeves(2)

Customers Also Bought



TE Part #34294  
TAB,PIDG 22-16



TE Part #62122-1  
110 FASTON TAB 22-18 TPBR



TE Part #1393127-9  
PRD-11AG0-120=PRD



TE Part #CAT-T3437-W919  
WP White Polyester Labels



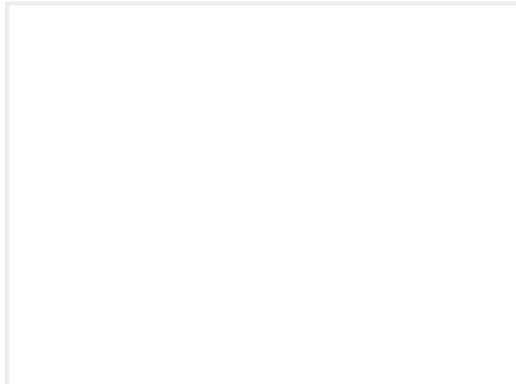
TE Part #CAT-T3437-H99A  
HW High Tack White Polyester Labels



TE Part #NB17932001  
RNF-100-1-1/2-BK-STK



TE Part #5-1618388-9  
LEV200A6NAF=RELAY, SPST-NO



TE Part #1SNA150041R0000  
TH35-7.5-P6-1METER



Documents

Product Drawings

CMC PLUG ASSEMBLY,SZ 22

English

CAD Files

Customer View Model

ENG\_CVM\_208488-5\_U.3d\_igs.zip

English

Customer View Model

ENG\_CVM\_208488-5\_U.3d\_stp.zip

English

3D PDF

English

Customer View Model

ENG\_CVM\_208488-5\_U.2d\_dxf.zip

English

3D PDF

3D

Customer View Model

ENG\_CVM\_CVM\_208488-5\_W.2d\_dxf.zip

English

Customer View Model

ENG\_CVM\_CVM\_208488-5\_W.3d\_igs.zip

English

Customer View Model

ENG\_CVM\_CVM\_208488-5\_W.3d\_stp.zip

English

By downloading the CAD file I accept and agree to the [Terms and Conditions](#) of use.

Product Specifications

Product Specification

English

Instruction Sheets

Instruction Sheet (U.S.)

English

Agency Approvals

UL Report

English