



Connectors > Power Connectors > Circular Power > Circular Power Connectors



Number of Positions: 7  
Connector Product Type: **Connector Assembly**  
Operating Voltage: **250 VDC**  
Connector System: **Wire-to-Board, Wire-to-Panel**  
Sealable: **No**

Features

Termination Features

Termination Method to PCB	Through Hole - Solder
---------------------------	-----------------------

Packaging Features

Packaging Quantity	36
Packaging Method	Tray

Mechanical Attachment

Panel Mount Feature Type	Flange with Threaded Inserts
Mating Alignment Type	Keyed
Mating Retention Type	Threaded Coupling
Mating Alignment	With
Polarization Code	A
Connector Mounting Type	Panel Mount
Mating Retention	With
Panel Mount Feature	With

Configuration Features



Reverse Numbering	Without
Number of Positions	7
Number of Power Positions	0
Number of Signal Positions	7

Product Type Features

Connector Product Type	Connector Assembly
Connector System	Wire-to-Board, Wire-to-Panel
Sealable	No
Connector & Contact Terminates To	Printed Circuit Board
Connector & Housing Type	Receptacle
Circular Connector Shell Type	All Plastic

Electrical Characteristics

Operating Voltage	250 VAC
-------------------	---------

Contact Features

Reverse Gender	Yes
Contact Type	Socket
Contact Current Rating (Max)	13 A

Housing Features

Housing Color	Black
Housing Material	PA 6.6
Circular Connector Shell Size	13

Dimensions

Assembly Length	32.51 mm[1.28 in]
-----------------	-------------------

Usage Conditions

Operating Temperature Range	-55 – 105 °C[-67 – 221 °F]
Fluid Resistance	None

Operation/Application

Circuit Application	Power & Signal
Shielded	No

Industry Standards

UL Flammability Rating	UL 94V-0
------------------------	----------



Other

EU RoHS Compliance	Compliant
EU ELV Compliance	Compliant

Product Compliance

For compliance documentation, visit the product page on TE.com>

EU RoHS Directive 2011/65/EU	Compliant
EU ELV Directive 2000/53/EC	Compliant
China RoHS 2 Directive MIIT Order No 32, 2016	No Restricted Materials Above Threshold
EU REACH Regulation (EC) No. 1907/2006	Current ECHA Candidate List: JUNE 2024 (241) Candidate List Declared Against: JUNE 2024 (241) Does not contain REACH SVHC
Halogen Content	BFR/CFR/PVC Free, but Br/Cl >900 ppm in other sources.
Solder Process Capability	Wave solder capable to 265°C

Product Compliance Disclaimer

This information is provided based on reasonable inquiry of our suppliers and represents our current actual knowledge based on the information they provided. This information is subject to change. The part numbers that TE has identified as EU RoHS compliant have a maximum concentration of 0.1% by weight in homogenous materials for lead, hexavalent chromium, mercury, PBB, PBDE, DBP, BBP, DEHP, DIBP, and 0.01% for cadmium, or qualify for an exemption to these limits as defined in the Annexes of Directive 2011/65/EU (RoHS2). Finished electrical and electronic equipment products will be CE marked as required by Directive 2011/65/EU. Components may not be CE marked. Additionally, the part numbers that TE has identified as EU ELV compliant have a maximum concentration of 0.1% by weight in homogenous materials for lead, hexavalent chromium, and mercury, and 0.01% for cadmium, or qualify for an exemption to these limits as defined in the Annexes of Directive 2000/53/EC (ELV). Regarding the REACH Regulation, the information TE provides on SVHC in articles for this part number is based on the latest European Chemicals Agency (ECHA) 'Guidance on requirements for substances in articles' posted at this URL: <https://echa.europa.eu/guidance-documents/guidance-on-reach>


Also in the Series | AMP CPC




Connector Backshells(1)



Connector Caps & Covers(16)



Connector Contacts(6)



Connector Seals & Cavity Plugs(35)



Connector Strain Relief(60)



Insertion & Extraction Tools(1)



Power Contacts(6)

Customers Also Bought



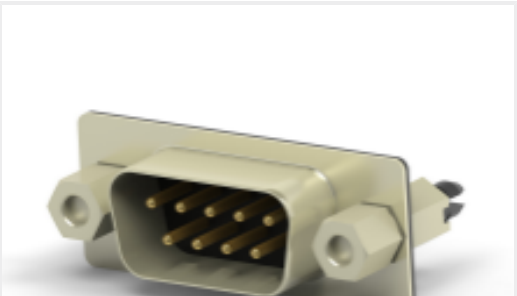
TE Part #3-770522-1  
SL156 HOODED CONTACT, LP LF



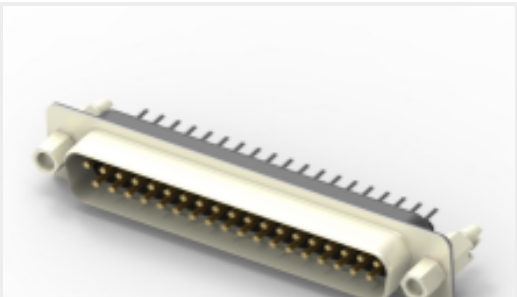
TE Part #647401-5  
05P SL156 HSG W/RAMP,LRG OPEN



TE Part #4-1609134-7  
20ESRM-3=F8277



TE Part #2301826-2  
AMPL PLUG HD20, VERT, 9P, B/L,4-40 S/LOC



TE Part #2301836-1  
AMPL PLUG HD20, VERT, 37P, B/L,4-40 S/LO



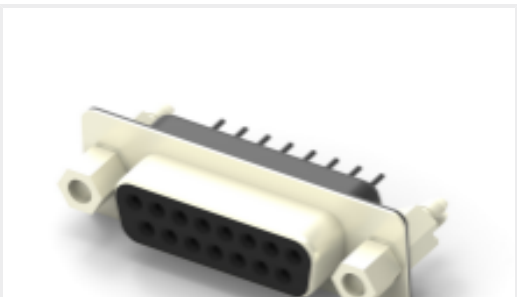
TE Part #794407-1  
MINI UNML SCKT 20-16 AWG SN



TE Part #794406-1  
MINI UMNL CONT 20-16AWG SN



TE Part #1-1658621-0  
50 NOVO MIL/CTR 15DP,LEAD FREE



TE Part #2301840-1  
AMPL REC HD20, VERT, 15P, B/L,4-40 S/LOC



TE Part #2-36154-2  
PIDG 22-16 22-18 MIL R 10;TAPE

Documents

CAD Files

3D PDF

3D

Customer View Model

ENG\_CVM\_CVM\_1986377-1\_C.2d\_dxf.zip

English

Customer View Model

ENG\_CVM\_CVM\_1986377-1\_C.3d\_igs.zip



English

Customer View Model

[ENG\\_CVM\\_CVM\\_1986377-1\\_C.3d\\_stp.zip](#)

English

By downloading the CAD file I accept and agree to the [Terms and Conditions](#) of use.

Product Specifications

[Application Specification](#)

English

Instruction Sheets

[Instruction Sheet \(U.S.\)](#)

English

[Instruction Sheet \(U.S.\)](#)

English