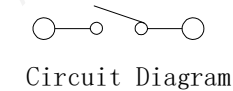
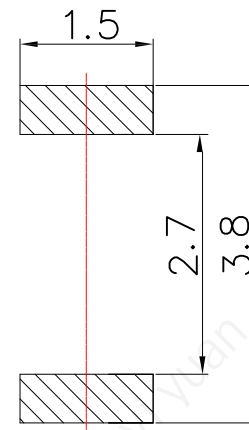
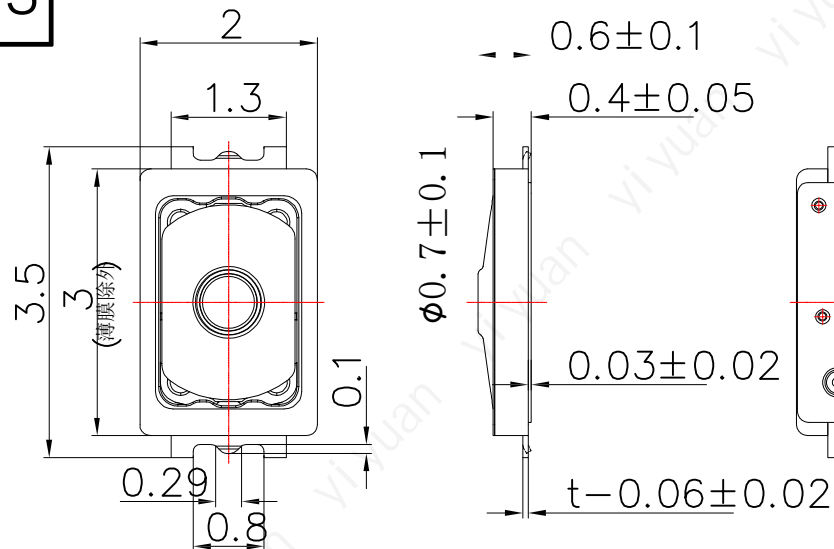


RoHS

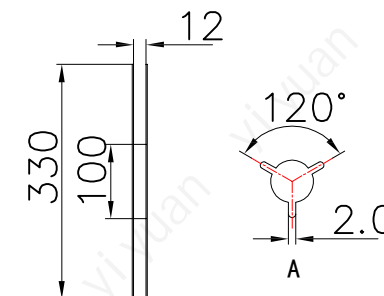
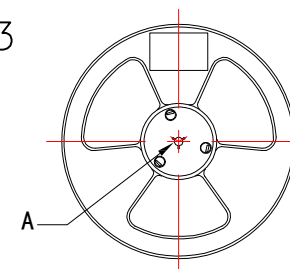
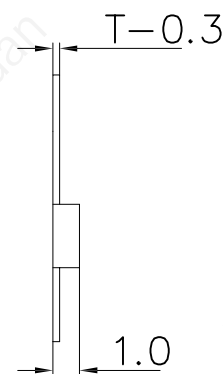
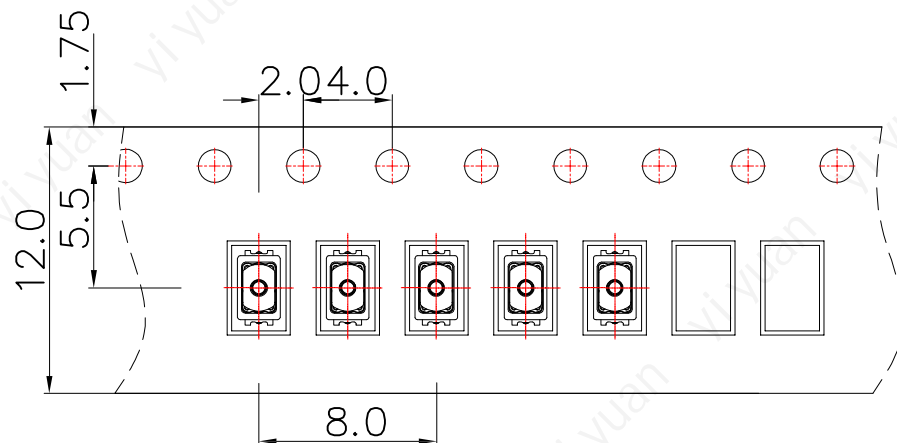
CAD GENERATED DRAWING. DON'T CHANGE BY HAND.

REV. ECN. NO. APPD.



Remarks:

1. Rated current Voltage: DC 15V 20mA
2. Contact resistance: $\leq 500 \text{ m}\Omega$
3. Insulation resistance: $\geq 50 \text{ M}\Omega$
4. Open and close the trip: $0.13 \pm 0.05 \text{ mm}$
5. Life requirements: 300,000次
6. Withstand voltage: AC 250V 1分钟
7. All materials comply with RoHS standards




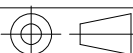
Remarks:

- 1, The number of tapes per volume is 10000 PCS;
- 2, Braiding process, can not be caused by carrying half crushed
- 3, Pay attention to the direction of the tape, with a clockwise direction out of the carrier tape, with a hole in the top or right

| | | | | |
|-----|-----------|-----------------|-----|------------|
| 5 | Button | PA9T | 1 | Black |
| 4 | Paster | Polyimide | 1 | White |
| 3 | Shrapnel | SUS | 2 | Ag Plating |
| 2 | Housing | PA9T | 1 | Black |
| 1 | Terminal | Phosphor copper | 2 | Ag Plating |
| NO. | PART NAME | MATERIAL | QTY | FINISHING |

Mechanical

| P/N | Operatin g Force(gf) | Heiht mm |
|-----------------|----------------------------|-------------|
| YTS4030201ABG00 | 160±50 | 0.6 |
| YTS4030202ABG00 | 260±50 | 0.6 |

| | | | | | |
|---|--------|--|-------|---|------|
| <div>General Tolerance</div> <div>X≤1±0.05</div> <div>1≤X≤5±0.10</div> <div>5≤X≤10±0.15</div> <div>X>10±0.25</div> <div>ANGLE±3°</div> <div>UNITmm</div> | UNITS | mm | | <div>YIYUAN</div> <div>YIYUAN TECHNOLOGY</div> | |
| | MAT'L | / | | | |
| <div>THESE DRAWINGS AND SPECIFICATIONS ARE THE PROPERTY OF YIYUAN TECHNOLOGY CO.,LTD AND SHALL NOT BE REPRODUCED, COPIED OR USED IN ANY MANNER WITHOUT THE PRIOR WRITTEN CONSENT OF YIYUAN TECHNOLOGY CO.,LTD</div> <div>Email at info@yiyuanswitches.com</div> | FINISH | APPD: ROGER | | TITLE: | |
| | Q'TY | CHKD: ROC | | TACTILE SWITCH 3*2*0.6带点激光IP67 | |
| | | DR: BILLY WANG 2020/08/21 | | DWG NO.: | |
| | | | | YTS403020 | |
| | | <div></div> | SCALE | SHEET | REV. |
| | | | 1/1 | 1/1 | A |