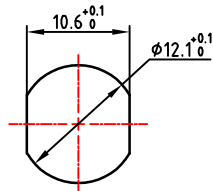
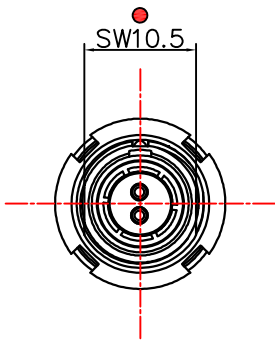
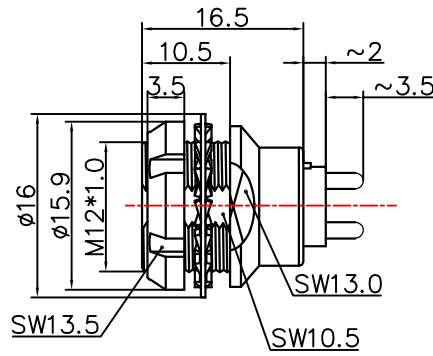


1. 产品尺寸图Product Dimension Drawing

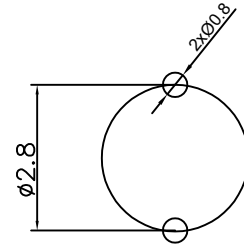
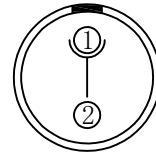
标识点
Identification points



面板开孔尺寸
Panel cut-out size



2芯孔位排列
The 2-core hole position is arranged



PCB开孔尺寸
PCB cut-out size

2. 产品电器参数Product electrical parameters

| | |
|---|--------------------|
| 防护等级 (Ingress protection) | IP50 |
| 插拔测试 (Plugging and unplugging test) | <5000次 |
| 产品耐温 (The product is temperature resistant) | -55° C / +250° C |
| 盐雾腐蚀 (Salt Spray Corrosion) | >72 hr |
| 测试电压 (kV rms) 针芯-针芯 | 1.5 |
| 测试电压 (kV rms) 针芯-外壳 | 1.35 |
| 额定电流Current rating | 12A |
| 导体接触规格 Conductor contact specifications | 1.3 |
| 最大接触电阻(mΩ)Maximum Contact Resistance (mΩ) | 3.0 |
| 绝缘电阻(Insulation resistance) | 5000MΩ (常态) |
| 屏蔽 (分钟) Shielding (min) | 100 g (6 ms) |
| 振动 Vibration | 15 g (10Hz-1000Hz) |

3. 环境及表面处理产品特性Environmental and surface treatment product characteristics

| | |
|--------------------------|----------------------------------|
| 外壳材料 Housing material | 金属件黄铜镀镍镀铬 |
| 绝缘体材料 Insulator material | PPS (可选PEEK) PPS (optional PEEK) |
| 触体材料 Contact material | 锡青铜镀金Contact material |

| | | |
|--|---|----------------------------------|
| TONGRUIJOIN | 东莞市通瑞电子科技有限公司 TongRuiJoin Dongguan Tongrui Electronic Technology Co., Ltd www.cntfre.com | 单芯图纸Single-core drawings |
| | 1B前固定插座1B 1B front fixed socket | 单位unit:mm 修改revise:A0 视图view: |
| 1: 连接器组装生产所有公差通常为0.1mm,2: 插座直接拧入螺纹孔中, 螺纹 +0.05mm 1: All tolerances are usually 0.1mm for connector assembly production, 2: The socket is screwed directly into the threaded hole, the thread is +0.05mm | | 型号Model R.EEG.1B.102.CSN35 |