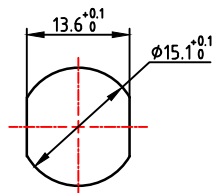
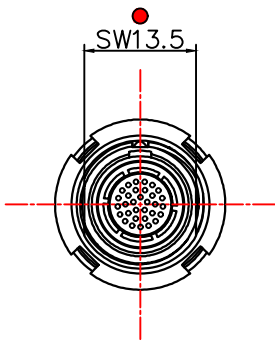
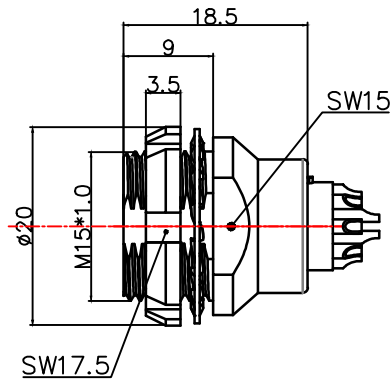


## 1. 产品尺寸图Product Dimension Drawing

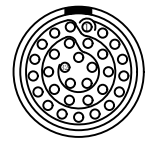
标识点  
Identification points



面板开孔尺寸  
Panel cut-out size



焊接顺序点  
Weld sequence points



## 2. 产品电器参数Product electrical parameters

|   |                    |
|---|--------------------|
| 防护等级 (Ingress protection)                   | IP50               |
| 插拔测试 (Plugging and unplugging test)         | <5000次             |
| 产品耐温 (The product is temperature resistant) | -55° C / +250° C   |
| 盐雾腐蚀 (Salt Spray Corrosion)                 | >72 hr             |
| 测试电压 (kV rms) 针芯-针芯                         | 0.8                |
| 测试电压 (kV rms) 针芯-外壳                         | 1.2                |
| 额定电流Current rating                          | 1.5A               |
| 导体接触规格 Conductor contact specifications     | 0.5                |
| 最大接触电阻 (mΩ) Maximum Contact Resistance (mΩ) | 15                 |
| 绝缘电阻 (Insulation resistance)                | 5000MΩ (常态)        |
| 屏蔽 (分钟) Shielding (min)                     | 100 g (6 ms)       |
| 振动 Vibration                                | 15 g (10Hz-1000Hz) |

## 3. 环境及表面处理产品特性Environmental and surface treatment product characteristics

|                          |   |
|--------------------------|---|
| 外壳材料 Housing material    | 金属件铜合金镀镍镀铬<br>(Metal parts: copper alloy nickel plated and chrome plated) |
| 绝缘体材料 Insulator material | PPS (可选PEEK) PPS (optional PEEK)  |
| 触体材料 Contact material    | 铜合金镀金Copper alloy gold-plated   |

|  |   |                                  |
|--|---|----------------------------------|
|  | 东莞市通瑞电子科技有限公司<br>TongRuiJoin<br>Dongguan Tongrui Electronic Technology Co., Ltd<br>www.cntfre.com | 单芯图纸Single-core drawings         |
|  | 2B后固定插座2B rear fixed socket   | 单位unit:mm 修改revise:A0<br>视图view: |
| 1: 连接器组装生产所有公差通常为0.1mm,2: 插座直接拧入螺纹孔中, 螺纹 +0.05mm<br>1: All tolerances are usually 0.1mm for connector assembly production, 2: The socket is screwed directly into the threaded hole, the thread is +0.05mm |   | 型号Model<br>R.EEG.2B.32.CSL       |