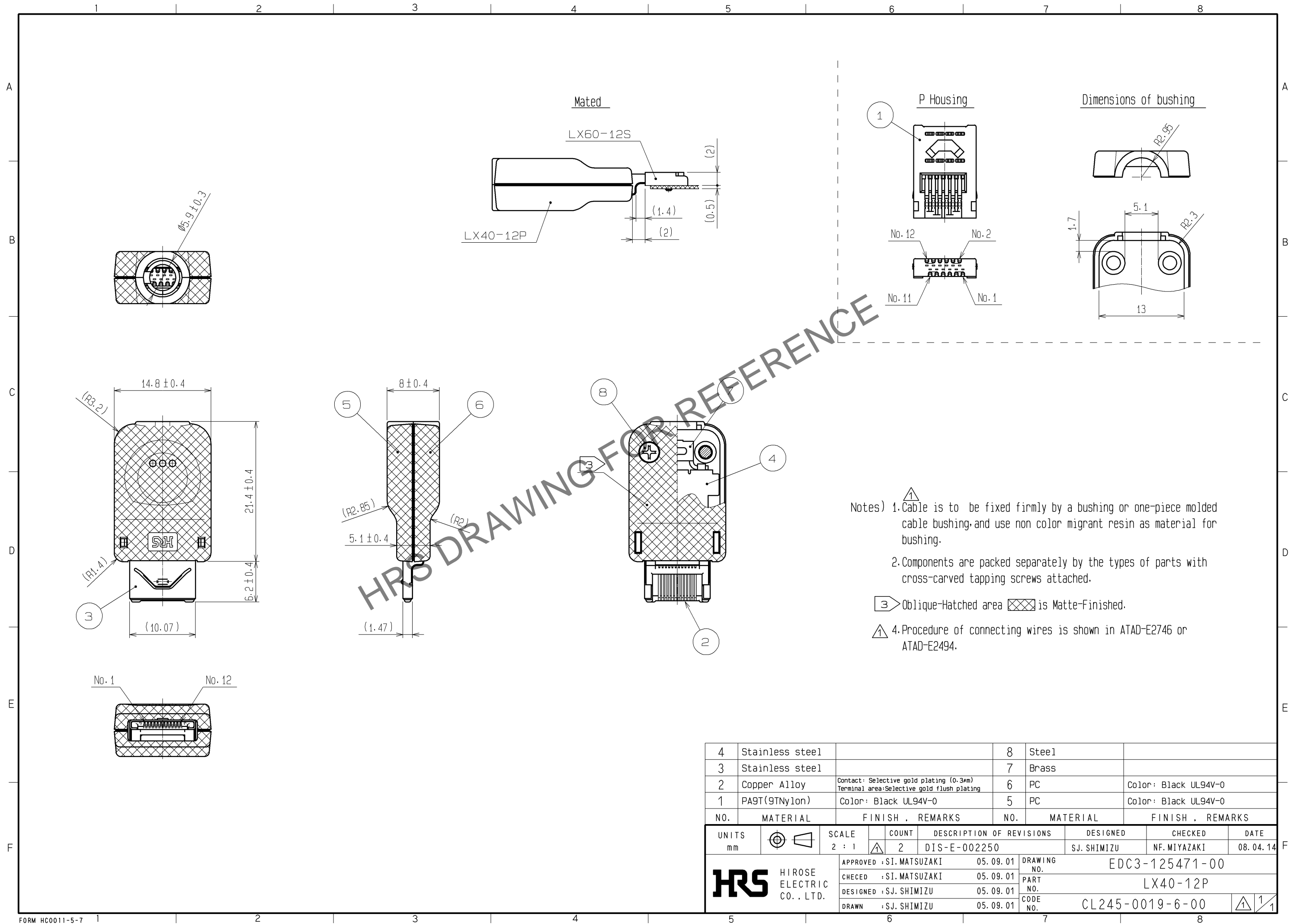
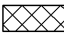
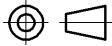



Feb.1.2025 Copyright 2025 HIROSE ELECTRIC CO., LTD. All Rights Reserved.
In case of consideration for using Automotive equipment / device which demand high reliability, kindly contact our sales window correspondents.



- Notes) 1. Cable is to be fixed firmly by a bushing or one-piece molded cable bushing, and use non color migrant resin as material for bushing.
2. Components are packed separately by the types of parts with cross-carved tapping screws attached.
- 3 Oblique-Hatched area  is Matte-Finished.
4. Procedure of connecting wires is shown in ATAD-E2746 or ATAD-E2494.

4	Stainless steel		8	Steel	
3	Stainless steel		7	Brass	
2	Copper Alloy	Contact: Selective gold plating (0.3μm) Terminal area: Selective gold flush plating	6	PC	Color: Black UL94V-0
1	PA9T(9TNylon)	Color: Black UL94V-0	5	PC	Color: Black UL94V-0
NO.	MATERIAL	FINISH , REMARKS	NO.	MATERIAL	FINISH , REMARKS
UNITS mm		SCALE 2 : 1	COUNT 2	DESCRIPTION OF REVISIONS DIS-E-002250	DESIGNED S.J. SHIMIZU
 HIROSE ELECTRIC CO., LTD.		APPROVED : SI. MATSUZAKI	05. 09. 01	DRAWING NO. EDC3-125471-00	
		CHECED : SI. MATSUZAKI	05. 09. 01	PART NO. LX40-12P	
		DESIGNED : S.J. SHIMIZU	05. 09. 01	CODE NO. CL245-0019-6-00	
		DRAWN : S.J. SHIMIZU	05. 09. 01		
				1	1