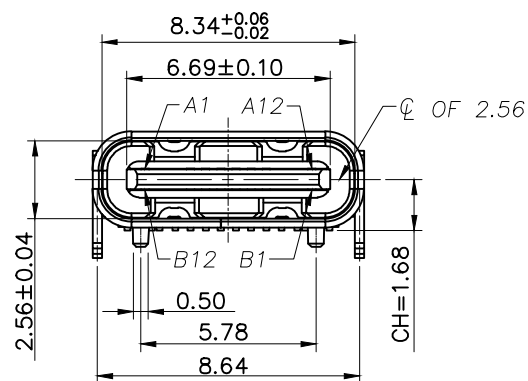
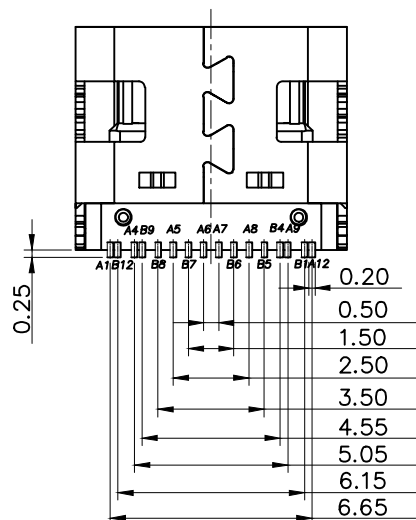
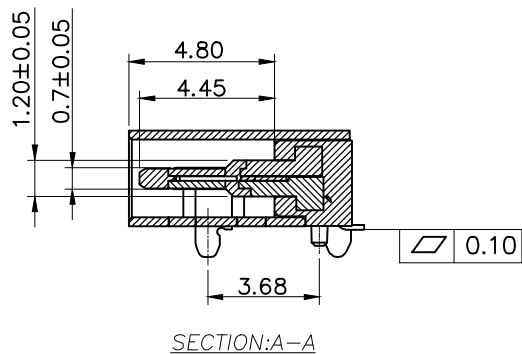
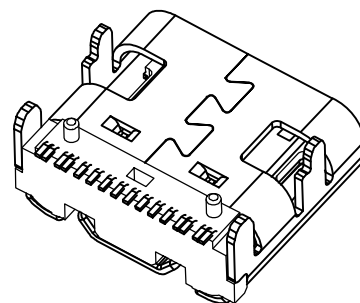
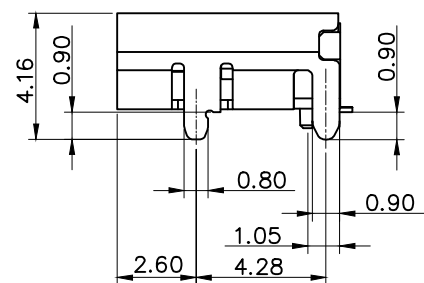
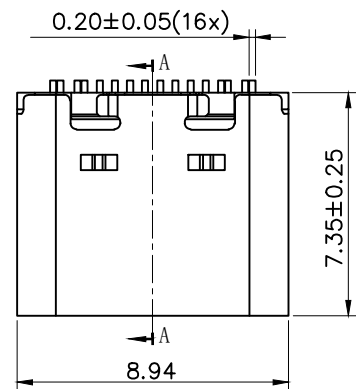
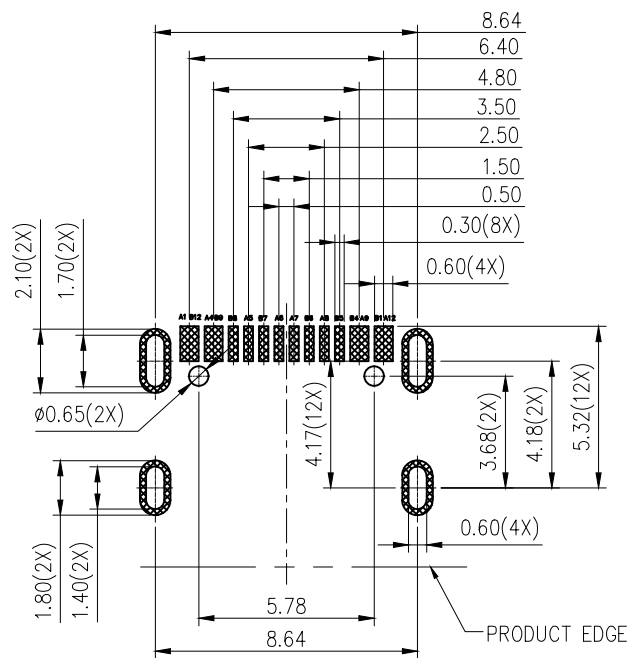
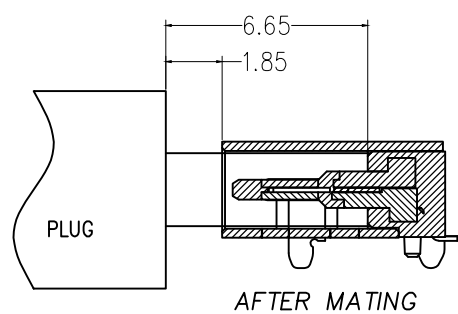


标记 MARK		ECN编号/变更内容 ECN NO/DEFINITION				修改 REVISE		日期 DATE		核准 APPROVE	
A12	A11	A10	A9	A8	A7	A6	A5	A4	A3	A2	A1
GND			VBUS	SBU1	DN1	DP1	CC1	VBUS			GND
GND			VBUS	CC2	DP2	DN2	SBU2	VBUS			GND
B1	B2	B3	B4	B5	B6	B7	B8	B9	B10	B11	B12



NOTE:

- MATERIAL SPECIFICATION:
 - HOUSING: LCP BLACK.
 - CONTACTS: C7025 T=0.15mm
 - MID PLATE: SUS301 T=0.15mm
 - FRONT SHELL: SUS201 T=0.30mm
- PLATING SPECIFICATION:
 - CONTACTS:
 - Ni 50u" MIN. UNDER PLATED OVER ALL.
 - Au PLATED ON THE FUNCTIONAL AREA OF CONTACT. (GOLD PLATING THICKNESS FOLLOW THE P/N)
 - PLATING SPECIFICATIONS OF THE SOLDER AREA FOLLOW THE P/N
 - FRONT SHELL:
 - Ni 30u" MIN. UNDER PLATED OVER ALL.
 - SHIELD PLATE&EMI PLATE:
 - CLEAR ONLY
- MECHANICAL PERFORMANCE,
 - INSERTION FORCE: 0.5~2.0kgf.
 - REMOVAL FORCE: 0.8kgf~2.0kgf.
 - DURABILITY: 10000 CYCLES.
- ELECTRICAL PERFORMANCE,
 - CURRENT RATING: 3.0A
VOLTAGE RATING: 5.0V
 - LLCR:
 - VBUS & GND PINS AND OTHER PINS: 40mΩ/PIN MAX.
 - SHIELD: 50mΩ/MAX.
 - LLCR MAX. CHANGE OF ALL PINS: 10mΩ.
 - INSULATION RESISTANCE: 100MΩ MIN
 - DIELECTRIC WITHSTAND VOLTAGE, AC 100V FOR 1 MINUTE.
- ENVIRONMENTAL PERFORMANCE:
 - OPERATING TEMPERATURE: -25°C~+85°C.
- IR REFLOW:
 - THE PEAK TEMPERATURE ON THE BOARD SHALL BE MAINTAINED FOR 10 SECONDS AT 260°C.



RECOMMENDED PCB LAYOUT(TOP VIEW)
THICKNESS 0.80MM; DEFAULT TOLERANCE: ±0.05

3	外壳	不锈钢	镀镍	
2	接触	铜	镀金	
1	基座	LCP	黑色	
序号	品名	材质	电镀/颜色	备注

	深圳市虹成电子有限公司 TITLE TYPE-C母座		PART NO HC-TYPE-C-16P-3M2S	
	GENERAL TOLERANCES (UNLESS SPECIFIED)	比列 SCALE 1:1		
X ±0.25 X° ±3.0°	单位 UNIT MM	制图 DRAW AhYe		
.X ±0.20 .X° ±2.0°	张数 PART NO 1 OF 1	审核 CHECKED 夏操云		
.XX ±0.15 .XX° ±1.0°	版本 REV A	批准 APPROVE 赵亮亮		
.XXX ±0.08				