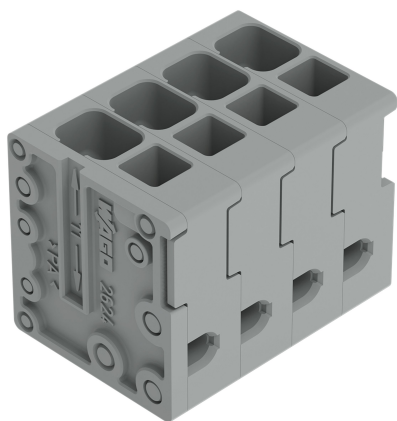


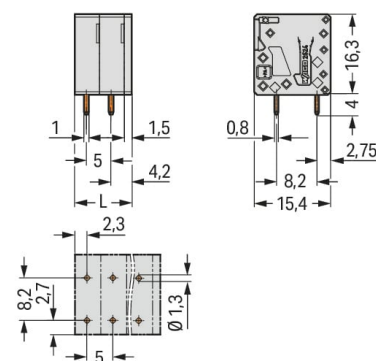
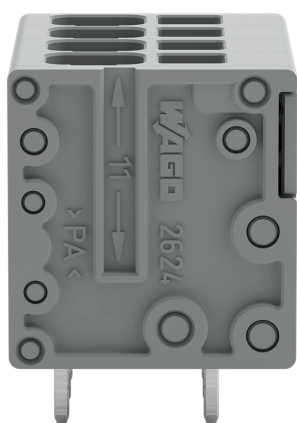
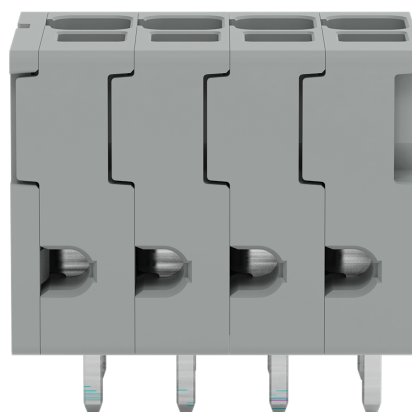
Data Sheet | Item Number: 2624-3104

PCB terminal block; 4 mm²; Pin spacing 5 mm; 4-pole; Push-in CAGE CLAMP®; 4,00 mm²; gray

<https://www.wago.com/2624-3104>

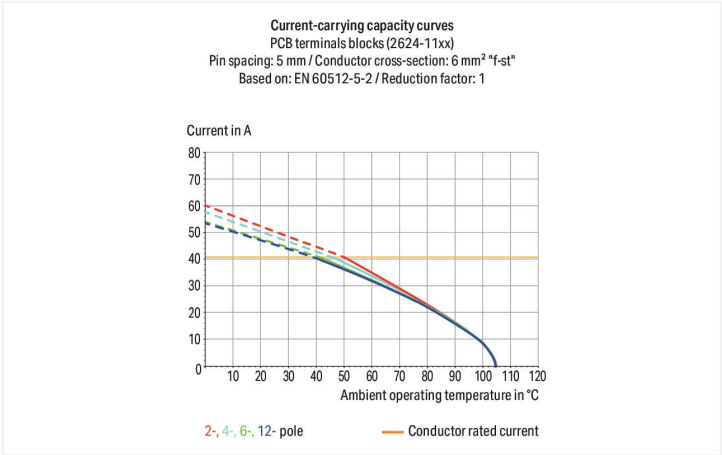
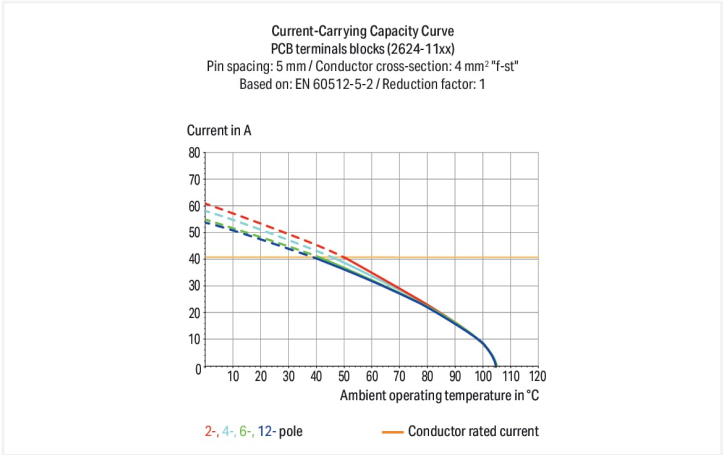


Color: ■ gray



Dimensions in mm

$L = (\text{pole no.} - 1) \times \text{pin spacing} + 6.5 \text{ mm}$



PCB terminal block, 2624 Series, 90°conductor entry to board

This PCB terminal block (item number 2624-3104) is designed to connect conductors quickly and easily. You can rely on trusted safety with these PCB terminal blocks, perfect for a wide variety of applications when designing your devices. This PCB terminal block has a rated voltage of 400 V and can handle currents up to 41 A, making it suitable for high-load applications. Ensure that the strip lengths are between 10 mm and 12 mm when connecting conductors to this PCB terminal block. Featuring one conductor terminal along with Push-in CAGE CLAMP®, this connector is highly versatile. Our Push-in CAGE CLAMP® is a universal, maintenance-free connection solution for all conductor types, featuring a winning design: It allows direct insertion of both solid and fine-stranded conductors with ferrules without needing tools. No preparation is required; for example, crimping the conductor's ferrule is not necessary. The dimensions are 21.5 x 20.3 x 15.4 mm (width x height x depth). This PCB terminal block is suitable for conductor cross sections ranging from 0.2 mm² to 6 mm². It has one level. You can connect four potentials / four poles using the four clamping points. The gray housing is made of polyamide (PA66) for insulation, the contacts are made of electrolytic copper (ECu), and the clamping spring is made of chrome-nickel spring steel (CrNi). Tin is used for coating the contact surfaces. This PCB terminal block is operated with an operating tool. The PCB terminal block is designed for THT soldering. These PCB terminal blocks are mounted using feed-through mounts.. Insert the conductor at a 90° angle.. The solder pins, which are 0.8 x 1 mm in cross-section and 4 mm long, are arranged over the entire terminal strip (in-line). There are two solder pins per potential.

Notes	
Variants:	Other versions (or variants) can be requested from WAGO Sales or configured at https://configurator.wago.com/ . Other pole numbers Direct marking Other colors



Electrical data

Ratings per IEC/EN 60664-1				Approvals per UL 1059			
Overvoltage category	III	III	II	Use group	B	C	D
Pollution degree	3	2	2	Rated voltage	300 V	-	300 V
Nominal voltage	320 V	400 V	630 V	Rated current	26 A	-	10 A
Rated surge voltage	4 kV	4 kV	4 kV				
Rated current	41 A	41 A	41 A				

Approvals per CSA			
Use group	B	C	D
Rated voltage	300 V	-	300 V
Rated current	26 A	-	5 A

Connection data

Clamping units	4	Connection 1	
Total number of potentials	4	Connection technology	Push-in CAGE CLAMP®
Number of connection types	1	Actuation type	Operating tool
Number of levels	1	Solid conductor	0.2 ... 6 mm² / 24 ... 10 AWG
		Fine-stranded conductor	0.2 ... 6 mm² / 24 ... 10 AWG
		Fine-stranded conductor; with insulated ferrule	0.25 ... 2.5 mm²
		Fine-stranded conductor; with uninsulated ferrule	0.25 ... 2.5 mm²
		Fine-stranded conductor; with twin ferrule	0.25 ... 1.5 mm²
		Strip length	10 ... 12 mm / 0.39 ... 0.47 inches
		Conductor connection direction to PCB	90 °
		Pole number	4

Physical data

Pin spacing	5 mm / 0.197 inches
Width	21.5 mm / 0.846 inches
Height	20.3 mm / 0.799 inches
Height from the surface	16.3 mm / 0.642 inches
Depth	15.4 mm / 0.606 inches
Solder pin length	4 mm
Solder pin dimensions	0.8 x 1 mm
Drilled hole diameter with tolerance	1.3 (+0.1) mm

Mechanical data

Mounting type	Feed-through mounting
---------------	-----------------------



PCB contact		
PCB contact		THT
Solder pin arrangement		over the entire terminal strip (in-line)
Number of solder pins per potential		2

Material data		
Note (material data)		Information on material specifications can be found here
Color		gray
Material group		I
Insulation material (main housing)		Polyamide (PA66)
Flammability class per UL94		V0
Clamping spring material		Chrome-nickel spring steel (CrNi)
Contact material		Electrolytic copper (E _{Cu})
Contact Plating		Tin
Fire load		0.08 MJ
Weight		6.6 g

Environmental requirements		
Limit temperature range		-60 ... +105 °C
Processing temperature		-35 ... +60 °C
Continuous operating temperature		-60 ... +105 °C

Commercial data		
eCl@ss 10.0		27-44-04-01
eCl@ss 9.0		27-44-04-01
ETIM 9.0		EC002643
ETIM 8.0		EC002643
PU (SPU)		100 pcs
Packaging type		Box
Country of origin		PL
GTIN		4055143578769
Customs tariff number		85369010000

Environmental Product Compliance		
RoHS Compliance Status		Compliant, No Exemption

Approvals / Certificates

General approvals



Approval	Standard	Certificate Name
CB DEKRA Certification B.V.	IEC 60947-7-4	NL-61583
CSA DEKRA Certification B.V.	C22.2 No. 158	70117145
cURus Underwriters Laboratories Inc.	UL 1059	E45172
KEMA/KEUR DEKRA Certification B.V.	EN 60947-7-4	71-100535

Declarations of conformity and manufacturer's declarations



Approval	Standard	Certificate Name
Railway WAGO GmbH & Co. KG	-	Z00004415.000

Downloads

Environmental Product Compliance

Compliance Search

Environmental Product Compliance 2624-3104

↓

Documentation

Additional Information

Technical Section

03.04.2019

pdf

2027.26 KB

↓

CAD/CAE-Data

CAD data

2D/3D Models 2624-3104

↓

CAE data

ZUKEN Portal 2624-3104

↓

PCB Design

Symbol and Footprint via SamacSys 2624-3104

↓

Symbol and Footprint via Ultra Librarian 2624-3104











↓

1 Compatible Products

1.1 Optional Accessories

1.1.1 Ferrule

1.1.1.1 Ferrule

 <div>Item No.: 216-241 Ferrule; Sleeve for 0.5 mm² / 20 AWG; insulated; electro-tin plated; electrolytic copper; gastight crimped; acc. to DIN 46228, Part 4/09.90; white</div>	 <div>Item No.: 216-242 Ferrule; Sleeve for 0.75 mm² / 18 AWG; insulated; electro-tin plated; electrolytic copper; gastight crimped; acc. to DIN 46228, Part 4/09.90; gray</div>	 <div>Item No.: 216-262 Ferrule; Sleeve for 0.75 mm² / 18 AWG; insulated; electro-tin plated; electrolytic copper; gastight crimped; acc. to DIN 46228, Part 4/09.90; gray</div>	 <div>Item No.: 216-243 Ferrule; Sleeve for 1 mm² / AWG 18; insulated; electro-tin plated; electrolytic copper; gastight crimped; acc. to DIN 46228, Part 4/09.90; red</div>
 <div>Item No.: 216-263 Ferrule; Sleeve for 1 mm² / AWG 18; insulated; electro-tin plated; electrolytic copper; gastight crimped; acc. to DIN 46228, Part 4/09.90; red</div>	 <div>Item No.: 216-244 Ferrule; Sleeve for 1.5 mm² / AWG 16; insulated; electro-tin plated; electrolytic copper; gastight crimped; acc. to DIN 46228, Part 4/09.90; black</div>	 <div>Item No.: 216-264 Ferrule; Sleeve for 1.5 mm² / AWG 16; insulated; electro-tin plated; electrolytic copper; gastight crimped; acc. to DIN 46228, Part 4/09.90; black</div>	 <div>Item No.: 216-246 Ferrule; Sleeve for 2.5 mm² / AWG 14; insulated; electro-tin plated; electrolytic copper; gastight crimped; acc. to DIN 46228, Part 4/09.90; blue</div>
 <div>Item No.: 216-266 Ferrule; Sleeve for 2.5 mm² / AWG 14; insulated; electro-tin plated; electrolytic copper; gastight crimped; acc. to DIN 46228, Part 4/09.90; blue</div>	 <div>Item No.: 216-106 Ferrule; Sleeve for 2.5 mm² / AWG 14; un-insulated; electro-tin plated; silver-colored</div>		

1.1.2 Tool

1.1.2.1 Operating tool



Item No.: 210-720

Operating tool; Blade: 3.5 x 0.5 mm; with a partially insulated shaft; multicoloured

Installation Notes

Conductor termination



Insert fine-stranded conductors and remove all conductor types via operating tool.

Conductor termination



Insert solid conductors via push-in termination.