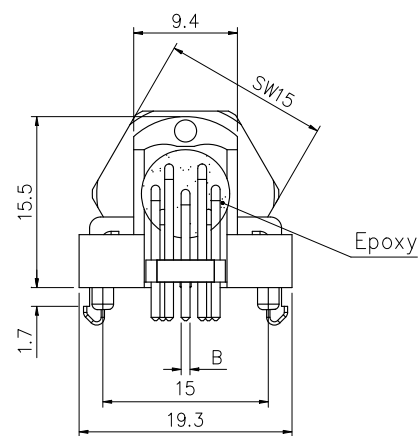
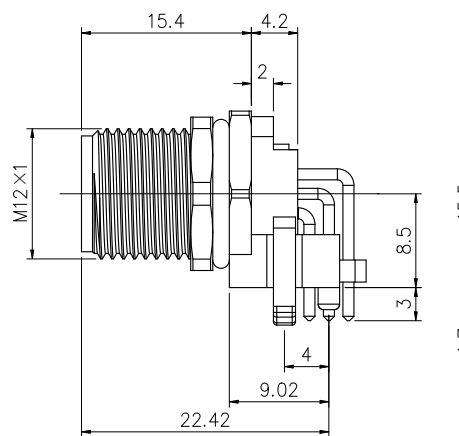
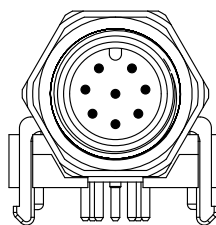


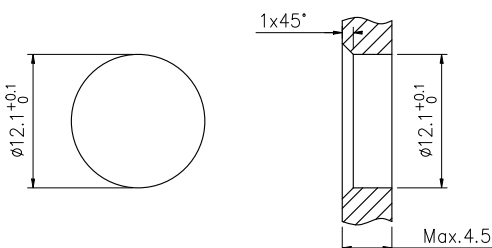
P. C. B. 开孔尺寸

	1	2
A		
B		
C		

[illegible]

2~5P: $\phi 1\text{mm}$
8P: $\phi 0.8\text{mm}$
12P: $\phi 0.6\text{mm}$

连接方式:	螺纹连接
接线方式:	焊板
污染等级:	3
温度范围:	-40°~+80°
防护等级:	IP67
插拔周期:	≥500



面板开孔尺寸

芯位排布

1 2P

2 4P

3 4P D

4 5P

5 5P B

6 6P

7 7P

8 8P

9 8P

10 10P

M12-P_{xx}-GPLM12

2弯式针型金属插座 插板式
板牙M12*1

M12-P_{xx}-GPLM12