

0.1" (2.54mm) Crimp Connector Housing: 1x4-Pin 10-Pack

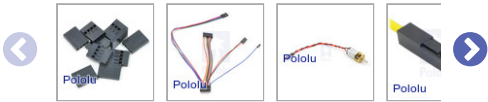


www.pololu.com

Pololu item #: 1903 **987** in stock
Brand: [PCX](#)
✓ RoHS3

Price break	Unit price (US\$)
1	1.29
5	1.19
25	1.09
100	1.00

Quantity: Add to cart
[backorders](#) allowed [Add to list](#)



These **four-pin** housings work with our [wires with pre-crimped terminals](#) to let you quickly make custom cables that mate with various 0.1"-spaced connectors, including male or female headers and solderless breadboards. They are sold in packs of **10**.

Alternatives available with variations in these parameter(s): pins [Select variant...](#)

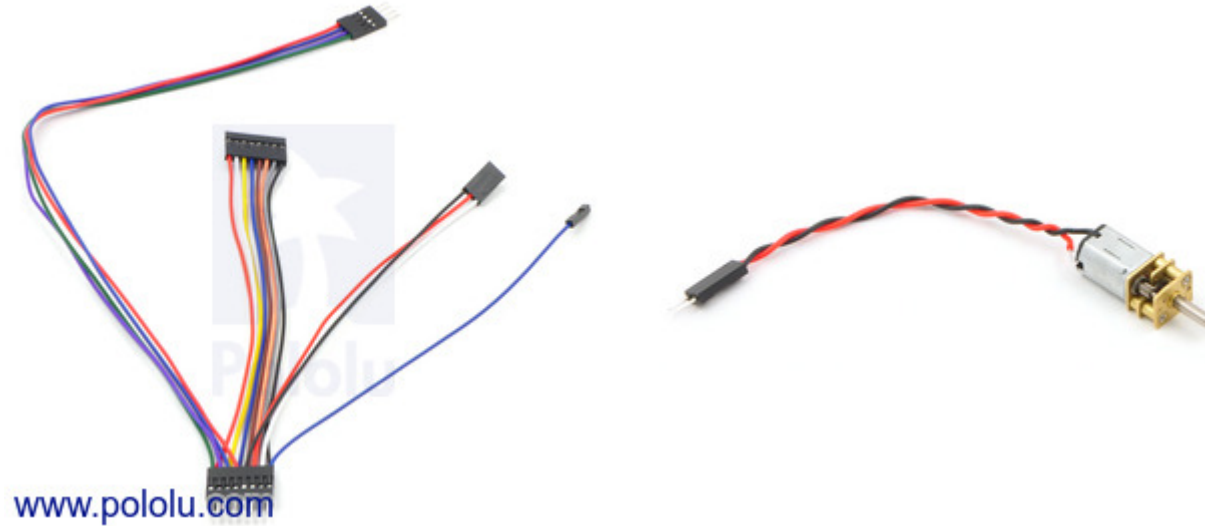
[Description](#) [Specs \(2\)](#) [Pictures \(6\)](#) [Resources \(1\)](#) [FAQs \(0\)](#) [On the blog \(0\)](#) [Distributors \(29\)](#)

Overview

These housings work with our [wires with pre-crimped terminals](#) and our [crimp pins](#) to let you quickly make custom cables that mate with various 0.1"-spaced connectors, including [male](#) and [female headers](#) and [solderless breadboards](#). Just pick the housing for the correct

number of pins, pick the colors and genders for your wires, and snap them into the housings (note: getting the wires out is possible but not as easy).

You can easily make cable harnesses or assemblies that branch from one connector on one side to multiple connectors on the other; you can also cut off one pre-crimped end and solder the wires directly to components to make swapping connections easy:



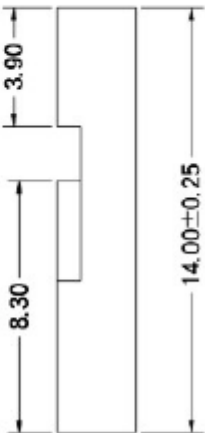
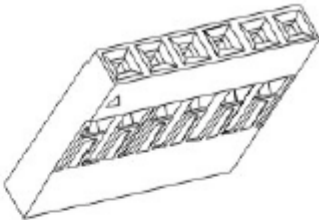
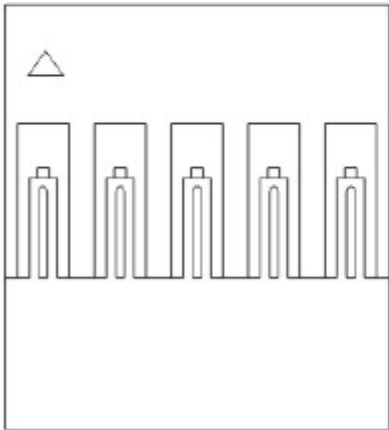
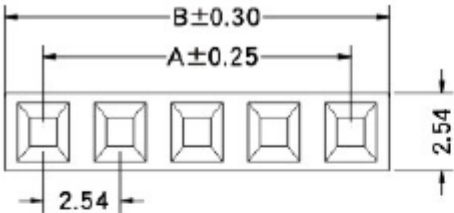
The following video talks about some of our various wire and cable options and includes a short demonstration of how to use these housings:



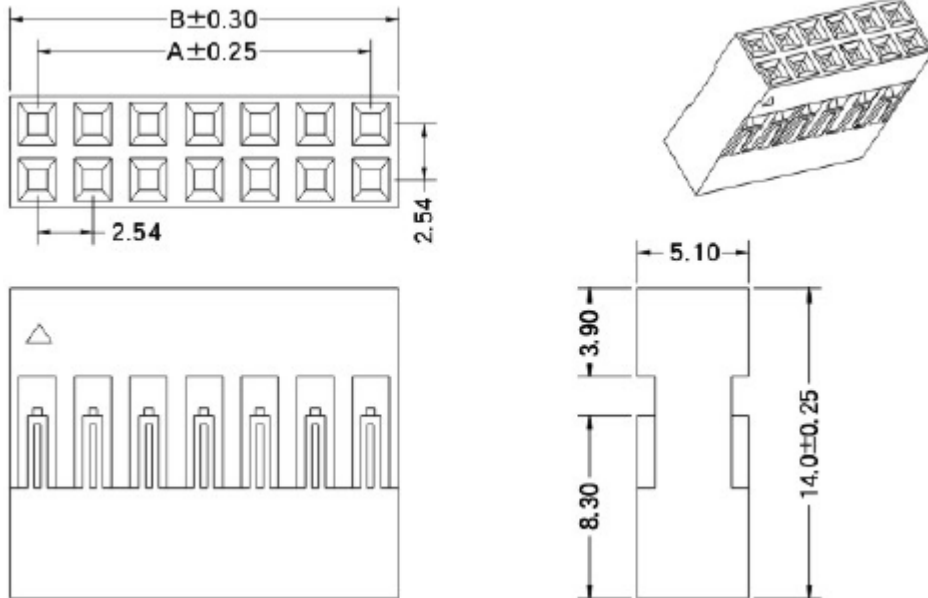
And this [customer-made video](#) shows how to make custom cables with these crimp connector housings using [pre-crimped wires](#) and self-crimped wires made with our [crimping tool](#).

Dimensions

Pins	A (mm)	B (mm)
1×1	—	2.54
1×2	2.54	5.08
1×3	5.08	7.62
1×4	7.62	10.16
1×5	10.16	12.70
1×6	12.70	15.24





<u>1×7</u>	15.24	17.78
<u>1×8</u>	17.78	20.32
<u>1×9</u>	20.32	22.86
<u>1×10</u>	22.86	25.40
<u>1×12</u>	27.94	30.48
<u>1×16</u>	38.10	40.64
<u>1×20</u>	48.26	50.80
<u>2×2</u>	2.54	5.08
<u>2×3</u>	5.08	7.62
<u>2×4</u>	7.62	10.16
<u>2×5</u>	10.16	12.70
<u>2×6</u>	12.70	15.24
<u>2×7</u>	15.24	17.78
<u>2×8</u>	17.78	20.32
<u>2×10</u>	22.86	25.40
<u>2×12</u>	27.94	30.48
<u>2×13</u>	30.48	33.02
<u>2×16</u>	38.10	40.64
<u>2×17</u>	40.64	43.18
<u>2×18</u>	43.18	45.72
<u>2×20</u>	48.26	50.80



We have seen these connectors referred to as “DuPont-style” connector housings, though we have not verified that they can be used as direct substitutes for connector housings formerly made by DuPont. We intend for them to be used with our [wires with pre-crimped terminals](#) or our [male](#) or [female crimp pins](#).

People often buy this product together with:

  [0.1" \(2.54mm\) Crimp Connector Housing: 1x1-Pin 25-Pack](#)

  [0.1" \(2.54mm\) Crimp Connector Housing: 1x2-Pin 25-Pack](#)

  [0.1" \(2.54mm\) Crimp Connector Housing: 1x3-Pin 25-Pack](#)