

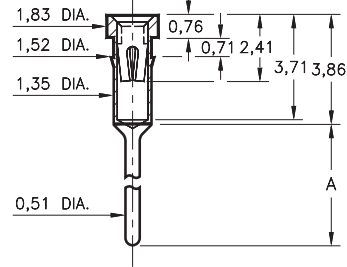
# PIN RECEPTACLES

FOR 0,38 - 0,64 DIAMETER PINS

## 1005/1013/8898

XXXX-0-15-XX-3X-XX-04-0

Press-fit in 1,45 mounting hole  
Annealed brass shell for auto-clinching \*



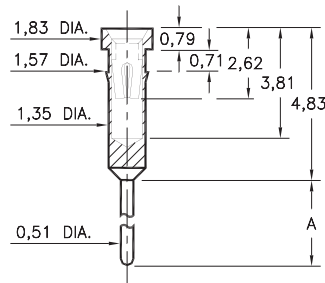
Basic Part Number	Length A
1005-0	3,51
1013-0	4,19
8898-0	5,69

\* NOTE: 8898 is not annealed & not suitable for auto-clinching

## 0145/0146

014X-0-15-XX-30-XX-04-0

Press-fit in 1,5 mounting hole

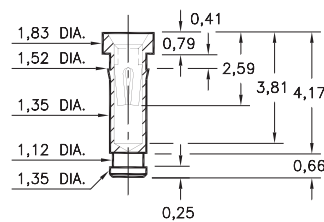


Basic Part Number	Length A
0145-0	7,62
0146-0	10,41

## 4378

4378-0-15-XX-30-XX-10-0

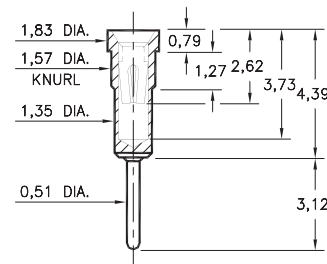
Press-fit in 1,45 mounting hole



## 0556

0556-0-15-XX-30-XX-04-0

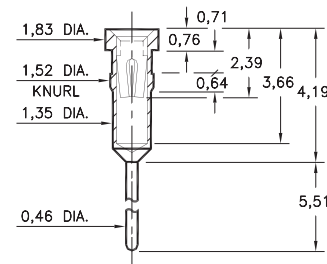
Press-fit in 1,5 mounting hole



## 1103

1103-0-15-XX-30-XX-04-0

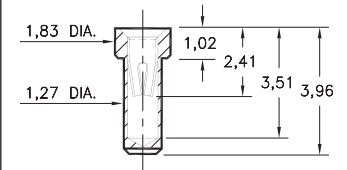
Press-fit in 1,45 mounting hole



## 9234

9234-0-15-XX-30-XX-10-0

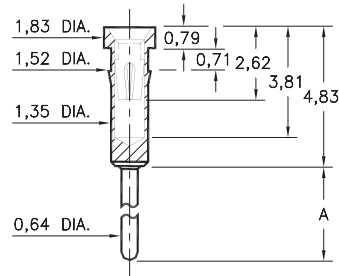
Solder mount in 1,32 min. mounting hole



## 0136/37/38/39/41/48/52

01XX-0-15-XX-30-XX-04-0

Press-fit in 1,45 mounting hole

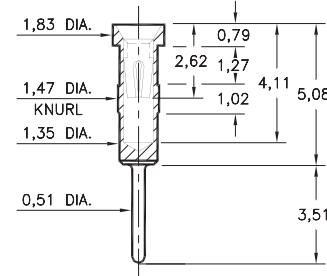


Basic Part Number	Length A
0136-0	30,86
0137-0	14,22
0138-0	5,33
0139-0	16,13
0141-0	17,78
0148-0	11,56
0152-0	10,41

## 0447

0447-0-15-XX-30-XX-04-0

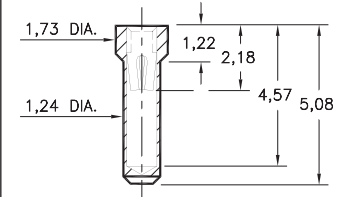
Press-fit in 1,42 mounting hole



## 5660

5660-0-15-XX-30-XX-10-0

Solder mount in 1,3 min. mounting hole



### SPECIFICATIONS:

**Shell Material:** Brass Alloy 360, 1/2 Hard

**Contact Material:** Beryllium Copper Alloy 172, HT

**Dimensions:** Millimeters

**Tolerances On:** Lengths: ± 0,13

Diameters: ± 0,051

Angles: ± 2°



**ORDER CODE:** XXXX - X - 15 - XX - XX - XX - XX - 0

**BASIC PART #**

**SPECIFY SHELL FINISH:**

- 01 5,08µm TIN/LEAD OVER NICKEL
- ◆ 80 5,08µm TIN OVER NICKEL (RoHS)
- ◆ 15 0,25µm GOLD OVER NICKEL (RoHS)

**SPECIFY CONTACT FINISH:**

- 02 2,54µm TIN/LEAD OVER NICKEL
- ◆ 84 2,54µm TIN OVER NICKEL (RoHS)
- ◆ 27 0,76µm GOLD OVER NICKEL (RoHS)

**SELECT CONTACT:**

**#30 or #32 CONTACT (DATA ON PAGE 253)**

(For alternate contact choices, see groups B and C on page 248)

