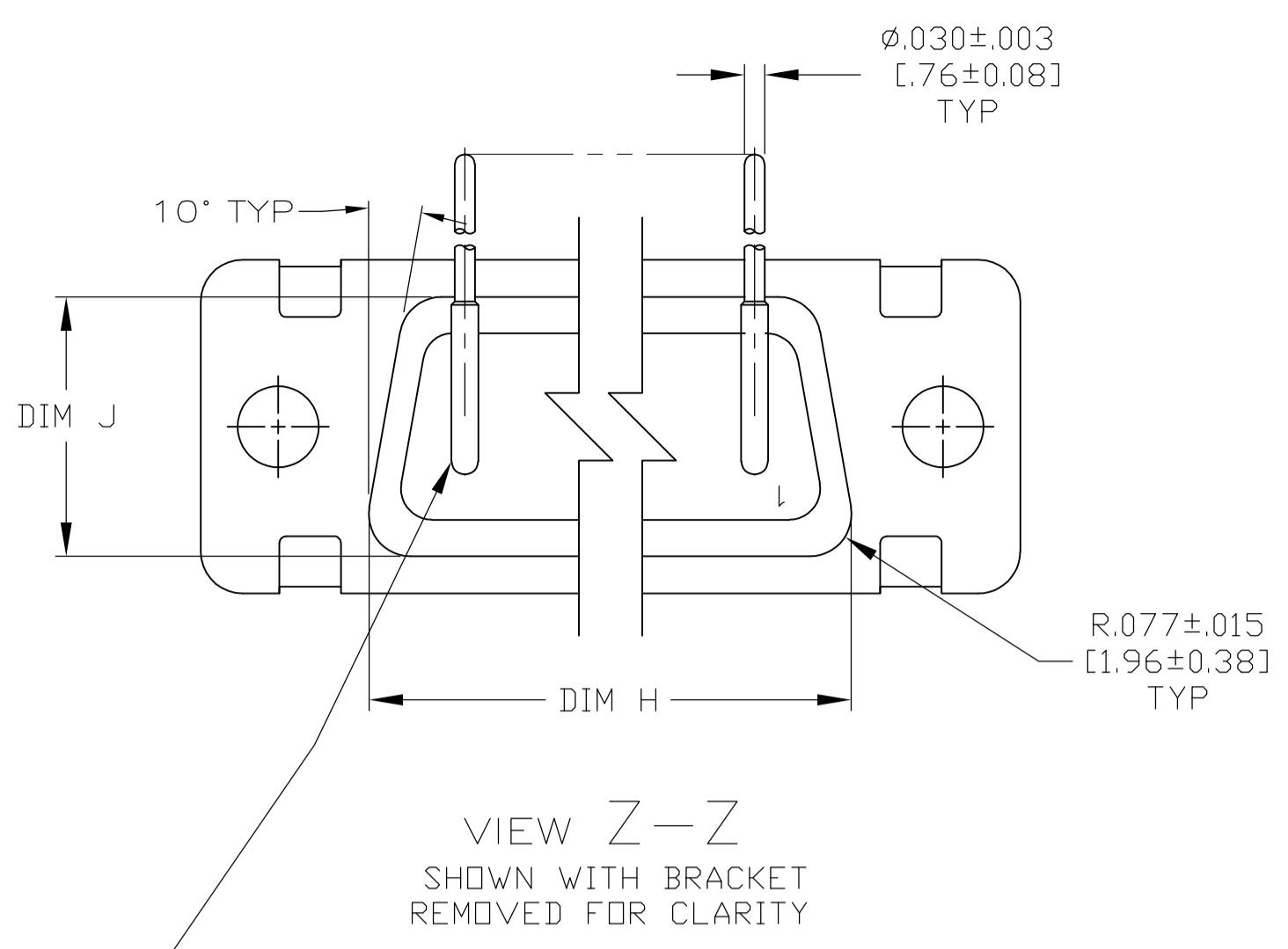
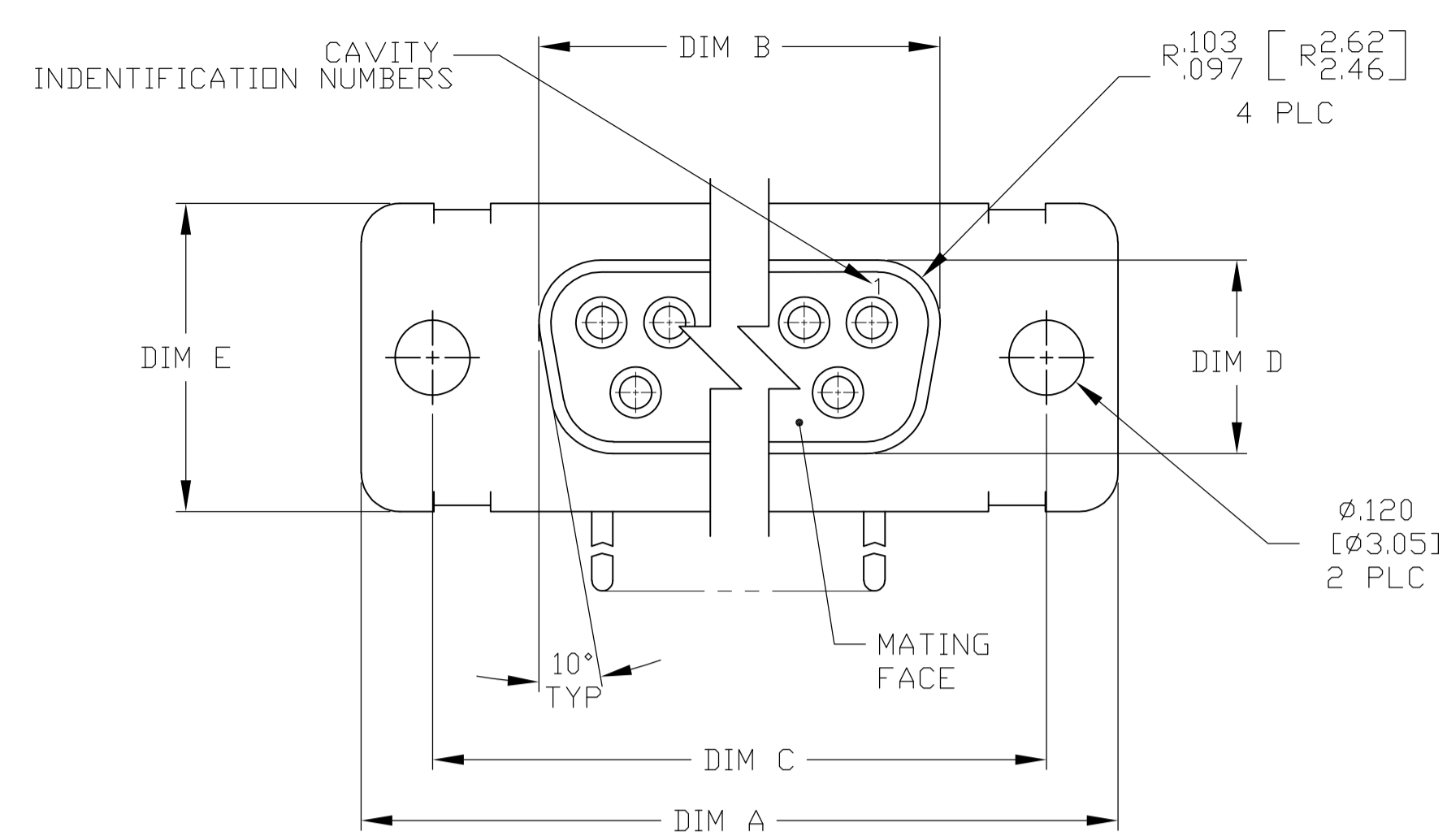
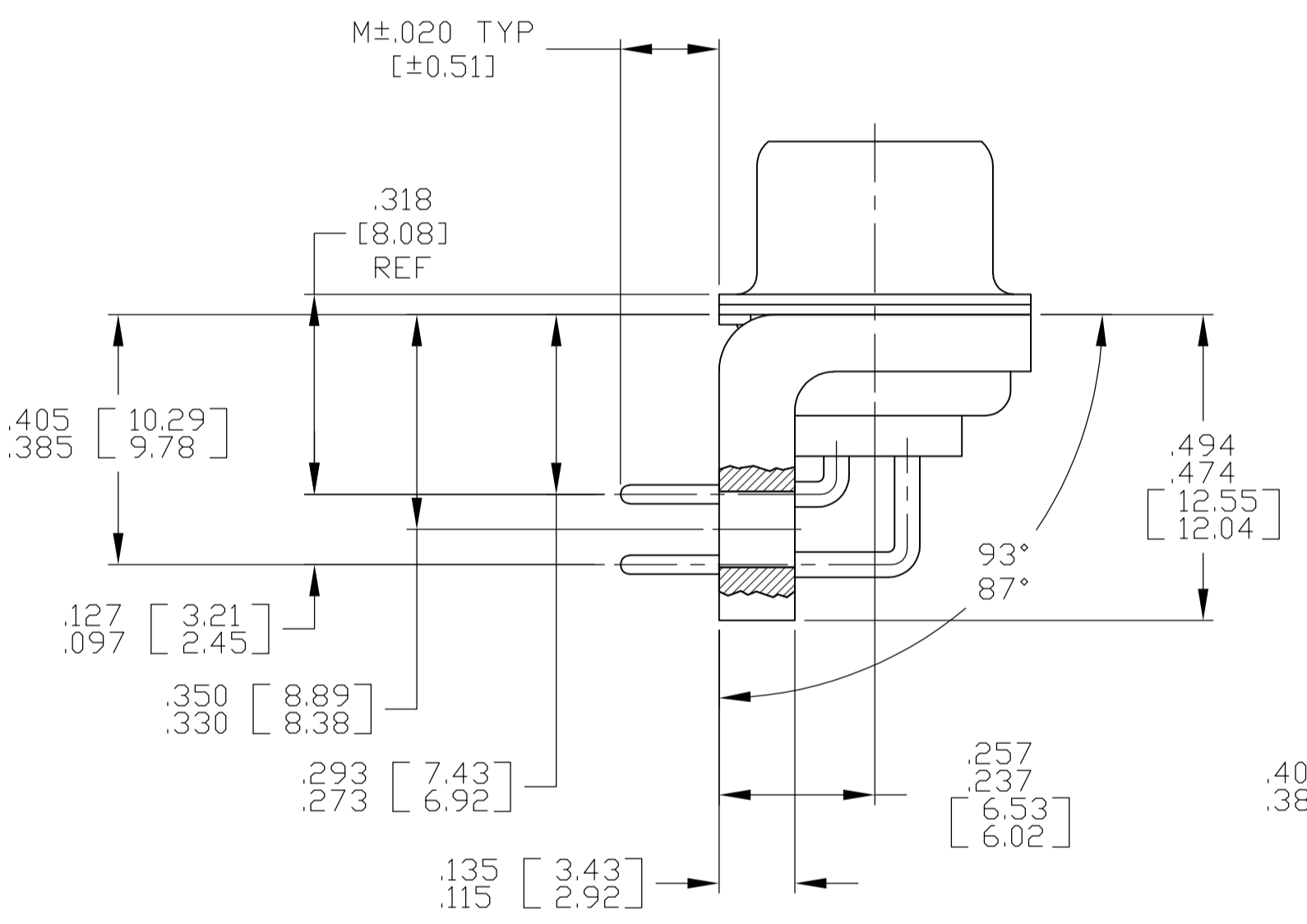
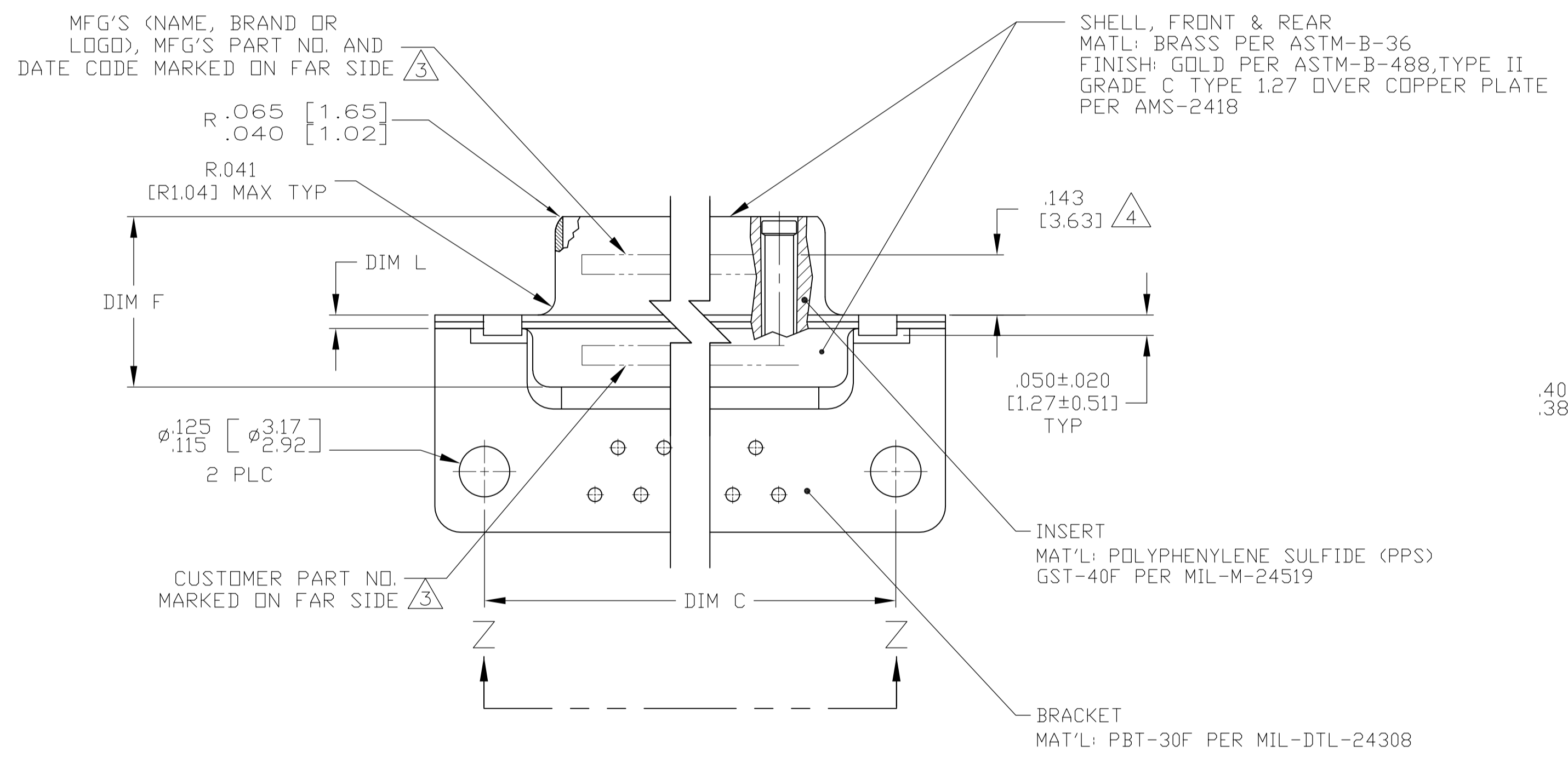


REVISIONS					
REV	DESCRIPTION	DATE	BY	APP'D	REV
G	REV PER ECO 17-007558	6-29-17	CT	DM	

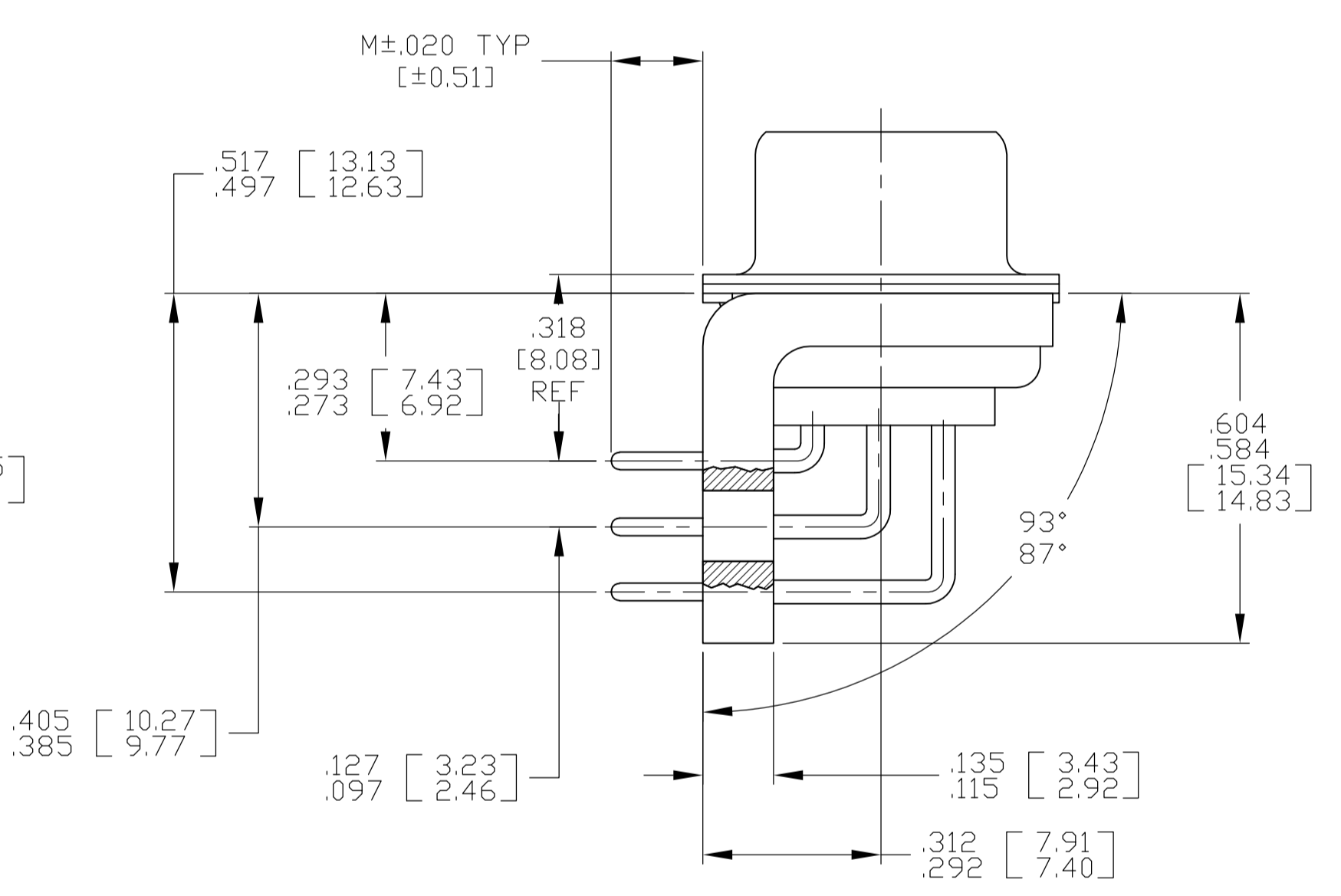


1. SEE SHEET 2 FOR RECOMMENDED P.C. BOARD LAYOUT. TRUE POSITION TOLERANCE FOR P.C. BOARD LAYOUT IS .010 [0.25] AT MAX MATERIAL CONDITION. SUGGESTED BOARD THICKNESS IS .062 [1.57].
2. THE CONNECTORS DESCRIBED IN THIS DOCUMENT MEET THE REQUIREMENTS OF MIL-DTL-24308 AND MATE WITH ANY RECEPTACLE CONNECTOR WITH SAME INSERT ARRANGEMENT.
3. MARKED .047-.062 HIGH CHARACTERS. FAR SIDE REFERS TO THE WIDE SIDE OF THE KEYSTONE. NEAR SIDE REFERS TO THE NARROW SIDE OF THE KEYSTONE. IF THE REAR SHELL IS TOO SMALL FOR THE ENTIRE CUSTOMER PART NUMBER, MARKING SHALL BE LOCATED AS FOLLOWS:
 - A. "B010811" ON FRONT SHELL, FAR SIDE.
 - B. REST OF NUMBER ON REAR SHELL, FAR SIDE.
 - C. "MFG'S" (NAME, BRAND OR LOGO), AND DATE CODE ON FRONT SHELL, NEAR SIDE.
 - D. MFG'S PART NUMBER ON REAR SHELL, NEAR SIDE.
4. POINT OF ELECTRICAL ENGAGEMENT AS MEASURED WITH A .039-.0393 DIAMETER SQUARE ENDED TEST PIN.
4. EPOXY IS APPLIED BETWEEN SHELLS AND INSERT AND ALL AROUND CONTACTS TO SEAL THE BACKSIDE OF THE ASSEMBLY FROM CONFORMAL COATING.

VIEW Z-Z
 SHOWN WITH BRACKET REMOVED FOR CLARITY
 CONTACT (QTY = NO. OF POSN)
 MATL: COPPER ALLOY
 FINISH: GOLD PER ASTM-B-488, TYPE II,
 GRADE C, CLASS 1:27 OVER COPPER PLATE
 PER AMS-2418



SHELL SIZE 1 THRU 4 CONTACT CONFIGURATION



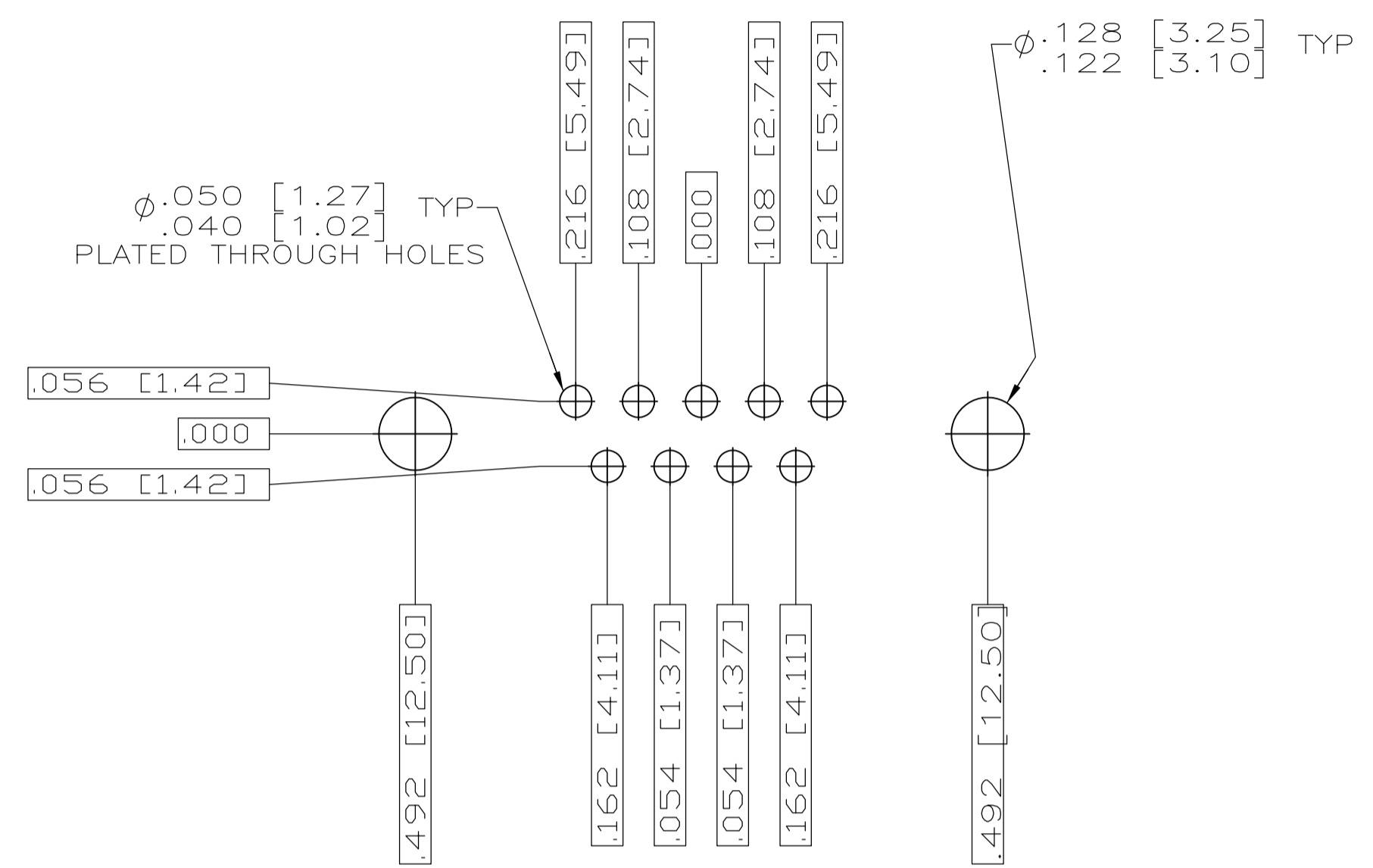
SHELL SIZE 5 CONTACT CONFIGURATION

M	L	J	H	F	E	D	C	B	A	NO OF POS	SHELL SIZE	CUSTOMER P/N ON CONNECTOR	MFG'S P/N ON CONNECTOR	PART NUMBER
.188 [4.77]	.040 [1.02] .020 [0.51]	.544 [13.82] .524 [13.31]	2.188 [55.58] 2.168 [55.07]	.439 [11.15] .419 [10.64]	.620 [15.75] .590 [14.99]	.428 [10.87] .418 [10.62]	2.411 [61.24] 2.401 [60.99]	2.069 [52.55] 2.059 [52.30]	2.650 [67.31] 2.620 [66.55]	50	5	B010811-0030	1-1883271-5	1-1883271-5
.156 [3.96]	.040 [1.02] .020 [0.51]	.544 [13.82] .524 [13.31]	2.188 [55.58] 2.168 [55.07]	.439 [11.15] .419 [10.64]	.620 [15.75] .590 [14.99]	.428 [10.87] .418 [10.62]	2.411 [61.24] 2.401 [60.99]	2.069 [52.55] 2.059 [52.30]	2.650 [67.31] 2.620 [66.55]	50	5	B010811-0028	1-1883271-0	1-1883271-0
.125 [3.17]	.049 [1.24] .029 [0.74]	.432 [10.97] .412 [10.46]	1.635 [41.53] 1.615 [41.02]	.439 [11.15] .419 [10.64]	.509 [12.93] .479 [12.17]	.316 [8.03] .306 [7.77]	1.857 [47.17] 1.847 [46.91]	1.516 [38.51] 1.506 [38.25]	2.103 [53.42] 2.073 [52.65]	25	3	B010811-0014	1883271-3	1883271-3
.125 [3.17]	.040 [1.02] .020 [0.51]	.432 [10.97] .412 [10.46]	.769 [19.53] .749 [19.02]	.439 [11.15] .419 [10.64]	.509 [12.93] .479 [12.17]	.316 [8.03] .306 [7.77]	.989 [25.12] .979 [24.87]	.648 [16.46] .638 [16.21]	1.228 [31.19] 1.198 [30.43]	9	1	B010811-0002	1883271-1	1883271-1

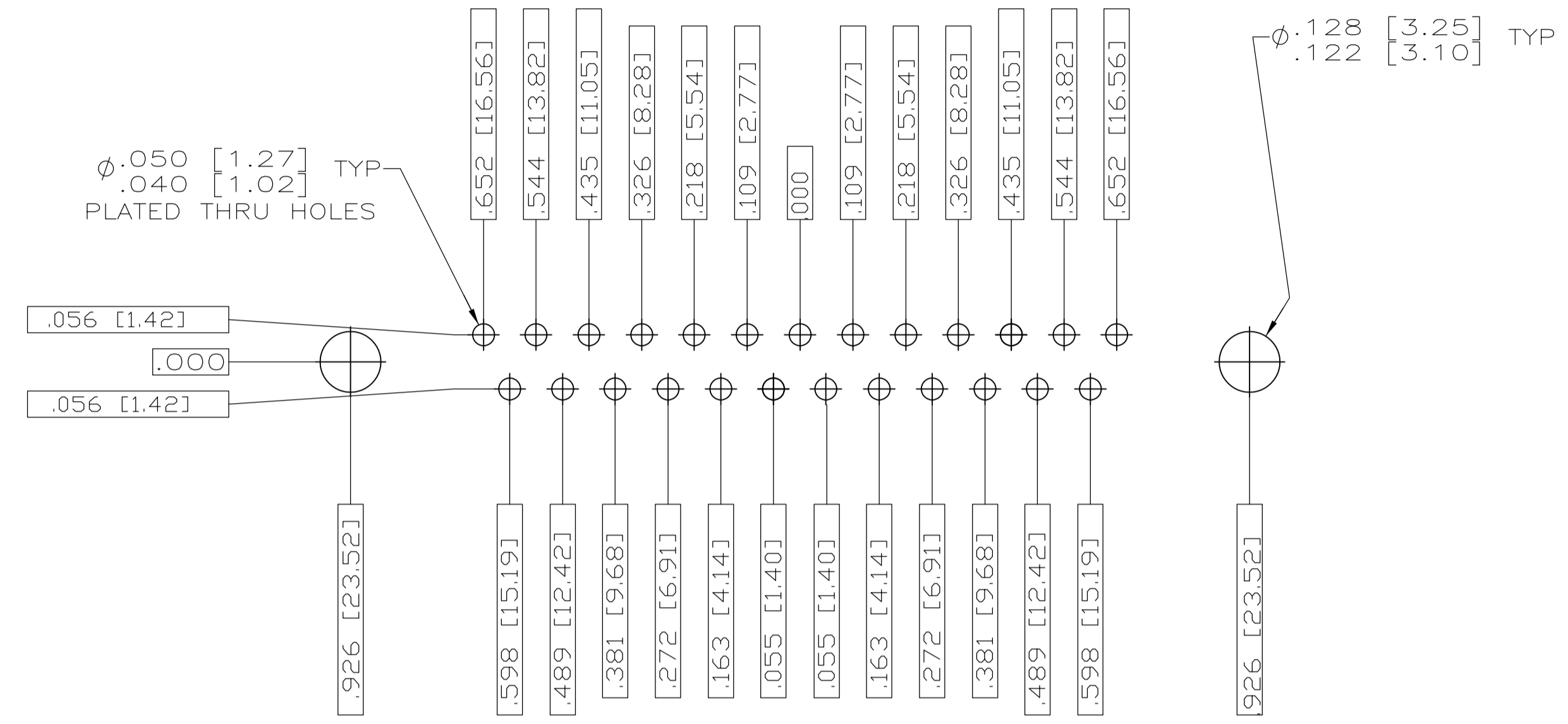
THIS DRAWING IS A CONTROLLED DOCUMENT.

DIMENSIONS: INCHES [mm]	TOLERANCES UNLESS OTHERWISE SPECIFIED:	DRAWN: C.C. THOMAS 3-1-06	DATE: 3-1-06
0 PLC ± -	1 PLC ± -	CHK: D. MILLER 3-1-06	
2 PLC ± -	3 PLC ± .005 [0.13]	APP'D: D. MILLER 3-1-06	NAME: RECEPTACLE ASSEMBLY, AMPLIMITE, RT ANGLE, SERIES 109
4 PLC ± -	ANGLES ± 1°	PRODUCT SPEC: -	APPLICATION SPEC: -
MATERIAL: SEE CALLOUTS	FINISH: SEE CALLOUTS	WEIGHT: 0	SIZE: A1
		CAGE CODE: 00779	DRAWING NO: 1883271
		CUSTOMER DRAWING	SCALE: 4:1 SHEET 1 OF 2 REV G

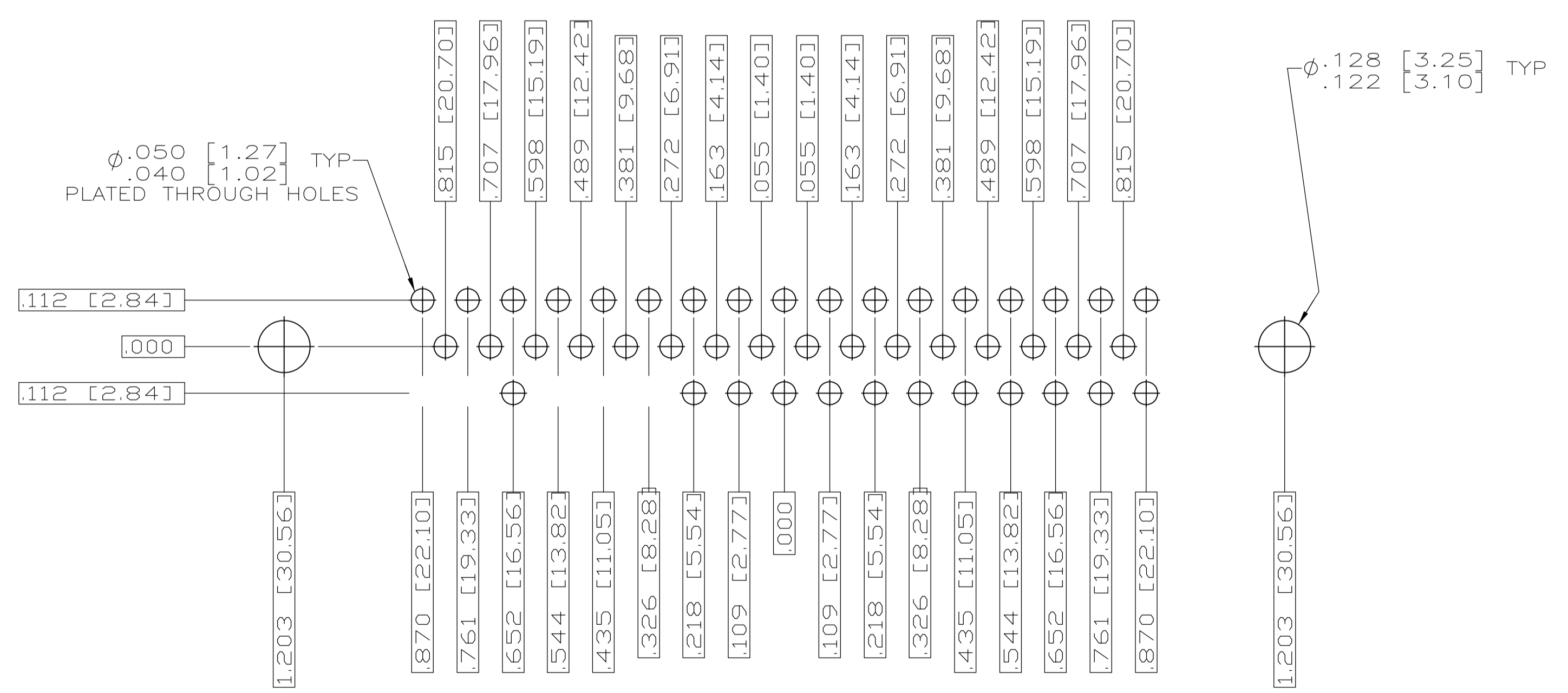
REVISIONS					
P	LYR	DESCRIPTION	DATE	DMN	APVD
-	-	SEE SHEET 1	-	-	-
D	-	REV PER ECO-08-018752	8-21-08	PK	BW



RECOMMENDED P.C. BOARD LAYOUT
SHELL SIZE 1 (9 POSITION)



RECOMMENDED P.C. BOARD LAYOUT
SHELL SIZE 3 (25 POSITION) Δ



RECOMMENDED P.C. BOARD LAYOUT
SHELL SIZE 5 (50 POSITION)

THIS DRAWING IS A CONTROLLED DOCUMENT.		DWG: C.C.THOMAS 3-1-06	TE Connectivity
DIMENSIONS: INCHES [mm]		CHK: D.MILLER 3-1-06	
TOLERANCES UNLESS OTHERWISE SPECIFIED: 0 PL ± - 1 PL ± - 2 PL ± - 3 PL ± .005 [0.13] 4 PL ± - ANGLES ± 1°		APPD: D.MILLER 3-1-06	NAME: RECEPTACLE ASSEMBLY, AMPLIMITE, RT ANGLE, SERIES 109
MATERIAL: SEE CALLOUTS		FINISH: SEE CALLOUTS	RESTRICTED TO: -
WEIGHT: 0		SIZE: A1	CAGE CODE: 00779
CUSTOMER DRAWING		DRAWING NO: 1883271	SCALE: 4:1
		SHEET: 2 OF 2	REV: G