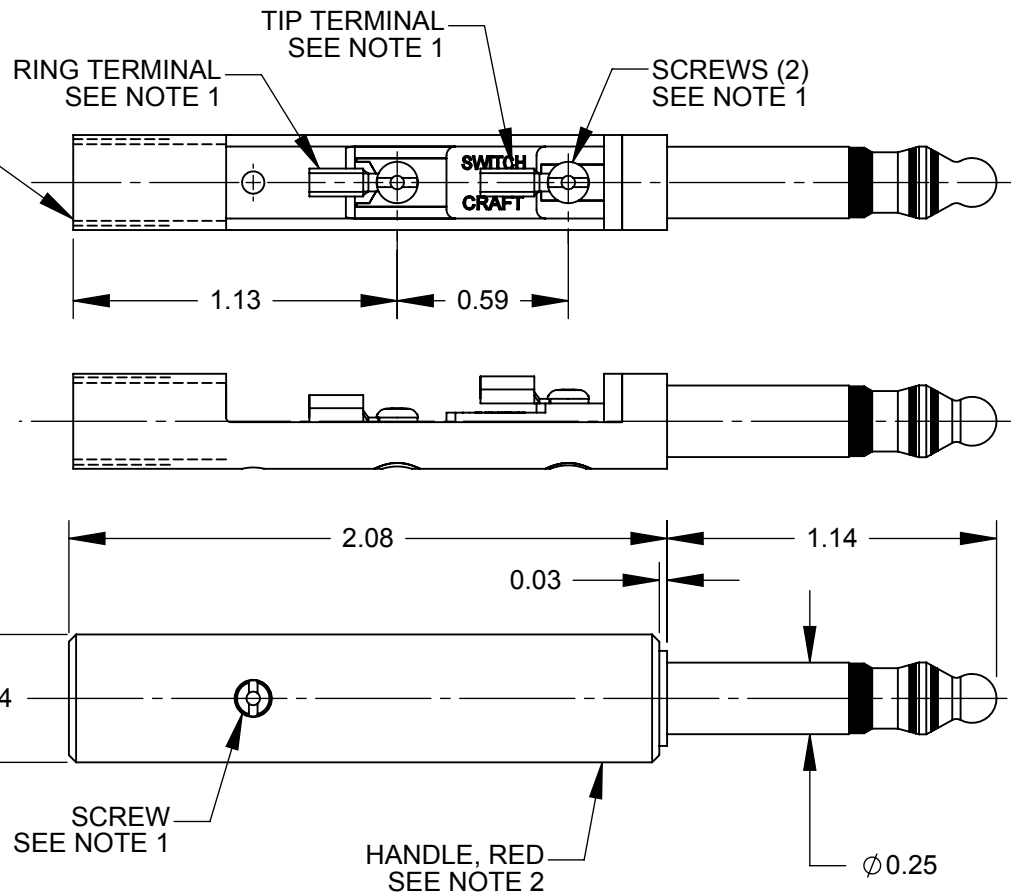
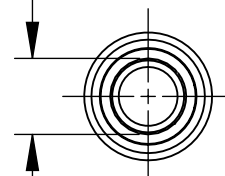


5/16-24 UNF-2B
TRUNCATED INTERNAL THREAD
0.301 MAJOR DIAMETER

Ø 0.264
I.D. REF



NOTES:

1. TERMINALS AND SCREWS ARE SHIPPED UNASSEMBLED AS HARDWARE KIT K172.
2. HANDLE SHIPPED UNASSEMBLED.
3. MATERIALS:
TIP ROD, RING & SLEEVE - COPPER ALLOY
INSULATION - THERMOPLASTIC, BLACK
TERMINALS - COPPER ALLOY, TIN PLATED
SCREWS- COPPER ALLOY
HANDLE - THERMOPLASTIC, RED
4. THIS PRODUCT IS RoHS COMPLIANT.

CUSTOMER DRAWING

					<div>UNLESS OTHERWISE SPECIFIED</div> <div>1. ALL DIMENSIONS IN INCHES</div> <div>- TWO PLACE DECIMALS ±0.02</div> <div>- THREE PLACE DECIMALS ±0.005</div>	THIS DRAWING DESCRIBES A DESIGN CONSIDERED PROPRIETARY IN NATURE, DEVELOPED AND MANUFACTURED BY SWITCHCRAFT INC. AND IS RELEASED ON A CONFIDENTIAL BASIS FOR IDENTIFICATION PURPOSES ONLY.										
						SIZE	WIDTH		MULT		LBS/M		TEMPER			
						FINISH						MATERIAL				
						SPEC No.						SPEC No.				
						FIRST USED ON				SCALE		Switchcraft®				
										1.5:1						
A	25653	6/14/07	RS	TJK	DO NOT SCALE DRAWING	DATE DRAWN	BY	CHKD		APVD		SHEET 1 OF 1				
						1/10/11	RS	RS		TJK						
REV	ECO NUMBER	DATE	BY	APVD		NAME						PART No.				REV
REVISIONS							LITTEL PLUG, RoHS						482X			

DO NOT SCALE DRAWING

SolidWorks CAD File

