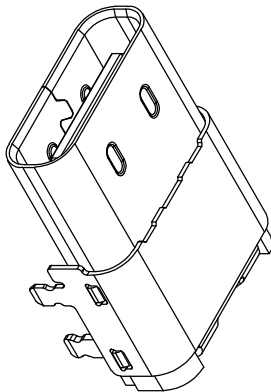
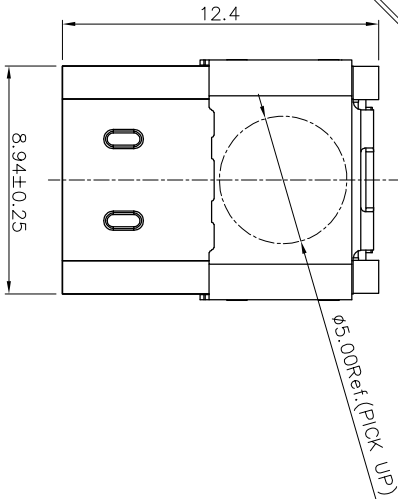
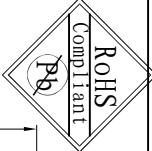
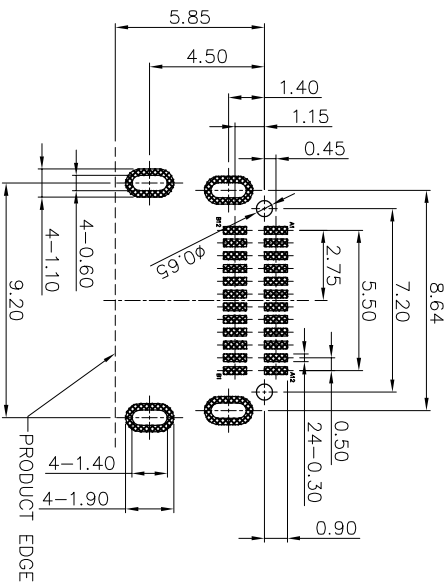
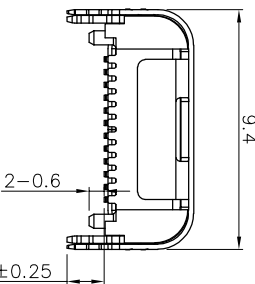
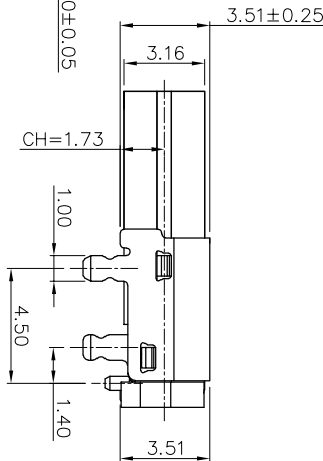
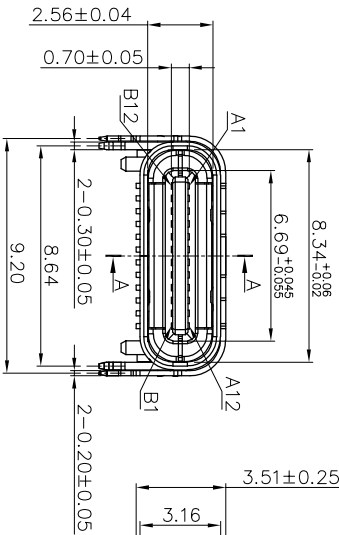


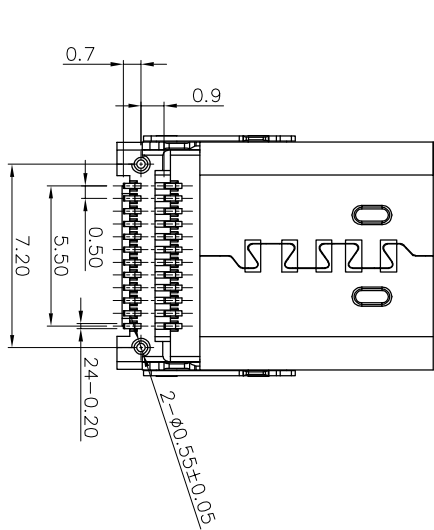
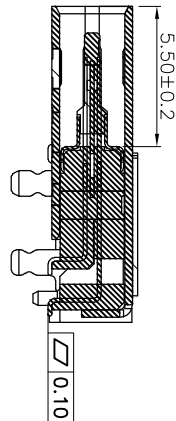
REV.	ECN NO.	DESCRIPTION	DATE	DESIGN



NOTE:
1.MATERIAL:
1.1 INSULATOR: HIGH TEMPERATURE PLASTIC UL 94V-0;
1.2 CONTACT: COPPER ALLOY
1.3 SHELL:STAINLESS STEEL
2.PLATING
2.1 TERMINAL CONTACT: (SEE TAB) SELECTIVE GOLD PLATING IN THE CONTACT AREA AND G/F PLATING IN THE SOLDER TAIL AREA WITH 50u" NICKEL UNDER PLATING OVERALL.
2.2 SHELL: 50u" Min. NICKEL ALL OVER.



RECOMMENDED P.C.B LAYOUT (TOP VIEW)



TOLERANCE			NAME(INTENDED USE)	
CUSTOMER DRAWING			DRAWING NO.	
X.X	±0.30	X.X	±10°	TITLE:
.XX	±0.20	.X	± 8°	CF 24P母座板上四脚加长12.4
.XXX	±0.10	.XX	± 5°	
UNITS	mm		DESIGN: ZXM	
MATERILA	----		CHED:	
FINISH	-----		APPD:	

Guangdong FUYOU Precision Electronic Technology Co.,LTD.

SCALE 1:1

SHEET 1/2

REV. A