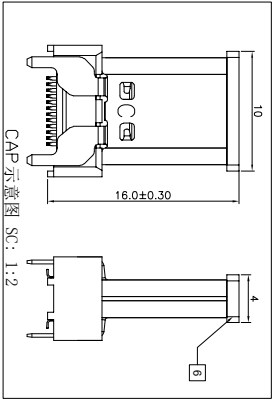
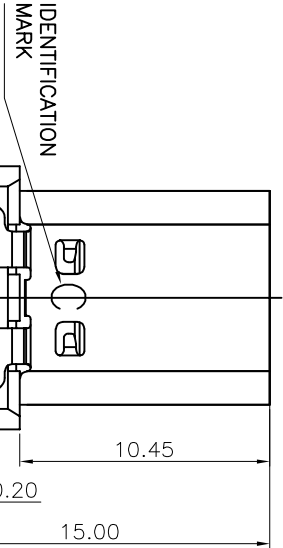
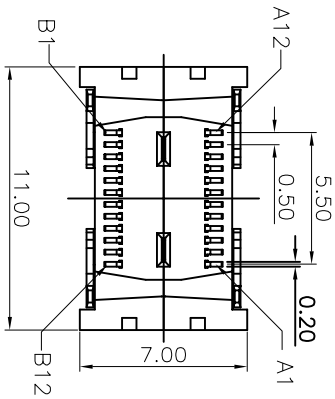
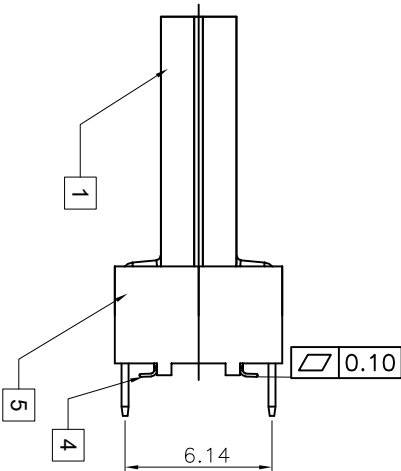
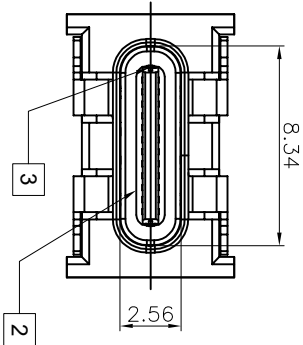


RECOMMEND P.C.B LAYOUT(COMPONENT SIDE)

TOLERANCE FOR PCB LAYOUT IS ± 0.05

- NOTE:
- 1.Contact Resistance:40mOHM Max.;
 - 2.Dielectric Withstanding Voltage:100V AC For 1 Minute;
 - 3.Insulation Resistance:100M OHM Min.;
 - 4.Mating And Unmating Force:
Mating Force: 5~20N
Unmating Force: 8~20N;
6~20N AFTER TEST;
 - 5.Durability:10000 Cycles;



USB TYPE-C PIN ASSIGNMENTS	
PIN NUMBER	SIGNAL NAME
A1	GND
A2	SSTPp1
A3	SSTPn1
A4	Vbus
A5	CC1
A6	Dp1
A7	Dn1
A8	SBU1
A9	Vbus
A10	SSRPn2
A11	SSRPp2
A12	GND

PIN NUMBER	SIGNAL NAME
B12	GND
B11	SSRPp1
B10	SSRPn1
B9	Vbus
B8	SBU2
B7	Dn2
B6	Dp2
B5	SBU1
B4	Vbus
B3	SSRPn2
B2	SSRPp2
B1	GND

Item	Title	Material	Dispose	Q'Ty
1	Shell	SUS304	Ni:30u" Min.	1PCS
2	GND Plate	SUS301		2PCS
3	Mid Plate	SUS301		1PCS
4	Contact	C7025	Mating Area: Gold Solder Tails: Matt Tin	2PCS
5	InsertMolding	LCP E6808	UL 94V-0 Black	1PCS
6	COVER	LCP E6808	UL 94V-0 Black	1PCS

TOLERANCE		NAME(INTENDED USE)	
X.X	±0.30	X.X	±10°
.XX	±0.20	.X	± 8°
.XXX	±0.10	.XX	± 5°
UNITS	mm	DESIGN:	ZXM
MATERILA	----	CHED:	
FINISH	-----	APPD:	

DRAWG NO.	
FY23-41TC242F415-01	

SCALE	SHEET	REV.
1:1	1/2	A