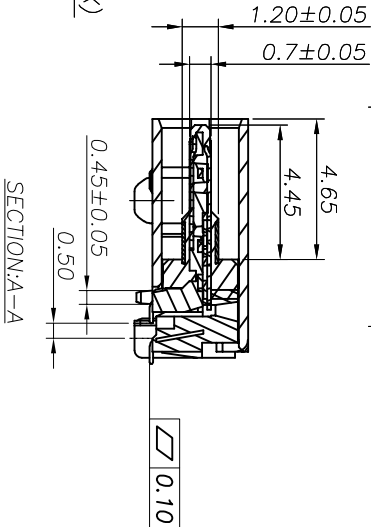
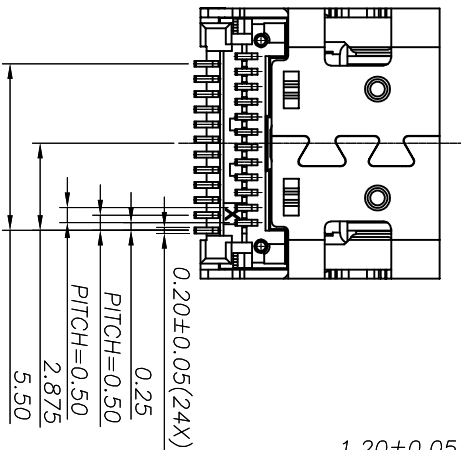
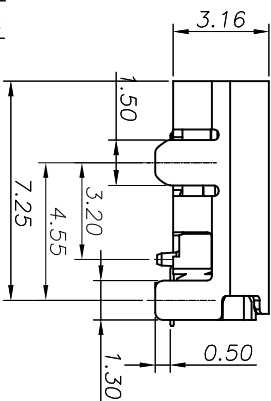
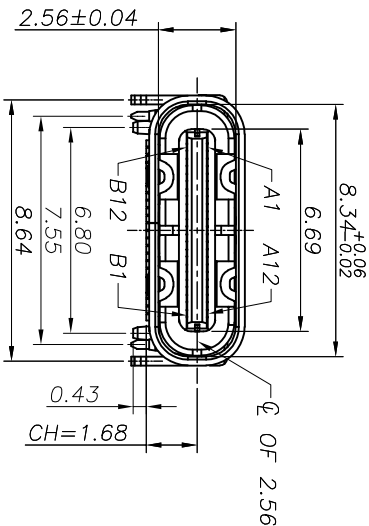
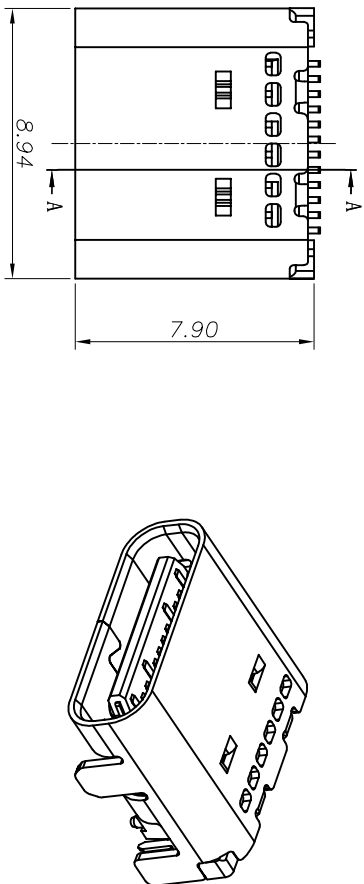


申明：凡是没有产品料号或有“PRELIMINARY”标示的产品图均为临时图面暂不能生产/DECLARATION: ALL PRODUCT DRAWINGS WITHOUT THE PART NUMBER OR WITH “PRELIMINARY” LABEL ARE TEMPORARY DRAWINGS CAN NOT BE PRODUCED

| REV. | ECN NO. | DESCRIPTION | DATE | DESIGN |
|------|---------|------------------|------------|---------|
| A | --- | INITIAL RELEASED | 2022.03.08 | Neo.Liu |

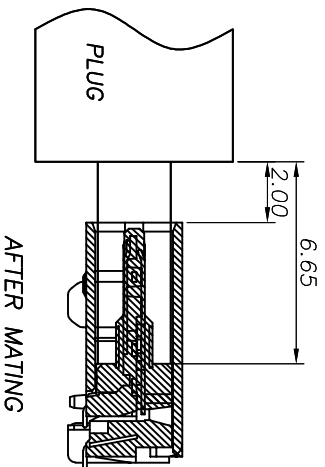


- NOTE:
- MATERIAL SPECIFICATION:
 - HOUSING:HIGH TEMPERATURE RESISTANT PLASTIC,UL94 V-0.
 - CONTACTS:COOPER ALLOY
 - MID PLATE: STAINLESS STEEL
 - FRONT SHELL: STAINLESS STEEL
 - EMI PLATE: STAINLESS STEEL
 - PLATING SPECIFICATION:
 - CONTACTS:
 - 50u" MIN. UNDER PLATED OVER ALL.
 - AU PLATED ON THE FUNCTIONAL AREA OF CONTACT.
 - FRONT SHELL:
 - 30u" MIN. UNDER PLATED OVER ALL.
 - MID PLATE:
 - 30u" MIN. UNDER PLATED OVER ALL.
 - EMI PLATE:
 - 80u"MIN. PLATED OVER ALL
 - CLEAR ONLY
 - MECHANICAL PERFORMANCE,
 - INSERTION FORCE: 0.5~2.0kgf.
 - REMOVAL FORCE: 0.8kgf~2.0kgf.
 - DURABILITY: 10000 CYCLES.
 - ELECTRICAL PERFORMANCE,
 - CURRENT RATING:5.0A
 - VOLTAGE RATING:5.0V
 - LCCR:
 - VBUS & GND PINS AND OTHER PINS: 40mΩ/PIN MAX.
 - SHIELD: 50mΩ/MAX.
 - LCCR MAX. CHANGE OF ALL PINS: 10mΩ.
 - INSULATION RESISTANCE: 100MΩ MIN
 - DIELECTRIC WITHSTAND VOLTAGE,AC 100V FOR 1 MINUTE.
 - ENVIRONMENTAL PERFORMANCE:
 - OPERATING TEMPERATURE: -25°C~+85°C.
 - REFLOW:
 - THE PEAK TEMPERATURE ON THE BOARD SHALL BE MAINTAINED FOR 10 SECONDS AT 260°C.
 - TID NUMBER:2780

| TOLERANCE | | NAME(INTENDED USE) CUSTOMER DRAWING | | 广东富盈兴业精密科技实业有限公司 Guangdong FUYU Precision Technology Industrial Co.,LTD. | |
|-----------|-----------|--|----------------|---|--------------|
| X.X | ±0.30 X | ±10' | PART NO. | TITLE: USB CF 24PIN SMT TYPE TOP MOUNT WITH POST | |
| .XX | ±0.20 .X | ± 8' | SEE TABLE1 | | |
| .XXX | ±0.10 .XX | ± 5' | | | |
| UNITS | mm | | DESIGN:Neo.Liu | DRAWG NO. FY23-011TC242F179-01 | |
| MATERILA | | | CHED: | | |
| FINISH | | | APPD: | | |
| | | | | SCALE 1:1 | SHEET 1/3 |
| | | | | | REV. A |

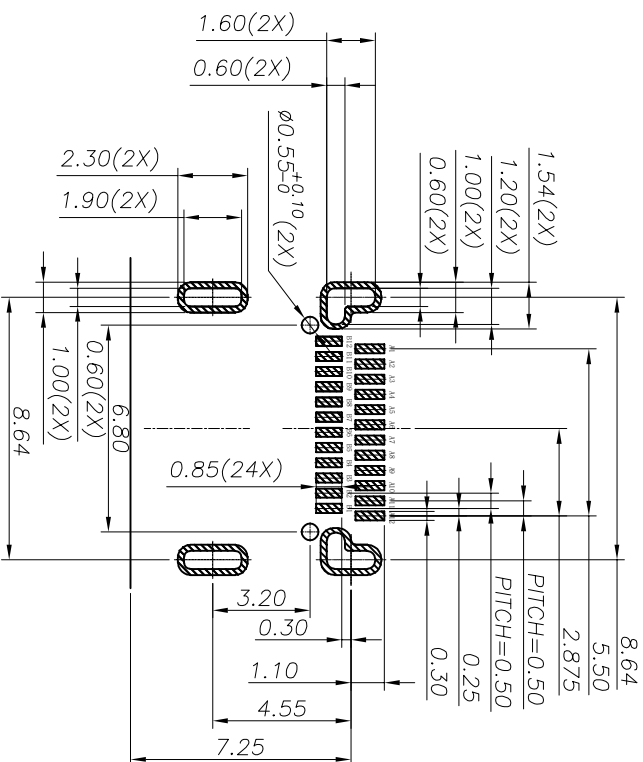
申明：凡是没有产品料号或有“PRELIMINARY”标识的产品图均为临时图面暂不能生产 /DECLARATION: ALL PRODUCT DRAWINGS WITHOUT THE PART NUMBER OR WITH “PRELIMINARY” LABEL ARE TEMPORARY DRAWINGS CAN NOT BE PRODUCED

| REV. | ECN NO. | DESCRIPTION | DATE | DESIGN |
|------|---------|------------------|------------|---------|
| A | ---- | INITIAL RELEASED | 2022.03.08 | Neo.Liu |



USB TYPE-C PIN ASSIGNMENTS

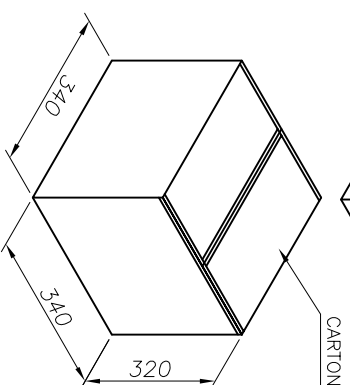
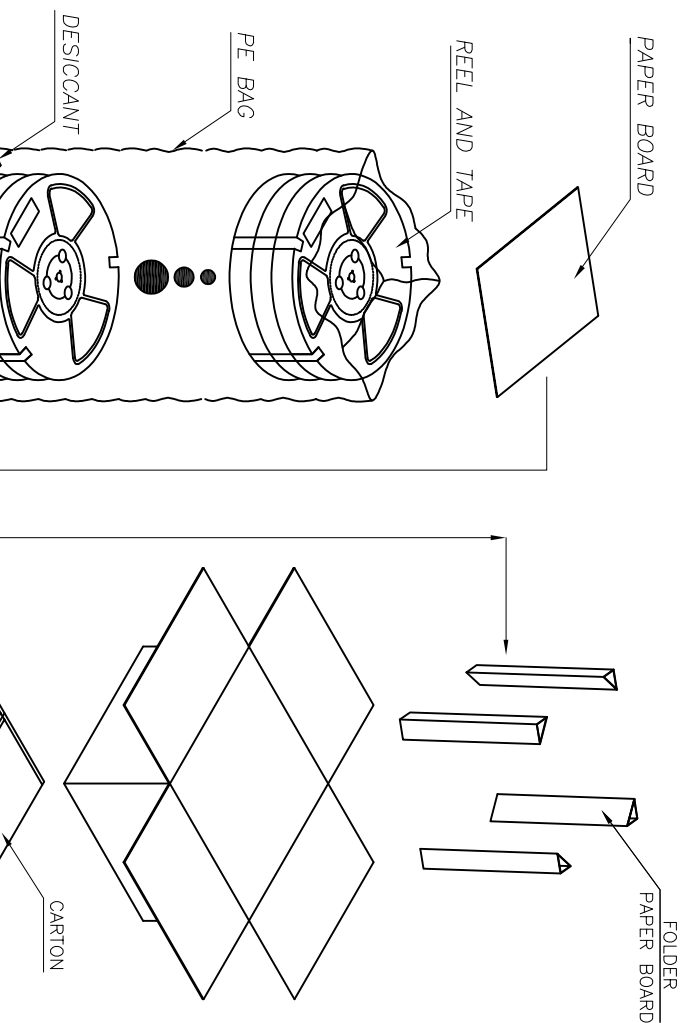
| PIN NUMBER | SIGNAL NAME | PIN NUMBER | SIGNAL NAME |
|------------|-------------|------------|-------------|
| A1 | GND | B12 | GND |
| A2 | TXp1 | B11 | RXp1 |
| A3 | TXn1 | B10 | RXn1 |
| A4 | VBUS | B9 | VBUS |
| A5 | CC1 | B8 | SBUS2 |
| A6 | Dp1 | B7 | Dn2 |
| A7 | Dn1 | B6 | Dp2 |
| A8 | SBU1 | B5 | CC2 |
| A9 | VBUS | B4 | VBUS |
| A10 | RXn2 | B3 | TXn2 |
| A11 | RXp2 | B2 | TXp2 |
| A12 | GND | B1 | GND |





RECOMMENDED PCB LAYOUT(TOP VIEW)
THICKNESS 0.60MM;DEFAULT TOLERANCE:±0.05

| TOLERANCE | | NAME(INTENDED USE) CUSTOMER DRAWING | | 广东富盈兴业精密科技实业有限公司 Guangdong FUYU Precision Technology Industrial Co.,LTD. | | |
|-----------|-------|--|------|---|-------|------|
| X.X | ±0.30 | X.X | ±10° | PART NO. SEE TABLE1 | | |
| .XX | ±0.20 | .X | ± 8° | | | |
| .XXX | ±0.10 | .XX | ± 5° | DESIGN:Neo.Liu | | |
| UNITS | mm | | | | | |
| MATERILA | | | | CHED: | | |
| FINISH | | | | | | |
| | | APPD: | | DRAWG NO. FY23-011TC242F179-01 | | |
| | | | | | | |
| | | | | SCALE | SHEET | REV. |
| | | | | 1:1 | 2/3 | A |

| REV. | ECN NO. | DESCRIPTION | DATE | DESIGN |
|------|---------|------------------|------------|---------|
| A | --- | INITIAL RELEASED | 2022.03.08 | Neo.Liu |



| | | | | | | |
|------------|-----------|--|------------|---|--|--|
| TOLERANCE | | NAME(INTENDED USE) CUSTOMER DRAWING | | 广东富盈兴业精密科技实业有限公司 Guangdong FUYU Precision Technology Industrial Co.,Ltd. | | |
| X.X ±0.30 | X.* ±10° | PART NO. | SEE TABLE1 | TITLE: USB CF 24PIN SMT TYPE TOP MOUNT WITH POST | | |
| .XX ±0.20 | .X* ± 8° | | | | | |
| .XXX ±0.10 | .XX* ± 5° | DESIGN:Neo.Liu | | DRAWG NO. FY23-011TC242F179-C | | |
| UNITS | mm | CHED: | |  | | |
| MATERILA | | APPD: | |  | | |
| FINISH | | | | SCALE SHEET REV. | | |
| | | | | 1:1 3/3 A | | |