

# SPECIFICATION FOR APPROVAL

## 承 認 書

**CUSTOMER**

客戶名稱：

**NUMBER**

编号: L072-100

**DESCRIPTION**

品 名： SMD POWER INDUCTORS

**QUANTITY**

數量： 10PCS

**PART NO.**

型 號： CDH129 – 100M

**DATE**

日期： 2024-06-26

**CUSTOMER PART NO.**

客戶料號：

**NOTE**

注解：

**APPROVAL SIGNATURE**

客戶承認簽章

Approved By 核 准	Checked By 审 查	Drawn By 制 作
李 庆 辉	苏 高 峰	劳 水 花

深圳市柯爱亚电子有限公司

**Shenzhen Ceaiya Electronics Co., Ltd.**

深圳地址：深圳市龙华区高新技术开发区捷顺科技中心 B706

东莞地址：东莞市清溪镇力合紫荆智造中心 10 栋一单元

Http://www.szceaiya.com      Tel: 0769-89333213





## SPECIFICATIONS

TYPE:

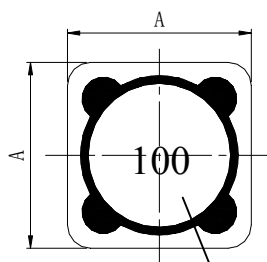
**CDH129-100M**

### 1. Scope

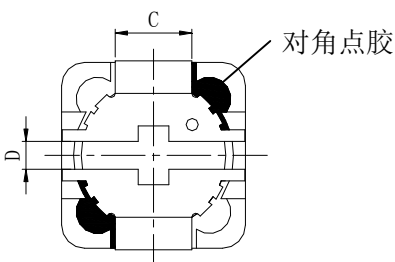
This specification apply for CDH129 of power inductors

### 2. Appearance

#### 2-1.Dimensions(mm)



#### 2-2.Recommended Land



A	12.5mm(Max)
B	9.8mm(Max)
C	5.0 mm
D	2.0 mm

Font size: Width 7.1\*High3 Song ti

\* Dimension without tolerance is approx.

### 3. Coils Specification

#### 3-1. Connection (Bottom View)



“S” is winding start

#### 3-2. Turns and Wire

Terminal	S-F
Turns	12.5 Ts
Wire	0.45mm*2P G1 P180

\* Winding Turns are approx.

**LEAD-FREE**

**RoHS**  
Compliance

Note :

Spec. No.

L072-100

2/6

## SPECIFICATIONS

TYPE:

**CDH129-100M**

### 3-3. Electronical characteristics

Item	Specifications	Measuring Conditions	Measuring Instrument
Inductance	10 $\mu$ H $\pm$ 20% Within	1KHz/0.25V	CH1062
D.C.R	23m $\Omega$ Max	25 $^{\circ}$ C	HIOKI 3540
I.D.C※	6.3A	1KHz/0.25V	CH1062&Chroma1320

※ This indicates the value of current when the inductance is 35% lower than its initial value at D.C superposition or D.C current when temperature rise  $\Delta T=40^{\circ}\text{C}$  whichever is lower .( $T_a=20^{\circ}\text{C}$ )

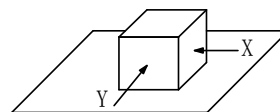
## 4. General Characteristics

4-1. Storage Temperature range :  $-40^{\circ}\text{C} \sim +100^{\circ}\text{C}$

4-2. Operating temperature range:  $-40^{\circ}\text{C} \sim +100^{\circ}\text{C}$  (Including coil's self temperature rise)

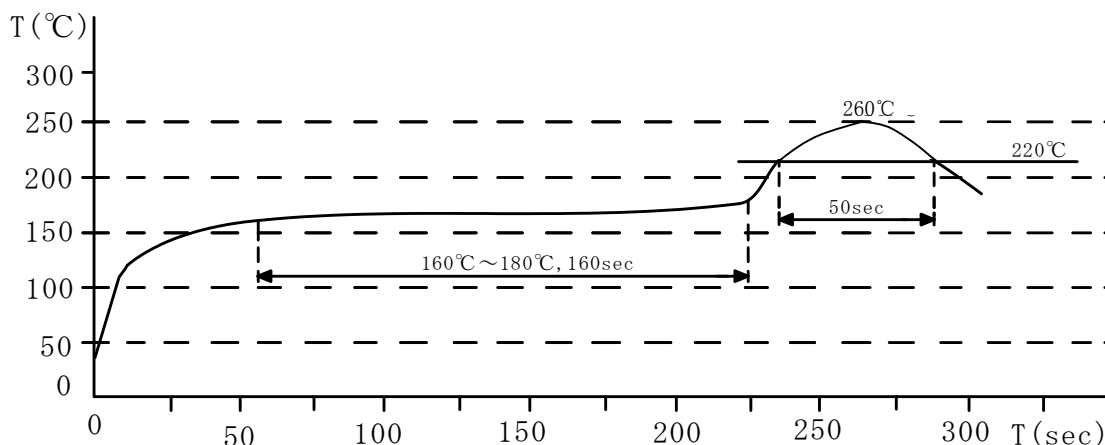
4-3. External appearance : No external defects can be found in the visual inspection.

4-4. Electrode strength : No electrode detachment should be found when the device is pushed in two directions of X and Y with the force of 5.0N for  $10 \pm 2$  seconds after soldering between copper plate and the electrodes.  
(Refer to figure at right)



4-5. Vibration test : Inductance deviation is within  $\pm 10\%$  after 1 hour sweeping vibration in each three directions, namely, forward and backward, up and down, right and left. The frequency is  $10 \sim 55 \sim 10\text{Hz}$  and the amplitude of 1 minute cycle is 1.5mm PP.

4-6. Recommended reflow condition :



Note :

Spec. No.

L072-100

3/6

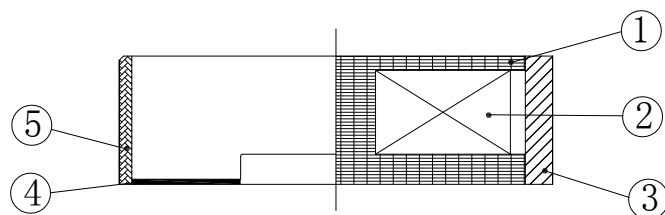
## SPECIFICATIONS

TYPE:

**CDH129-100M**

4-7.Humidity test : Inductance deviation is within  $\pm 5.0\%$  after  $96 \pm 4$  hours test under the condition of relative humidity of  $90 \sim 95\%$  and temperature of  $60 \pm 2^\circ\text{C}$ , and 1 hour storage under room ambient conditions after the device is wiped with dry cloth.

## 5. Construction and materials



No.	Part name	Material	Ceaiya P/N
①	Drum Core	Ni-Zn Ferrite Core	(TY)
②	Wire	Polyurethane enameled copper wire	3210450
③	Ring Core	Ni-Zn Ferrite Core	(TY)
④	Adhesive	Epoxy Resin	7001006(007)
⑤	Electrode	Cu + Sn plating	(LC)

Note :

Spec. No.

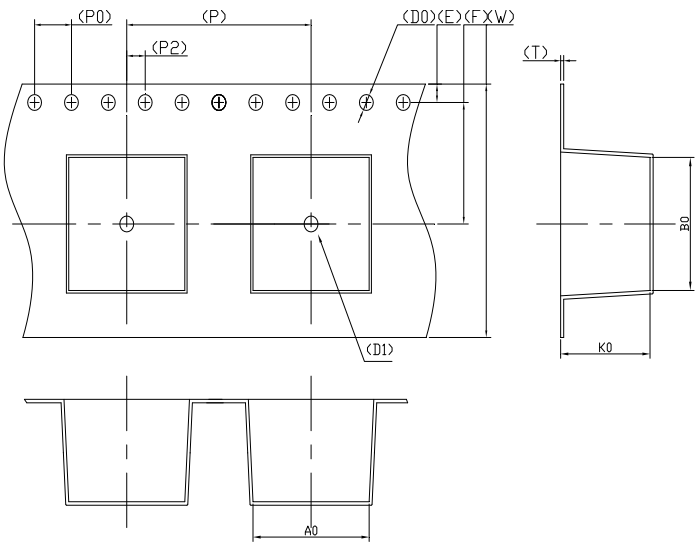
L072-100

4/6

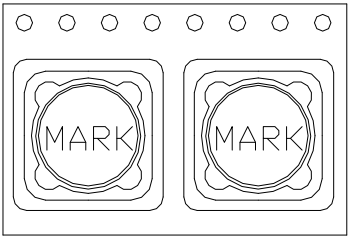
SPECIFICATIONS

TYPE:  
**CDH129-100M**

6. TAPE DIMENSIONS :



W	$24.00 \pm 0.30$	P	$16.00 \pm 0.10$	A0	$12.70 \pm 0.10$	D1	$\phi 1.50 \text{ MIN}$
T	$0.50 \pm 0.05$	P0	$4.00 \pm 0.10$	B0	$12.70 \pm 0.10$	D0	$\phi 1.50 \pm_{0}^{0.10}$
E	$1.75 \pm 0.10$	P2	$2.00 \pm 0.10$	K0	$9.90 \pm 0.10$	F	$11.50 \pm 0.10$

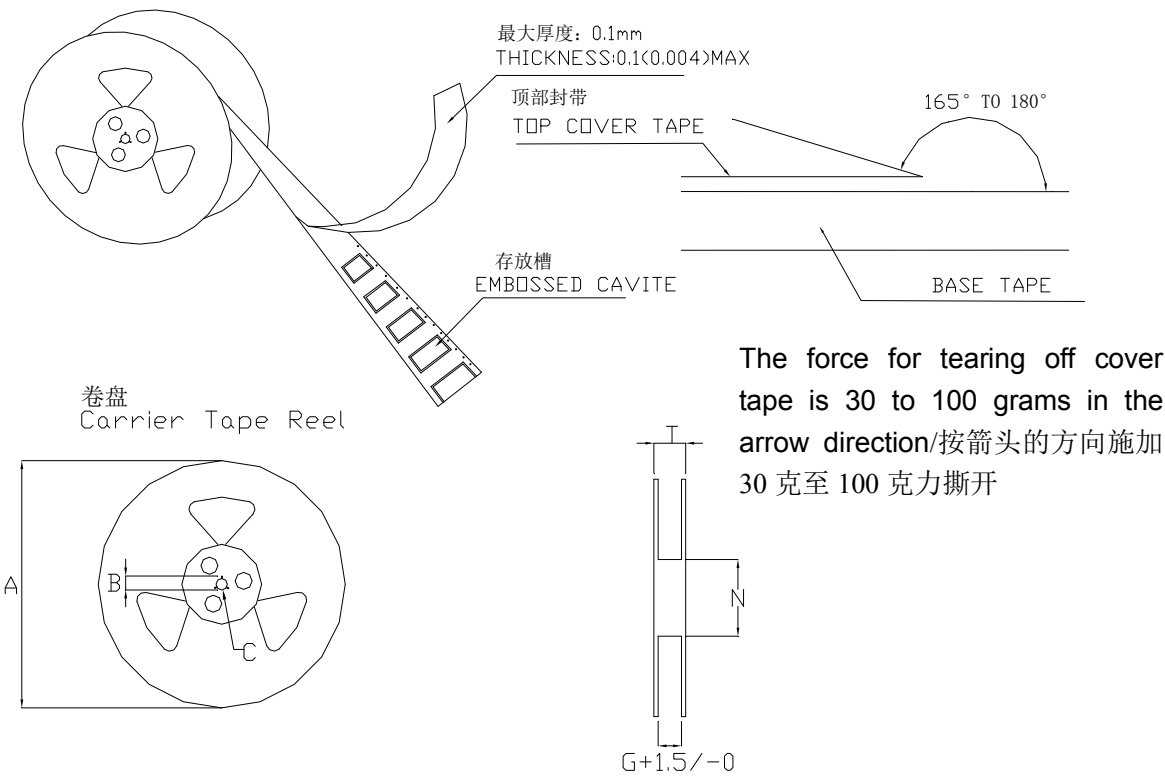


Note :	Spec. No. L072-100 5/6
--------	------------------------------

SPECIFICATIONS

TYPE:  
**CDH129-100M**

7. TAPE REEL DIMENSIONS :



单位：毫米

Type	A	B	C	G	N	T
24mm	330	21±0.8	13±0.2	24.4	100	28.4

PACKAGING QUANTITY :  
250 PCS /REEL

Note :	Spec. No. L072-100 6/6
--------	------------------------------