

MESSRS.

SPECIFICATION FOR APPROVAL**承 認 书**

Product	MAGNETIC BUZZER(SMD)
Part No.	HTV85058
Customer Approval	

Approved By	Checked By	Made By
王台平 JAN-10-2019	曹丽萍 JAN-10-2019	LILY JAN-10-2019

常 州 华 龙 电 子 有 限 公 司**DRAGONSTATE ELECTRONIC CORPORATION**

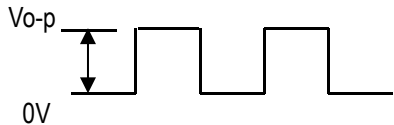
中国江苏省常州市新区电子园新四路 36 号

Tel: +86-519-85110078. 86-519-85106698, Fax: +86-519-85101081

EDITION:1.1

1. Specifications

HTV85058(RoHS)

Items		Units	Specifications	Conditions
01	Rated Voltage	Vo-p	5.0	
02	Operating Voltage	Vo-p	3.6~6	
03	Consumption Current	mA (max)	150	Standard State, Standard Drive Circuit. Rated Voltage,Rated Frequency ,Distance at 10cm free air,Square Wave 1 / 2 Duty
04	Sound Output	dB (min)	100	
05	Rated Frequency	Hz	4600	
06	Coil Resistance	Ω	13 ± 3	At Basic State
07	Operating Temp.	$^{\circ}\text{C}$	-20 ~ +60	
08	Storage Temp.	$^{\circ}\text{C}$	-30 ~ +80	
09	Weight	Gram	0.8	
11	Housing Material		LCP(Black)	
12	Leading Pin		Tin Plated Brass(Sn)	See appearance drawing

2.Test Condition

STANDARD

 Temperature : 15 ~ 35 $^{\circ}\text{C}$

Relative humidity : 25% ~ 85%,

Atmospheric pressure : 860mbar to 1060mbar.

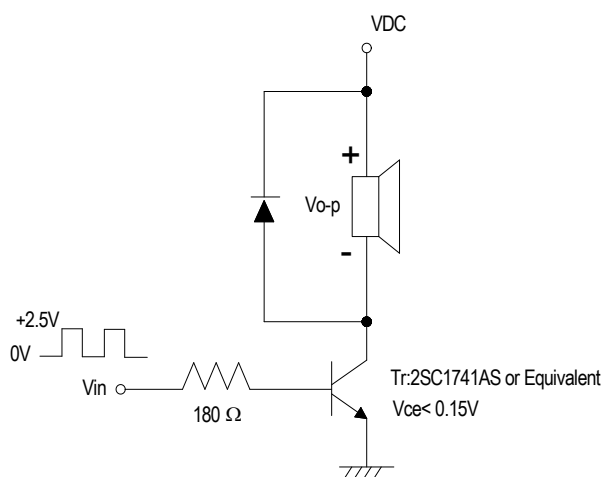
JUDGEMENT

 Temperature : 20 \pm 3 $^{\circ}\text{C}$

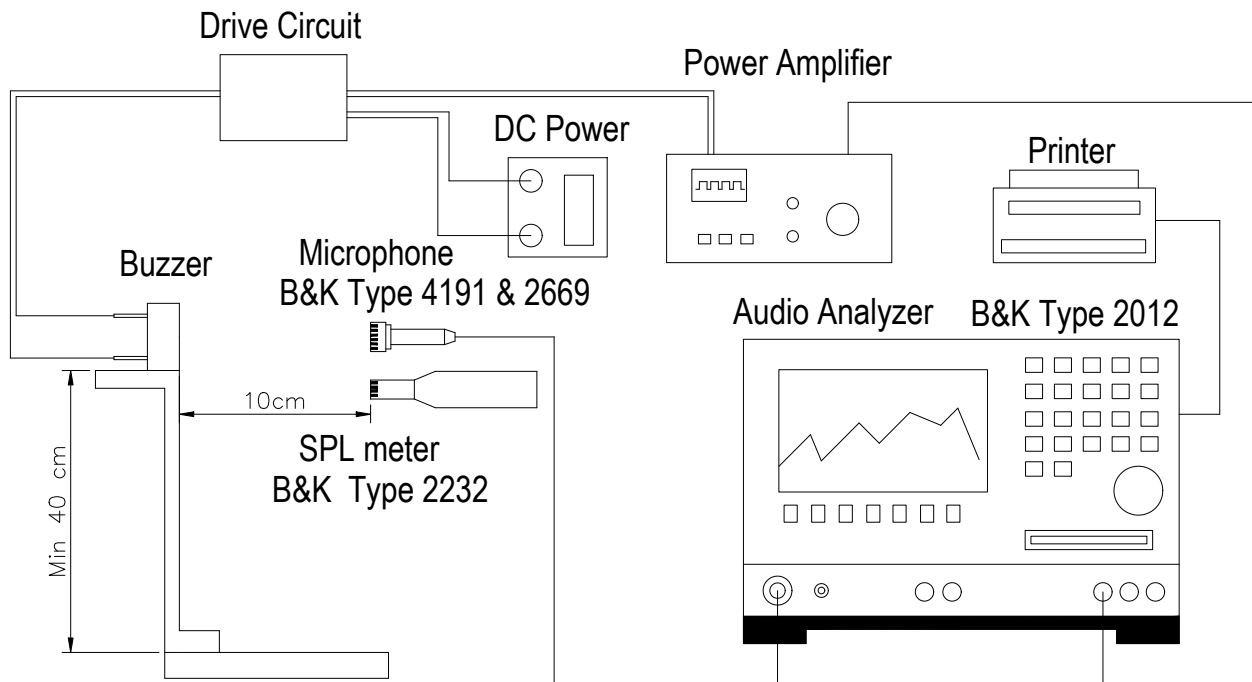
Relative humidity : 60% ~ 70%,

Atmospheric pressure : 860mbar to 1060mbar

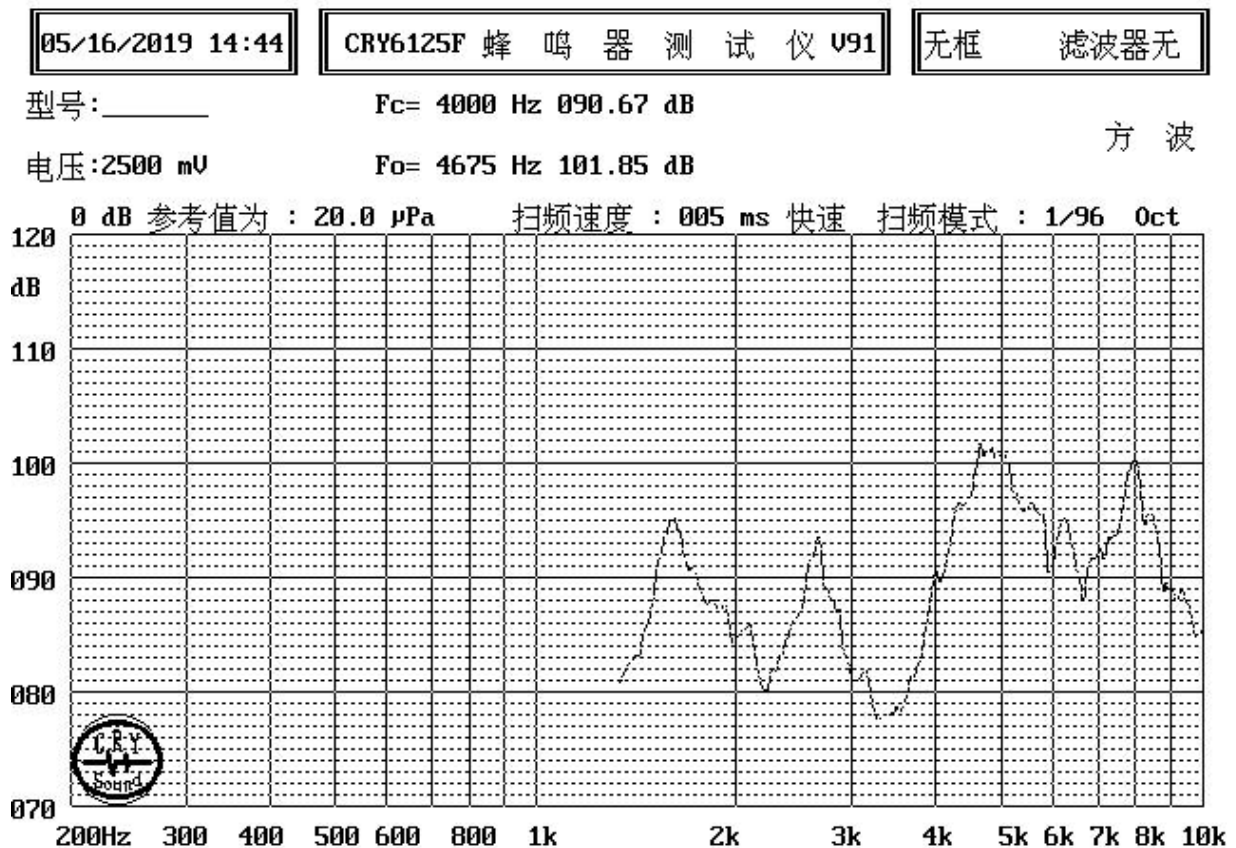
Standard Drive Circuit



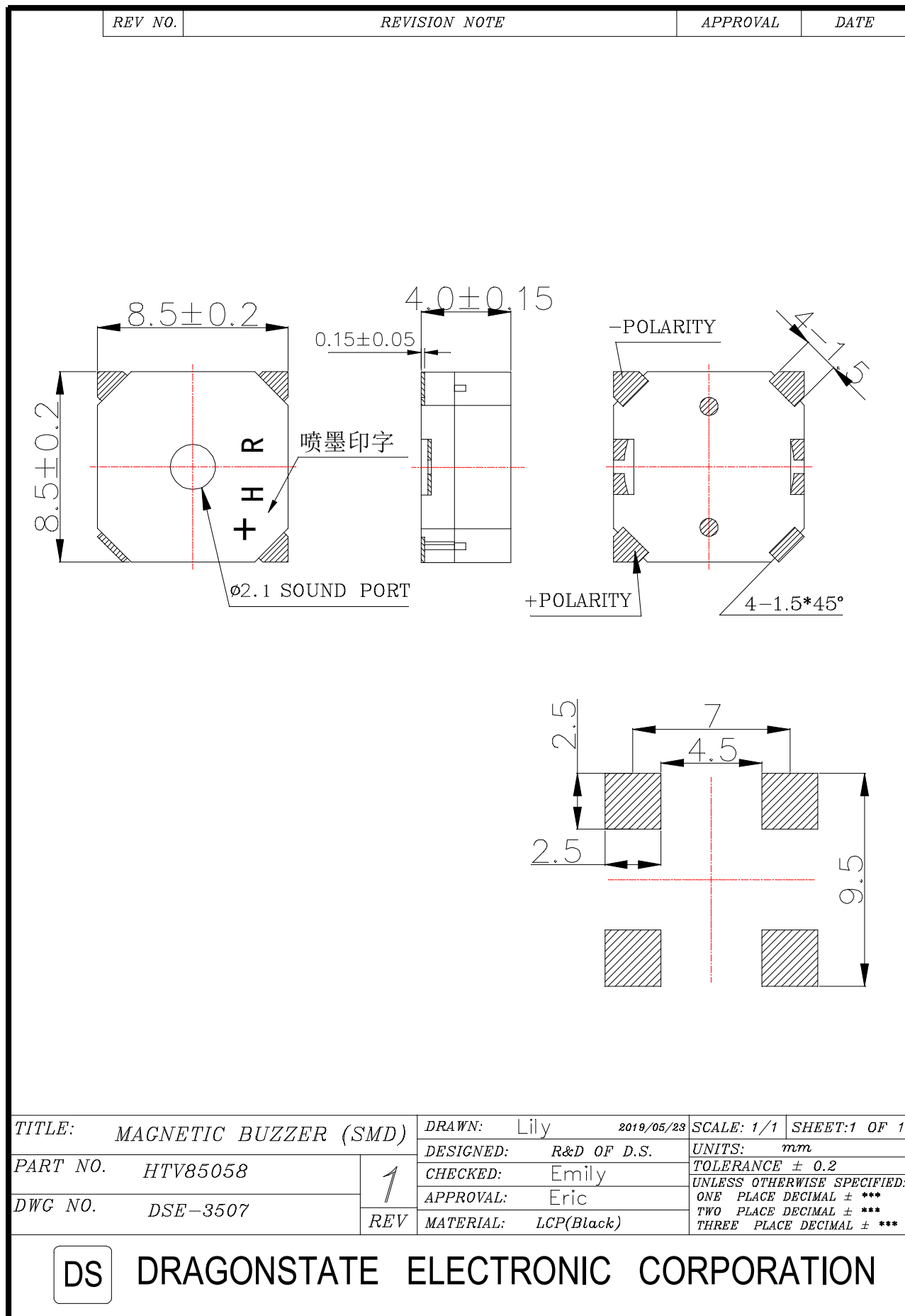
Standard Test Fixture



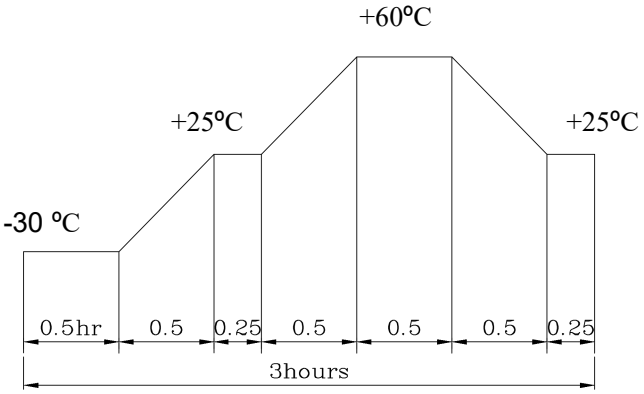
Frequency Response Curve



4.Dimension



5. RELIABILITY TEST

NO.	ITEM	TEST CONDITION AND REQUIREMENT
1	High Temperature Test (Storage)	After being placed in a chamber with $80\pm 2^{\circ}\text{C}$ for 96 hours and then being placed in normal condition for 2 hours. Allowable variation of SPL after test: $\pm 10\text{dB}$.
2	Low Temperature Test (Storage)	After being Placed in a chamber with $-30\pm 2^{\circ}\text{C}$ for 96 hours and then being placed in normal condition for 2 hours. Allowable variation of SPL after test: $\pm 10\text{dB}$.
3	Humidity Test	After being Placed in a chamber with 90-95% R.H. at $40\pm 2^{\circ}\text{C}$ for 96 hours and then being placed in normal condition for 2 hours. Allowable variation of SPL after test: $\pm 10\text{dB}$.
4	Temperature Cycle Test	<p>The part shall be subjected to 5 cycles. One cycle shall be consist of:</p>  <p>Allowable variation of SPL after test: $\pm 10\text{dB}$.</p>
5	Drop Test	Drop on a hard wood board of 4cm thick, any directions ,6 times, at the height of 75cm .Allowable variation of SPL after test: $\pm 10\text{dB}$.
6	Vibration Test	After being applied vibration of amplitude of 1.5mm with 10 to 55 Hz band of vibration frequency to each of 3 perpendicular directions for 2 hours .Allowable variation of SPL after test: $\pm 10\text{dB}$.
7	Solderability Test	Lead terminals are immersed in rosin for 5 seconds and then immersed in solder bath of $+300\pm 5^{\circ}\text{C}$ for 3 ± 1 seconds . 90% min. lead terminals shall be wet with solder (Except the edge of terminals).
8	Terminal Strength Pulling Test	The force of 9.8N(1.0kg) is applied to each terminal in axial direction for 10 seconds.No visible damage and cutting off.

TEST CONDITION.

Standard Test Condition :	a) Temperature : $+5 \sim +35^{\circ}\text{C}$	b) Humidity : 45-85%	c) Pressure : 860-1060mbar
一般测试条件 :	a) 温度 : $+5 \sim +35^{\circ}\text{C}$	b) 湿度 : 45-85%	c) 气压 : 860-1060mbar
Judgment Test Condition :	a) Temperature : $+25 \pm 2^{\circ}\text{C}$	b) Humidity : 60-70%	c) Pressure : 860-1060mbar
争议时测试条件 :	a) 温度 : $+25 \pm 2^{\circ}\text{C}$	b) 湿度 : 60-70%	c) 气压 : 860-1060mbar

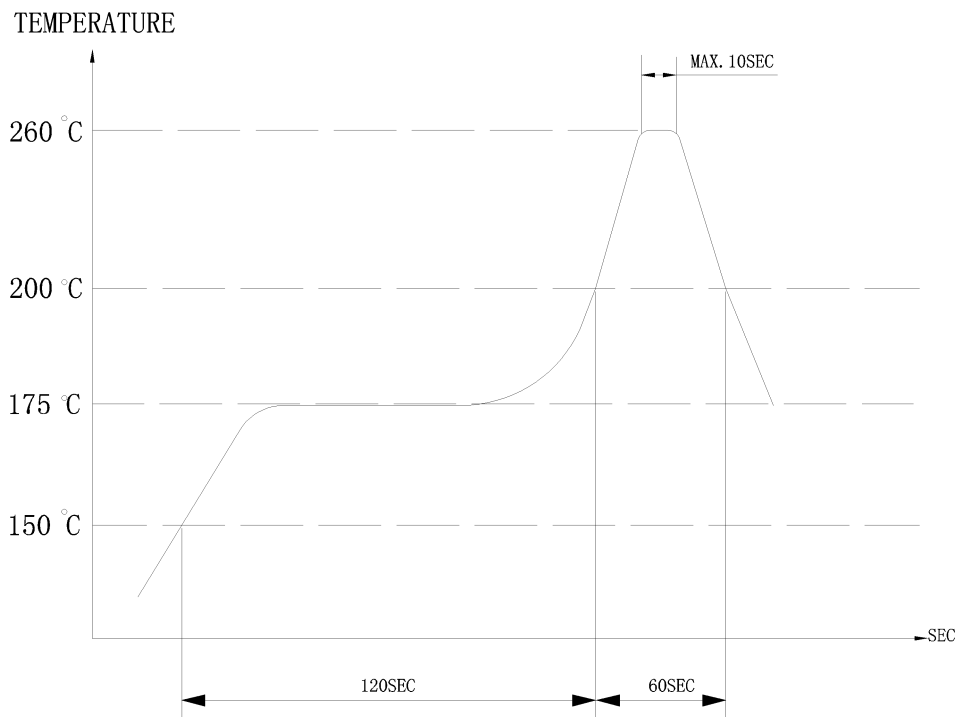
SOLDER ABILITY

(1) Recommendable reflow soldering condition is as following

(Allowed reflow process twice)

Maximum allowed temperature for reflow process is 265 °C/10 sec.

Note: It is requested that reflow soldering should be executed after heat of product goes down to normal.



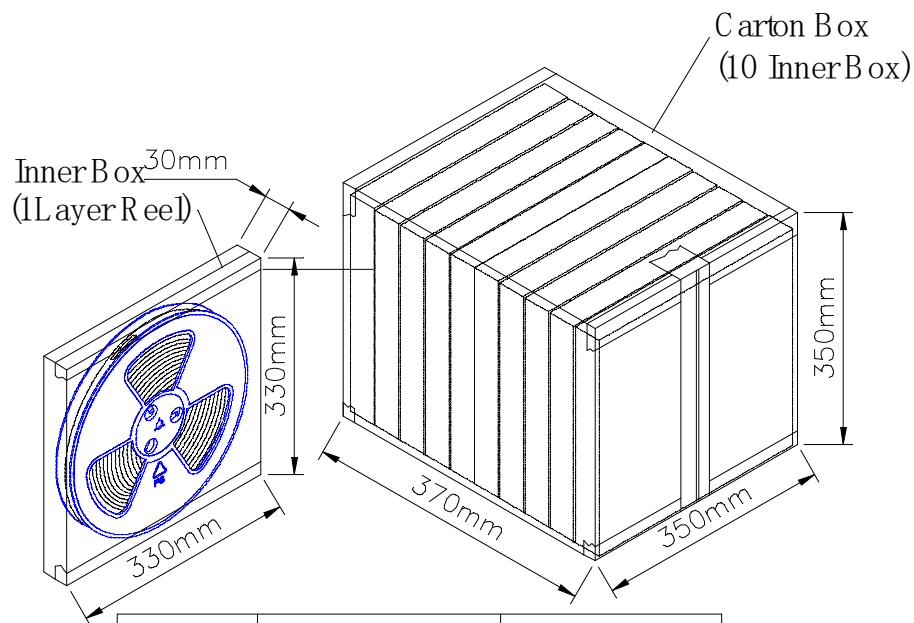
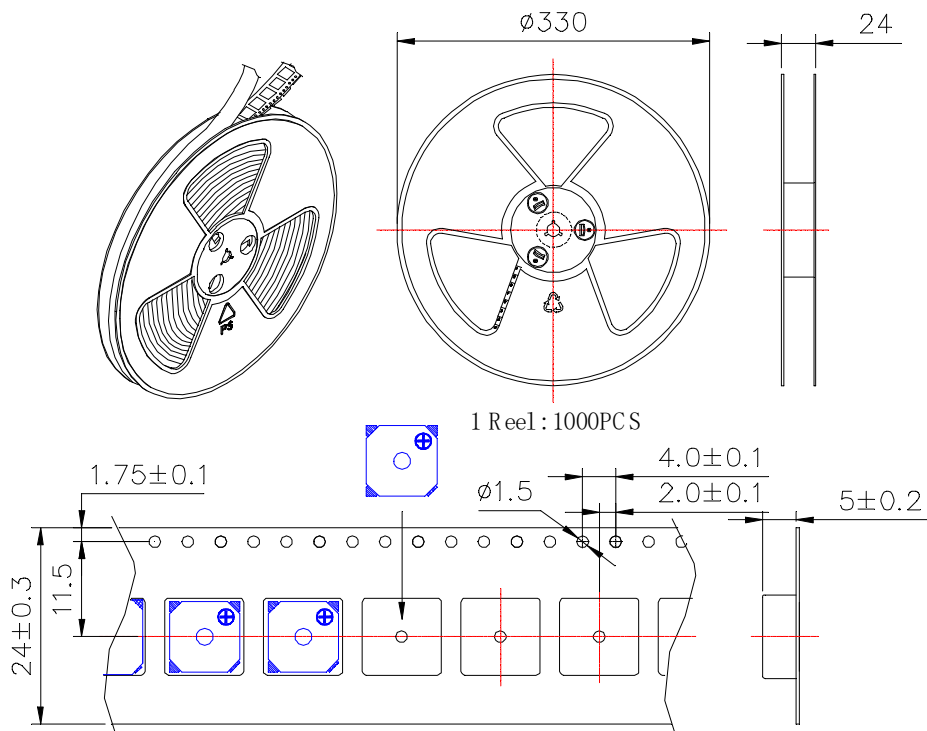
Heat resistant line

(Used when heat resistant reliability test is performed)

(2) Manual soldering

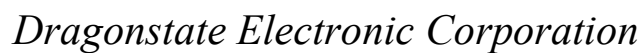
Manual soldering temperature 350 °C within 5 sec.

REV NO.	REVISION NOTE	APPROVAL	DATE
---------	---------------	----------	------



Inner Box	330mm x 330mm x 30mm	1x1000PCS=1000PCS
Carton Box	350mm x 355mm x 370mm	10x1000PCS=10,000PCS

TITLE: PACKING FORMATION	DRAWN: Lily	2014/01/03	SCALE: NONE	SHEET: 1 OF 1
PART NO. HTV85058	DESIGNED: R&D OF D.S.	CHECKED: Emily	UNITS: mm	TOLERANCE \pm ****
DWG NO.	APPROVAL: Eric	MATERIAL:	UNLESS OTHERWISE SPECIFIED:	ONE PLACE DECIMAL \pm ***
	REV 1			TWO PLACE DECIMAL \pm ***
				THREE PLACE DECIMAL \pm ***



6. History change record

[illegible]