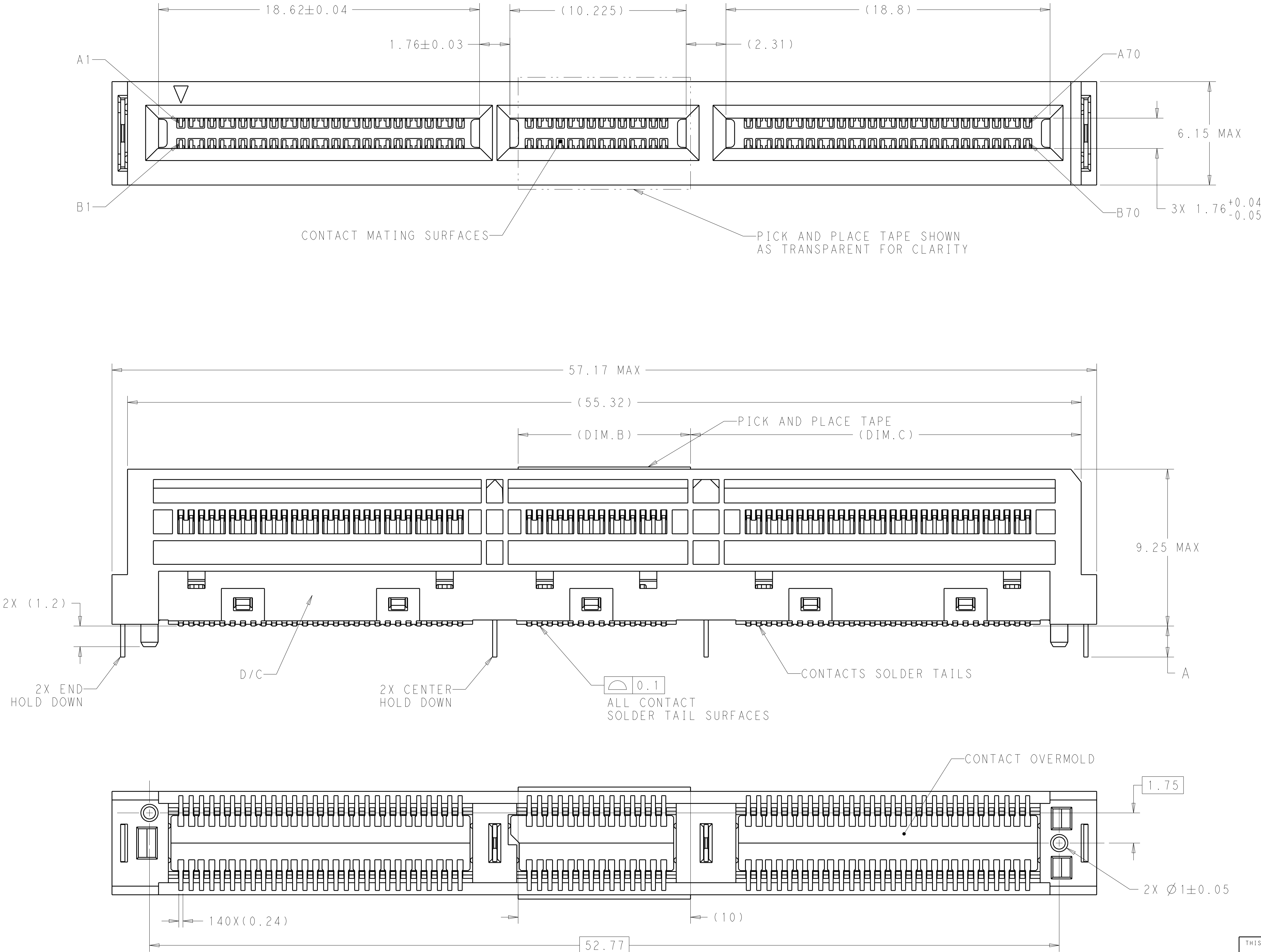
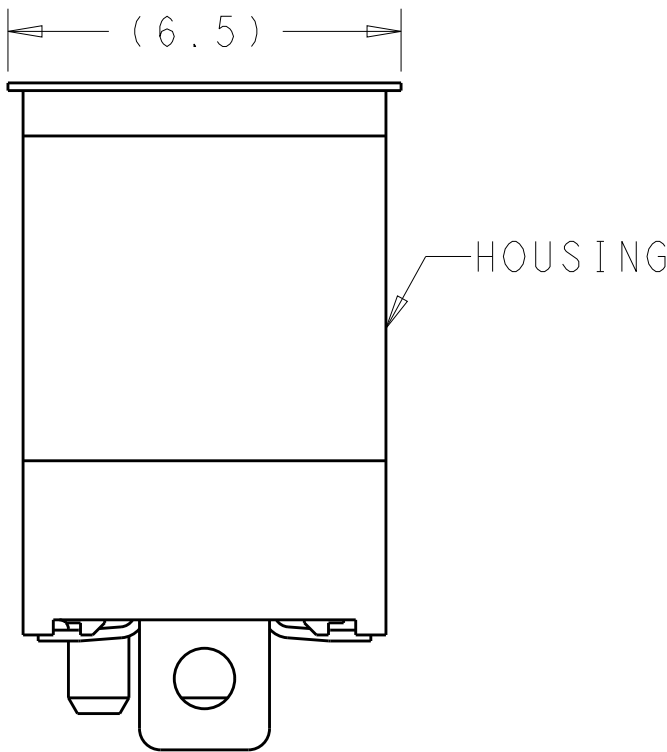


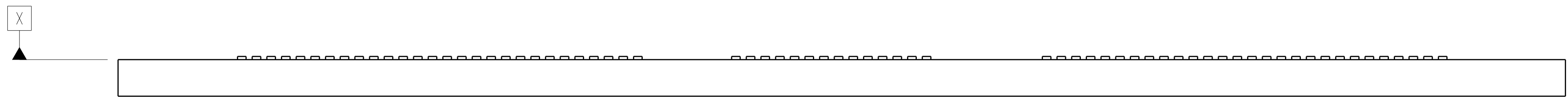
REVISIONS					
P	LTR	DESCRIPTION	DATE	DWN	APVD
	A	RELEASED	11MAY2019	CJV	JW
	B	REVISED PER ECO-19-011736	06AUG2019	AP	JW
	C	REVISED PER ECO-19-013357	29AUG2019	CJV	JW
	E	REVISED PER ECO-20-014352	12OCT2020	TX	DZ

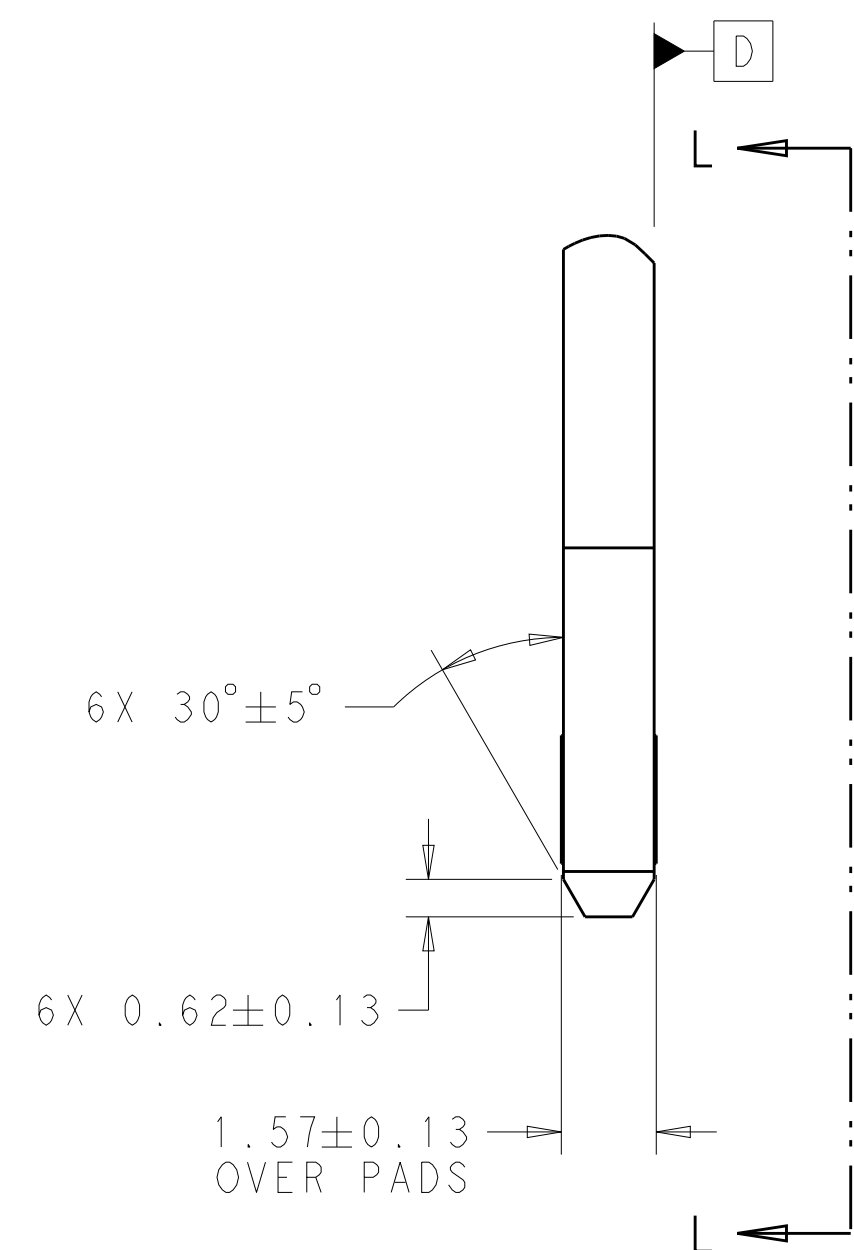
- 1 HOUSING AND CONTACT OVERMOLDS - LCP, UL94-V0. BLACK.  
CONTACTS AND HOLD DOWNS - COPPER ALLOY.  
PICK AND PLACE TAPE - POLYIMIDE FILM.
- 2 CONTACTS - GOLD PLATE ON MATING SURFACES,  
TIN PLATE ON SOLDER FEET.  
HOLD DOWNS - TIN PLATE.
- 3 DATUMS AND BASIC DIMENSIONS ESTABLISHED BY CUSTOMER.
4. MINIMUM HOST PCB THICKNESS: 1.5.
- 5 SEE MSA SPECIFICATION FOR ADDITIONAL PADDLE CARD LAYOUTS COMPATABLE WITH THIS RECEPTACLE AND FOR OPTIONAL SPLIT CONTACT PAD LAYOUTS FOR THE PADDLE CARD. SPECIFICATION PINOUT MAY ALSO DESIGNATE PAD SEQUENCE DIFFERENT FROM ILLUSTRATION.
- 6 POSITIONS DESIGNATED AS "SIGNAL" ARE REQUIRED LOCATIONS FOR HIGH SPEED DIFFERENTIAL PAIR SIGNALING. THESE LOCATIONS MAY ALSO BE USED FOR SUPPORTING SIDEBAND SIGNALS OR OTHER UTILITY PURPOSES. POSITIONS DESIGNATED AS "GROUND" ARE REQUIRED WHEN SUPPORTING HIGH SPEED DIFFERENTIAL SIGNALS. THESE LOCATIONS MAY ALSO BE USED FOR SIDEBAND SIGNALS OR OTHER UTILITY PURPOSES.
- 7 COMPONENT AND TRACE KEEP OUT AREA. EACH EDGE 0.15 MIN FROM EDGE OF HOLE.
- 8 TAPE AND REEL PACKAGED FOR PICK AND PLACE SMT PROCESSING, SEE FIGURE 1. POCKET TAPE WIDTH = 72.
- 9 MATES WITH BOARDS DESIGNED TO THE SFF-TA-1002 SPECIFICATION.



SEE SHEET 4  
FOR PART TABLE

THIS DRAWING IS A CONTROLLED DOCUMENT.		DWN C. VALENTINE 16JAN2018	TE Connectivity	
DIMENSIONS:		CHK D. HARMON 16JAN2018		
mm	TOLERANCES UNLESS OTHERWISE SPECIFIED:	APVD D. HARMON 16JAN2018	NAME RECEPTACLE ASSEMBLY, VERTICAL, 140 POSITION, SLIVER 2.0	
	0 PLC ±.25	PRODUCT SPEC	SIZE CAGE CODE DRAWING NO	
	1 PLC ±0.20	108-130021	A100779C=2327677	
	2 PLC ±.20	APPLICATION SPEC	RESTRICTED TO	
	3 PLC ±.	114-130008	-	
MATERIAL	FINISH	WEIGHT	CUSTOMER DRAWING	
1	2	-	SCALE 8:1 SHEET 1 OF 4 REV E	

4805 (3/13)



CONTACT POINT  
REFERENCE LINE

(2.58)

0.88±0.13  
LEVEL 1 SEQUENCE

(0.1)

140X 3±0.13

1.28±0.13  
LEVEL 2 SEQUENCE

SPLIT PADS OPTIONAL

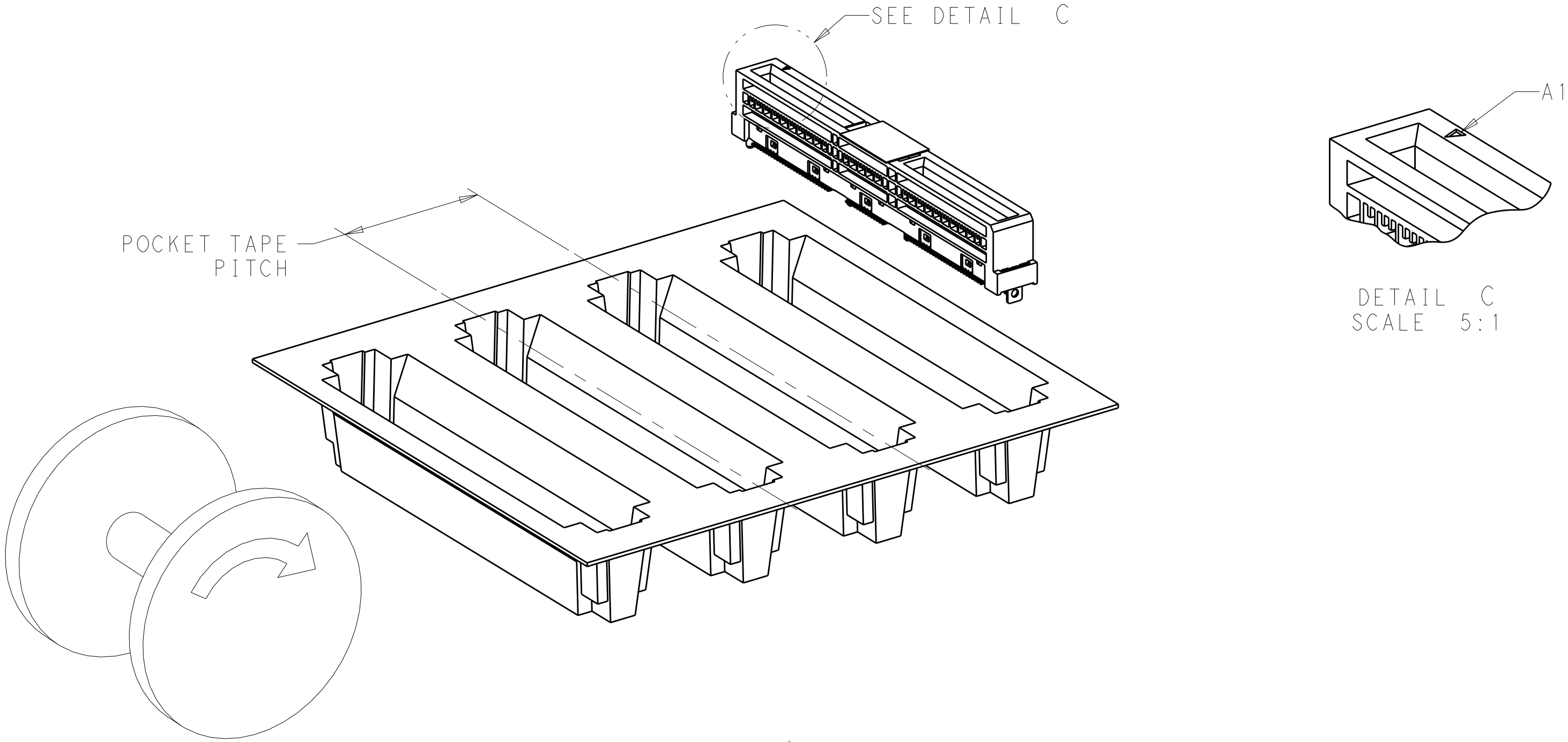
4805 (3/13)


REVISIONS					
P	LTR	DESCRIPTION	DATE	DWN	APVD
	-	SEE SHEET 1	-	-	-

TABLE 1: CONNECTOR CONTACT IDENTIFICATION  

CONTACT NUMBER	SIDE A	SIDE B
1	GROUND	GROUND
2	SIGNAL	SIGNAL
3	SIGNAL	SIGNAL
4	GROUND	GROUND
5	SIGNAL	SIGNAL
6	SIGNAL	SIGNAL
7	GROUND	GROUND
8	SIGNAL	SIGNAL
9	SIGNAL	SIGNAL
10	GROUND	GROUND
11	SIGNAL	SIGNAL
12	SIGNAL	SIGNAL
13	GROUND	GROUND
14	SIGNAL	SIGNAL
15	SIGNAL	SIGNAL
16	GROUND	GROUND
17	SIGNAL	SIGNAL
18	SIGNAL	SIGNAL
19	GROUND	GROUND
20	SIGNAL	SIGNAL
21	SIGNAL	SIGNAL
22	GROUND	GROUND
23	SIGNAL	SIGNAL
24	SIGNAL	SIGNAL
25	GROUND	GROUND
26	SIGNAL	SIGNAL
27	SIGNAL	SIGNAL
28	GROUND	GROUND
29	GROUND	GROUND
30	SIGNAL	SIGNAL
31	SIGNAL	SIGNAL
32	GROUND	GROUND
33	SIGNAL	SIGNAL
34	SIGNAL	SIGNAL
35	GROUND	GROUND

CONTACT NUMBER	SIDE A	SIDE B
36	SIGNAL	SIGNAL
37	SIGNAL	SIGNAL
38	GROUND	GROUND
39	SIGNAL	SIGNAL
40	SIGNAL	SIGNAL
41	GROUND	GROUND
42	GROUND	GROUND
43	GROUND	GROUND
44	SIGNAL	SIGNAL
45	SIGNAL	SIGNAL
46	GROUND	GROUND
47	SIGNAL	SIGNAL
48	SIGNAL	SIGNAL
49	GROUND	GROUND
50	SIGNAL	SIGNAL
51	SIGNAL	SIGNAL
52	GROUND	GROUND
53	SIGNAL	SIGNAL
54	SIGNAL	SIGNAL
55	GROUND	GROUND
56	SIGNAL	SIGNAL
57	SIGNAL	SIGNAL
58	GROUND	GROUND
59	SIGNAL	SIGNAL
60	SIGNAL	SIGNAL
61	GROUND	GROUND
62	SIGNAL	SIGNAL
63	SIGNAL	SIGNAL
64	GROUND	GROUND
65	SIGNAL	SIGNAL
66	SIGNAL	SIGNAL
67	GROUND	GROUND
68	SIGNAL	SIGNAL
69	SIGNAL	SIGNAL
70	GROUND	GROUND

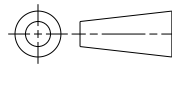


**FIGURE 1**   
DIRECTION OFF TOP OF REEL  
FOR USER UNREELING  
SHOWN AS 2327677-1 THRU 2-2327677-3  
SCALE 2:1

7.66	40	1.8±0.1	ALL	0.76µm Au	20	350	YES	200	5-2327677-3
22.66	10	3±0.1	ALL	0.76µm Au	20	250	YES	200	2-2327677-3
N/A	N/A	1.2±0.1	ENDS	0.76µm Au	24	250	NO	200	1-2327677-9
				0.38µm Au				100	1-2327677-8
				FLASH Au/PdNi				50	1-2327677-7
				0.76µm Au				200	1-2327677-6
N/A	N/A	1.8±0.1	ENDS	0.38µm Au	24	250	NO	100	1-2327677-5
				FLASH Au/PdNi				50	1-2327677-4
				0.76µm Au				200	1-2327677-3
N/A	N/A	1.8±0.1	ALL	0.38µm Au	24	250	NO	100	1-2327677-2
				FLASH Au/PdNi				50	1-2327677-1
				0.76µm Au				200	2327677-9
22.66	10	1.8±0.1	ENDS	0.38µm Au	20	350	YES	100	2327677-8
				FLASH Au/PdNi				50	2327677-7
				0.76µm Au				200	2327677-6
22.66	10	1.8±0.1	ENDS	0.38µm Au	20	350	YES	100	2327677-5
				FLASH Au/PdNi				50	2327677-4
				0.76µm Au				200	2327677-3
22.66	10	1.8±0.1	ALL	0.38µm Au	20	350	YES	100	2327677-2
				FLASH Au/PdNi				50	2327677-1
				0.76µm Au				200	2327677-9
DIM.C	DIM.B	A	HOLD DOWNS	PLATING	POCKET TAPE PITCH	REEL QUANTITY	PICK AND PLACE TAPE	MATING CYCLES	PART NUMBER

THIS DRAWING IS A CONTROLLED DOCUMENT.

DIMENSIONS:  
mm



MATERIAL

TOLERANCES UNLESS OTHERWISE SPECIFIED:

0 PLC ±  
1 PLC ±0.25  
2 PLC ±0.20  
3 PLC ±  
4 PLC ±  
ANGLES ±  
FINISH

THIS DRAWING IS A CONTROLLED DOCUMENT.

DWN C. VALENTINE 16JAN2018  
CHK D. HARMON 16JAN2018  
APVD D. HARMON 16JAN2018

PRODUCT SPEC  
108-130021  
APPLICATION SPEC  
114-130008

WEIGHT  
-

CUSTOMER DRAWING

NAME  
RECEPTACLE ASSEMBLY, VERTICAL,  
140 POSITION, SLIVER 2.0

SIZE CAGE CODE DRAWING NO  
A100779C=2327677

RESTRICTED TO  
-

SCALE 8:1 SHEET 4 OF 4 REV E

TE Connectivity