


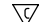
1234567

SIGN	DATE	DESCRIPTION	APPROVER
△	9/17'10	How to older is changed	Runner
△	05/27'11	Voltage rating is changed from 160 V to 300 V	Steven
△	05/27'11	Withstanding Voltage is changed from 132 Kv to 1.6 Kv	Steven
△	05/27'11	Add "cULus" Safety Approval logo	Steven
THIS IS CAD DRAWING, DO NOT REVISE MANUALLY!!!			

Material:

- Item ① Terminal housing: PA66 30% GF (UL94V-0)
- Item ② Contact pin of short: Copper Tin plated
- Item ③ Contact pin of long: Copper Tin plated

Electrical:

- Voltage rating: 300V
- Current rating: 5.5A
- Withstanding Voltage: 1.6 KV
- Operating temperature: -40°C to +115°C
- Soldering temperature: 250°C ±10°C/5 Sec
- Safety Approval: 
- Critical dimension: 

KE xx 3 3 x 1 xxxx G

No. OF POLES

- 04: 2×2 POLES
- 06: 2×3 POLES
- :
- 48: 2×24 POLES

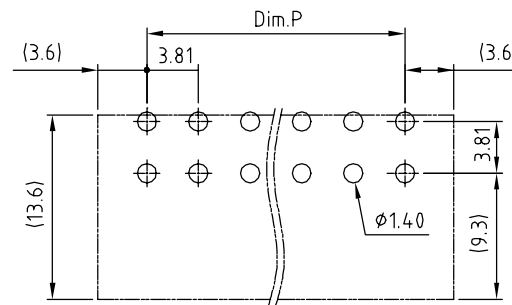
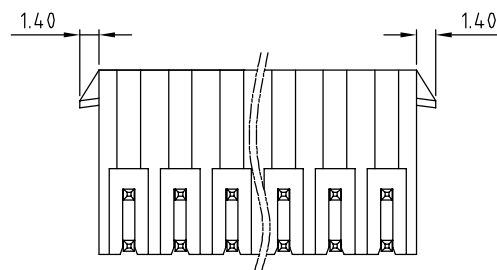
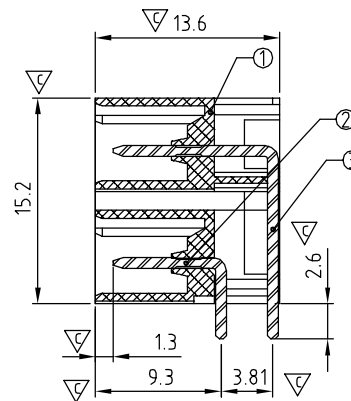
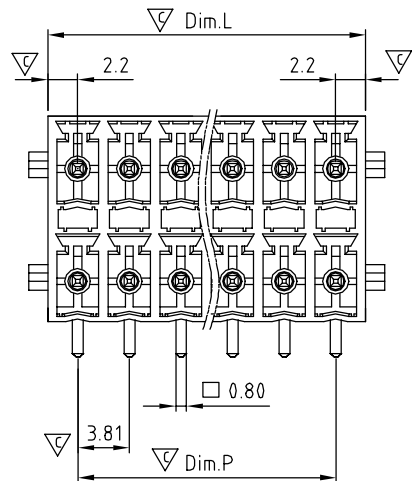
COLOR

- 0 Black (RAL9005)
- 2 Red (RAL3001/D)
- 3 Orange(RAL2011/P)
- 4 Yellow(RAL1018/A)
- 5 Green(RAL6018/T)
- 6 Blue (RAL5015/A)
- 8 Grey(RAL7035/D)

G: Pb<40000ppm

A00 0: "@" Mark
A00 A: "ANYTEK" Mark

Any special item by customer request, please contact sales department.



PCB Layout

DIMENSION

Dim.L	(N/2-1) × 3.81+4.4
Dim.P	(N/2-1) × 3.81


N = Number of poles

	TOL		
	2×2P-2×5P	2×6P-2×16P	2×17P-2×24P
Dim.L	±0.20	±0.30	±0.40
Dim.P	±0.15	±0.25	±0.30

ANYTEK

CUSTOMER COPY

ALL RIGHTS RESERVED. REPRODUCTION OR ISSUE TO THIRD PARTIES IN ANY FORM WHATEVER IS NOT PERMITTED WITHOUT WRITTEN AUTHORITY FROM THE PROPRIETOR. PROPERTY OF ANYTEK TECHNOLOGY CO., LTD

TITLE		KE 3.81mm With Latch holder Series (Right angle) DIP type				
PART NO.		KExx33x1xxxG		DWG NO.	8KE0308	
APPROVED	CHECKED	DESIGNED	DRAWN	CUST NO.	Tolerance	
		Steven 2011.05.27	Runner 2010.04.12		UNIT: mm	X. ±0.50
					SCALE: NONE	X.X ±0.30
					REV.: D	X.XX ±0.10
				SHEET: 01/01	X° ±1°	

1234567