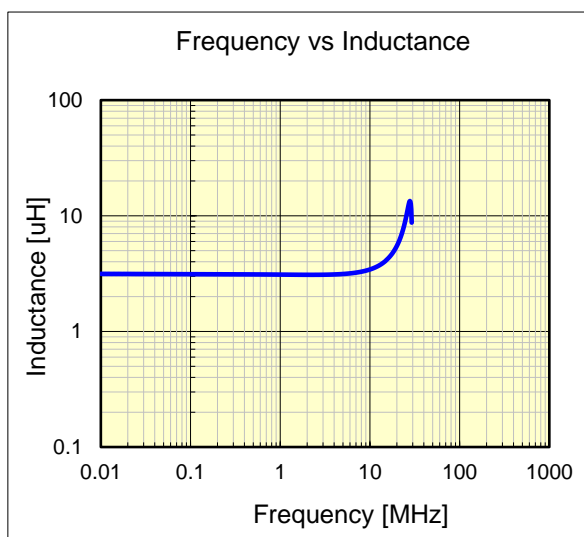
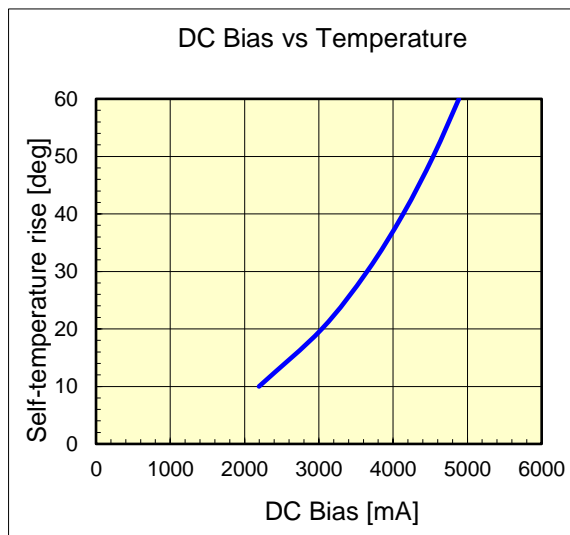
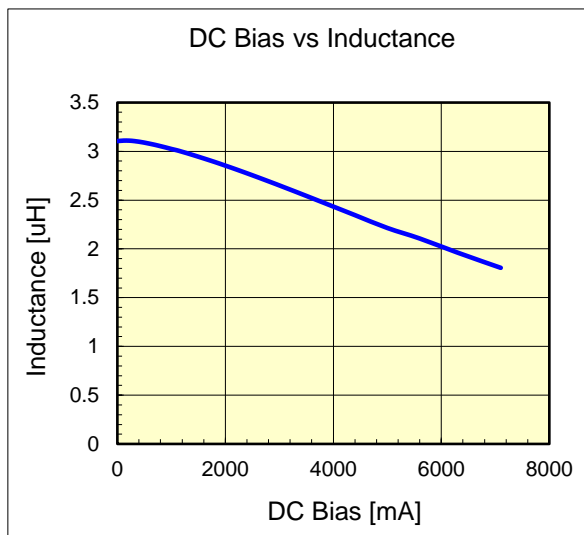
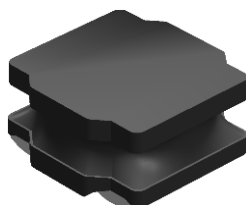


Wire Wound Inductor

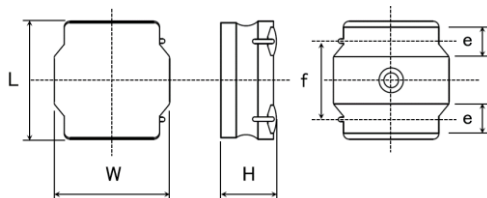
LLDPD4040WKT3R3MM



The data is reference only. Electrical characteristics vary depending on environment or measurement condition. TAIYO YUDEN reserves the right to make change to the data at any time without notice. Before making final selection, please check product specification.

Spec Sheet

Wire-wound Metal Power Inductors MCOIL™ LSDP series for General Electronic Equipment

LLDPD4040WKT1R5MM

■ Features

Item Summary

1.5uH $\pm 20\%$, 4.6A, 4.0x4.0x2.0mm
 Standard packing quantity(minimum)
 Taping Embossed 700pcs

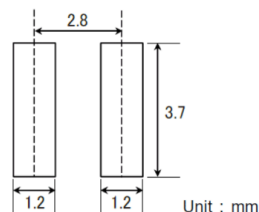
■ Products characteristics table

Inductance	1.5 uH $\pm 20\%$
Case Size(mm)	4.0x4.0
Rated Current(max)	4.6 A
Saturation Current(max)	6.2 A
Saturation Current(typ)	6.5 A
Temp. Rise Current(max)	4.6 A
Temp. Rise Current(typ)	5.6 A
DC Resistance(max)	31 m Ω
DC Resistance(typ)	27 m Ω
LQ Measuring Frequency	1MHz
Operating Temp. Range (Including-self-generated heat)	-40 to +125°C
Temperature characteristic (Inductance change)	$\pm 10\%$
RoHS Compliance(10 subst.)	Yes
REACH Compliance(223 subst.)	Yes
Halogen Free	Yes
Soldering	Reflow

■ External Dimensions

Dimension L	4.0 \pm 0.2 mm
Dimension W	4.0 \pm 0.2 mm
Dimension H	Max 2.0 mm
Dimension e	1.2 \pm 0.2mm
Dimension f	2.5 \pm 0.2mm

■ Recommended Land Patterns



【Recommended Land Pattern】

Surface Mounting

- Mounting and soldering conditions should be checked beforehand.
- Applicable soldering process to these products is reflow soldering only.

The data is reference only. Electrical characteristics vary depending on environment or measurement condition.
 TAIYO YUDEN reserves the right to make change to the data at any time without notice.
 Before making final selection, please check product specification.