

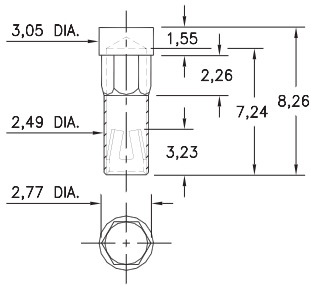
PIN RECEPTACLES

**FOR 1,22 - 1,63 DIAMETER PINS (#13 CONTACT)
FOR 1,14 - 1,65 DIAMETER PINS (#23 CONTACT)**

8365

8365-0-15-XX-13-XX-10-0

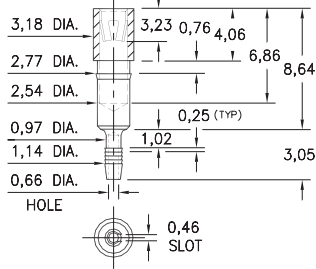
Hex press-fit in 2,69 plated through-hole



8996

8996-0-31-XX-13-XX-04-0

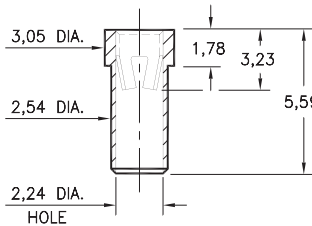
Compliant press-fit in 1,02 ±0,08 plated hole. For 1,52 → 2,54 thick board



9064

9064-0-15-XX-13-XX-10-0

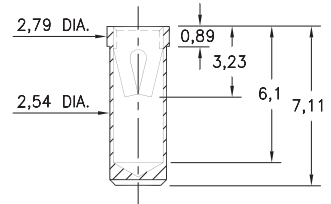
Solder mount in 2,59 min. mounting hole
Also available on 16mm wide carrier tape:
1,300 parts per 330mm reel
Order as: 9064-0-57-XX-13-XX-10-0



9280

9280-0-15-XX-13-XX-10-0

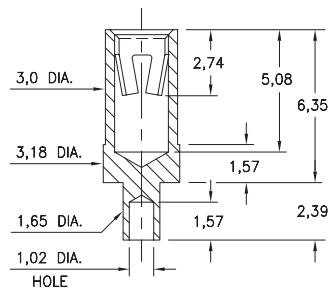
Solder mount in 2,59 min. mounting hole



4900

4900-0-19-XX-23-XX-10-0

Swage mount in 1,70 hole



SPECIFICATIONS:

Shell Material: Brass Alloy 360, 1/2 Hard

Contact Material: Beryllium Copper Alloy 172, HT

Dimensions: Millimeters

Tolerances On: Lengths: ± 0,13

Diameters: ± 0,051

Angles: ± 2°



ORDER CODE: XXXX - X - XX - XX - XX - XX - 0

BASIC PART #

SPECIFY SHELL FINISH:

- 01 5,08µm TIN/LEAD OVER NICKEL
- ◆ 80 5,08µm TIN OVER NICKEL (RoHS)
- ◆ 15 0,25µm GOLD OVER NICKEL (RoHS)

SPECIFY CONTACT FINISH:

- 01 5,08µm TIN/LEAD OVER NICKEL
- ◆ 80 5,08µm TIN OVER NICKEL (RoHS)
- ◆ 27 0,76µm GOLD OVER NICKEL (RoHS)

SELECT CONTACT:

#13 or #23 CONTACT (DATA ON PAGE 260)

(For alternate contact choices, see group G on page 248)

