



PRODUCT NUMBER
20020202-XXXXXXLF

20020202-

PITCH

C : 3.50 mm
D : 3.81 mm
G : 5.00 mm
H : 5.08 mm

POLES

02: 2 POLES
03: 3 POLES
04: 4 POLES
:
:
:
16: 16 POLES

A 0

LF : DENOTED ROHS COMPATIBLE

2 : TAPE & REEL PACKAGING

PROPERTY TABLE

| FCI SERIES NAME | 06-350 | 06-381 | 06-500 | 06-508 |
|---------------------------|--------------------|--------------------|--------------------|--------------------|
| PITCH (mm) | 3.50 | 3.81 | 5.00 | 5.08 |
| VOLTAGE RATING (VAC) | 300 | 300 | 300 | 300 |
| CURRENT RATING (A) | 10 | 10 | 12 | 12 |
| WITHSTANDING VOLTAGE (kV) | 1.6 | 1.6 | 1.6 | 1.6 |
| OPERATING TEMP. (°C) | -40~+65 | -40~+65 | -40~+65 | -40~+65 |
| SOLDERING TEMP. (°C) | 250±10 (5 sec.) | 250±10 (5 sec.) | 250±10 (5 sec.) | 250±10 (5 sec.) |
| POLES AVAILABLE | 02~16 | 02~16 | 02~12 | 02~12 |
| SAFETY CERTIFICATE | PENDING | | PENDING | |




HOUSING CODE

| CODE | COLOR | PROCESS |
|------|-----------------|-------------|
| 6 | BLACK(RAL 9005) | PIP(NOTE 6) |

NOTES:

1. MATERIAL:

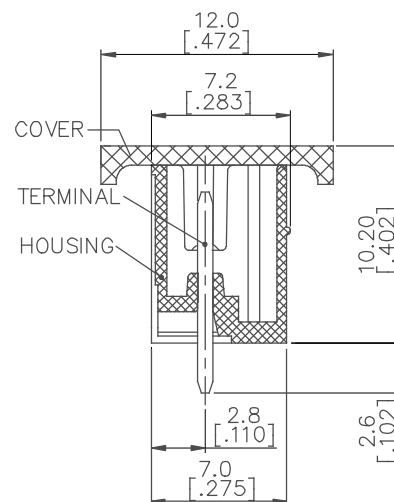
- 1-1. TERMINAL: COPPER, TIN PLATED.
- 1-2. HOUSING: THERMOPLASTIC RESIN, UL94V-0 RATED.
- 1-3. FLANGE NUT: STEEL, M2.5, ZINC PLATED.
- 1-4. COVER: THERMOPLASTIC RESIN, UL94V-0 RATED.
2. PRODUCT SPECIFICATION REFER TO FCI GS-12-625.
3. PRODUCT PACKING SPECIFICATION REFER TO FCI GS-14-1394.
4. FCI, SAFETY CERTIFICATE LOGO AND SERIES NAME TO BE SHOWN ON PRODUCT SURFACE.
5. THE PRODUCTS WHERE THE PART NUMBER END IN "LF" MEET THE EUROPEAN UNION DIRECTIVE AND OTHER COUNTRY REGULATIONS AS DESCRIBED IN GS-22-008.
6. THE HOUSING WILL WITHSTAND EXPOSURE TO 260°C PEAK TEMPERATURE FOR 5 SECONDS IN A CONVECTION, INFRA-RED OR VAPOR PHASE REFLOW OVEN.

| | | | | | | | | | | | | | |
|-------------|--------|----------------|--------|---------------------------------------|-------------|-------------------------|---|---|--|-------------------------------------|--|--------------|------|
| mat'l. code | | | | surface ASME Y14.5 ✓ | | tolerance ASME Y14.5 | | projection  | | product family TERMINAL BLOCK | | | |
| ltr | ecn no | dr | date | tolerances unless otherwise specified | | | | | | title | | | |
| A | | LS | 071912 | angles | | X.±0.5 | | MM  | | TERMINAL BLOCK | | | |
| | | | | | | X.X±0.3 | | | | PLUGGABLE, SOCKET, SIGNAL, STRAIGHT | | | |
| | | | | X'±1' | | X.XX±0.1 | | scale | | W/FLANGE(PIP) | | | |
| | | | | dr | LEIF SHEN | 041911 | |  | | dwg no | | sheet 1 of 5 | size |
| | | | | enr | LEIF SHEN | 041911 | | | | 20020202 | | A4 | |
| | | | | chr | LEIF SHEN | 041911 | | | | | | | |
| | | | | appd | JOSEPH HSIA | 041911 | | | | | | | |
| sheet index | | revision sheet | | A | A | A | A | A | | | | | |
| | | | | 1 | 2 | 3 | 4 | 5 | | | | | |


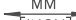

| 1 | 2 |
|---|---|
|---|---|



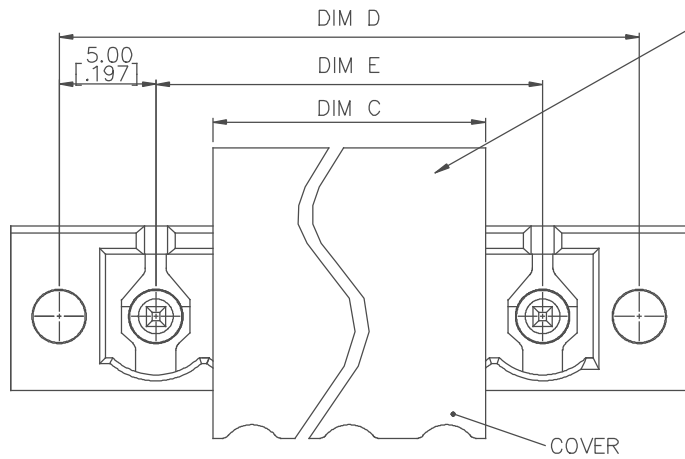
| POLES | TOLERANCE |
|---------|------------------|
| 2p-6p | $\pm 0.15[.006]$ |
| 7p-12p | $\pm 0.20[.008]$ |
| 13p-16p | $\pm 0.30[.012]$ |



form: A4mmXLc

| | | | | | | | | | | | | | | | | | | | | | | | |
|-------------|--|----------------|--|----|-------------------------|---------------------------------------|-------------------------|-------------|---|----------|----------------------------------|---|--|--|--|-------|--|--|-------------------|--|--|--|--|
| mat'l. code | | | | | surface ASME Y14.5 ✓ | | tolerance ASME Y14.5 | | projection  | | product family TERMINAL BLOCK | | | | | | | | | | | | |
| litr | | ecn no | | dr | date | tolerances unless otherwise specified | | | | | | | | | | title | | | | | | | |
| A | | | | | | angles | | linear | | X.±0.5 | | MM [INCH]  | | TERMINAL BLOCK PLUGGABLE, SOCKET, SIGNAL, STRAIGHT T W/FLANGE(PIP) | | | | | | | | | |
| | | | | | | | | | | X.X±0.3 | | | | | | | | | | | | | |
| | | | | | | X'±1' | | | | X.XX±0.1 | | scale | | | | | | | | | | | |
| | | | | | | dr | | LEIF SHEN | | 041911 | |  | | dwg no | | | | | sheet 3 of 5 size | | | | |
| | | | | | | enrg | | LEIF SHEN | | 041911 | | | | 20020202 | | | | | A4 | | | | |
| | | | | | | chr | | LEIF SHEN | | 041911 | | | | | | | | | | | | | |
| | | | | | | appd | | JOSEPH HSIA | | 041911 | | | | | | | | | | | | | |
| sheet index | | revision sheet | | | | | | | | | | | | | | | | | | | | | |

| PRODUCT NUMBER | SERIES NAME | PITCH |
|------------------|-------------|---------|
| 20020202-GXXXXXL | 06-500 | 5.00 mm |



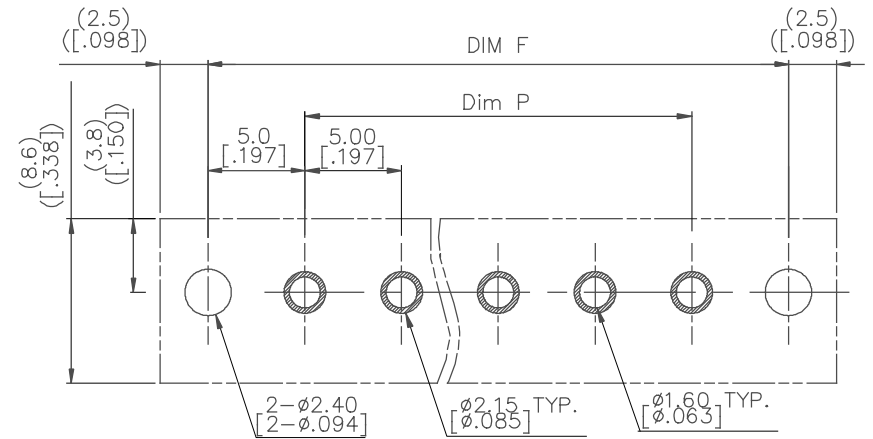
3P Cover for odd poles
2p Cover for even poles

| Poles | DIM C |
|-------|--------------|
| 2P | 9.04 [.356] |
| 3P | 14.08 [.554] |

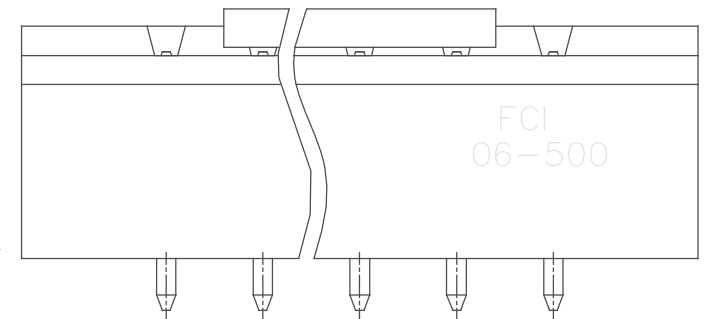
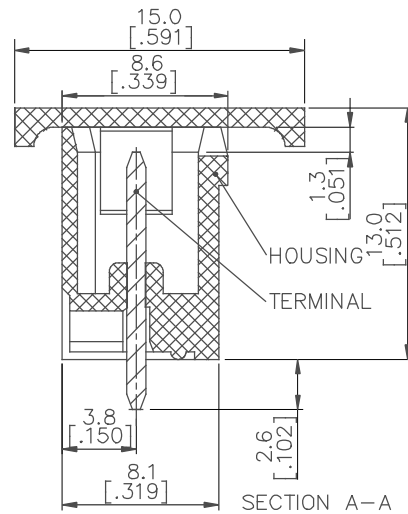
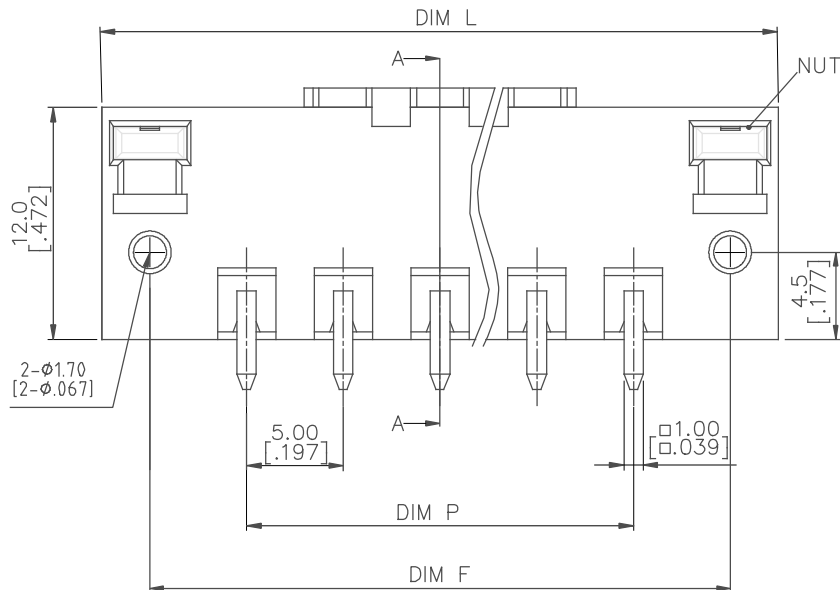
N= NUMBER OF POLES

| DIM L | (N+2)*5.0 [.197] |
|-------|------------------|
| DIM P | (N-1)*5.0 [.197] |
| DIM D | (N+1)*5.0 [.197] |
| DIM E | (N-1)*5.0 [.197] |
| DIM F | (N+1)*5.0 [.197] |

| POLES | TOLERANCE |
|-------|--------------|
| 2-3p | ±0.15 [.006] |
| 4-8p | ±0.20 [.008] |
| 9-12p | ±0.25 [.010] |

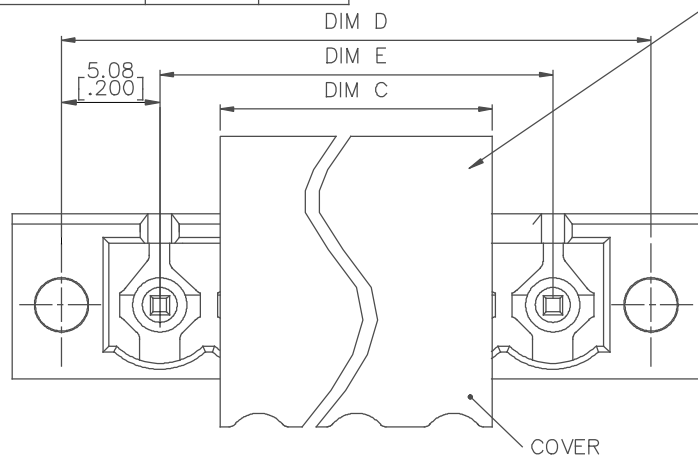


RECOMMENDED PCB LAYOUT



| | | | | |
|-------------|-----------------------|-------------------------|--------------------------|---|
| mat'l. code | surface ASME Y14.5 | tolerance ASME Y14.5 | projection MM INCH | product family TERMINAL BLOCK |
| ltr | ecn no | dr | date | title TERMINAL BLOCK PLUGGABLE, SOCKET, SIGNAL, STRAIGHT W/FLANGE(PIP) |
| A | | | | dwg no 20020202 |
| | | | | sheet 4 of 5 |
| | | | | size A4 |
| | | | | type CUSTOMER Drawing |

| PRODUCT NUMBER | SERIES NAME | PITCH |
|------------------|-------------|---------|
| 20020202-HXXXXXL | 06-508 | 5.08 mm |



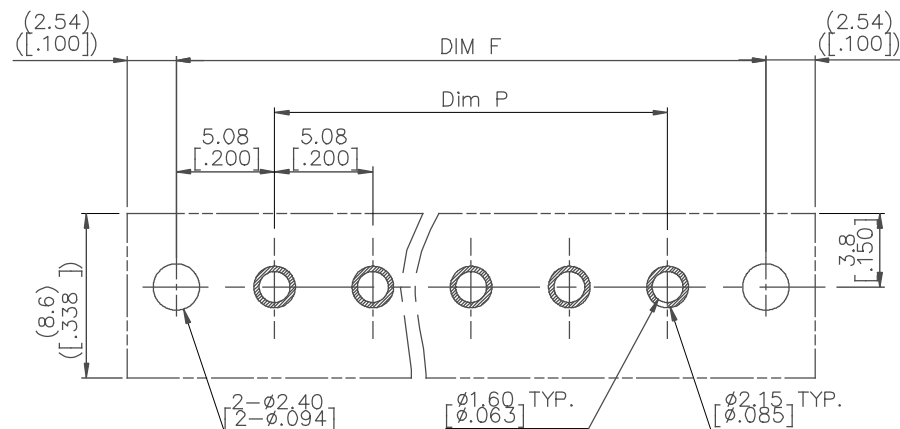
3P Cover for odd poles
2P Cover for even poles

| Poles | DIM C |
|-------|-------------|
| 2P | 9.04[.356] |
| 3P | 14.08[.554] |

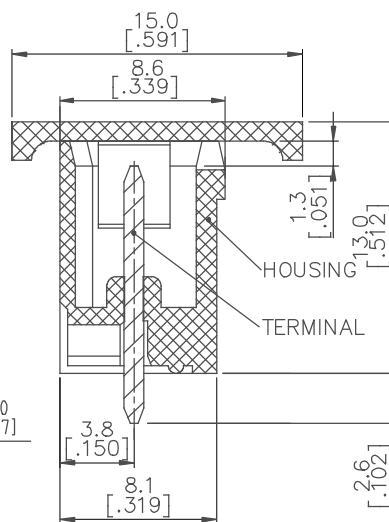
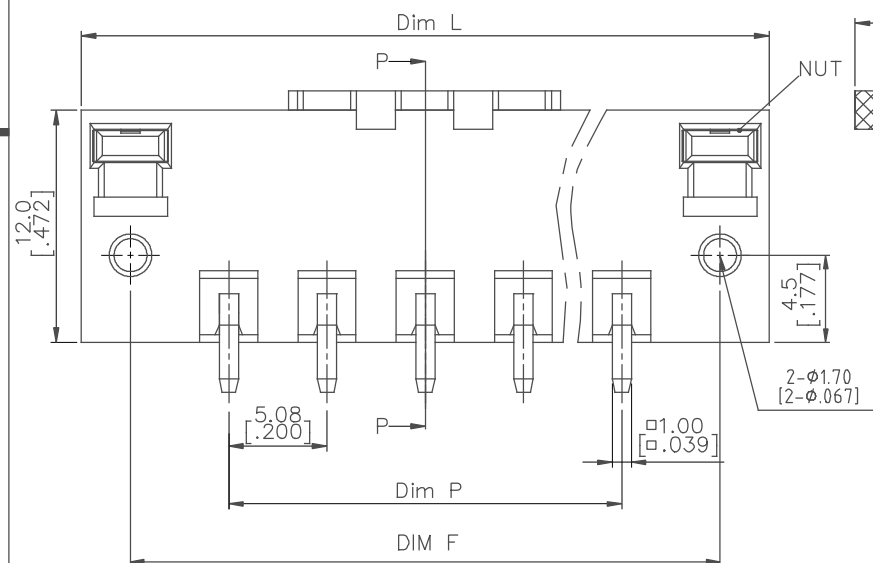
N= NUMBER OF POLES

| DIM L | (N+2)*5.08[.200] |
|-------|------------------|
| DIM P | (N-1)*5.08[.200] |
| DIM D | (N+1)*5.08[.200] |
| DIM E | (N-1)*5.08[.200] |
| DIM F | (N+1)*5.08[.200] |

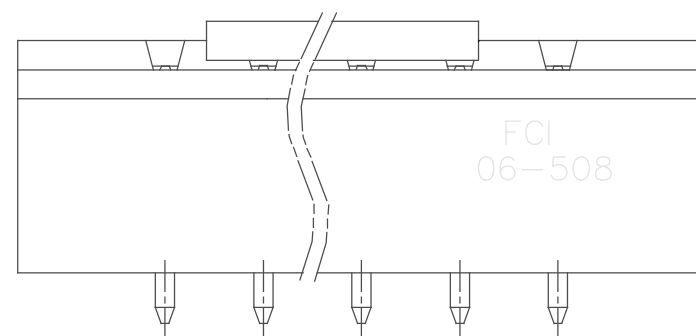
| POLES | TOLERANCE |
|-------|-------------|
| 2-3p | ±0.15[.006] |
| 4-8p | ±0.20[.008] |
| 9-12p | ±0.25[.010] |



RECOMMENDED PCB LAYOUT



SECTION P-P



| | | | | |
|-------------|-----------------------|-------------------------|----------------|---|
| mat'l. code | surface ASME Y14.5 | tolerance ASME Y14.5 | projection | product family TERMINAL BLOCK |
| ltr | ecn no | dr | date | title TERMINAL BLOCK PLUGGABLE, SOCKET, SIGNAL, STRAIGHT W/FLANGE(PIP) |
| A | | | | dwg no 20020202 |
| | | | | sheet 5 of 5 |
| | | | | size A4 |
| | | | | type CUSTOMER Drawing |
| sheet index | revision sheet | | | |