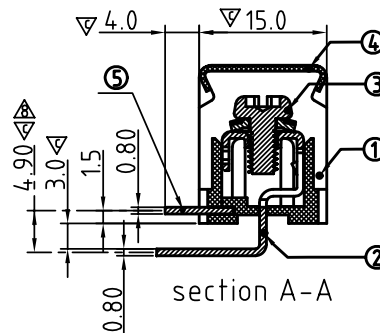
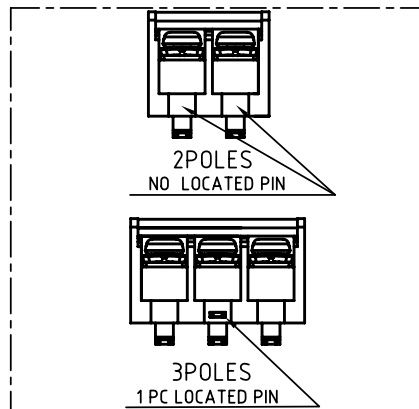


PCB Layout



# MATERIALS ELECTRICAL

△ RATED VOLTAGE & CURRENT:	300 V, 30 A
WITHSTAND VOLTAGE:	AC 2000 V/Min
INSULATION RESISTANCE:	1000 MΩ OR MORE AT DC 500 V
△ OPERATING TEMPERATURE RANG:	-40 °C ~ +115 °C
△ SCREW TORQUE VALUE:	8 kgf.cm
△ WIRE RANGE:	22 - 10AWG
1) MOLDED PARTS:	Thermoplastic, UL 94 V-0 BLACK
2) TERMINAL:	BRASS, 0.8t, Tin PLATED
△ 3) TERMINAL SCREWS:	STEEL, M3.5
△ 4) COVER MATERIAL:	PC
5) LOCATED PIN :	BRASS, 0.8t, Tin PLATED

△ APPROVAL: Critical dimension: ▽

YK 50A xx 2 x x 00G

NO. OF POLES  
02: 2 POLES  
03: 3 POLES  
04: 4 POLES  
⋮  
18: 18 POLES

MARK  
0: "@" MARK  
1: "ANY" MARK

TERMINAL & SCREW PLATED  
0: TERMINAL & SCREW: G/F  
△ 1: TERMINAL: G/F, SCREW: Zinc  
2: TERMINAL: Sn, SCREW: G/F  
△ 3: TERMINAL: Sn, SCREW: Zinc

G:RoHS compliant(lead<4%)  
in copper alloy


N=Number of poles
Dim.A= NX9.5+2.5
Dim.B= (N-1)X9.5

POLE	2-6	7-12	13-18
Dim.A	+/-0.20	+/-0.25	+/-0.30
Dim.B	+/-0.10	+/-0.15	+/-0.20

# ANYTEK

## CUSTOMER COPY

ALL RIGHTS RESERVED. REPRODUCTION OR ISSUE TO THIRD PARTIES IN ANY FORM WHATEVER IS NOT PERMITTED WITHOUT WRITTEN AUTHORITY FROM THE PROPRIETOR. PROPERTY OF ANYTEK TECHNOLOGY CO., LTD

TITLE	YK50A with cover Series						
PART NO.	YK50Axx2xx00G			DWG NO.	8YK0001-50A		
APPROVED	CHECKED	DESIGNED	DRAWN	CUST NO.			Tolerance
		Jacky 2012.10.27	Jacky 2012.10.27		UNIT: mm		X. ±0.50
					SCALE: NONE		X.X ±0.30
					REV: D		X.XX ±0.10
					SHEET: 01/01		X° ±1°