

6

5

4

3

2

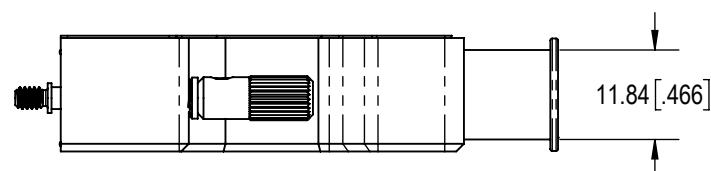
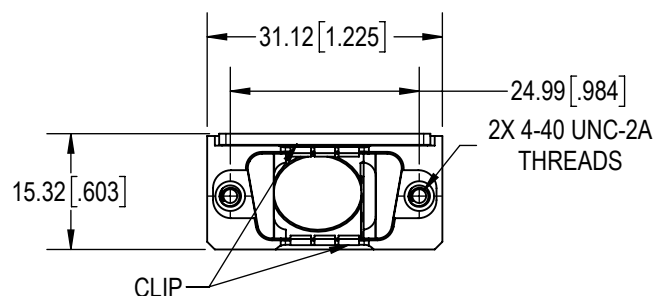
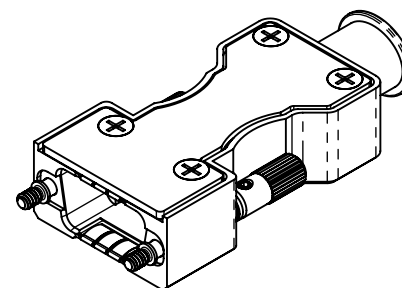
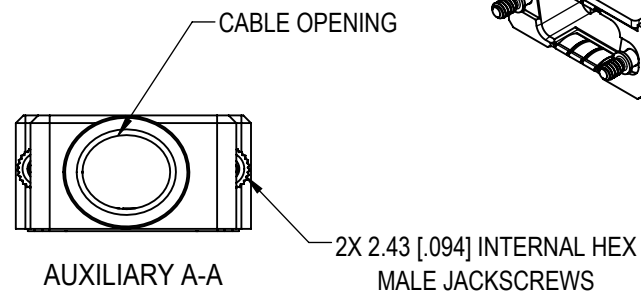
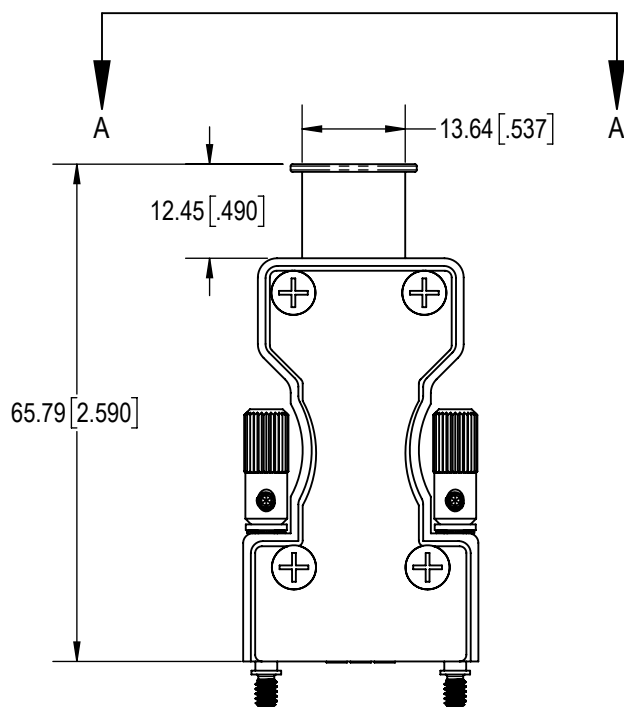
1

D

C

B

A

**NOTES:**

## 1. MATERIAL AND FINISHES:

BACKSHELL AND BACKSHELL COVER: PRECISION MACHINED ALUMINUM, ELECTROLESS NICKEL PLATE.

BACKSHELL COVER GASKET: SILICONE NICKEL GRAPHITE.

JACKSCREWS, WASHERS AND WAVE WASHERS: STAINLESS STEEL, PASSIVATED.

EMI CLIP: BERYLLIUM COPPER.

KNOBS, SET SCREWS, BACKSHELL COVER SCREWS, GROUNDING SCREWS: STAINLESS STEEL, PASSIVATED.

2. DETAILED PRODUCT, MECHANICAL AND ELECTRICAL INFORMATION IS AVAILABLE IN THE LATEST STANDARD DENSITY MACH-D PRODUCT PUBLICATION AT [CONNECTPOSITRONIC.COM](http://CONNECTPOSITRONIC.COM)

## 3. PRODUCT IS COMPLIANT TO THE CURRENT RoHS DIRECTIVE.

BY ND	CHK AB	3RD ANGLE 	POSITRONIC BELIEVES THE DATA ON THE DRAWING TO BE RELIABLE. THE USER EMPLOYS SUCH INFORMATION AT HIS OWN DISCRETION AND RISK. POSITRONIC ASSUMES NO RESPONSIBILITY FOR RESULTS OBTAINED OR DAMAGES INCURRED FROM USE OF SUCH INFORMATION IN WHOLE OR IN PART.	
APR PA	RELEASED DATE: 2022-03-15	SCALE NTS		
TOLERANCES ±0.03mm [.001 INCHES] FOR MALE CONTACT MATING DIAMETERS ±0.08mm [.003 INCHES] FOR CONTACT TERMINATION DIAMETERS ±0.13mm [.005 INCHES] FOR ALL OTHER DIAMETERS ±0.38mm [.015 INCHES] FOR ALL OTHER DIMENSIONS ±5° FOR ALL ANGLES DIMENSION ARE IN MILLIMETERS [INCHES]			PART NUMBER MCD9000ENE50/AA	SERIES
			TITLE MCD9000ENE50/AA	
CREATED ON: 03-03-22			SHEET SHEET 1 OF 1	REV A

6

5

4

3

2

1

D

C

B

A