

**EM2221 Series****EuroMag Terminal Blocks**

Closed Header; (Mates with EM3533 Series);  
3.50 Centers

**SPECIFICATIONS**

**Rating:** 10A, 300V

**Center Spacing:** 0.138" (3.50mm)

**Housing Material:** UL rated 94V0 Thermoplastic

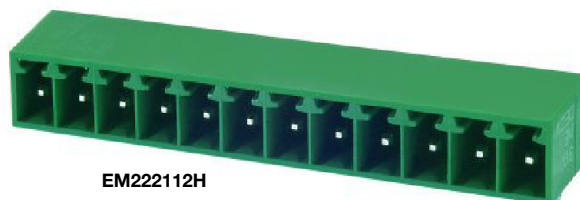
**Contact Material:** Brass Tin-Plated

**Operating Temperature:** 105°C (221°F) max., -40°C (-40°F) min.

**Recommended PCB Hole Diameters:** 0.055" (1.40mm)

**Construction:** Mold-to-Length

**Agency Information:**  File E62622; CE Certified



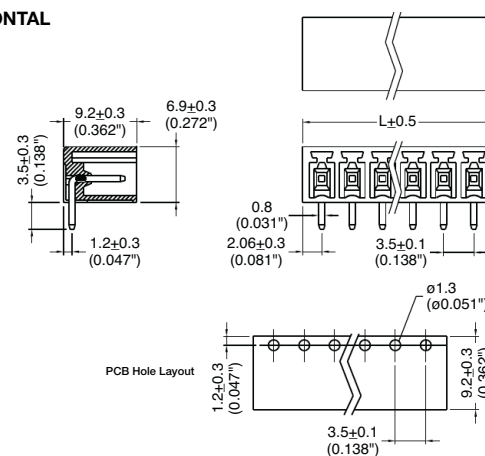
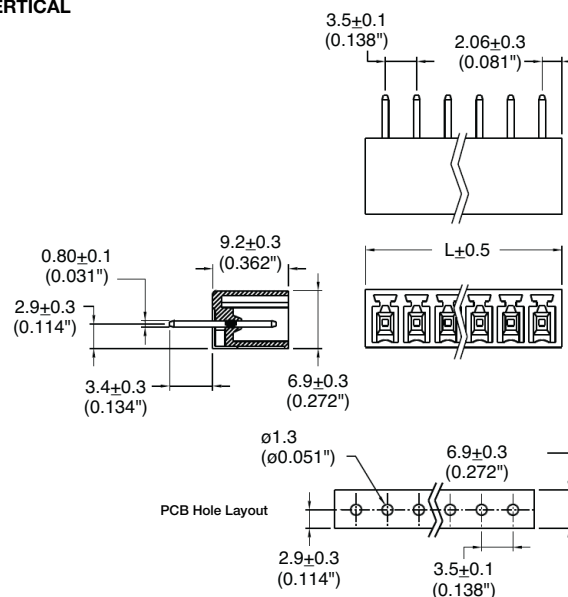
EM222112H



EM222108V

Poles	L (mm)
2	7.6
3	11.1
4	14.6
5	18.1
6	21.6
7	25.1
8	28.6
9	32.1
10	35.6
11	39.1
12	42.6
13	42.1
14	49.6

To convert to inches, divide by 25.4

**Dimensions - mm (in)****HORIZONTAL****VERTICAL****Part Numbering System****Series****EM2221****# of Poles****02 to 14****Orientation****H** - horizontal  
**V** - vertical

**Mating Plug:** EM3533 pg. 74

Terminal Blocks:  
Single RowEuroMag Series  
Plug & HeaderEdge Connectors,  
One-Sided BoardsCompliance  
References