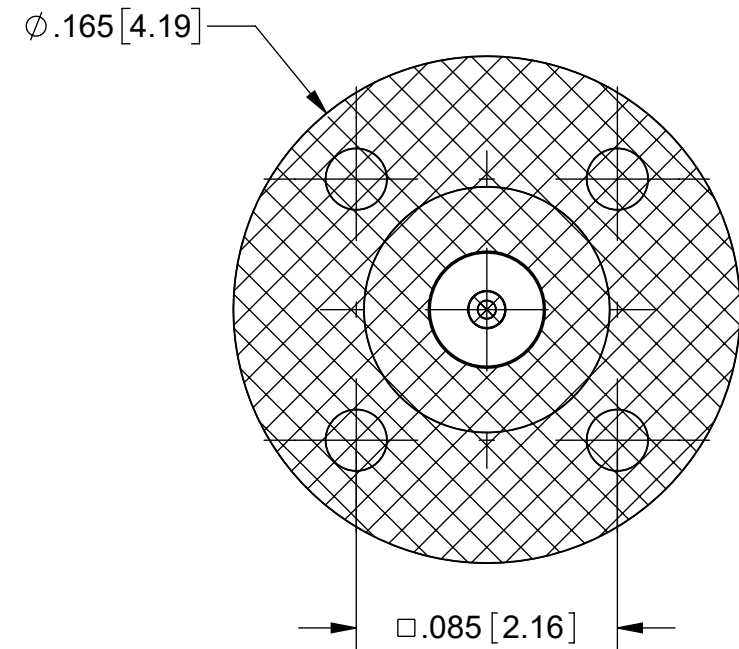




REVISION HISTORY			
REV	DESCRIPTION	DATE	APPROVED
-	NRN 46380	11/21	SEE PDM



1. DIMENSIONS APPLY PRIOR TO PRE-TINNING.
2. Sn63 SOLDER REQUIRED IN HATCHED AREA.
3. SOLDER PERMISSIBLE ON ALL EXTERNAL SURFACES.
4. FOR RECOMMENDED FOOTPRINT TO YOUR SPECIFIC PCB, CONTACT SV MICROWAVE SALES DEPARTMENT (sales@svmicro.com, 561-840-1800).

PART NUMBER	INTERFACE
3211-40142	SMOOTH BORE
3211-40143	FULL DETENT

MATERIAL:	SEE NOTES	DIMENSIONS ARE IN INCHES TOLERANCES:	UNLESS OTHERWISE SPECIFIED		<div><div>Amphenol www.svmicrowave.com</div></div>		
FINISH:	SEE NOTES	FRACTIONAL: ±1/64 ANGULAR: X° ±1°0' X'X" ±15'	1) ALL DIMENSIONS ARE IN INCHES [MILLIMETERS] 2) ALL DIMENSIONS ARE AFTER PLATING. 3) BREAK CORNERS & EDGES .005 R. MAX. 4) CHAM. 1ST & LAST THREADS. 5) SURFACE ROUGHNESS 63-MIL-STD-10. 6) DIA. 'S ON COMMON CENTERS TO BE CONCENTRIC WITHIN .005 T.I.R. 7) REMOVE ALL BURRS		TITLE:		
SURFACE AREA:	N/A	DECIMAL: .X ±.030 .XX ±.010 .XXX ±.005			TIN DIPPED SMPM MALE STRAIGHT PCB MOUNT		
PROPRIETARY THE INFORMATION CONTAINED IN THIS DRAWING IS THE SOLE PROPERTY OF SV MICROWAVE, INC. ANY REPRODUCTION IN PART OR AS A WHOLE WITHOUT THE WRITTEN PERMISSION OF SV MICROWAVE, INC IS PROHIBITED.	INTERPRET DIMENSIONS AND TOLERANCES PER ASME Y14.5M - 1994		DRAWN:		JLP 11/05/21		
	THIRD ANGLE PROJECTION		CHECKED:		SEE PDM		
	<div></div>		APPROVED:		SEE PDM		
					SIZE	DWG. NO.	
					B	3211-40142-40143	
					SCALE: 16:1		
					SHEET 1 OF 1		