

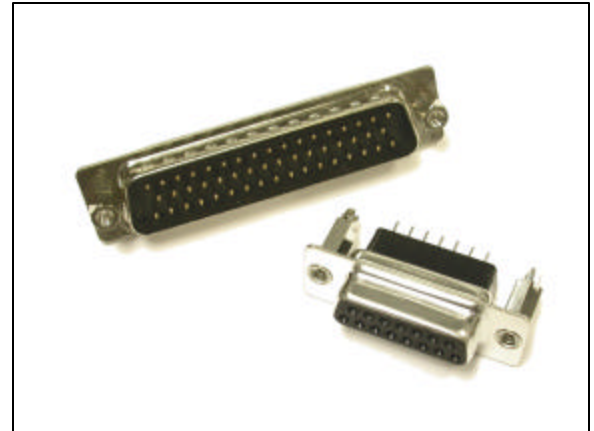


SERIES 627 / 628 STANDARD BODY D-SUBMINIATURES VERTICAL MOUNT

The Edac Series 627 (Plug) and 628 (Receptacle) D-Subminiature connectors are used when the connector is to be mounted vertically to the PC board instead of at a right angle to it. This industry-standard series is available in either low or high profile D-shell sizes of 9, 15, 25, 37 and 50 contacts, and can be ordered with optional ferrite filtering. They will mate with all other industry-standard D-Sub connectors that are based on EIA RS232, EIA RS449, and MIL-C-24308 standards. All connectors feature a metal shell for EMI/RFI shielding and have two prong board locks for strong vertical retention to the printed circuit board. Indents on the plug shell provide grounding and additional mating retention. Threaded inserts and standoffs are also available.

SPECIFICATIONS

- Contact Separation Force: 1 to 10 oz. per position
- Ferrite Attenuation: 20dB MIN@30MHz, 30dB MIN@50MHz
- Contact Material: plug brass; receptacle phosphor bronze
- Contact Plating: Gold over nickel for the mating area
- Shell Material: Nickel-plated steel
- Operating Temperature: -55° to +125° C
- Current Rating: 5 amperes
- Contact Resistance: 10 milliohms maximum
- Dielectric Withstanding Voltage: 1000 V AC rms @0asl
- Insulation Resistance: 5000 megohms minimum



This series is available worldwide through our global distribution network. Factory standard package is 25 pieces per carton.

ORDERING CODE

SAMPLE PART NUMBER: 627-025-220-047

- **627 = Series Number** : Plug with vertical mount. For Receptacle use series 628.
- **025 = Number of Contacts** : 025 = 25 pins. Available in 9, 15, 25 or 37 pins (stamped contacts) or with 50 pins (machined contacts)
- **2 = Contact Plating Code** : 2 = gold flash (euro class 3). Other standard plating options include 3 for 15u gold plate (euro class 2), and 6 for 30u gold plate (euro class 1).
- **20 = Contact Style** : 20 = 0.125 (3.18mm) PCB tail. Other styles : 21 = 0.165 (4.18mm) PCB tail; 22 = solder cup termination; 28 = ferrite filtered
- **0 = Modification Code** : 0 = standard part. A code of 9 indicates that this is a custom product. Edac can custom manufacture D-Subs to meet any design criteria. This includes unique contact plating, special contact lengths, board mount options, or panel mount hardware, as well as extended body options and alternate plastics or metals. This family is also available with extended plastic bodies - see 627 Extended Body series.
- **4 = Body Style** : 4 = metal covered 7mm (0.276") low profile body; 5 = metal covered 12 mm (0.472") high profile body; 6 = metal covered 7mm low profile body with machined contacts.
- **7 = Panel Mounting Options** : 7= 4-40 UNC threaded standoff with board locks; 1 = 0.125 (3.18mm) diameter through-hole; 2 = 440 UNC threaded insert; 3 = 440 UNC threaded standoff; 6 = 440 UNC threaded insert with board locks; 8 = 4-40 UNC threaded fixed standoffs