

PRODUCT NUMBER
 20020204-XXXXXXLF

 20020204-A0LF

PITCH

 C : 3.50 mm
 D : 3.81 mm
 G : 5.00 mm
 H : 5.08 mm

POLES

 02: 2 POLES
 03: 3 POLES
 04: 4 POLES

 .
 .
 .

16: 16 POLES

HOUSING CODE

CODE	COLOR	PROCESS
6	BLACK(RAL 9005)	PIP(NOTE 6)

LF : DENOTED ROHS COMPATIBLE

2 : TAPE & REEL PACKAGING

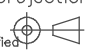

PROPERTY TABLE

FCI SERIES NAME	06-350	06-381	06-500	06-508
PITCH (mm)	3.50	3.81	5.00	5.08
VOLTAGE RATING (VAC)	300	300	300	300
CURRENT RATING (A)	10	10	12	12
WITHSTANDING VOLTAGE (kV)	1.6	1.6	1.6	1.6
OPERATING TEMP. (°C)	-40~+65	-40~+65	-40~+65	-40~+65
SOLDERING TEMP. (°C)	250±10 (5 sec.)	250±10 (5 sec.)	250±10 (5 sec.)	250±10 (5 sec.)
POLES AVAILABLE	02~16	02~16	02~12	02~12
SAFETY CERTIFICATE	PENDING			

NOTES:

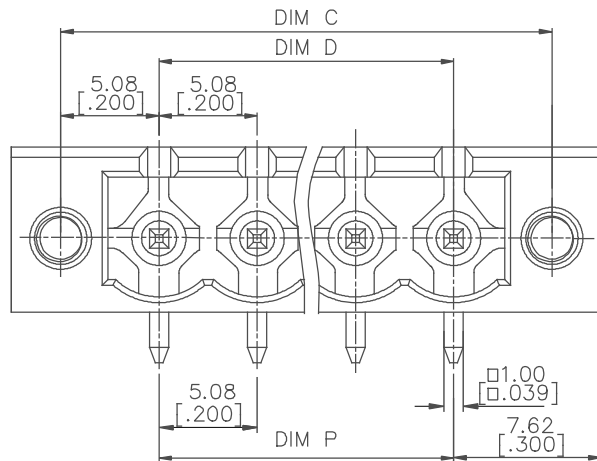
1. MATERIAL:

- 1-1. TERMINAL: COPPER ALLOY, TIN PLATED.
- 1-2. HOUSING: HIGH TEMPERATURE THERMOPLASTIC RESIN, UL94V-0 RATED.
- 1-3. FLANGE NUT: STEEL, M2.5, ZINC PLATED.
2. PRODUCT SPECIFICATION REFER TO FCI GS-12-625.
3. PRODUCT PACKING SPECIFICATION REFER TO FCI GS-14-1394.
4. FCI, SAFETY CERTIFICATE LOGO AND SERIES NAME TO BE SHOWN ON PRODUCT SURFACE.
5. THE PRODUCTS WHERE THE PART NUMBER END IN "LF" MEET THE EUROPEAN UNION DIRECTIVE AND OTHER COUNTRY REGULATIONS AS DESCRIBED IN GS-22-008.
6. THE HOUSING WILL WITHSTAND EXPOSURE TO 260°C PEAK TEMPERATURE FOR 5 SECONDS IN A CONVECTION, INFRA-RED OR VAPOR PHASE REFLOW OVEN.

mat'l. code				surface ASME Y14.5	tolerance ASME Y14.5	projection 	product family TERMINAL BLOCK
ltr	ecn no	dr	date	tolerances unless otherwise specified			title
A		LS	071912	angles 	X.±0.5	MM [INCH]	TERMINAL BLOCK PLUGGABLE, SOCKET, SIGNAL, R/A W/FLANGE(PIP)
				X'±1'	X.X±0.3	scale	
					X.XX±0.1		
				dr	LEIF SHEN	041911	dwg no
				enr	LEIF SHEN	041911	sheet 1 of 5
				chr	LEIF SHEN	041911	size
				appd	JOSEPH HSIA	041911	A4
sheet index	revision sheet	A	A	A	A	A	type
		1	2	3	4	5	CUSTOMER Drawing

[illegible]

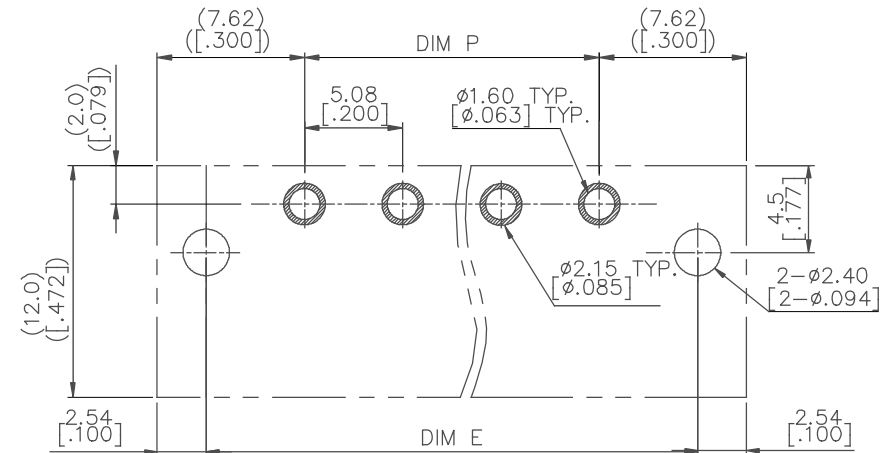
PRODUCT NUMBER	SERIES NAME	PITCH
20020204-HXXXXXXLF	06-508	5.08 mm



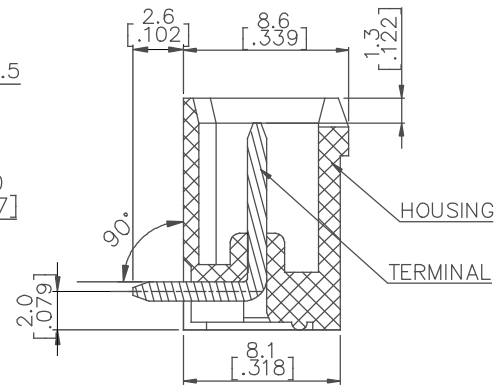
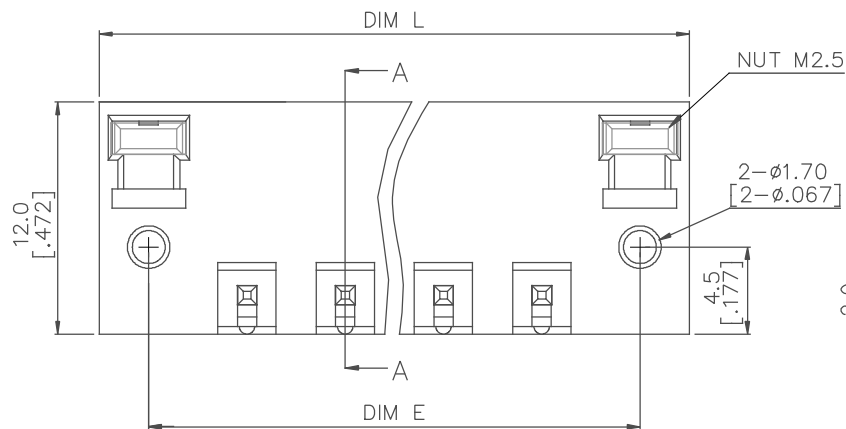
N= Number of poles

DIM L	(N+2)*5.08[.200]
DIM P	(N-1)*5.08[.200]
DIM C	(N+1)*5.08[.200]
DIM D	(N-1)*5.08[.200]
DIM E	(N+1)*5.08[.200]

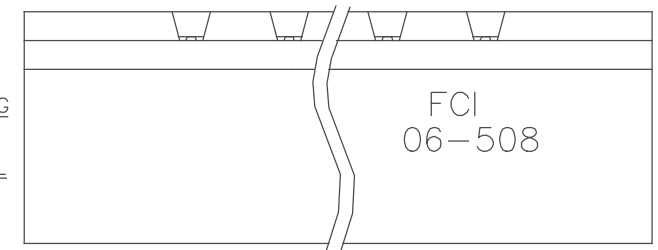
POLES	TOLERANCE
2p-3p	±0.15[.006]
4p-8p	±0.20[.008]
9p-12p	±0.25[.010]



RECOMMENDED PCB LAYOUT



SECTION A-A



mat'l. code	surface ASME Y14.5 ✓	tolerance ASME Y14.5	projection 	product family TERMINAL BLOCK
ltr	ecn no	dr	date	title TERMINAL BLOCK PLUGGABLE, SOCKET, SIGNAL, R/A W/FLANGE(PIP)
A				dwg no 20020204
				sheet 5 of 5
				size A4
				type CUSTOMER Drawing
sheet index	revision sheet			