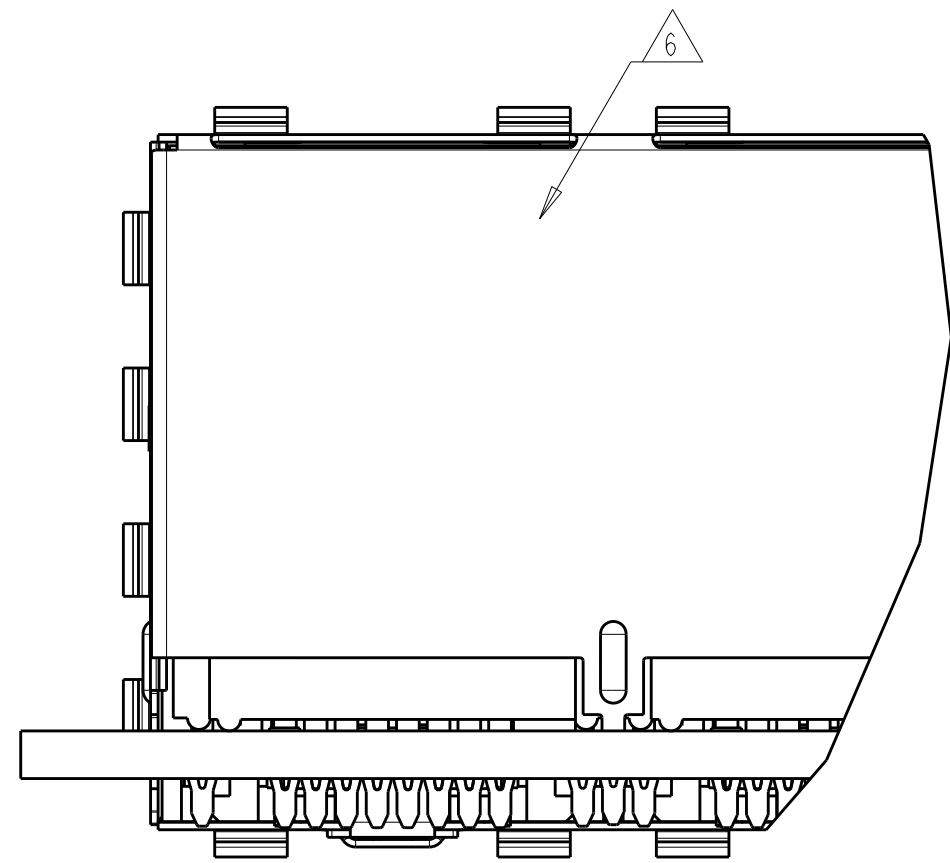
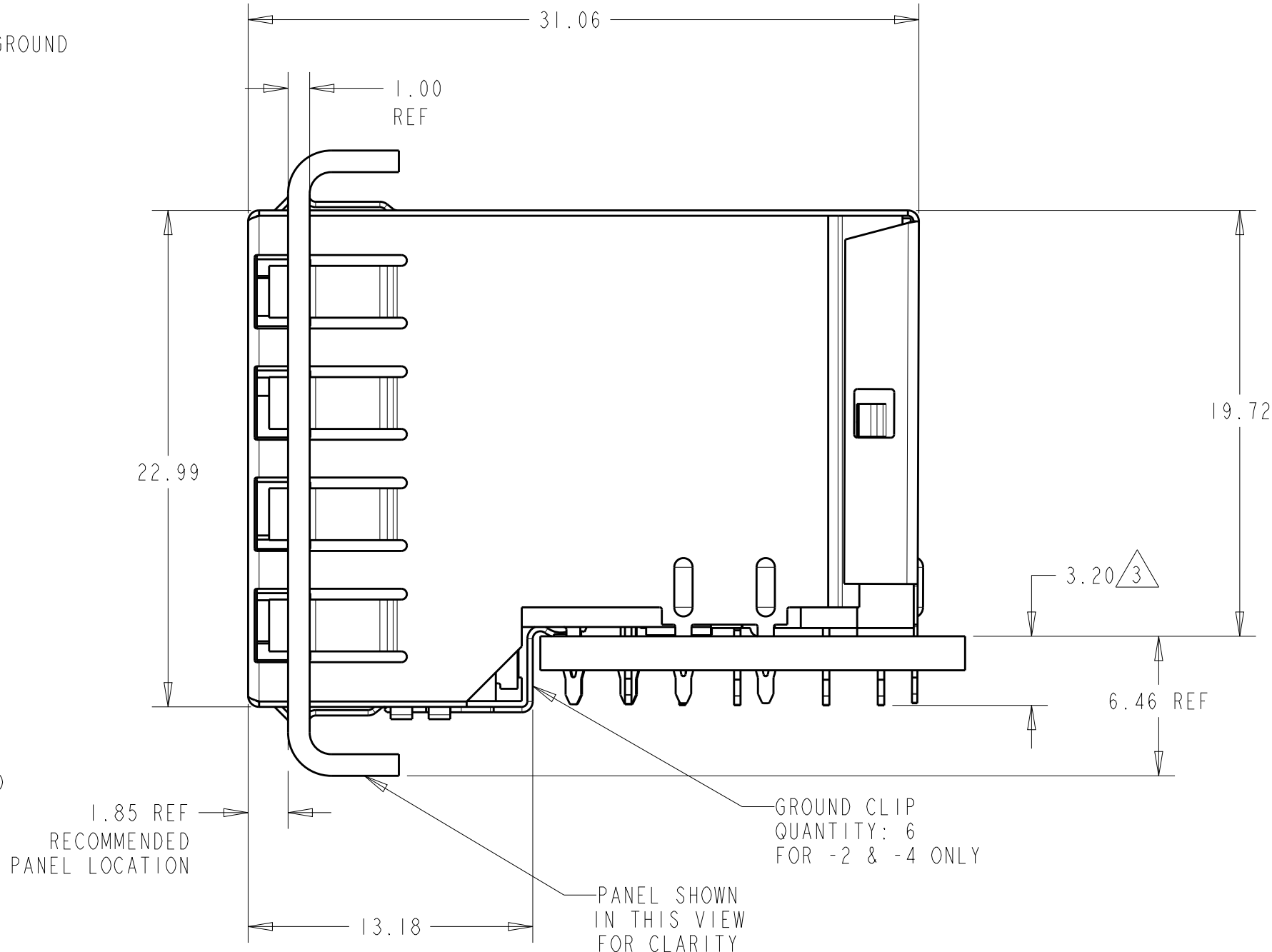
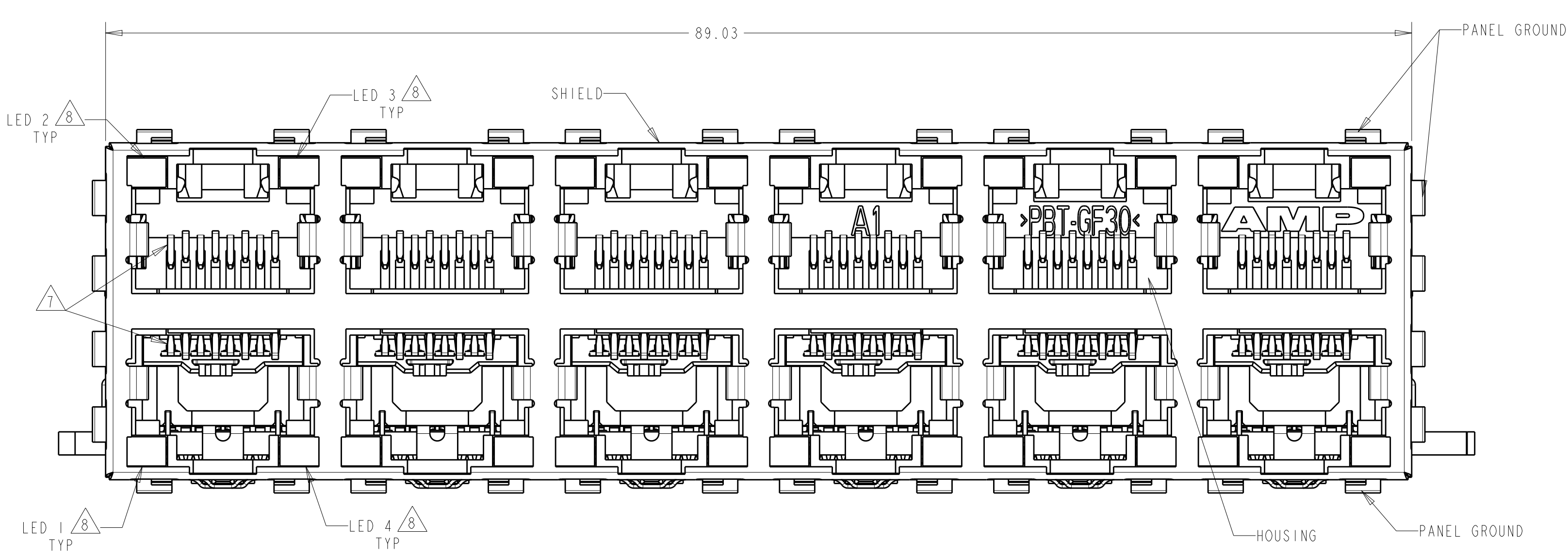
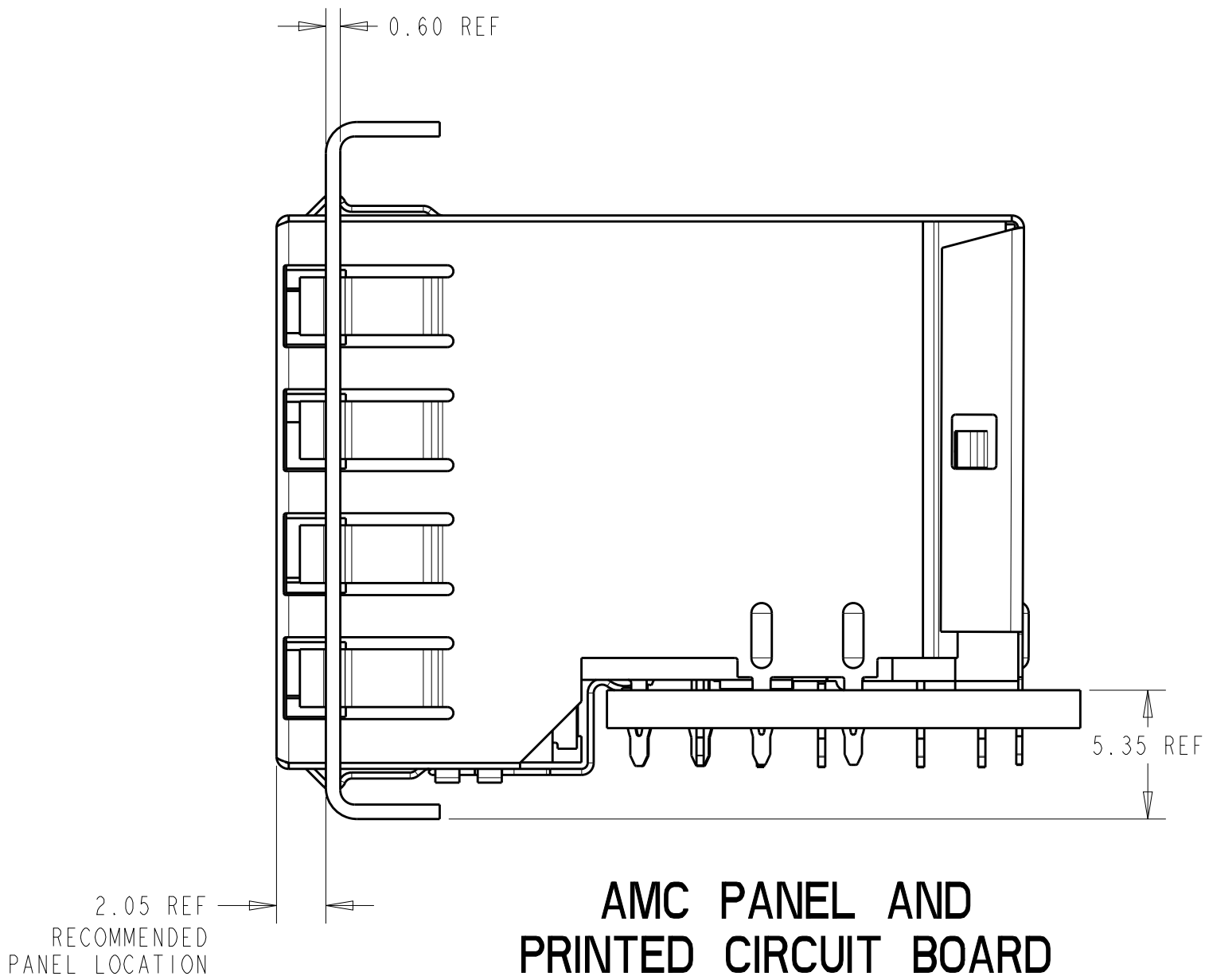


REVISIONS					
P	LTR	DESCRIPTION	DATE	DWN	APVD
B		REV PER ECO-07-001858	28MAR2007	RG	JW
B1		ADDED NEW DASH NUMBER	23MAY2008	DZ	SY
B2		ECR-08-020353	13AUG2008	AL	SY
C		ECO-15-006810	22JAN2016	LL	SH



ATCA PANEL AND
PRINTED CIRCUIT BOARD
ASSEMBLY LAYOUT

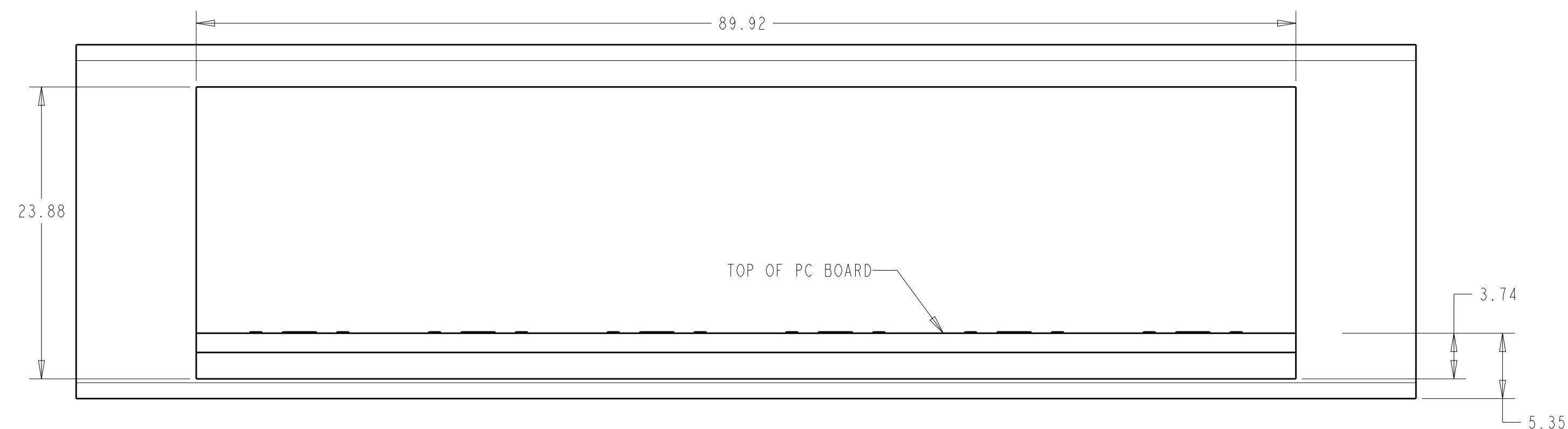


AMC PANEL AND
PRINTED CIRCUIT BOARD
ASSEMBLY LAYOUT

- MATERIAL:
HOUSING:
PBT POLYESTER, BLACK, UL 94V-0
TERMINALS:
0.33 THICK PHOSPHOR BRONZE PLATED WITH 1.27µm MINIMUM THICK HARD GOLD IN LOCALIZED AREA AND 2.0µm MINIMUM THICK MATTE TIN IN COMPLIANT PIN TERMINAL AREA
OVER 1.27µm MINIMUM THICK NICKEL UNDERPLATE
SHIELD:
0.25 THICK COPPER ALLOY PLATED WITH 2.03µm MINIMUM TIN OVER 1.27 µm MINIMUM NICKEL
GROUND CLIP: 0.25 THICK COPPER ALLOY PRE-PLATED WITH 2.03µm MINIMUM MATTE TIN OVER 1.27µm MINIMUM NICKEL
LIGHT EMITTING DIODE (LED):
DIFFUSED EPOXY LENS, 12.95 CARBON STEEL WIREFRAME LEADS PREPLATED WITH 8.89µm THICK Sn/Cu OVER 2.03µm THICK Ag OVER 1.02µm THICK Cu OVER 3.56µm THICK Ni OVER 1.02µm THICK Cu UNDERPLATE
LED COMPLIANT PIN CONTACTS:
0.3 THICK BRASS PLATED WITH 2µm MINIMUM MATTE TIN OVER 1.27µm MINIMUM NICKEL UNDERPLATE.
2. JACK CAVITY CONFORMS TO FCC RULES AND REGULATIONS, PART 68 SUBPART F.
3. MAXIMUM PIN LENGTH 3.40 FROM TOP SURFACE OF PC BOARD
4. FINISHED PLATED THROUGH HOLE DIAMETER - ANNULAR RING DIAMETER 1.3 TO 1.5
5. DATUMS AND BASIC DIMENSIONS ESTABLISHED BY CUSTOMER
6. DATE CODE LOCATED ON REAR OF PART APPROXIMATELY AS SHOWN
7. CONTACTS ARE NOT INTENDED TO BE ALIGNED WITH EACH OTHER
8. SUGGESTED OPERATING CURRENT FOR LEDS IS 20mA
9. NO PANEL GROUNDS.

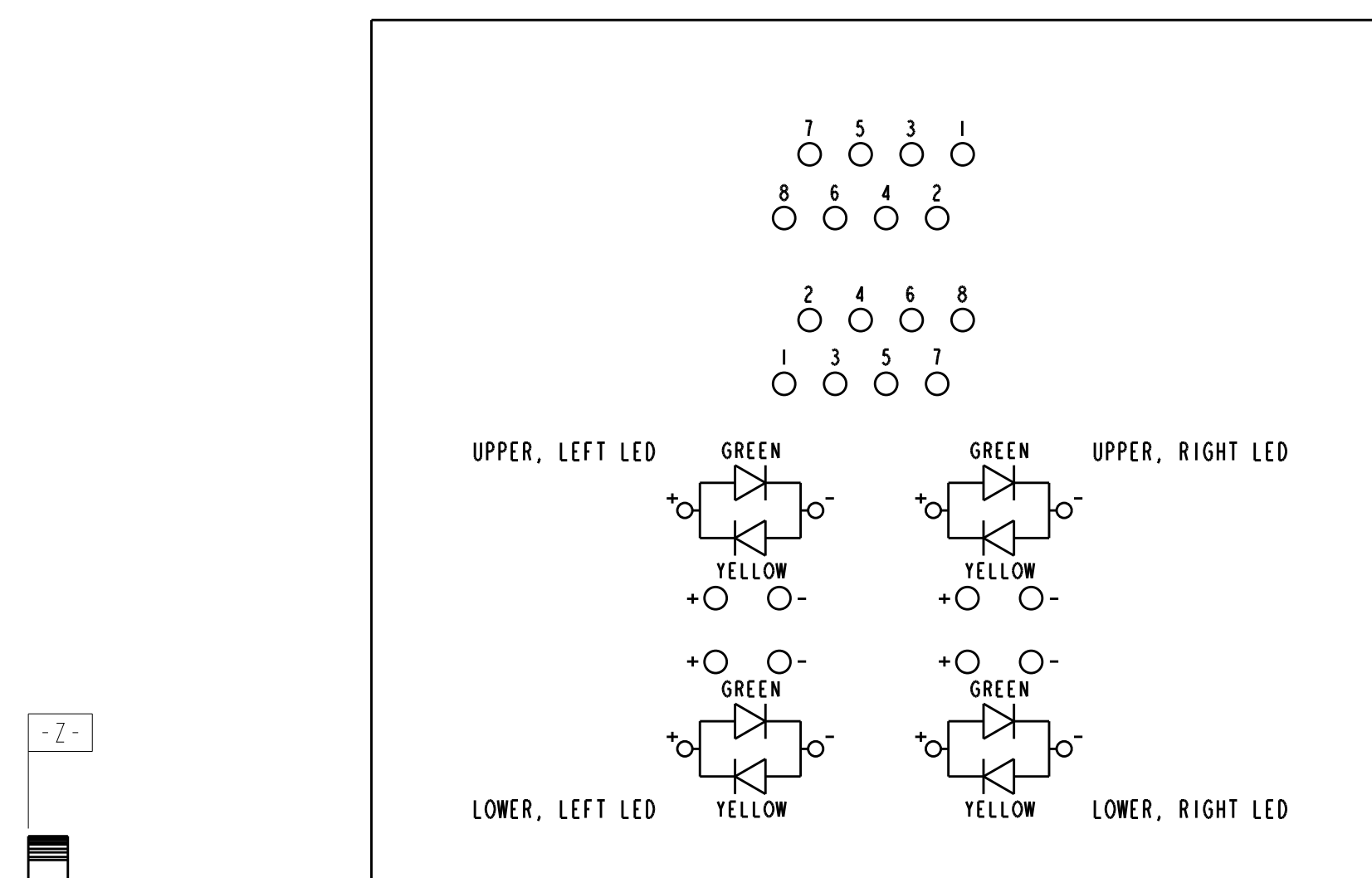
9	15.88	GREEN/YELLOW	GREEN/YELLOW	GREEN/YELLOW	GREEN/YELLOW	WITH GROUND CLIP	1888509-5
	15.88	GREEN/YELLOW	GREEN/YELLOW	GREEN/YELLOW	GREEN/YELLOW	WITH GROUND CLIP	1888509-4
	16.13	YELLOW	YELLOW	GREEN	GREEN	WITHOUT GROUND CLIP	1888509-3
	15.88	GREEN	GREEN	GREEN	GREEN	WITH GROUND CLIP	1888509-2
	16.13	GREEN	GREEN	GREEN	GREEN	WITHOUT GROUND CLIP	1888509-1
M DIM		LED #4 (LOWER-RIGHT)	LED #3 (UPPER-RIGHT)	LED #2 (UPPER-LEFT)	LED #1 (LOWER-LEFT)	DESCRIPTION	PART NUMBER

THIS DRAWING IS A CONTROLLED DOCUMENT.		DWN L.A.MAYER 28OCT2006	TE Connectivity	
DIMENSIONS:		CHK J.WESTMAN 28OCT2006		
mm		APVD S.FLICKINGER 28OCT2006		
TOLERANCES UNLESS OTHERWISE SPECIFIED:		PRODUCT SPEC		
0 PLC ±		108-1854	NAME STACKED MOD JACK ASSEMBLY, 2 X 6, 8 POSN, W/LEDS, RJ45, SHIELDED, PANEL GROUND, OFFSET, CAT 5	
2 PLC ±0.13		APPLICATION SPEC		
3 PLC ±		114-2160	SIZE A1	
4 PLC ±		WEIGHT		
ANGLES ±1°		CUSTOMER DRAWING	SCALE 4:1	
FINISH		RESTRICTED TO		
MATERIAL SEE NOTE 1		100779 ©=1888509	SHEET 1 OF 2	
SEE NOTE 1		REV C		

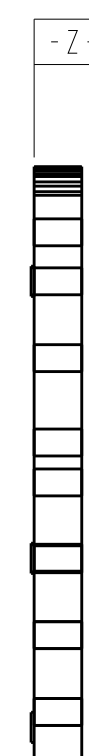


AMC PANEL AND PRINTED CIRCUIT BOARD LAYOUT

SCALE 3:1



BI-COLOR LED SCHEMATIC
FOR 1888509-4,5
SCALE 4:1



—FRONT OF CONNECTOR

4805 (3/13)