

CATALOG LISTING

31AT43-T

1 OF 1

REPLACES -

RELEASE NO. PR-23222

CHECK

REVISIONS

A

C095233

TSM

14 JUL 99

B

205422

JLH

22 APR 02

C

D

E

F

G

H

I

J

K

L

M

N

O

P

Q

R

S

T

U

V

W

X

Y

Z

AA

AB

AC

AD

AE

AF

AG

AH

AI

AJ

AK

AL

AM

AN

AO

AP

AQ

AR

AS

AT

AU

AV

AW

AX

AY

AZ

BA

BB

BC

BD

BE

BF

BG

BH

BI

BJ

БК

BL

BM

BN

BO

BP

BQ

BR

BS

BT

BU

BV

BW

BX

BY

BZ

CA

CB

CC

CD

CE

CF

CG

CH

CI

CJ

CK

CL

CM

CN

CO

CP

CQ

CR

CS

CT

CU

CV

CW

CX

CY

CZ

DA

DB

DC

DD

DE

DF

DG

DH

DI

DJ

DK

DL

DM

DN

DO

DP

DQ

DR

DS

DT

DU

DV

DW

DX

DY

DZ

EA

EB

EC

ED

EE

EF

EG

EH

EI

EJ

EK

EL

EM

EN

EO

EP

EQ

ER

ES

ET

EU

EV

EW

EX

EY

EZ

FA

FB

FC

FD

FE

FF

FG

FH

FI

FJ

FK

FL

FM

FN

FO

FP

FQ

FR

FS

FT

FU

FV

FW

FX

FY

FZ

GA

GB

GC

GD

GE

GF

GG

GH

GI

GJ

GK

GL

GM

GN

GO

GP

GQ

GR

GS

GT

GU

GV

GW

GX

GY

GZ

HA

HB

HC

HD

HE

HF

HG

HH

HI

HJ

HK

HL

HM

HN

HO

HP

HQ

HR

HS

HT

HU

HV

HW

HX

HY

HZ

IA

IB

IC

ID

IE

IF

IG

IH

II

IJ

IK

IL

IM

IN

IO

IP

IQ

IR

IS

IT

IU

IV

IW

IX

IY

IZ

JA

JB

JC

JD

JE

JF

JG

JH

JI

JJ

JK

JL

JM

JN

JO

JP

JQ

JR

JS

JT

JU

JV

JW

JX

JY

JZ

KA

KB

KC

KD

KE

KF

KG

KH

KI

KJ

KK

KL

KM

KN

KO

KP

KQ

KR

KS

KT

KU

KV

KW

KX

KY

KZ

LA

LB

LC

LD

LE

LF

LG

LH

LI

LJ

LK

LL

LM

LN

LO

LP

LQ

LR

LS

LT

LU

LV

LW

LX

LY

LZ

MA

MB

MC

MD

ME

MF

MG

MH

MI

MJ

MK

ML

MM

MN

MO

MP

MQ

MR

MS

MT

MU

MV

MW

MX

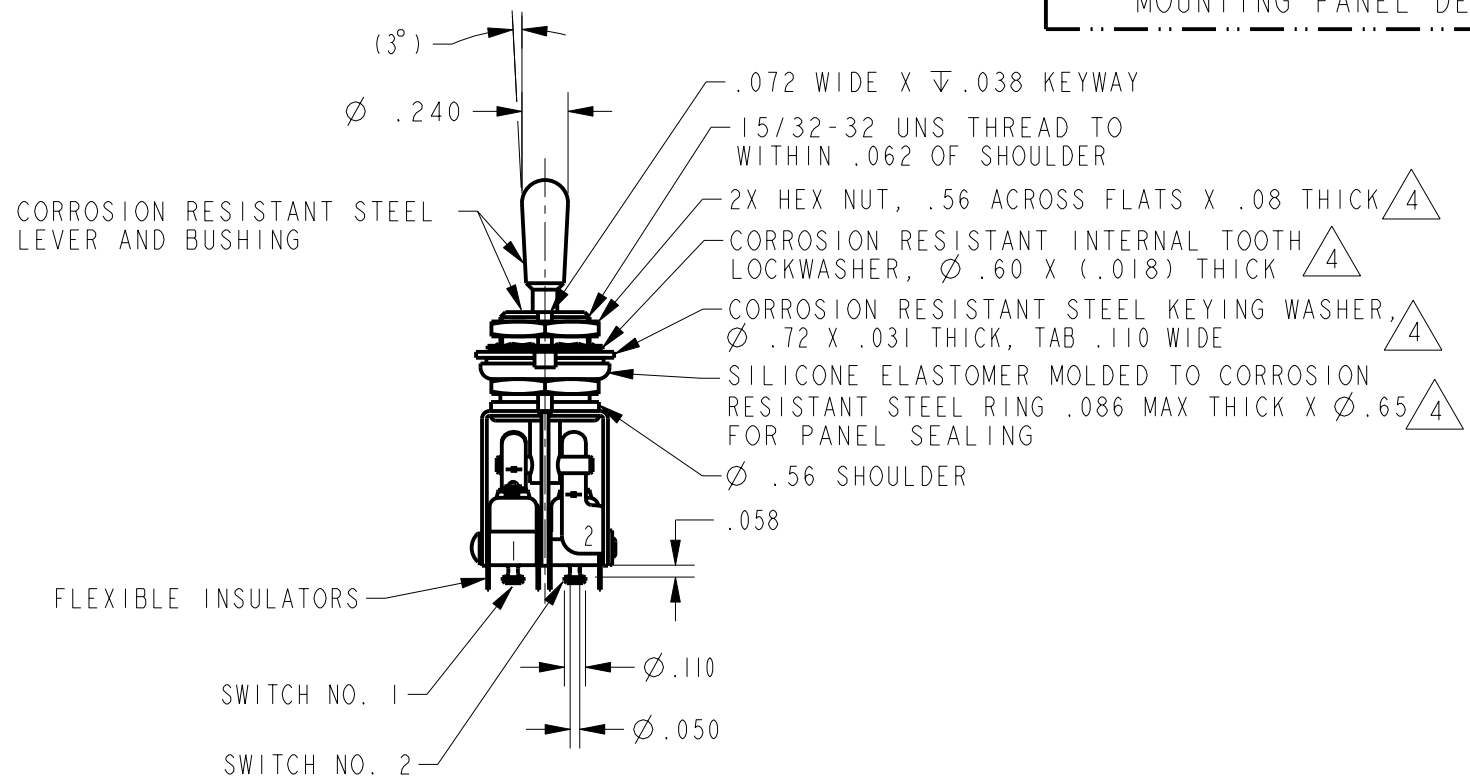
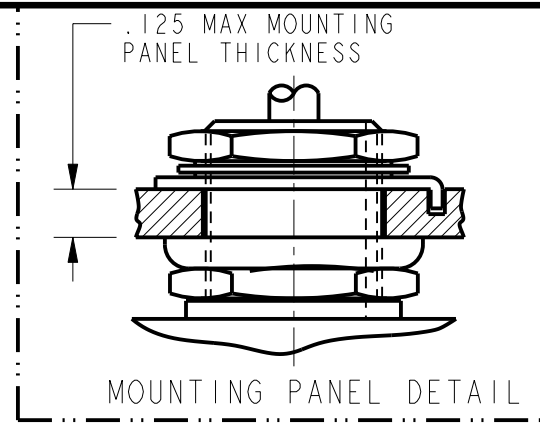
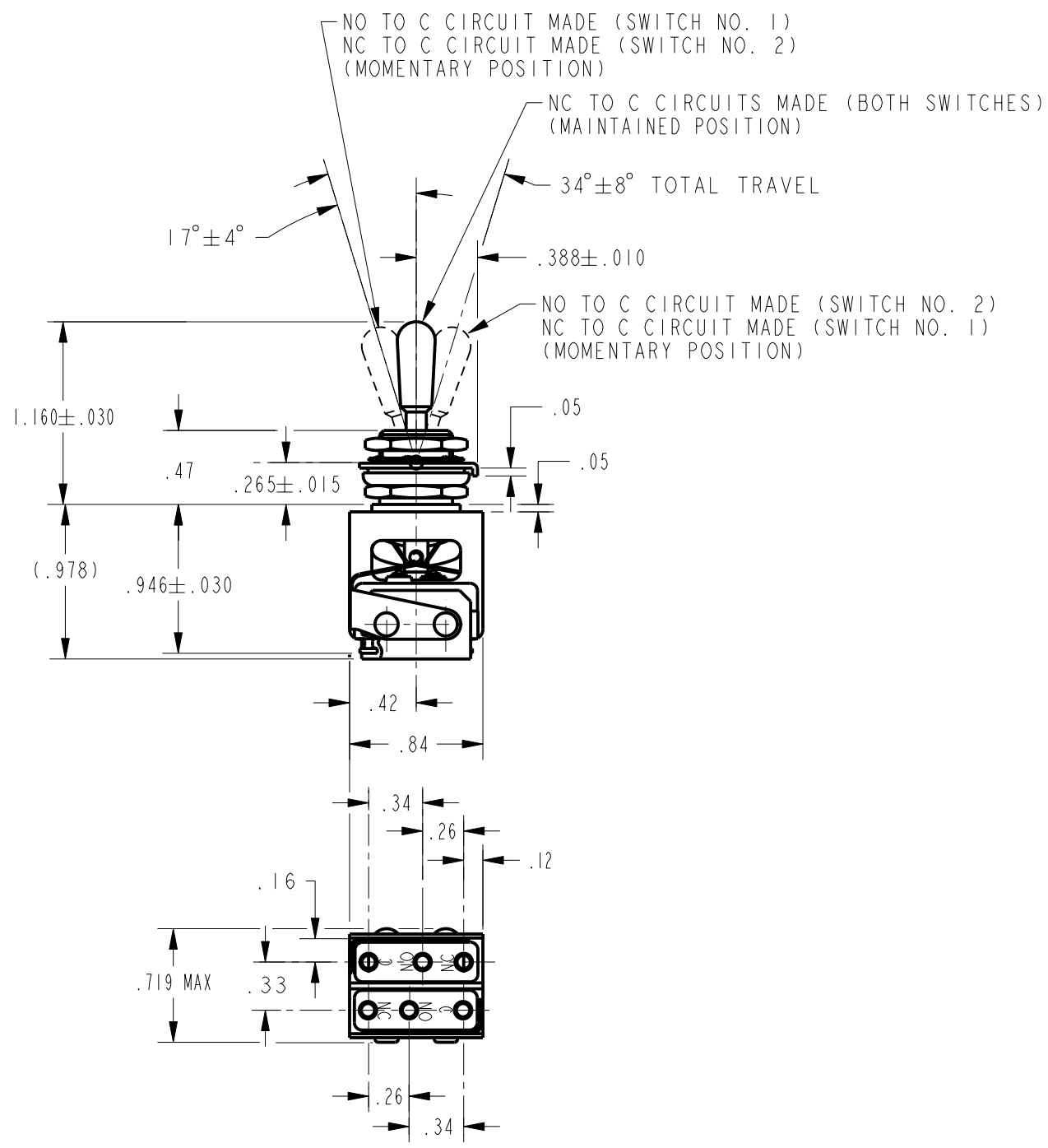
MY

MY

MY

MY

Y14.5M-1982 APPLIES



- NOTES
- 1 - 2X UNIT INCLUDES CATALOG LISTING 11SM76-T TYPE BASIC SWITCHES
 - 2 - TERMINALS ARE PLATED FOR SOLDERING
 - 3 - BASIC SWITCHES MARKED "1" AND "2" ON ENDS, (C, NO, NC) MARKED ON BRACKET
 - 4 - HARDWARE FURNISHED ASSEMBLED WITH SWITCH OR IN PACKET PER MIL-PRF-8805

THIS DRAWING COVERS A PROPRIETARY ITEM AND IS THE PROPERTY OF MICRO SWITCH, A DIVISION OF HONEYWELL. THIS DRAWING IS NOT TO BE COPIED OR USED WITHOUT THE APPROVAL OF MICRO SWITCH		THIRD ANGLE PROJECTION	
CHARACTERISTICS	ELECTRICAL DATA		SCALE FULL
	CONTACT ARRANGEMENT 2X S P D T		DO NOT SCALE PRINT
	30 VOLTS DC RATING		UNLESS OTHERWISE SPECIFIED TOLERANCES ARE
	INDUCTIVE-- SEA LEVEL-- .5 AMP 50,000 FT -- .5 AMP RESISTIVE-- SEA LEVEL-- 1 AMP 50,000 FT -- 1 AMP MAXIMUM INRUSH--- 2 AMP		ONE PLACE (.0) ±.030 TWO PLACE (.00) ±.015 THREE PLACE (.000) ±.005 ANGLES ± WEIGHT