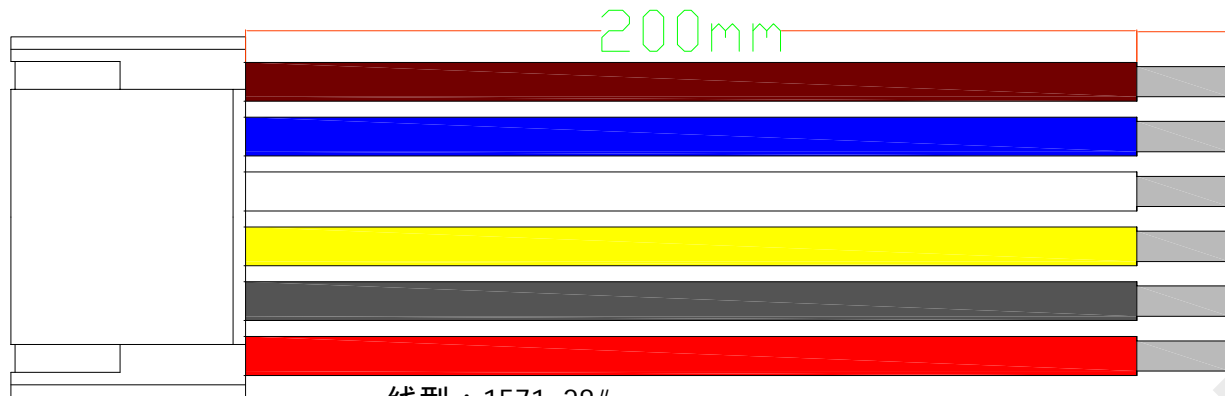


A

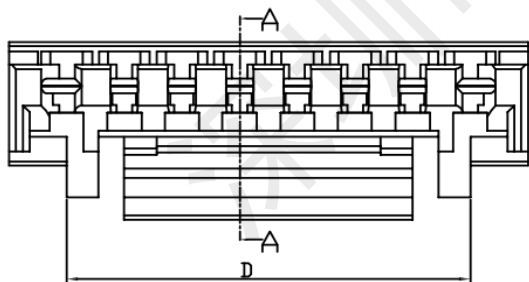
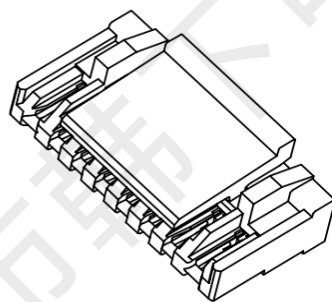
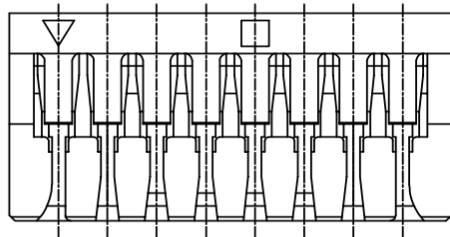
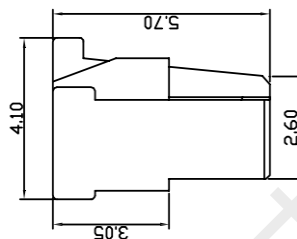
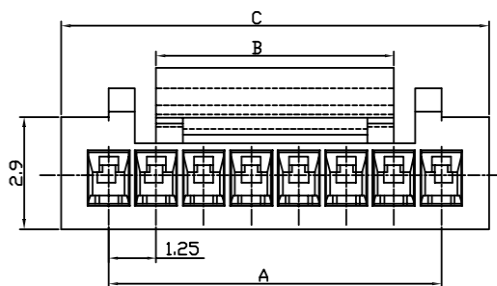
B

C

D

棕
蓝
白
黄
黑
红

线型：1571 28#



剥皮镀锡

REV.

ECN

DESCRIPTION

MDF'D

DATE

新订图面

Pin Poles	型号 (Type)	A	B	C	D
2	GH-2Y	1.25	2.0	3.75	---
3	GH-3Y	2.5	3.0	5.0	---
4	GH-4Y	3.75	4.2	6.25	---
5	GH-5Y	5.0	4.2	7.5	---
6	GH-6Y	6.25	6.2	8.75	---
7	GH-7Y	7.5	6.2	10.0	8.7
8	GH-8Y	8.75	6.2	11.25	8.7
9	GH-9Y	10.0	6.2	12.50	8.7
10	GH-10Y	11.25	8.2	13.75	10.7
11	GH-11Y	12.50	8.2	15.0	10.7
12	GH-12Y	13.75	8.2	16.25	10.7
13	GH-13Y	15.0	8.2	17.5	10.7
14	GH-14Y	16.25	8.2	18.75	10.7
15	GH-15Y	17.5	8.2	20.0	10.7
16	GH-16Y	18.75	8.2	21.25	10.7
18	GH-18Y	21.25	8.2	23.75	10.7

技术要求

- 温度范围 (Temperature range): $-25^{\circ}\text{C} \sim +85^{\circ}\text{C}$
- 额定电压 (Voltage rating): 30V
- 额定电流 (Current rating): 1.5A
- 接触电阻 (Contact resistance): $\leq 0.02\ \Omega$
- 绝缘电阻 (Insulation resistance): $\geq 1000\text{M}\Omega$
- 耐压 (Withstand voltage): 1000V. AC/1分钟 (Minute)



深圳市韩下电子有限公司

品名 (ITEM NO)	HX GH1.25-6P DT 200mm 28AWG
料号 (PART NO)	
图号 (DWG NO)	

页码 (SHEET)	1	单位 (UNIT): MM
版本 (REV)	A1	比例 (SCALE) 1:1
日期 (DATE)	2024. 3. 20	
设计 (DESIGN)	黄彬	未注公差 TOLERANCE UNSPECIFIED
审核 (CHECKED)	张伟	> XX ±3
核准 (APPROVED)	罗小春	> X ±1
		0. X ±0.20
		0. XX ±0.15