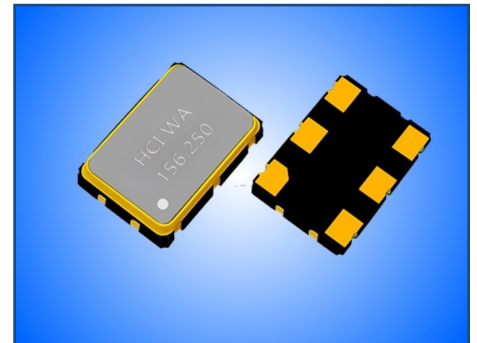


**OSCILLATOR UNIT WITH LVDS OUTPUT IN SMD 7.0x5.0mm CERAMIC SEAM SEAL PACKAGE.**
**PRODUCT FEATURES**

- Small dimensions 7.0x5.0x1.6 with 6 solder pads.
- Highly reliable seam sealed ceramic package.
- Wide frequency range.
- Low jitter and phase noise.
- RoHS compliant, LEAD-FREE and HALOGEN-FREE.

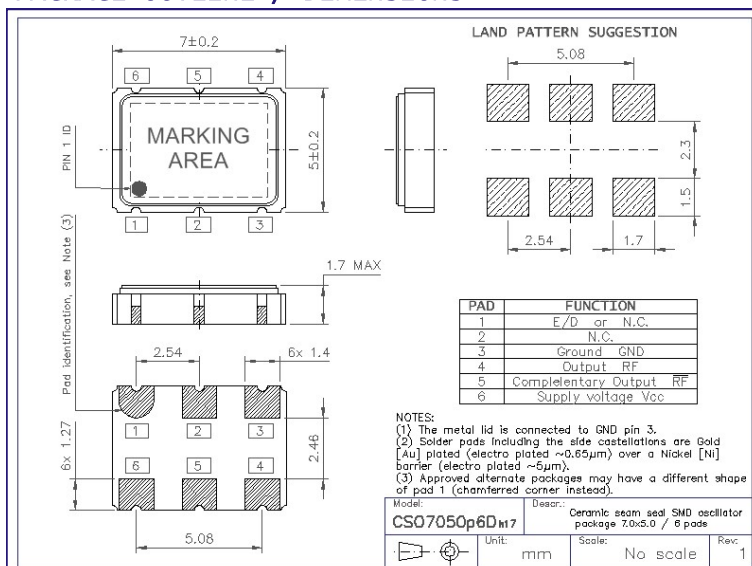
**APPLICATIONS**

- High speed communication
- Handheld equipment
- Telecom equipment

**PRODUCT PHOTO (NOT IN SCALE)**

**PRODUCT SPECIFICATIONS**

| PARAMETER                   | C075D6                       | CONDITIONS / REMARKS                     |
|-----------------------------|------------------------------|--|
| Nominal frequency range     | 10 ~ 1500MHz                 | Fund., Overtone or PLL                   |
| Supply voltage              | 1.8VDC / 2.5VDC / 3.3VDC     | Other option possible                    |
| Supply current              | 100mA                        | Maximum, Fund mode lower I <sub>CC</sub> |
| Frequency stability         | ±25ppm / ±50ppm / ±100ppm    | See note below.                          |
| Operating temperature range | -40 to +85°C or -55 to 125°C | Other options available.                 |
| Output waveform and load    | LVDS / 100Ω                  | R <sub>L</sub> between outputs           |
| Output voltage level HIGH   | 1.40V                        | Typical                                  |
| Output voltage level LOW    | 1.10V                        | Typical                                  |
| Rise and Fall times         | 1.5ns                        | @ 20~80~20%V <sub>CC</sub>               |
| Symmetry (duty cycle)       | 45~55%                       | @ outputs cross point                    |
| Phase Jitter RMS            | <1ps                         | Integrated 12kHz≤F <sub>J</sub> ≤20MHz   |

Note: Stability includes frequency deviations at +25°C, over temperature range, due to supply voltage changes, output load changes, shock and vibration.

**PACKAGE OUTLINE / DIMENSIONS**

**PACKAGING INFORMATION**

- Tape & Reel compliant to EIA-481.
- Embossed carrier width 16mm.
- Component pitch in carrier 8mm.
- Reel diameter 180mm.
- QTY per reel: 1,000pcs

**RECOMMENDED REFLOW PROFILE**
