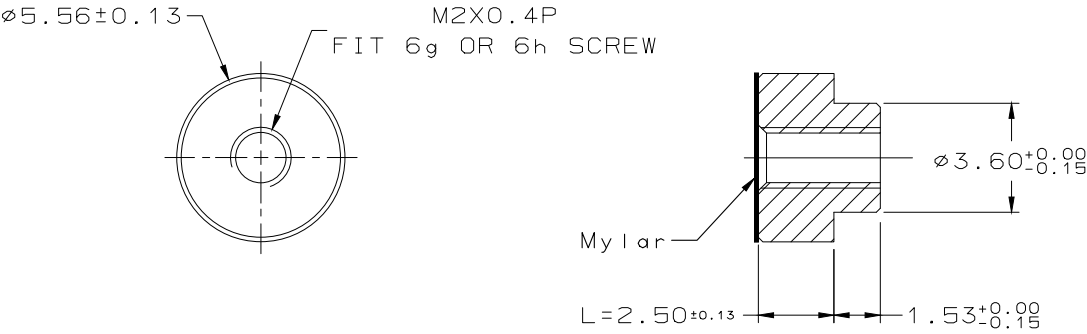


Notice:This fastener is a part of the total design and its use in the completed assembly is controlled by the user. Stanley assumes responsibility only for meeting specifications shown on this drawing

Stanley will supply parts per this drawing. If in agreement, please sign & return promptly.  
Auhtorized by:

\_\_\_\_\_  
(Title)  
\_\_\_\_\_  
(Date)

Rev.	Revisions/E.C. number / change	Date	By
01	NEW RELEASE	18-Nov-24	Kaichao



NOTES:

1. MATERIAL : C3604
2. REMOVE ALL BURRS AND SHARP EDGES .
3. FINISH : TIN PLATED
4. PACKAGE : TAPE AND REELED ( 载带 + 麦拉 + 盖带 + 卷盘 ) , PACKAGE QUANTITY : 1000PCS/REEL
5. PARTS ARE TO BE CLEAN AND FREE FROM FOREIGN MATERIAL . DIRT , OIL , GREASE , MOLD RELEASE OR OTHER CONTAMINANTS ARE NOT ALLOWED .
6. THE PART MUST COMPLY WITH RoHS REQUIREMENT .

DIMENSIONS ARE IN MILLIMETERS  
TOLERANCES

0-6	±0.10
6-30	±0.20
30-120	±0.30

ANGLES ±1°

DO NOT SCALE DRAWINGS

Customer Name:		<div>STANLEY Engineered Fastening</div>	Unit : Metric	Drawing No. : HPLC-N20CU-0001	
Customer Part No.: C2916321	Revision: 01			Drawn By: KaiChao Li	Date: 18-Nov-24
Description: 电路板表贴圆螺母柱, M2X2.5, 铜镀锡			Size: A4	Checked By: Jay Lu	Date: 18-Nov-24
This drawing is the property of and may embody proprietary information owned by Stanley. It is provided under confidential relationship for a specific purpose and to return it to Stanley upon request. Copyright © Stanley . All right reserved.			Dimensions & tolerances as per ISO 2768	DO NOT SCALE	Approved By: