

THIS IS A C.A.D. GENERATED DRAWING
DO NOT MAKE MANUAL REVISIONS TO MASTER.



NOTES:

Size 9 way has 2 versions, without logo
and with "MH" logo.

* UNLESS OTHERWISE SPECIFIED TOLERANCES
ON DECIMAL IS: ANGLE $\pm 1^\circ$
UNIT: MM .XX ± 0.35

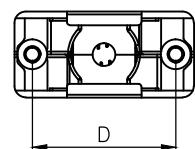
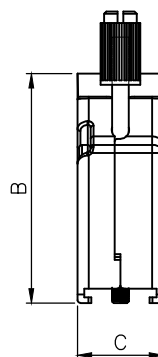
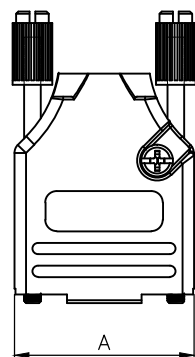
BACKSHELL KIT INCLUDES:

- (2) BACKSHELL HALVES
- (2) 4-40 THUMBSCREWS
- (2) HOUSING SCREWS
- (1) SET OF COMPRESSION INSERTS-VARIOUS SIZES FOR 9-37
DIAMETERS 4mm(.157"), 5mm(.167"), 7mm(.276"), 9mm(.354")
- (1) SET OF COMPRESSION INSERTS-VARIOUS SIZES FOR 50
DIAMETERS 11mm(.433"), 12.5mm(.492"), 14mm(.551"), 15mm(.591")

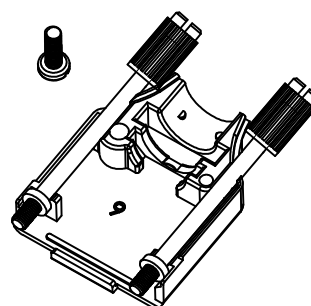
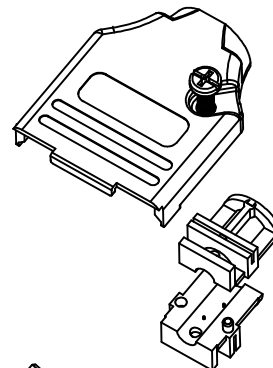
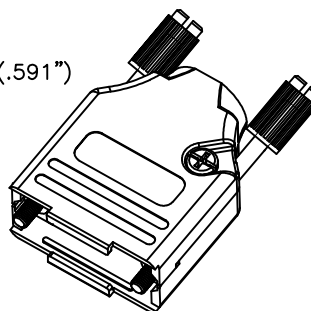
MHDTZK9-DM9S-K=MHDTZK9-RA-PC-K + MHDM9SS

MHDTZK15-DM15S-K=MHDTZK15-RA-PC-K + MHDM15SS

MHDTZK25-DM25S-K=MHDTZK25-RA-PC-K + MHDM25SS



Size 15/25/37 way have only no logo
version.



DIMENSIONS(mm/in)

SIZE	A ± 0.02	B ± 0.02	C ± 0.02	D ± 0.01
9	31.20	39.90	15.00	24.99
	1.228	1.571	0.591	0.984
15	39.50	41.50	15.00	33.32
	1.555	1.634	0.591	1.312
25	53.40	48.60	15.00	47.04
	2.102	1.913	0.591	1.852
37	69.70	53.60	15.00	63.50
	2.744	2.110	0.591	2.500
50	67.50	54.00	18.70	61.00
	2.657	2.126	0.736	2.402

ORDERING INFORMATON:

SIZE	P/N - KITTED	PRODUCT CODE
9-WAY	6560-3105-01	MHDTZK9-RA-PC-K
15-WAY	6560-3105-02	MHDTZK15-RA-PC-K
25-WAY	6560-3105-03	MHDTZK25-RA-PC-K
37-WAY	6560-3105-04	MHDTZK37-RA-PC-K
50-WAY	6560-3105-05	MHDTZK50-RA-PC-K

BACKSHELL MATERIAL:
PLATING:
JACKSCREWS:
M3 HOODSCREWS:
COMPRESSION INSERT:
OPERATING TEMP:

DIE-CAST ZINC ALLOY
NICKEL
STEEL:ZIN PLATED WITH PLASTIC KNOB
STEEL:ZIN PLATED
ABS,UL RECOGNIZED
-40°C TO+120°C

THESE DRAWINGS AND SPECIFICATIONS ARE THE
PROPERTY OF MH CONNECTORS AND SHALL NOT BE
REPRODUCED, COPIED OR USED AS THE BASIS FOR
THE MANUFACTURE OR SALE OF APPARATUS WITHOUT
WRITTEN PERMISSION.

DRAWN Johnny	DATE 11-24-15
APPROVED Victor Lin	DATE 11-24-15



THIS SERIES FULLY CONFORMS TO THE
EUROPEAN UNION DIRECTIVES 2002/95/EC
AND 2002/96/EC FOR RoHS COMPLIANCY.



MH CONNECTORS ,
DIVISION OF EDAC

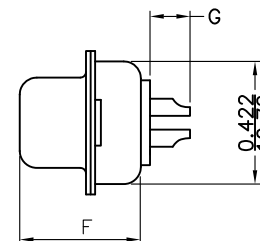
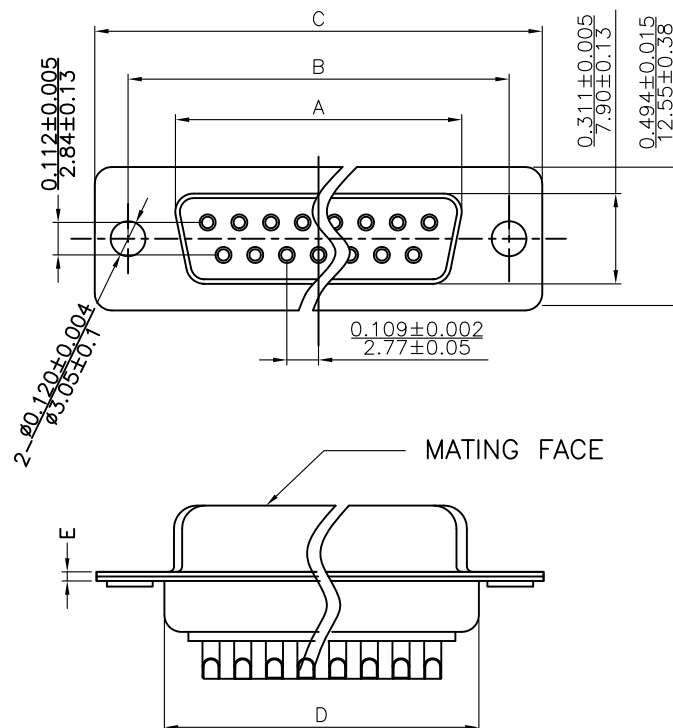
SCALE 1 : 1	SHEET OF 1 OF 1	REV: 7.0
DRAWING No MHDTZK-RA-PC		

THIS IS A C.A.D. GENERATED DRAWING
DO NOT MAKE MANUAL REVISIONS TO MASTER.



* UNLESS OTHERWISE SPECIFIED
TOLERANCES .X \pm 0.38
ON DECIMAL IS: .XX \pm 0.25
.XXX \pm 0.13
UNIT: MM

ISSUE	NUMBER
ORIGINAL	①
DRAWING UPDATED	②
DEC.24.2024 REED	



Material & Finish

Shell:

Steel

Nickel plated

Pin Contact:

Brass

Gold plated over nickel

Insulator:

PBT glass-fiber reinforced UL 94-V0

Number of contact:

9,15,25,37

Current rating: 5 amp

Contact Resistance: 30mΩ MAX

Dielectric strength:

1000V for one minute

Insulator resistance:

5000MΩ Min at 500V DC

Temperature:-55°C ~105°C

ITEM NO	A \pm 0.25	B \pm 0.13	C \pm 0.38	D \pm 0.25	E \pm 0.25	F \pm 0.25	G \pm 0.38
MHDM9SS	16.33(0.643)	24.99(0.984)	30.81(1.213)	19.28(0.759)	0.80(0.0315)	10.9(0.429)	3.5(0.138)
MHDM15SS	24.66(0.971)	33.32(1.312)	39.14(1.541)	27.51(1.083)	0.80(0.0315)	10.9(0.429)	3.5(0.138)
MHDM25SS	38.38(1.511)	47.04(1.852)	53.04(2.088)	41.30(1.625)	0.80(0.0315)	10.9(0.429)	3.5(0.138)
MHDM37SS	54.84(2.159)	63.50(2.500)	69.32(2.729)	57.71(2.272)	0.80(0.0315)	10.9(0.429)	3.5(0.138)

THESE DRAWINGS AND SPECIFICATIONS ARE THE
PROPERTY OF MH CONNECTORS AND SHALL NOT BE
REPRODUCED, COPIED OR USED AS THE BASIS FOR
THE MANUFACTURE OR SALE OF APPARATUS WITHOUT
WRITTEN PERMISSION.

DRAWN	DATE
Iven Ou	09-01-22
APPROVED	DATE



THIS SERIES FULLY CONFORMS TO THE
EUROPEAN UNION DIRECTIVES 2002/95/EC
AND 2002/96/EC FOR RoHS COMPLIANCY.



MH CONNECTORS ,
DIVISION OF EDAC

SCALE	SHEET OF	REV:
1 : 1	1 OF 1	6.0
DRAWING No MHDMXXSS		