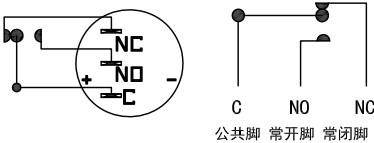
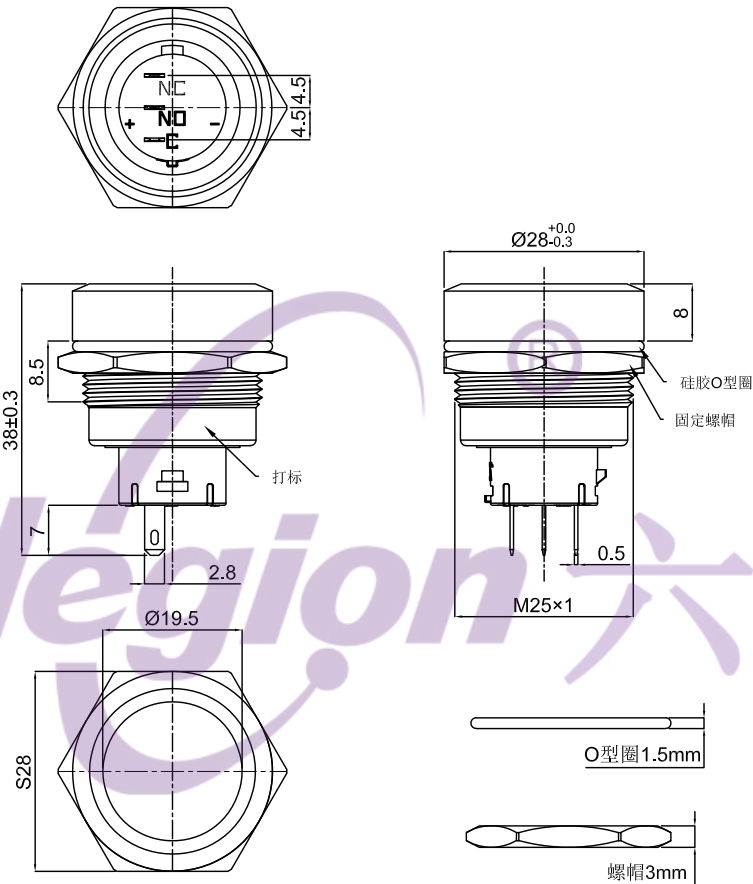
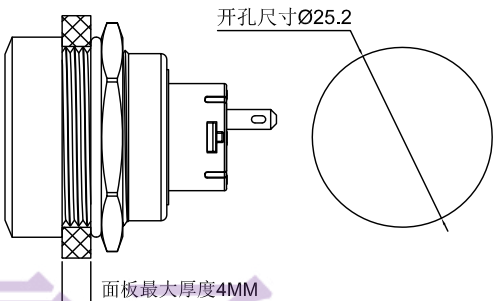



无灯电气原理图



安装视图



- 1.Rating : DC36V 3A.
 - 2.Contact resistance: $\leq 50m\Omega$.
 - 3.Insulation resistance: $\geq 1000M\Omega$ (DC500V).
 - 4.Withstanding voltage: 1500VAC .
 - 5.Operating Force: $\leq 3N$
 - 6.life test: 50000 cycles.
 - 7.Operation temperature range:-25℃~85℃.
 - 8.Sign"* "is importance dimension.
- TEL: 0769-82310511-867

8	C/NO/NC TERMINAL	BRASS	3	Au-PLATED	TOLERANCE UNLESS SPECIFIED									
7	CONTACT	SILVER ALLOY	2											
6	C/NO/NC HOUSING	PA46	1		<1.5: ±0.1mm	ANGULAR ±1°								
5	LED HOUSING	PC	1		> 1.5~5.0:±0.25mm									
					> 5.0:±0.3mm		NO	DATE	REVISIONS			BY	APPD	
4	NUT	BRASS	1	Ni-PLATED	TITLE: PUSH SWITCH				UNIT : MM	ROHS	DWN			
3	O-RING	RUBBER	1	WHTIE	MODEL: HY-25A-P11-S-CU-008				SCALE: 1:1	COMPLIANT	CHK'D			
2	SHELL	铝合金氧化黑	1		东莞市六钧电子五金有限公司						APPD			
1	BUTTON	铝合金氧化黑	1											
NO.	PART	NAME	MATERIAL	QTY	FINISHING							PRO.AGL:		REV :A0