

				TOLERANCE		<b>UMax conn</b> 东莞市友贸实业有限公司 DONGGUAN UMAXCONN ENTERPRISE LIMITED		TITLE: MINI PCI EXPRESS 5.6MM HEIGHT				
				LINEAR	ANGLES			PART NO. 91304-56-052RXXX				
				X±0.40	X°±	APPD:	Jason	MAT'L:	DWG NO. C-91304-56			
				.X±0.30	.X°±	CHKD:	Schumi	FINISH:	UNITS	SCALE	SHEET	REV
0	-----	Lei Songping	Jun,06,2019	.XX±0.20	.XX°±	DRWN:	Lei Songping	Q'TY:	MM	1 : 1	1 OF 7	0
REV	ECN NO.	NAME	DATE	.XXX±0.15	.XXX°±							

NOTES:

1. MATERIAL:  
HOUSING: THERMOPLASTIC, HIGH TEMP, UL94V-0, BLACK COLOR,  
CONTACTS: COPPER ALLOY.  
PEGS: COPPER ALLOY.

2. FINISH:  
CONTACTS: SELECTED GOLD PLATING ON THE CONTACT AREA,  
1u" MIN. GOLD PLATING ON THE SOLDER TAILS,  
50 u" MIN. NICKEL UNDERPLATING OVER ALL.  
PEGS: 120u" MIN. MATTE-TIN OVER 50u" MIN. NICKEL.

3. PACKAGING SPECIFICATION: 9130404001

4. PRODUCT SPECIFICATION: PS-MINI PCI-E-01

5. DATE CODE.

YYWWDD

YY: YEAR (19: 2019)

WW: WEEK (25: THE 25TH WEEK)

DD: (D1~D7: SUNDAY~SATURDAY)

PRODUCT NUMBER CODE

91304 - 56 - 052 R X XX

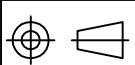
56: 5.6H HEIGHT

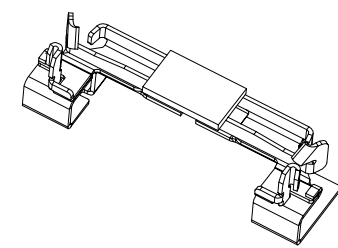
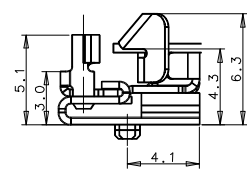
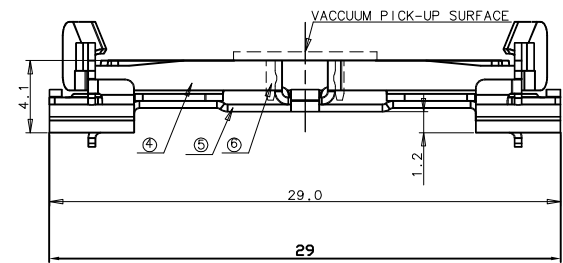
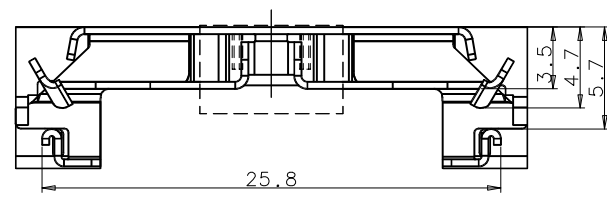
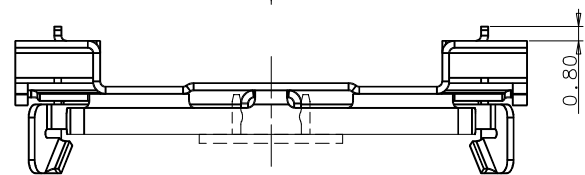
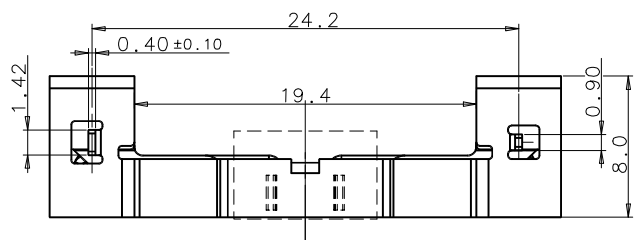
52 CONTACTS

PACKING OPTIONS  
R: TAPE & REEL

HALOGEN OPTIONS  
BLANK: HALOGEN  
HF: HALOGEN FREE  
BK: BRACKET

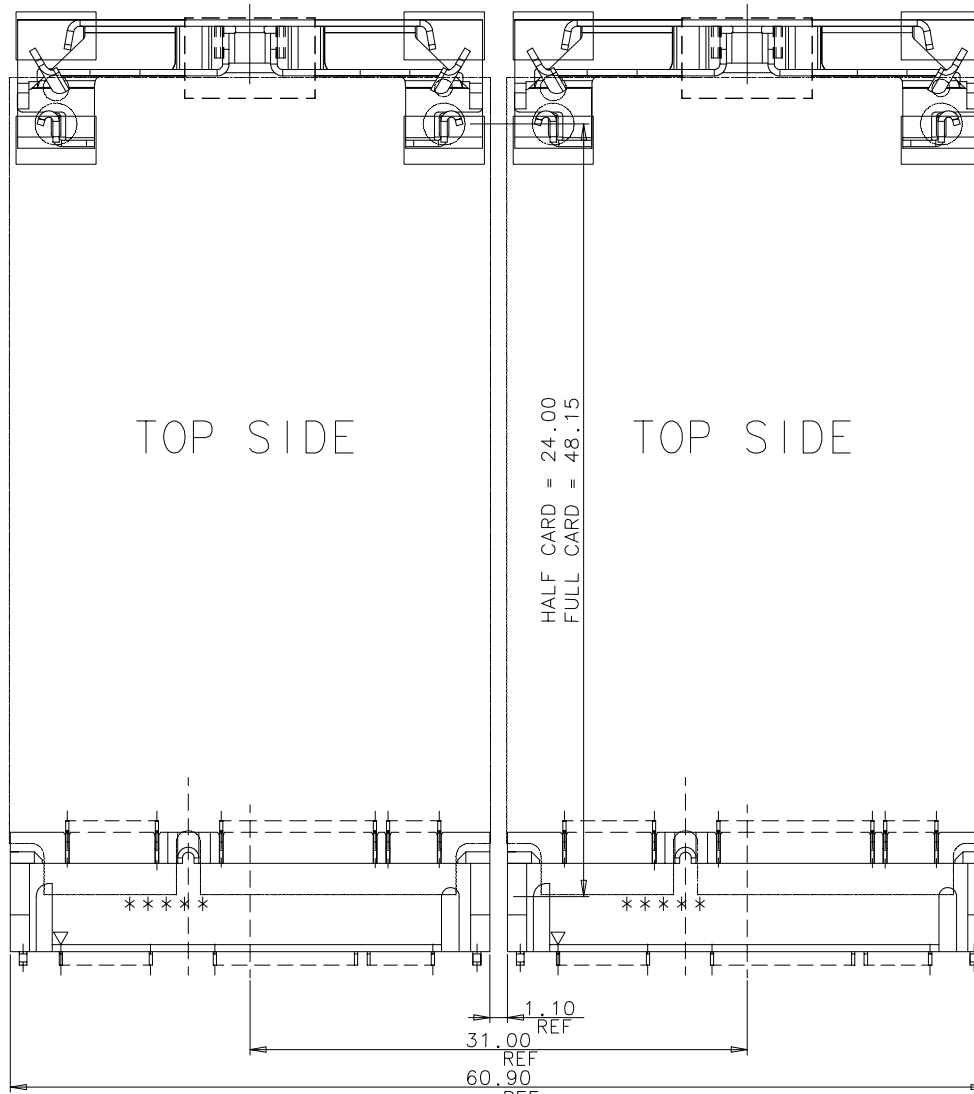
CONTACT AREA PLATING  
0: 30u" GOLD  
1: 10u" GOLD  
2: GOLD FLASH

				TOLERANCE		<b>UMax</b> 东莞市友贸实业有限公司 <b>conn</b> DONGGUAN UMAXCONN ENTERPRISE LIMITED		TITLE: MINI PCI EXPRESS 5.6MM HEIGHT				
				LINEAR	ANGLES			PART NO. 91304-56-052RXXX				
				X±0.40	X°±	APPD: Jason	MAT'L:	DWG NO. C-91304-56				
				.X±0.30	.X°±	CHKD: Schumi	FINISH:		UNITS	SCALE	SHEET	REV
0	-----	Lei Songping	Jun,06,2019	.XX±0.20	.XX°±	DRWN: Lei Songping	Q'TY:		MM	1 : 1	2 OF 7	0
REV	ECN NO.	NAME	DATE	.XXX±0.15	.XXX°±	CUSTOMER						

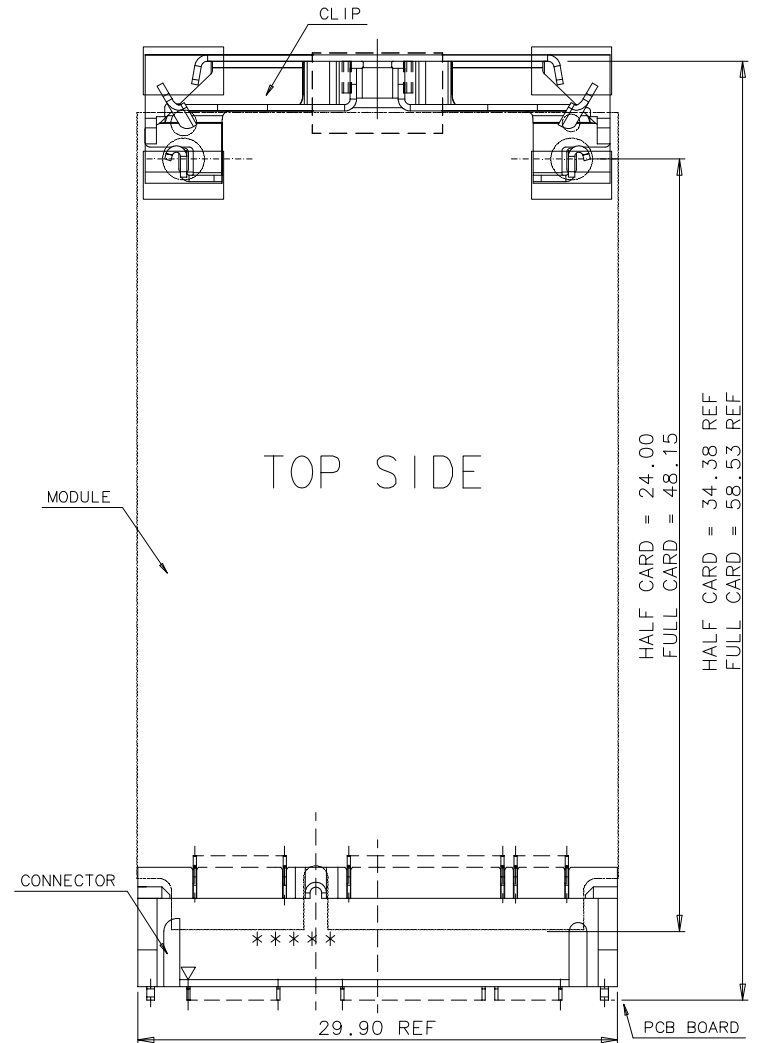


⑥	CAP	1	THERMOPLASTIC	UL94V-0, IVORY COLOR(IN ORDER TO PICK-UP, TAKE AWAY AFTER ASSEMBLY)
⑤	CLIP(2)	1	STAINLESS STEEL	Pd PLATING OVER SOLDER PAD AREA
④	CLIP(1)	1	STAINLESS STEEL	NO PLATING
③	BOARD LOCK	2	COPPER ALLOY	NICKEL UNDER PLATING MATTE TIN PLATING OVER ALL
②	CONTACT	52	COPPER ALLOY	NICKEL UNDER PLATING, GOLD FLASH AT TAIL AREA GOLD PLATING OR GOLD FLASH AT CONTACT AREA
①	HOUSING	1	THERMOPLASTIC	UL94V-0, IVORY COLOR
ITEM	DESCRIPTION	Q'TY	MATERIAL	TREATMENT

				TOLERANCE		<b>UMax</b> 东莞市友贸实业有限公司 <b>conn</b> DONGGUAN UMAXCONN ENTERPRISE LIMITED		TITLE: MINI PCI EXPRESS 5.6MM HEIGHT				
				LINEAR	ANGLES			PART NO. 91304-56-052RXXX				
				X±0.40	X°±	APPD:	Jason	MAT'L:	DWG NO. C-91304-56			
				.X±0.30	.X°±	CHKD:	Schumi	FINISH:	UNITS	SCALE	SHEET	REV
0	-----	Lei Songping	Jun,06,2019	.XX±0.20	.XX°±	DRWN:	Lei Songping	Q'TY:	MM	1 : 1	3 OF 7	0
REV	ECN NO.	NAME	DATE	.XXX±0.15	.XXX°±							



SIDE BY SIDE LAYOUT FOR ASSEMBLY(CONNECTOR+CLIP+MODULE CARD+P.C.B)



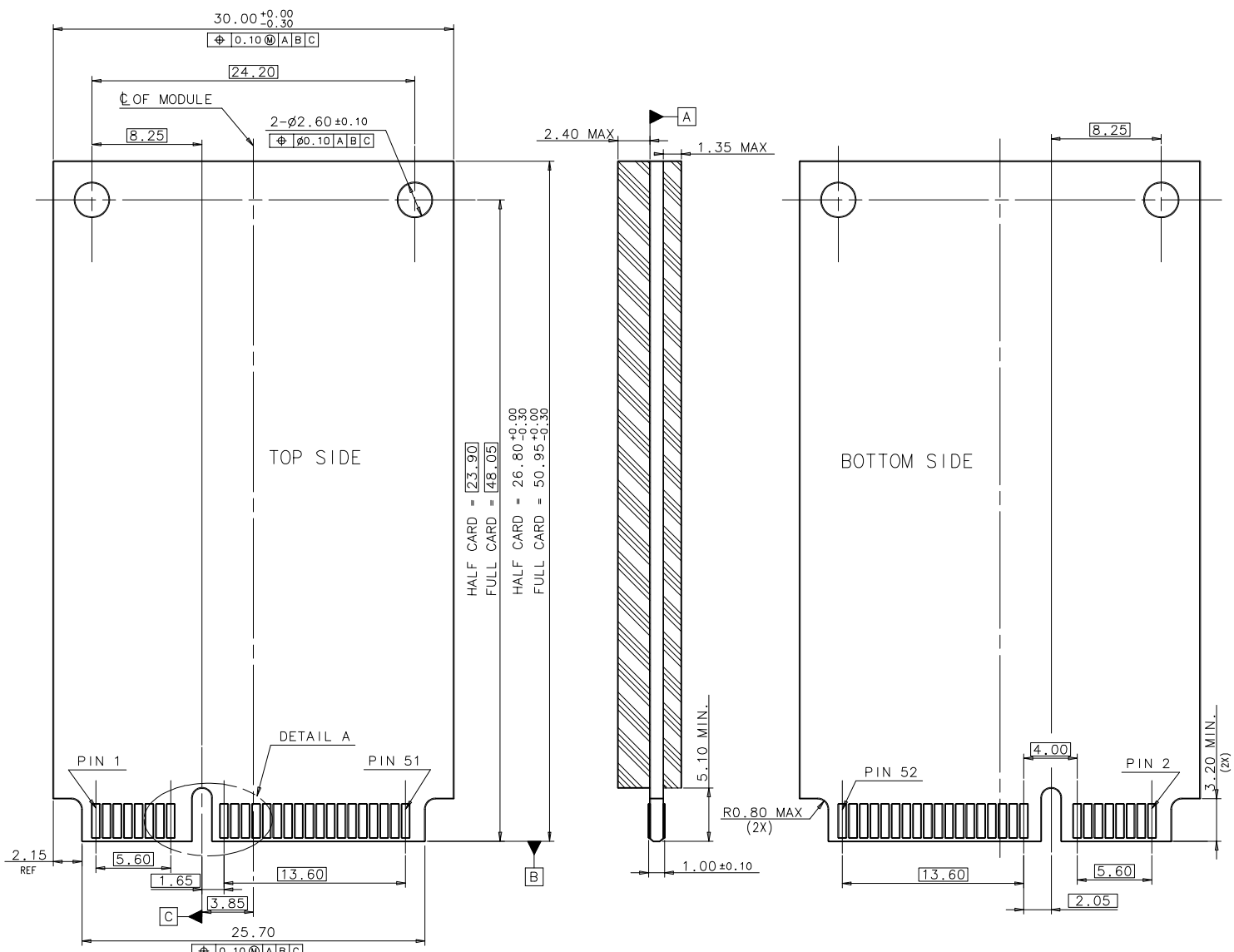
SINGLE LAYOUT FOR ASSEMBLY(CONNECTOR+CLIP+MODULE CARD+P.C.B)

0	-----	Lei Songping	Jun,06,2019
REV	ECN NO.	NAME	DATE

TOLERANCE	
LINEAR	ANGLES
X±0.40	X°±
.X±0.30	.X°±
.XX±0.20	.XX°±
.XXX±0.15	.XXX°±

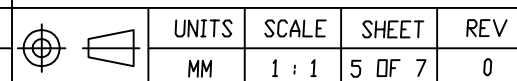
<b>UMax conn</b> 东莞市友贸实业有限公司 DONGGUAN UMAXCONN ENTERPRISE LIMITED	
APPD: Jason	MAT'L:
CHKD: Schumi	FINISH:
DRWN: Lei Songping	Q'TY:

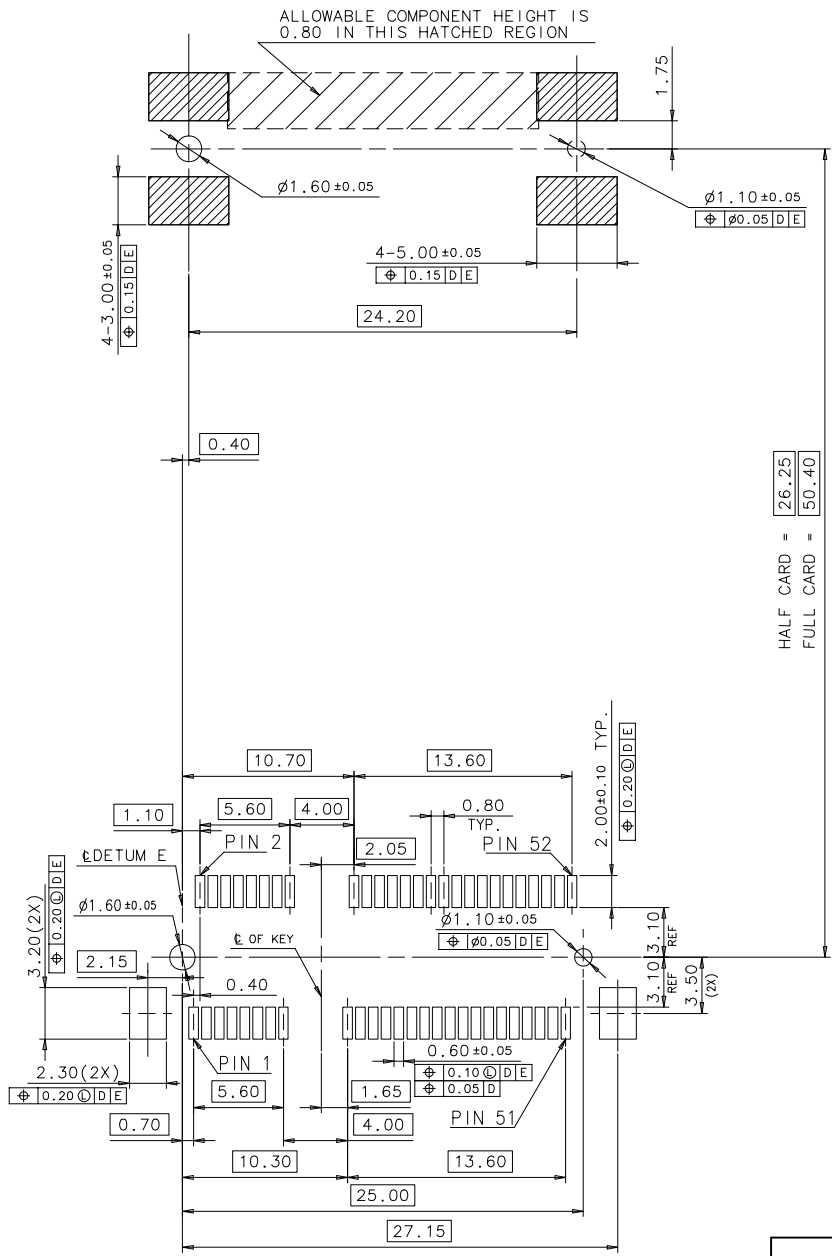
TITLE: MINI PCI EXPRESS 5.6MM HEIGHT			
PART NO. 91304-56-052RXXX			
DWG NO. C-91304-56			
		UNITS	SCALE
		MM	1 : 1
		SHEET	REV
		4 OF 7	0



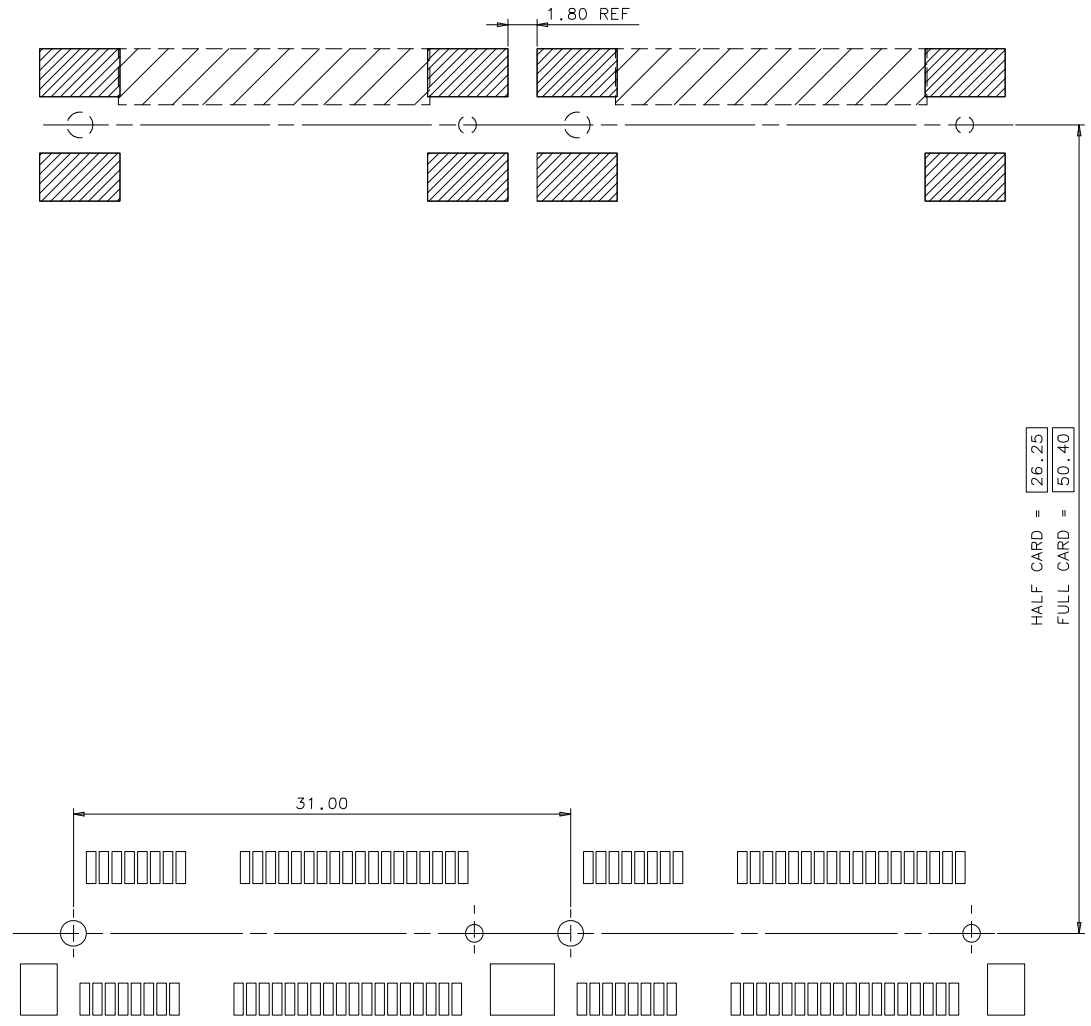
MINI PCI EXPRESS MODULE BOARD

				TOLERANCE		<b>U</b> <b>Max</b> 东莞市友贸实业有限公司 <b>conn</b> DONGGUAN UMAXCONN ENTERPRISE LIMITED		TITLE: MINI PCI EXPRESS 5.6MM HEIGHT			
				LINEAR	ANGLES			PART NO. 91304-56-052RXXX			
				X±0.40	X°±	APPD: Jason		DWG NO. C-91304-56			
				.X±0.30	.X°±	CHKD: Schumi		UNITS	SCALE	SHEET	REV
0	-----	Lei Songping	Jun,06,2019	.XX±0.20	.XX°±	FINISH:		MM	1 : 1	5 OF 7	0
REV	ECN NO.	NAME	DATE	.XXX±0.15	.XXX°±	DRWN: Lei Songping		Q'TY:			





RECOMMENDED PCB LAYOUT  
\*DATUM D IS THE TOP SURFACE OF PCB



RECOMMENDED PCB LAYOUT (SIDE BY SIDE)

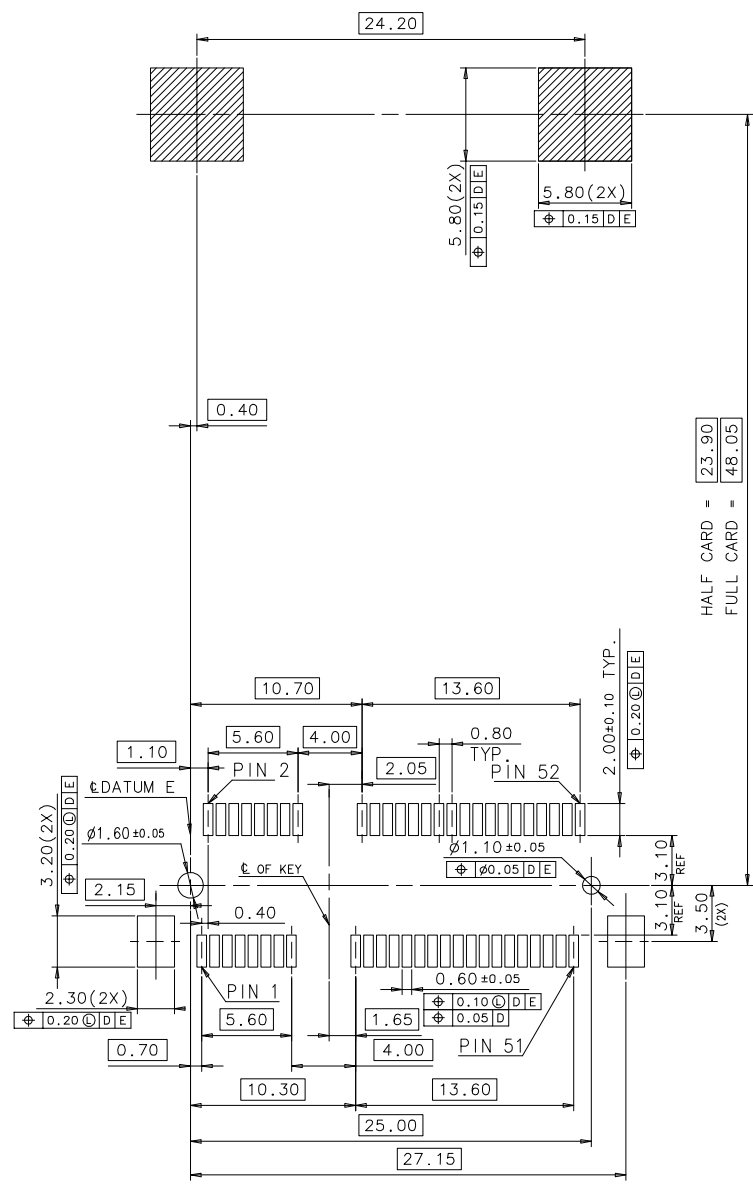
TOLERANCE	
LINEAR	ANGLES
X $\pm$ 0.40	X $^{\circ}$ $\pm$
.X $\pm$ 0.30	.X $^{\circ}$ $\pm$
.0	.XX $^{\circ}$ $\pm$
.XXX $\pm$ 0.15	.XXX $^{\circ}$ $\pm$

<b>UMax</b> 东莞市友贸实业有限公司 <b>conn</b> DONGGUAN UMAXCONN ENTERPRISE LIMITED		APPD: Jason	MAT'L:
		CHKD: Schumi	FINISH:
DRWN: Lei Songping	Q'TY:		

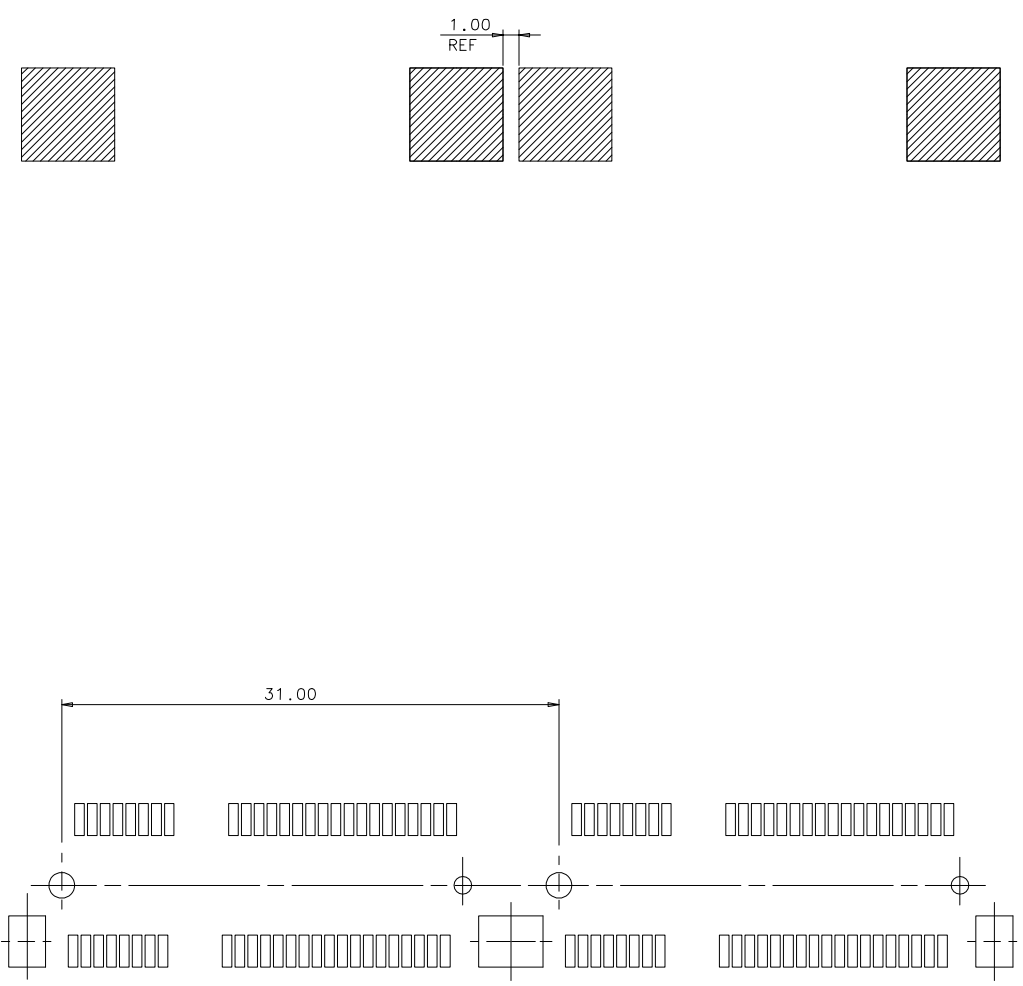
TITLE: MINI PCI EXPRESS 5.6MM HEIGHT					
PART NO. 91304-56-052RXXX					
DWG NO. C-91304-56					
		UNITS	SCALE	SHEET	REV
		MM	1 : 1	6 OF 7	0

REV	ECN NO.	NAME	DATE
0	-----	Lei Songping	Jun,06,2019

HALF CARD = 26.25  
FULL CARD = 50.40



HALF CARD = 23.90  
 FULL CARD = 48.05



RECOMMENFED SIDE BY SIDE P.C.B LAYOUT(WITH NUT)

\*DATUM D IS THE TOP SURFACE OF PCB  
 RECOMMENDED P.C.B LAYOUT(WITH NUT)

REV	ECN NO.	NAME	DATE
0	-----	Lei Songping	Jun,06,2019

TOLERANCE	
LINEAR	ANGLES
X±0.40	X°±
.X±0.30	.X°±
.XX±0.20	.XX°±
.XXX±0.15	.XXX°±

**UMax conn** 东莞市友贸实业有限公司  
 DONGGUAN UMAXCONN ENTERPRISE LIMITED

APPD: Jason    MAT'L:  
 CHKD: Schumi    FINISH:  
 DRWN: Lei Songping    Q'TY:

TITLE: MINI PCI EXPRESS 5.6MM HEIGHT

PART NO. 91304-56-052RXXX  
 DWG NO. C-91304-56

UNITS	SCALE	SHEET	REV
MM	1 : 1	7 OF 7	0