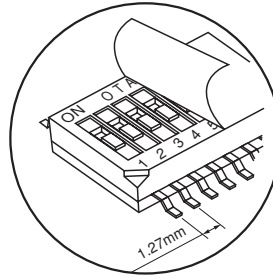


Features

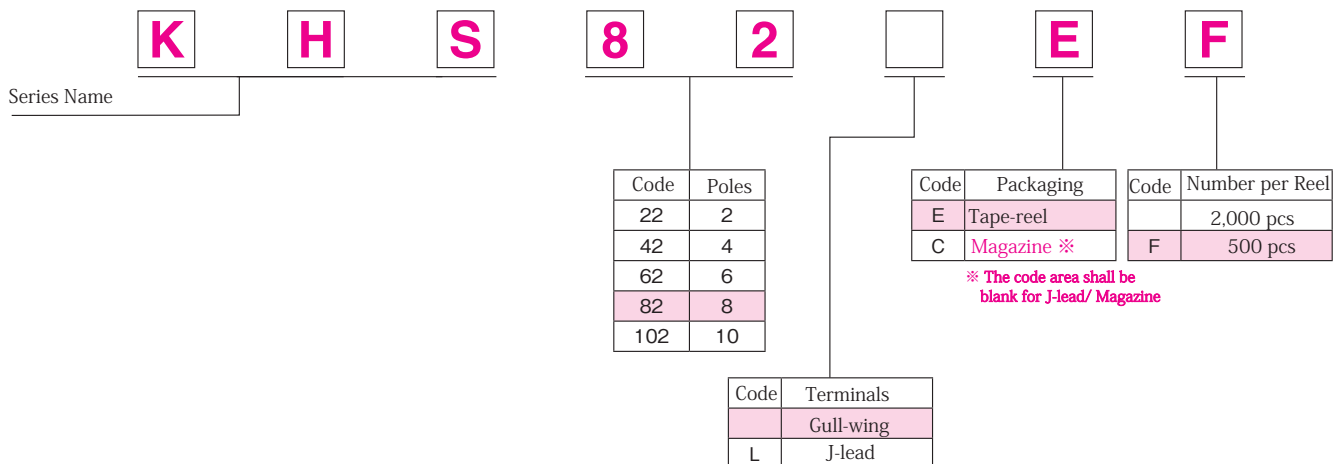
1. The extreme miniaturization of the internal mechanism enables ultra-miniaturization with a half-pitch (P = 1.27 mm).
2. High-density mounting is possible (41.9% of the area compared to our company's 8-pin version).
3. The contact points are standard gold-plated.
4. Two types of terminal shapes are available: gull-wing type and J-lead type.
5. Automated assembly is possible with SMT mounters, and reflow and cleaning (via tape seal) are supported. For automated assembly, tape reels and magazines are also compatible.

Typical Specifications

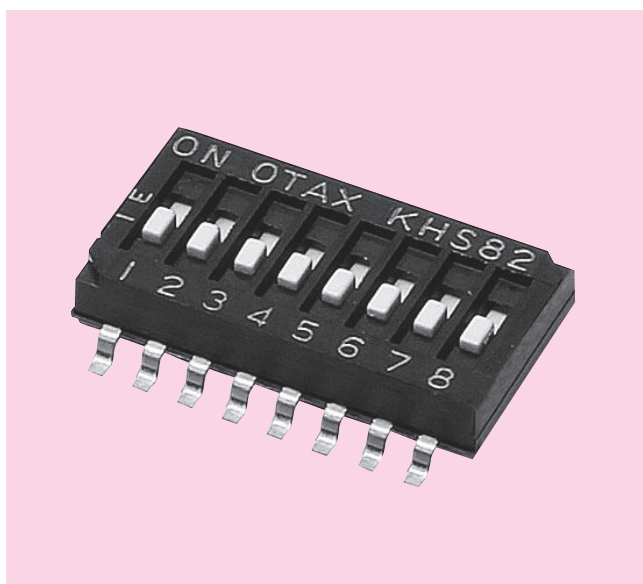
Ratings	DC24V 25mA
Contact Resistance	Max. 100mΩ
Insulation Withstand Voltage	AC300V 1 minute
Insulation Resistance	Min. 1MΩ
Electrical Life	1000 cycles
Operating Temperature Range	-30 °C - +85°C
Storage Temperature Range	-30 °C - +85°C
Operating Force	4.9N Max
Number of Re-flow Soldering	2



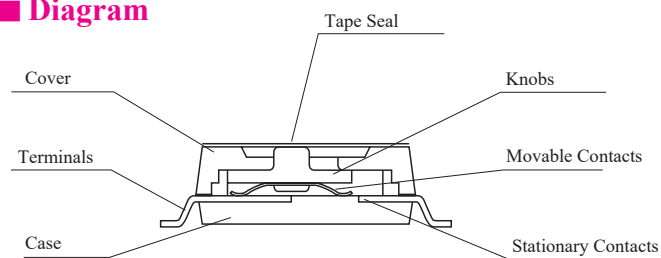
Item Description



※ Contact us for customization except for those described above.



Diagram

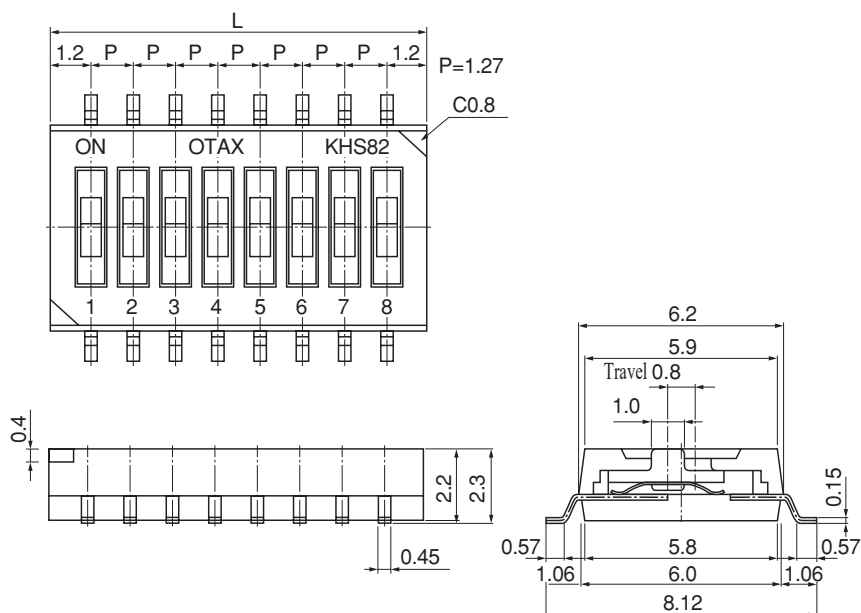


Materials

Parts	Materials	Finish
Cover	PPS	Black
Knobs	Liquid Crystal Polymer	White
Case	PPS	Black
Terminals	Copper Alloy	Gold-flash
Stationary Contacts	Copper Alloy	Gold Plating
Movable Contacts	Copper Alloy	Gold Plating

Dimensions

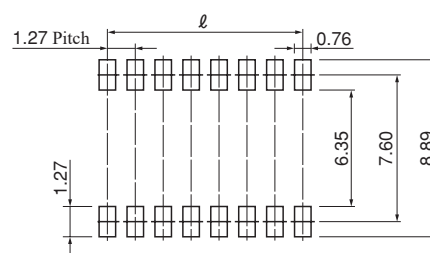
KHS□□



Type Name and Size

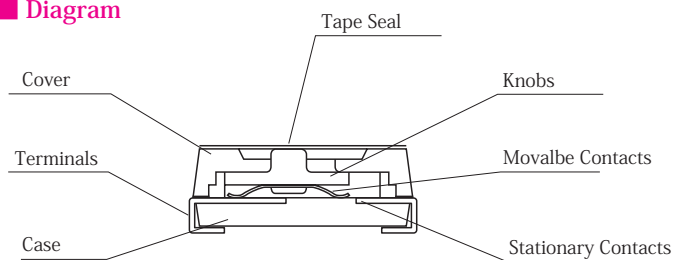
Type Names	Poles	L (mm)	ℓ (mm)
KHS22 □	2	3.67	1.27
KHS42 □	4	6.21	3.81
KHS62 □	6	8.75	6.35
KHS82 □	8	11.29	8.89
KHS102 □	10	13.83	11.43

Dimensions of Lands





Diagram

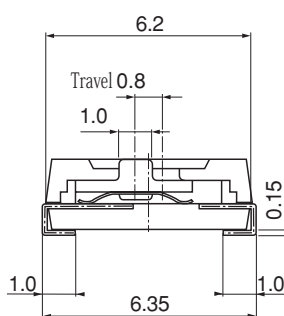
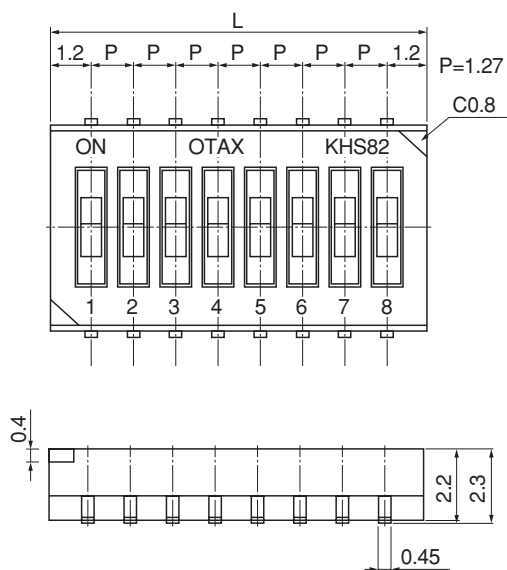


Materials

Parts Name	Materials	Finish
Cover	PPS	Black
Knobs	Liquid Crystal Polymer	White
Case	PPS	Black
Terminals	Copper Alloy	Gold-flash
Stationary Contacts	Copper Alloy	Gold Plating
Movable Contacts	Copper Alloy	Gold Plating

Dimensions

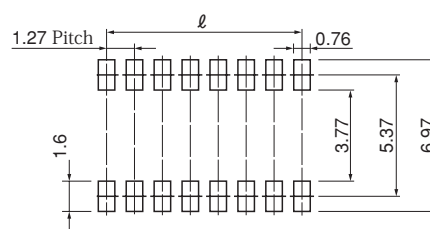
KHS□□L



Type Names and Size

Type Name	Poles	L (mm)	ℓ (mm)
KHS22L □	2	3.67	1.27
KHS42L □	4	6.21	3.81
KHS62L □	6	8.75	6.35
KHS82L □	8	11.29	8.89
KHS102L □	10	13.83	11.43

Dimensions of Lands

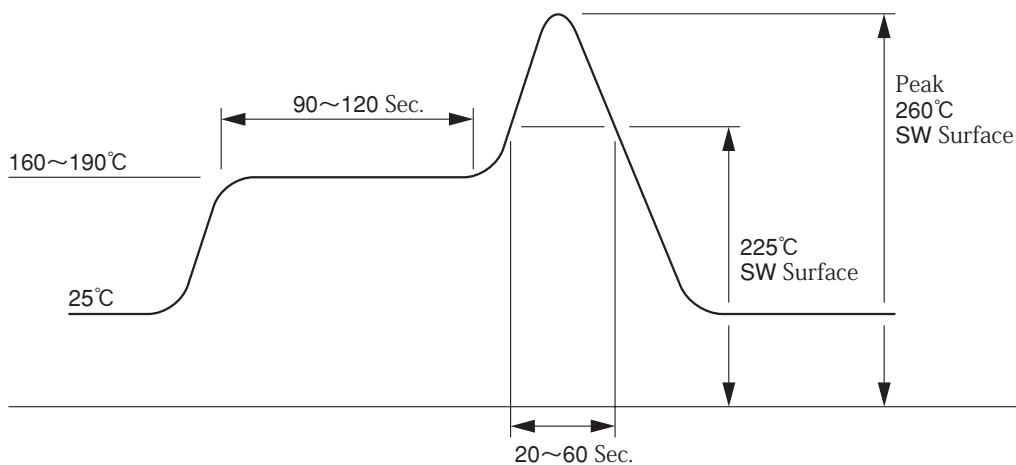


About Soldering

● Soldering Conditions

Hand Soldering	Tip Temperature Max. 320°C 4 ± 1 Sec.
Re-flow Soldering (for SMD)	Pre-heat 160-190°C 90 - 120 sec. Reflow 225°C 20 - 60 Sec. Peak: Max. 260°C

● Reflow Soldering Profile



Precautions

1. Flux cleaning agents can include alcohol-based, petroleum-based, ketone-based, and chlorine-based solvents. However, if you intend to use a terpene-based cleaner, please consult us or confirm it in advance.
2. For reflow soldering, the process may vary depending on the dimensions and assembly density of the printed circuit board. Please contact our distributors or contact us directly for further assistance.

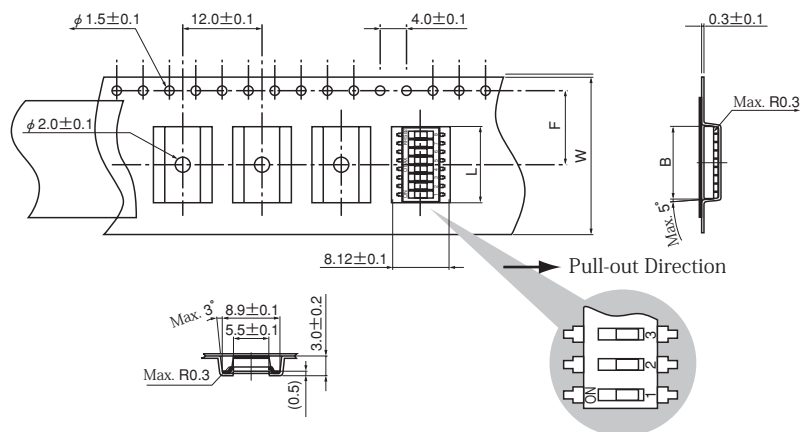
Number of Pieces in a Package

Poles	Number of pieces per a magazine	Number of pieces per a carton
2	125 pcs	12,500 pcs
4	70 pcs	7,000 pcs
6	50 pcs	5,000 pcs
8	40 pcs	4,000 pcs
10	30 pcs	3,000 pcs

※ Number of magazines per one carton are 100.

About Tape-reel Package

■ KHS□□E□ (Gull-wing Type)

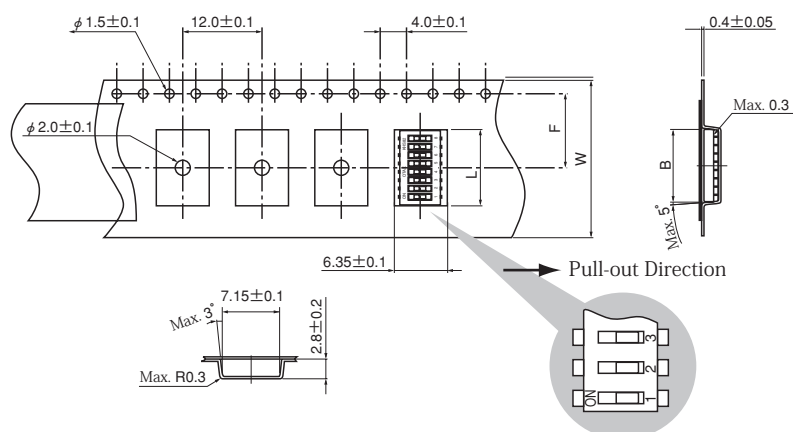


Poles	W	F	B	L
2P	16.0 \pm 0.3	7.5 \pm 0.1	4.45 \pm 0.1	3.67 \pm 0.5
4P			7.0 \pm 0.1	6.21 \pm 0.5
6P			9.55 \pm 0.1	8.75 \pm 0.5
8P	24.0 \pm 0.3	11.5 \pm 0.1	12.1 \pm 0.1	11.29 \pm 0.5
10P			14.6 \pm 0.1	13.83 \pm 0.5

Applied Standard

JIS C 0806
TB0804 ~ TB2420
EIA-481-A
16, 24mm Embossed Tape

■ KHS□□LE□ (J-lead Type)



Poles	W	F	B	L
2P	16.0 \pm 0.3	7.5 \pm 0.1	4.45 \pm 0.1	3.67 \pm 0.5
4P			7.0 \pm 0.1	6.21 \pm 0.5
6P			9.55 \pm 0.1	8.75 \pm 0.5
8P	24.0 \pm 0.3	11.5 \pm 0.1	12.1 \pm 0.1	11.29 \pm 0.5
10P			14.6 \pm 0.1	13.83 \pm 0.5

Applied Standard

JIS C 0806
TB0804 ~ TB2420
EIA-481-A
16, 24mm Embossed Tape