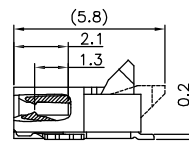
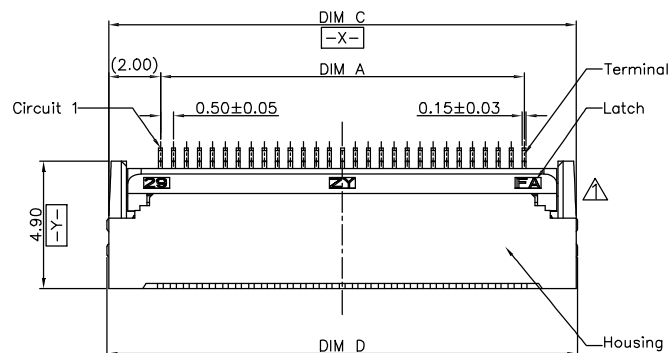
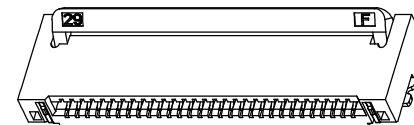


G010

SECTION A-A
SCALE 1:1

Note:

1. Material:

1.1 Housing: thermoplastic high temp.UL94V-0;
Color: natural.1.2 Latch: thermoplastic high temp.UL94V-0;
Color: black.

1.3 Terminal: copper alloy

1.4 Fitting Nail: copper alloy

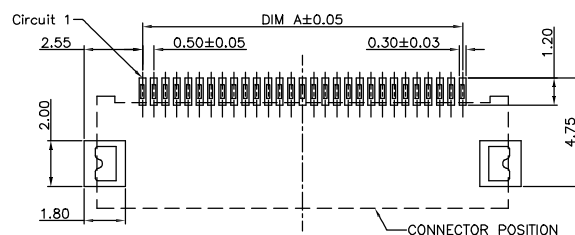
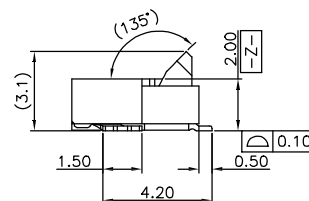
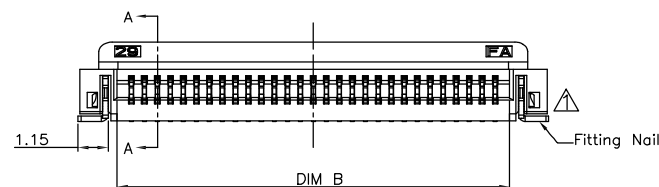
2. Finish:

2.1 Terminal:

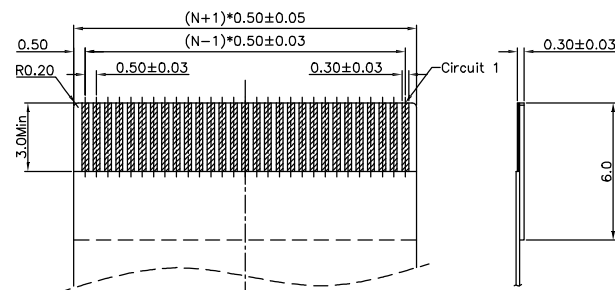
Underplating: Au/matt Tin overall.

2.2 Fitting Nail:

Underplating: matt Tin overall.



RECOMMENDED P.C.B PATTERN LAYOUT



RECOMMENDED FPC/FFC DIMENSION

PART NO. LEGEND:

F2DXXU-A1X1-EC

E:H=2.0mm

T:CONTACT:TIN PLATING
G:CONTACT:GOLD PLATING

1:PULL:LCP BLACK

A:HOUSING:LCP WHITE

U:SMT

XX:NO. OF POSITIONS

D:Easy-on Conn RA SMT TYPE

▲ Show The Produced Unmber

▲ 可以生产的Pin数

	60P	29.50	30.60	33.50	33.60
59P	29.00	30.10	33.00	33.10	
58P	28.50	29.60	32.50	32.60	
57P	28.00	29.10	32.00	32.10	
56P	27.50	28.60	31.50	31.60	
55P	27.00	28.10	31.00	31.10	
▲ 54P	26.50	27.60	30.50	30.60	
53P	26.00	27.10	30.00	30.10	
52P	25.50	26.60	29.50	29.60	
51P	25.00	26.10	29.00	29.10	
▲ 50P	24.50	25.60	28.50	28.60	
49P	24.00	25.10	28.00	28.10	
48P	23.50	24.60	27.50	27.60	
47P	23.00	24.10	27.00	27.10	
46P	22.50	23.60	26.50	26.60	
▲ 45P	22.00	23.10	26.00	26.10	
44P	21.50	22.60	25.50	25.60	
43P	21.00	22.10	25.00	25.10	
42P	20.50	21.60	24.50	24.60	
41P	20.00	21.10	24.00	24.10	
▲ 40P	19.50	20.60	23.50	23.60	
39P	19.00	20.10	23.00	23.10	
38P	18.50	19.60	22.50	22.60	
37P	18.00	19.10	22.00	22.10	
▲ 36P	17.50	18.60	21.50	21.60	
35P	17.00	18.10	21.00	21.10	
34P	16.50	17.60	20.50	20.60	
33P	16.00	17.10	20.00	20.10	
▲ 32P	15.50	16.60	19.50	19.60	
31P	15.00	16.10	19.00	19.10	
▲ 30P	14.50	15.60	18.50	18.60	
29P	14.00	15.10	18.00	18.10	
▲ 28P	13.50	14.60	17.50	17.60	
27P	13.00	14.10	17.00	17.10	
▲ 26P	12.50	13.60	16.50	16.60	
25P	12.00	13.10	16.00	16.10	
▲ 24P	11.50	12.60	15.50	15.60	
23P	11.00	12.10	15.00	15.10	
22P	10.50	11.60	14.50	14.60	
21P	10.00	11.10	14.00	14.10	
▲ 20P	9.50	10.60	13.50	13.60	
19P	9.00	10.10	13.00	13.10	
▲ 18P	8.50	9.60	12.50	12.60	
17P	8.00	9.10	12.00	12.10	
▲ 16P	7.50	8.60	11.50	11.60	
15P	7.00	8.10	11.00	11.10	
▲ 14P	6.50	7.60	10.50	10.60	
13P	6.00	7.10	10.00	10.10	
▲ 12P	5.50	6.60	9.50	9.60	
11P	5.00	6.10	9.00	9.10	
▲ 10P	4.50	5.60	8.50	8.60	
9P	4.00	5.10	8.00	8.10	
▲ 8P	3.50	4.60	7.50	7.60	
7P	3.00	4.10	7.00	7.10	
▲ 6P	2.50	3.60	6.50	6.60	
5P	2.00	3.10	6.00	6.10	
▲ 4P	1.50	2.60	5.50	5.60	
PIN	DIM=A	DIM=B	DIM=C	DIM=D	

CHIN-BAN
Electronic TechnologyDRAWING:
Hu yataoCHECKED:
TonyAPPROVAL:
yang jie

GENERAL TOLERANCE

.X:=±0.15 .X*:=±5°

.XX:=±0.10 .XX*:=±3°

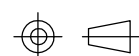
.XXX:=±0.05 .XXX*:=±1°

UNIT: MM

SCALE: 1/1

SHEET: 1/1

PROJECTION:



DESCRIPTION:

0.5mm PITCH FPC H2.0mm

PART NO: F2DXXU-A1X1-EC

DRAWING NO:

REV: 2.0

SIZE: A4