

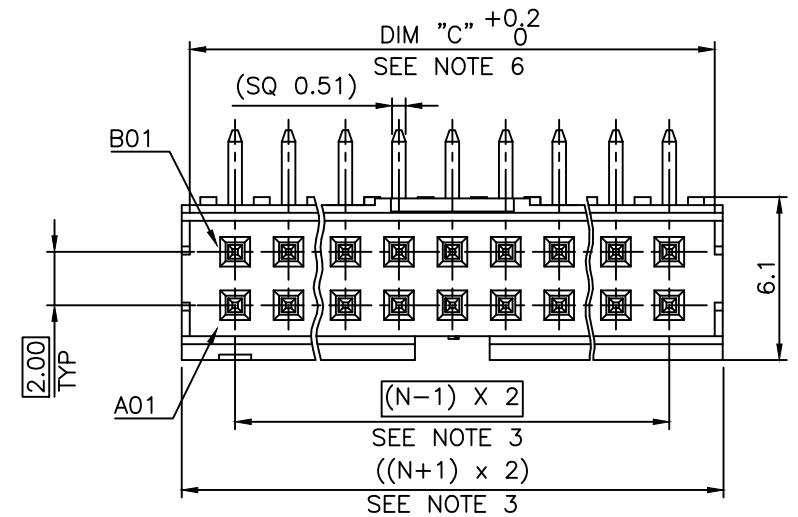
PRODUCT NUMBER  
98464-X61-XX-XXXLF

- PLATING (AS AVAILABLE)
- S = 0.38µm GOLD/GXT ON CONTACT AREA  
2µm MIN MATTE TIN ON TAIL
- G = 0.76µm GOLD/GXT ON CONTACT AREA  
2µm MIN MATTE TIN ON TAIL
- F = GOLD FASH ON CONTACT AREA  
2µm MIN MATTE
- 1.27µm Ni MIN UNDERLAYER
- RoHS COMPATIBLE, SEE NOTE 8
- POLARIZATION, SEE NOTE 7 (AS AVAILABLE)
- PACKAGING OPTIONAL LETTER, SEE NOTE 5 (MAY BE SUBJECT TO TOOLING FEES)
- TOTAL NB OF POSITIONS, 04 TO 50
- COLOR OPTION, SEE NOTE 1 (AS AVAILABLE)

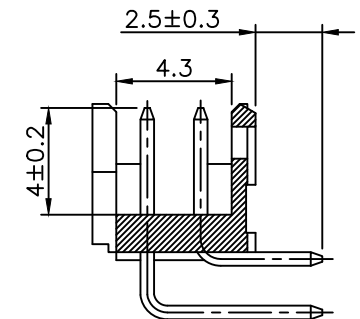
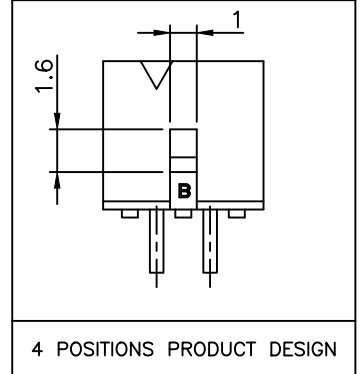
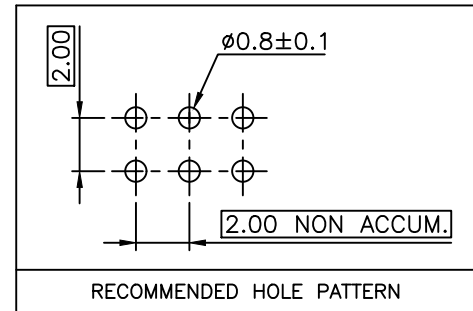
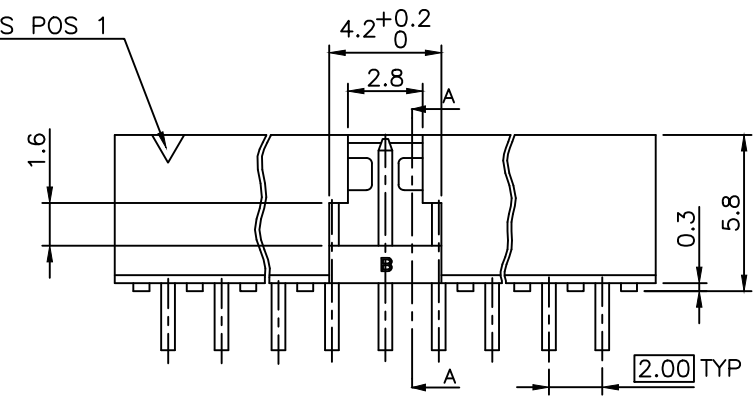
- NOTES:
- MATERIAL HOUSING: HIGH TEMP. THERMOPLASTIC UL 94V-0  
- = STANDARD COLOR CREAM, MEETS GWIT 825°C AND GWFI 960°C  
B = OPTIONAL COLOR BLACK, MEETS GWIT 825°C AND GWFI 960°C
  - MATERIAL TERMINAL: COPPER ALLOY
  - TO DETERMINE DIMENSIONS:  
N = NUMBER OF POSITIONS PER ROW
  - 7N MIN. PIN RETENTION IN EITHER DIRECTION.
  - PACKAGING:  
= STANDARD PACKAGING IN POLYBAGS  
- = POLYBAGS WHEN POLARISATION FEATURE APPLICABLE  
K = TAPE & REEL WITHOUT PICK UP CAP, AS AVAILABLE  
U = TUBE AVAILABLE FROM 06 TO 50 POS  
ERP = PACKAGING IN POLYBAG AND SPECIFIC LABEL FOR DEDICATED CUSTOMER
  - DIM "C" =  $(N \times 2.00) + 1.4$   
EXAMPLE : N = 7  
DIM "C" =  $(7 \times 2.00) + 1.4 = 15.4\text{mm}$
  - FOR POLARIZATION, SPECIFIED PIN  
EXAMPLE: A03= ROW A, POSITION 03 TO OMIT PIN  
OMIT FROM PRODUCT NUMBER IF THIS FEATURE IS NOT APPLICABLE
  - RoHS COMPATIBLE PRODUCT SPECIFICATIONS
    - PLATING:  
- "LF" MEANS THE PRODUCT IS LEAD-FREE, 2µm MINIMUM MATTE TIN OVER 1.27µm MINIMUM NICKEL UNDERPLATE.
    - MANUFACTURING PROCESS COMPATIBILITY  
- THE HOUSING WILL WITHSTAND EXPOSURE TO 260°C ±5°C SOLDER BATH TEMPERATURE FOR 5 SECONDS IN A WAVE SOLDER APPLICATION WITH A 1.6mm MIN THICK CIRCUIT BOARD.  
- ALSO COMPATIBLE WITH REFLOW PROCESS 260°C PEAK TEMPERATURE FOR 30 SECONDES MAX IN A CONVECTION, INFRA-RED OR VAPOR PHASE OR REFLOW OVEN.
    - LABELLING:  
- MEETS PACKAGING SPECS AS PER GS-14-920
    - THIS PRODUCT MEETS EUROPEAN DIRECTIVES AND OTHER COUNTRY REGULATIONS AS DISCRIBED IN GS-47-0004
  - THIS PART SERIES IS NOT INITIALLY INTENDED FOR AUTOMOTIVE APPLICATIONS. ADDITIONAL FEES ARE CHARGEABLE FOR ANY ADDITIONAL QUALIFICATION AND TEST REPORTS PERFORMED OUTSIDE THE SCOPE OF THE STANDARD PRODUCT SPECIFICATIONS.
  - UNLESS OTHERWISE APPROVED BY AMPHENOL, ALL PARTS AND COMPONENTS ARE DESIGNED & BUILT ACCORDING TO AMPHENOL'S SPECIFICATIONS WHICH ARE SUBJECT TO CHANGE WITHOUT NOTICE.




EXTENDED RANGE

- TOOLING FEASIBILITY CONFIRMED
- SAMPLES ON DEMAND
- AVAILABILITY ON DEMAND



INDICATES POS 1



mat'l. code SEE NOTES				surface ISO 1302 ✓		tolerance ISO 406 ISO 1101		projection 		product family MINITEK			
ltr	ecn no	dr	date	tolerances unless otherwise specified					title				
U	F-52814	DDE	24.09.05	angles	linear	x.X ± 0.3			SHROUDED HEADER				
V	F-54492	DDE	25.02.05			x.XX ± 0.15			2.00 RIGHT ANGLE TMT				
W	F-56055	DDE	25.06.10			x.XXX ± 0.05			scale 1:1				
				dr	L.MULIN		04.09.27		dwg no		sheet 1 of 1	size	
R	B-20254	LMU	15.02.16	engr	J.COMPAGNON		04.09.27		98464		A3		
S	F-32710	LMU	19.02.18	chr									
T	F-34292	LMU	22.07.19	appd	J.COMPAGNON		04.09.27						
sheet		revision							type		CUSTOMER	Drawing	
index		sheet											