

## 1. Description

The LGSOT05CLT1G is a dual monolithic voltage suppressor designed to protect components which are connected to data and transmission lines against ESD. It clamps the voltage just above the logic level supply for positive transients, and to a diode drop below ground for negative transients. It can also work as bidirectional suppressor by connecting only pin1 and 2.

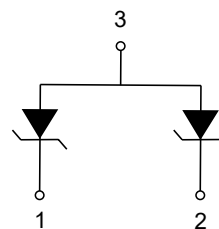
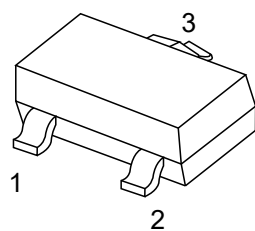
## 2. Features

- 2 Unidirectional Transil functions
- Low leakage current:  $I_R \max < 20 \mu A$  at  $V_{RM}$
- 300W peak pulse power(8/20 $\mu s$ )
- Transient protection for data lines as per IEC61000-4-2(ESD) 15kV(air) 8kV(contact)  
IEC61000-4-5(Lightning) see  $I_{PPM}$  below
- We declare that the material of product compliant with RoHS requirements and Halogen Free.

## 3. Applications

- Computers、Printers
- Communication systems

## 4. Pinning information



**SOT-23**



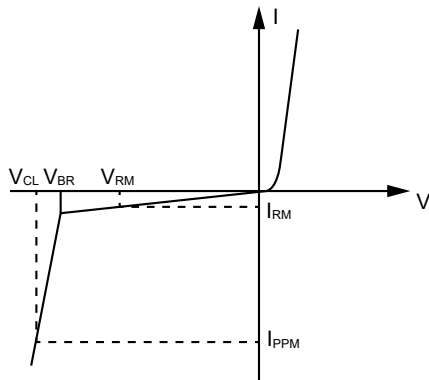
## 5. Absolute Maximum Ratings $T_A = 25^\circ\text{C}$

Parameter	Symbol	Value	Units
IEC 61000-4-2 (ESD)	Contact	$\pm 8$	kV
	Air	$\pm 15$	kV
Peak Pulse Power ( $t_p=8/20\mu\text{s}$ )	$P_{PP}$	300	W
	$T_J$	150	$^\circ\text{C}$
Storage temperature	$T_{STG}$	-55 to 150	$^\circ\text{C}$
Junction Temperature Range	$T_{OP}$	-40 to 125	$^\circ\text{C}$
(10 Second Duration)	$T_L$	260	$^\circ\text{C}$

Notes:

(1) For a surge greater than the maximum values, the diode will fail in short-circuit.

## 6. Electrical Parameters ( $T_A=25^\circ\text{C}$ unless otherwise noted )



Symbol	Parameter
$V_{RM}$	Stand-off voltage
$V_{BR}$	Breakdown voltage
$V_{CL}$	Clamping voltage
$I_{RM}$	Leakage current
$I_{PPM}$	Peak pulse current



7.Electrical Characteristic (T<sub>amb</sub>=25°C)

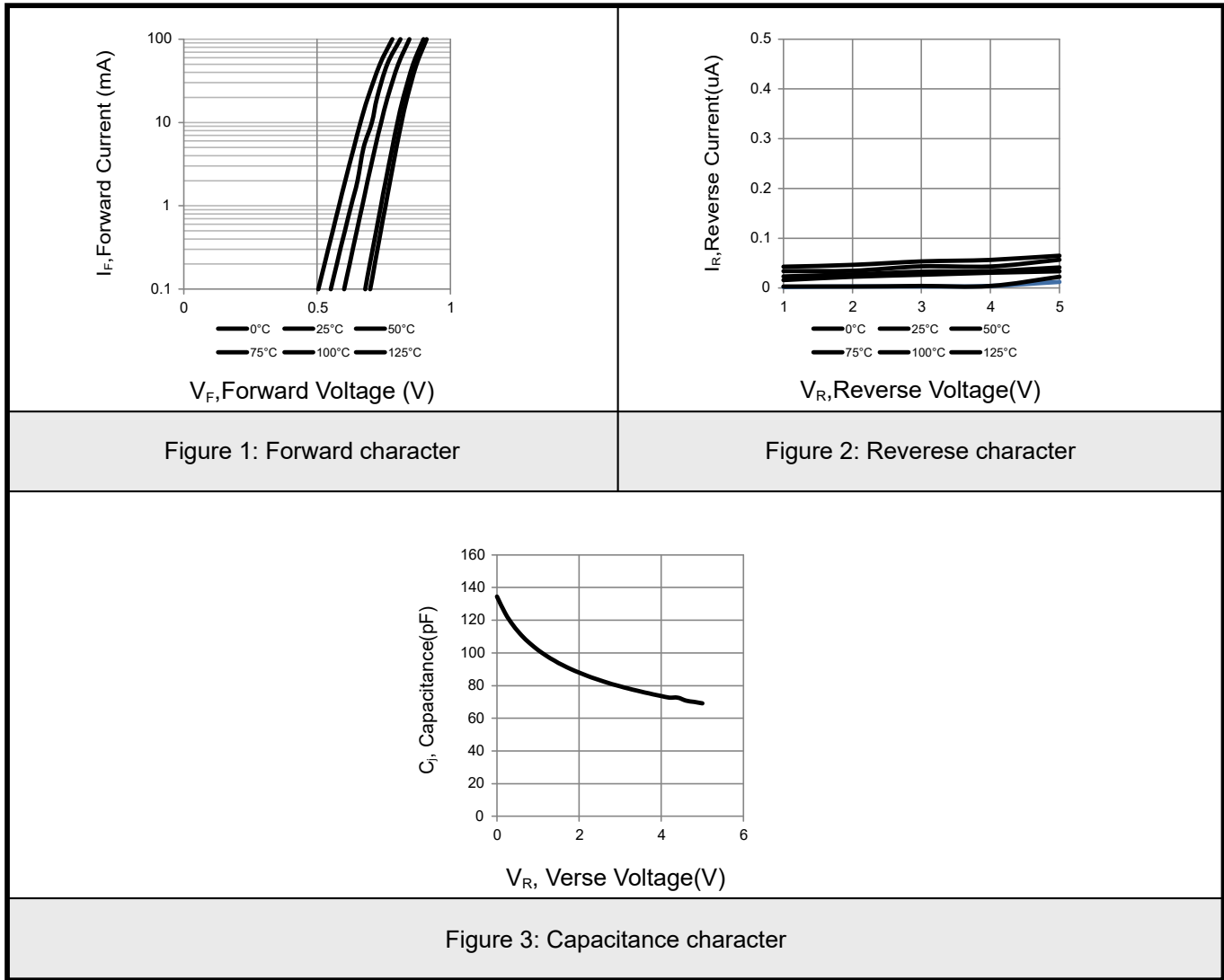
Device	V <sub>RWM</sub> (V)	I <sub>R</sub> (uA) @V <sub>RWM</sub>	V <sub>BR</sub> (V)@I <sub>T</sub> (Note 1)	I <sub>T</sub>	V <sub>C</sub> (V) @I <sub>PP</sub> =1A	V <sub>C</sub> (V) @I <sub>PP</sub> =5A	I <sub>PP</sub> (A) @t <sub>p</sub> =8/20μs	C(pF)
	Max	Max	Min	mA	Max	Max	Max	Max
LGSOT05CLT1G	5	5	6	1	9.8	12.5	17	220

Notes:

1. V<sub>BR</sub> is measured with a pluse test current I<sub>T</sub> at an ambient temperature of 25°C.

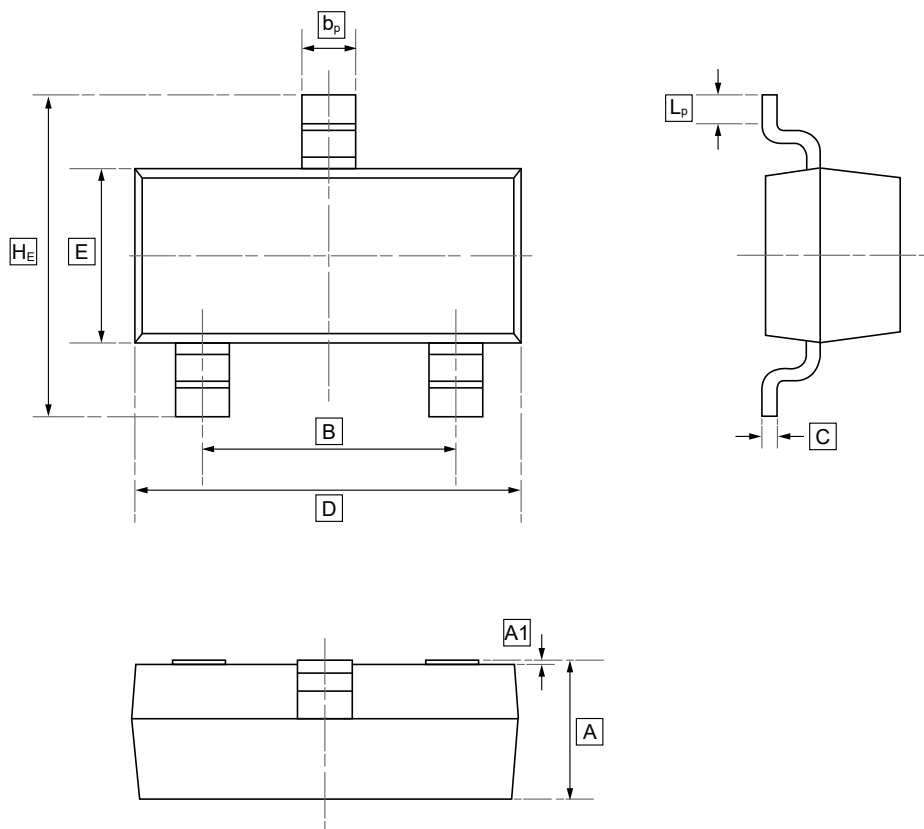


8. Typical characteristic





## 9.SOT-23 Package Outline Dimensions

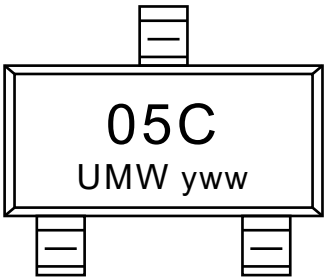


**DIMENSIONS (mm are the original dimensions)**

Symbol	A	B	$b_p$	C	D	E	$H_E$	A1	$L_p$
Min	0.95	1.78	0.35	0.08	2.70	1.20	2.20	0.013	0.20
Max	1.40	2.04	0.50	0.19	3.10	1.65	3.00	0.100	0.50



10.Ordering information



yww: Batch Code

Order Code	Package	Base QTY	Delivery Mode
UMW LGSOT05CLT1G	SOT-23	3000	Tape and reel



## **11.Disclaimer**

---

UMW reserves the right to make changes to all products, specifications. Customers should obtain the latest version of product documentation and verify the completeness and currency of the information before placing an order.

When applying our products, please do not exceed the maximum rated values, as this may affect the reliability of the entire system. Under certain conditions, any semiconductor product may experience faults or failures. Buyers are responsible for adhering to safety standards and implementing safety measures during system design, prototyping, and manufacturing when using our products to prevent potential failure risks that could lead to personal injury or property damage.

Unless explicitly stated in writing, UMW products are not intended for use in medical, life-saving, or life-sustaining applications, nor for any other applications where product failure could result in personal injury or death. If customers use or sell the product for such applications without explicit authorization, they assume all associated risks.

When reselling, applying, or exporting, please comply with export control laws and regulations of China, the United States, the United Kingdom, the European Union, and other relevant countries, regions, and international organizations.

This document and any actions by UMW do not grant any intellectual property rights, whether express or implied, by estoppel or otherwise. The product names and marks mentioned herein may be trademarks of their respective owners.