

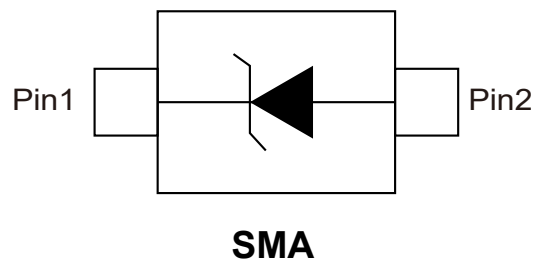
1.Features

- Schottky barrier rectifier
- Guardring protection
- Low forward voltage
- Reverse energy tested
- High current capability
- Extremely low thermal resistance

2.Mechanical Data

- Case: SMA molded plastic body 1111
- Polarity: Color band denotes cathode end
- Mounting position: ANY
- Weight: 0.002 ounces, 0.064 gram

3.Pinning information





4.Maximum Ratings And Electrical Characteristics

Parameter		Symbols	SS 12	SS 13	SS 14	SS 15	SS 16	SS 18	SS 110	SS 115	SS 120	Units
Maximum repetitive peak reverse voltage		V _{RRM}	20	30	40	50	60	80	100	150	200	Volts
Maximum RMS voltage		V _{RMS}	14	21	28	35	42	56	70	105	140	Volts
Maximum DC blocking voltage		V _{DC}	20	30	40	50	60	80	100	150	200	Volts
Maximum average forward rectified current 0.375"(9.5mm) lead length (See Fig.1)		I _(AV)	1									Amps
Peak forward surge current 8.3ms single half sine-wave superimposed on rated load (JEDEC method)		I _{FSM}	30									Amps
Maximum instantaneous forward voltage at 1.0 A(Note 1)		V _F	0.45	0.55		0.7		0.85			0.95	Volts
Maximum instantaneous reverse current at rated DC blocking voltage	T _A =25°C	I _R	0.5						0.2		mA	
	T _A =100°C		10				5		2			
Typical junction capacitance(Note 1)		C _J	110			90						pF
Typical thermal resistance (Note 2)		R _{θJA}	88									°C/W
Junction temperature range		T _J	-50 to 125					-50 to 150				°C
Storage temperature range		T _{STG}	-50 to 150									°C

Ratings at 25 C ambient temperature unless otherwise specified.

Single phase half-wave 60Hz, resistive or inductive load, for capacitive load current derate by 20%

Notes:

1.Measured at 1MHz and applied reverse voltage of 4.0V D.C.

2.P.C.B. mounted with 0.2x0.2"(5.0x5.0mm) copper pad areas.

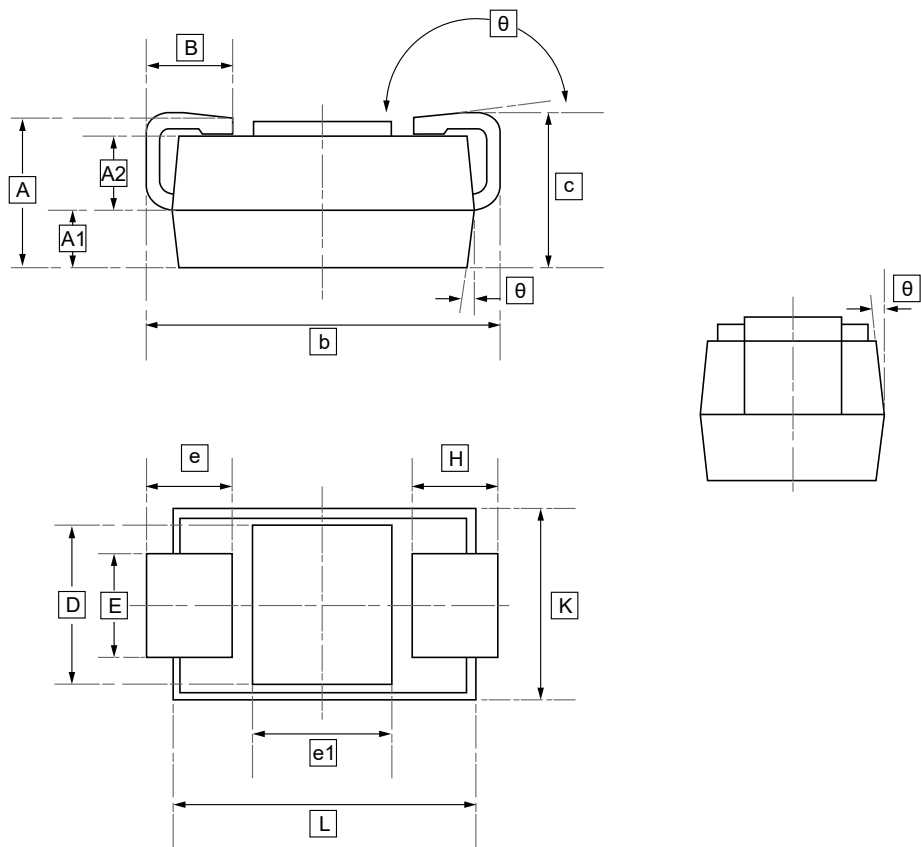


5. Typical characteristic

Figure 1: Forward Derating Curve	Figure 2: Peak Forward Surge Current
Figure 3: Typical Forward characteristics	Figure 4: Typical Reverse Characteristics



6.SMA Package Outline Dimensions



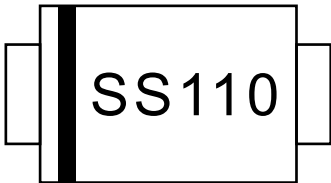
DIMENSIONS (mm are the original dimensions)

Symbol	A	A1	A2	B	b	c	D	E	e1	L	K	θ
Min	1.95	0.77	0.97	1.10	4.95	2.00	2.09	1.38	1.95	4.25	2.60	0°
Max	2.05	0.83	1.03	1.30	5.15	2.20	2.19	1.42	2.05	4.35	2.65	5°

Notes: e-H<0.15mm



7 .Ordering information



Order Code	Package	Base QTY	Delivery Mode
UMW SS12	SMA	2000	Tape and reel
UMW SS13	SMA	2000	Tape and reel
UMW SS14	SMA	2000	Tape and reel
UMW SS15	SMA	2000	Tape and reel
UMW SS16	SMA	2000	Tape and reel
UMW SS18	SMA	2000	Tape and reel
UMW SS110	SMA	2000	Tape and reel
UMW SS115	SMA	2000	Tape and reel
UMW SS120	SMA	2000	Tape and reel



8.Disclaimer

UMW reserves the right to make changes to all products, specifications. Customers should obtain the latest version of product documentation and verify the completeness and currency of the information before placing an order.

When applying our products, please do not exceed the maximum rated values, as this may affect the reliability of the entire system. Under certain conditions, any semiconductor product may experience faults or failures. Buyers are responsible for adhering to safety standards and implementing safety measures during system design, prototyping, and manufacturing when using our products to prevent potential failure risks that could lead to personal injury or property damage.

Unless explicitly stated in writing, UMW products are not intended for use in medical, life-saving, or life-sustaining applications, nor for any other applications where product failure could result in personal injury or death. If customers use or sell the product for such applications without explicit authorization, they assume all associated risks.

When reselling, applying, or exporting, please comply with export control laws and regulations of China, the United States, the United Kingdom, the European Union, and other relevant countries, regions, and international organizations.

This document and any actions by UMW do not grant any intellectual property rights, whether express or implied, by estoppel or otherwise. The product names and marks mentioned herein may be trademarks of their respective owners.