

2 0-09 ARR
FRONT VIEW SHOWN

CLOCKING	COLOR BAND
A	BROWN
B	RED
C	BLUE
D	GREEN

ITEM NUMBER	COMPONENT	MATERIAL	PLATING
1	PLUG BARREL	M - BRASS/ RUTHENIUM OVER ELECTROLESS NICKEL (ROH)	
2	BACKSHELL	BRASS / ELECTROLESS NICKEL	
3	O-RING	FLUOROSILICONE	N/A
4	INSULATOR	POLYETHERIMIDE, GF	N/A
5	CRIMP SLEEVE	COPPER ALLOY	ELECTROLESS NICKEL
6	POWER CONTACTS	COPPER ALLOY	GOLD OVER NICKEL
7	SIGNAL CONTACTS	COPPER ALLOY	GOLD OVER NICKEL

NOTES: UNLESS OTHERWISE SPECIFIED.

1. DIMENSION UNITS: MM [INCH]. INCHES ARE FOR REFERENCE ONLY.

 FOR ADDITIONAL CAVITY LAYOUT INFORMATION, REF CSA-HDX.

3. RECOMMENDED TORQUE FOR BACKSHELL:
(APPLICATION OF THREADLOCKER TO BACKSHELL THREADS IS RECOMMENDED.)
SIZE 0 - 0.5Nm [4.4 in-lbs]
SIZE 1 - 1Nm [8.8 in-lbs]

4. RECOMMENDED CRIMP DIE M22520/5-23. (FOR SIZE 0)
RECOMMENDED CRIMP DIE M22520/5-21. (FOR SIZE 1)
HAND CRIMP TOOL M22520/5-01.

5 CRIMP SLEEVE TO BE SHIPPED LOOSE.

6. CONSULT FACTORY FOR TOOLS AND/OR TERMINATION PROCESS.

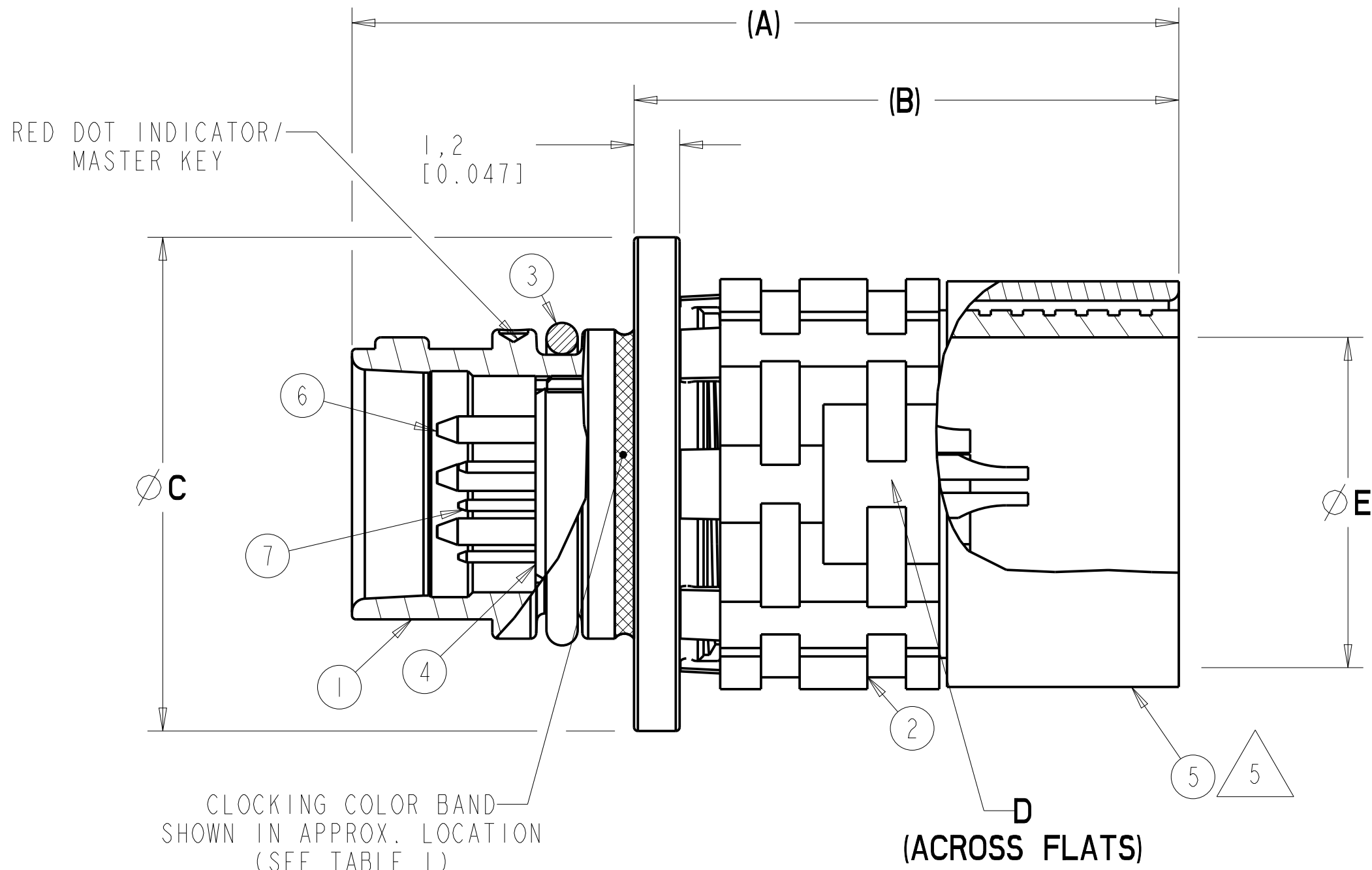
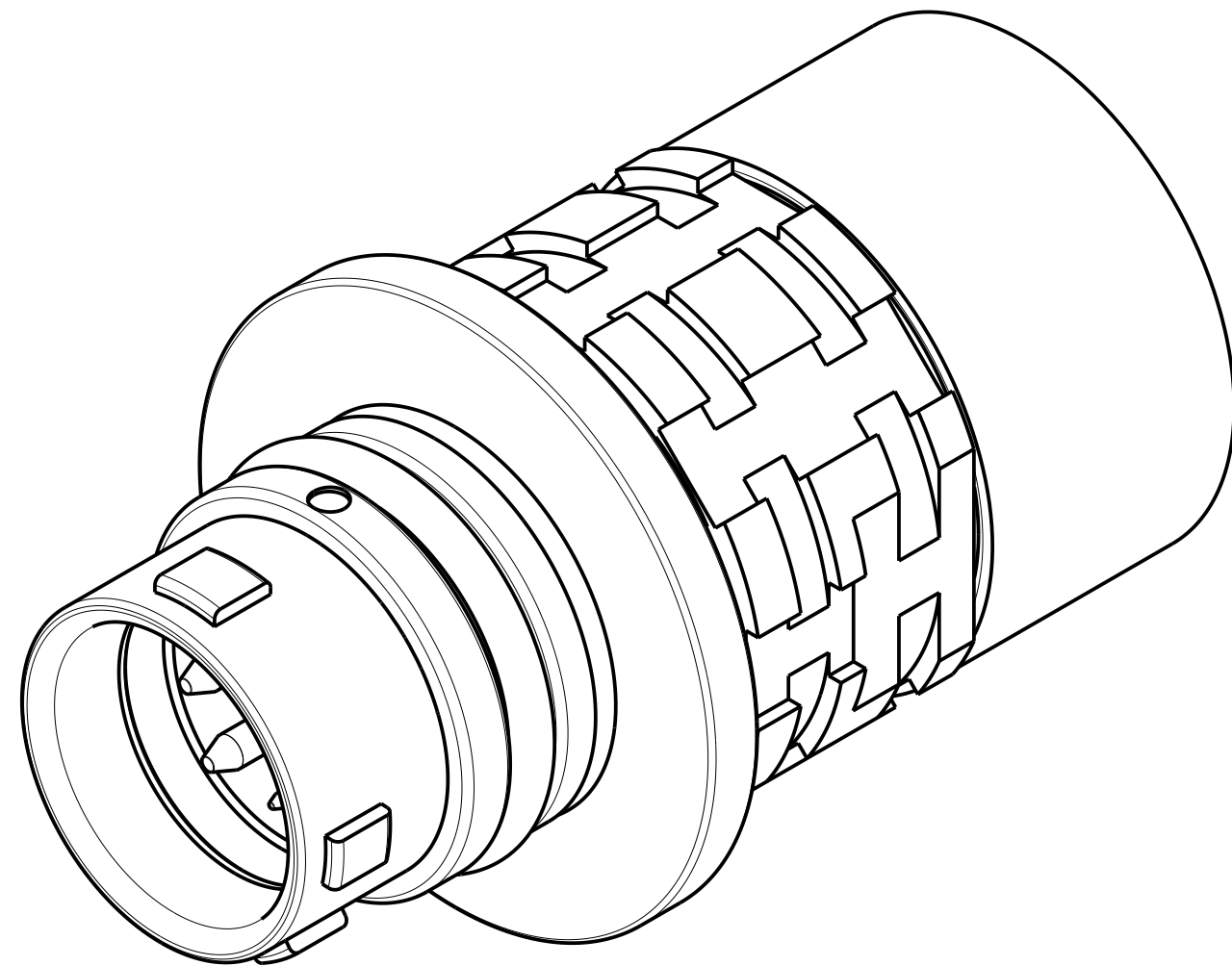


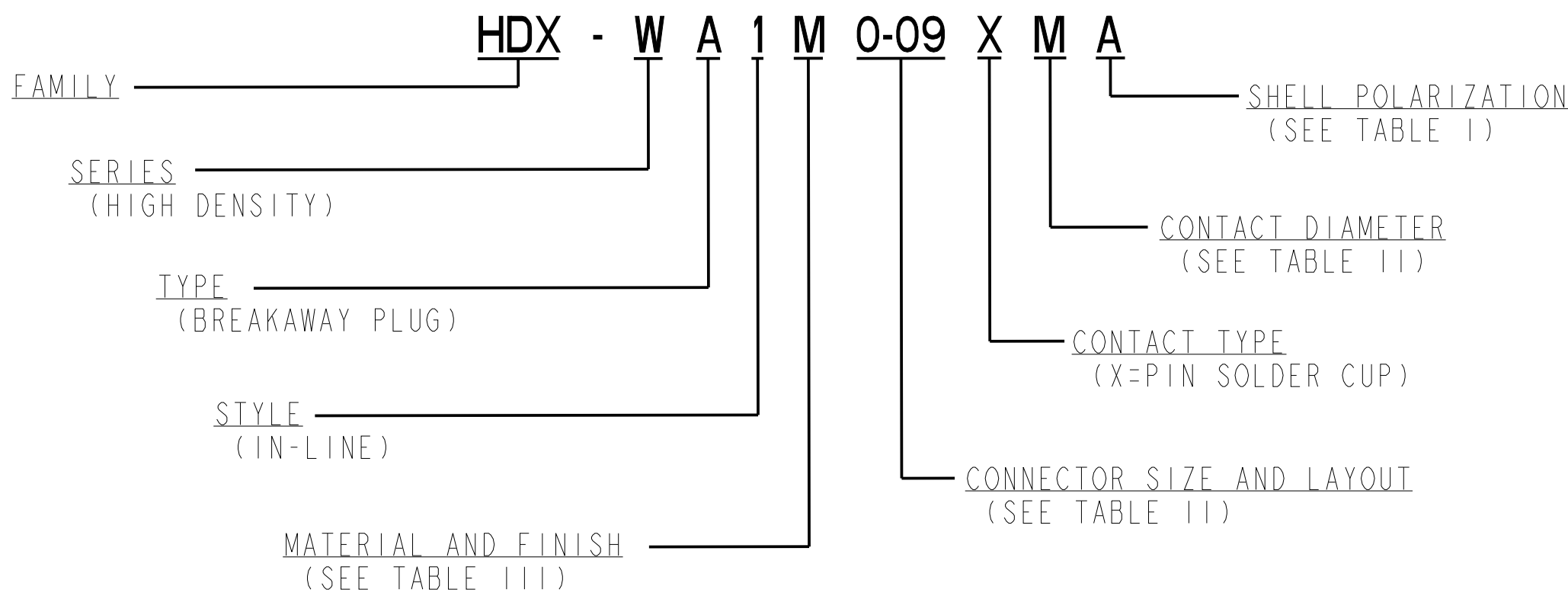
TABLE II - LAYOUT & DIMENSIONS

SIZE - LAYOUT	CONTACT DIAMETER	A	B	ØC	D (ACROSS FLATS)	ØE MAX CABLE
0-09	M - MULTI	21,5 [.846]	14,2 [.559]	12,8 [.504]	10 [.394]	7 [.276]
0-12	M - MULTI					
0-16	B - 0,3mm					
1-20	M - MULTI	25,2 [.992]	18,2 [.717]	14,8 [.583]	12 [.472]	8,5 [.335]
1-27	B - 0,3mm					

PERFORMANCE PROPERTIES	
POWER CONTACTS, 0,7mm	AWG 22 CURRENT RATING 5A (SINGLE CONTACT)
SIGNAL CONTACTS, 0,3mm	AWG 28 CURRENT RATING 1A (SINGLE CONTACT)
INSULATION RESISTANCE	100 M Ω MINIMUM
DWV	NO BREAKDOWN AT OR BELOW 1000 VDC
RATED VOLTAGE	250V
OPERATING TEMPERATURE	-51°C TO +125°C
WATER TIGHTNESS	20m DEPTH FOR 120MIN (IPX8) PER MIL-STD-883C METHOD 512.5, PROCEDURE I TIGHTNESS TO IPX9K PER ISO 20653 2013-02-15
VIBRATION	15g (SINE), 10-2,000HZ, NO DISCONTINUITY>1 μ s EIA-364-28F
SHOCK	50g AMPLITUDE, 1/2 SINE PULSE OF 6ms, NO DISCONTINUITY>1 μ s EIA-364-27C
MECHANICAL DURABILITY	5,000 MATING CYCLES



EXPLANATION OF PART NUMBER



RoHS COMPLIANCE CODE		REMOVE ALL BURRS AND SHARP EDGES (0.13 L 005) MAX. -SURFACE FINISH SHALL BE 1.6 uM (63 uIN) RMS MAX.		SPEC. DIM.	
		VOLUME		KEY CHARACTERISTIC 0	
DRAWN C. HA		DATE 02/18/22		SURFACE AREA	
CHECKED A. ABLOTT		DATE 04/01/22		REF	
APPROVED S. VILLARRUEL		DATE 04/01/22		PART NO. VARIOUS	
UNLESS OTHERWISE SPECIFIED: METRIC -DIMENSIONS ARE IN MM'S AND (INCHES) -DIMENSIONAL LIMITS APPLY BEFORE PLATING. -DIM'S AND TOL'S ARE PER ASME Y14.5M-1994. -DO NOT SCALE DRAWING.		SCALE 8.000		DESCRIPTION CONNECTOR, PLUG, ELECTRICAL HDX, INLINE BREAKAWAY PIN CONTACTS, MASTER ASSY	
CAGE CODE 71468		SIZE D C		SHEET 1 / 1	
3RD ANGLE PROJECTION 		028029Y0101		REV -	