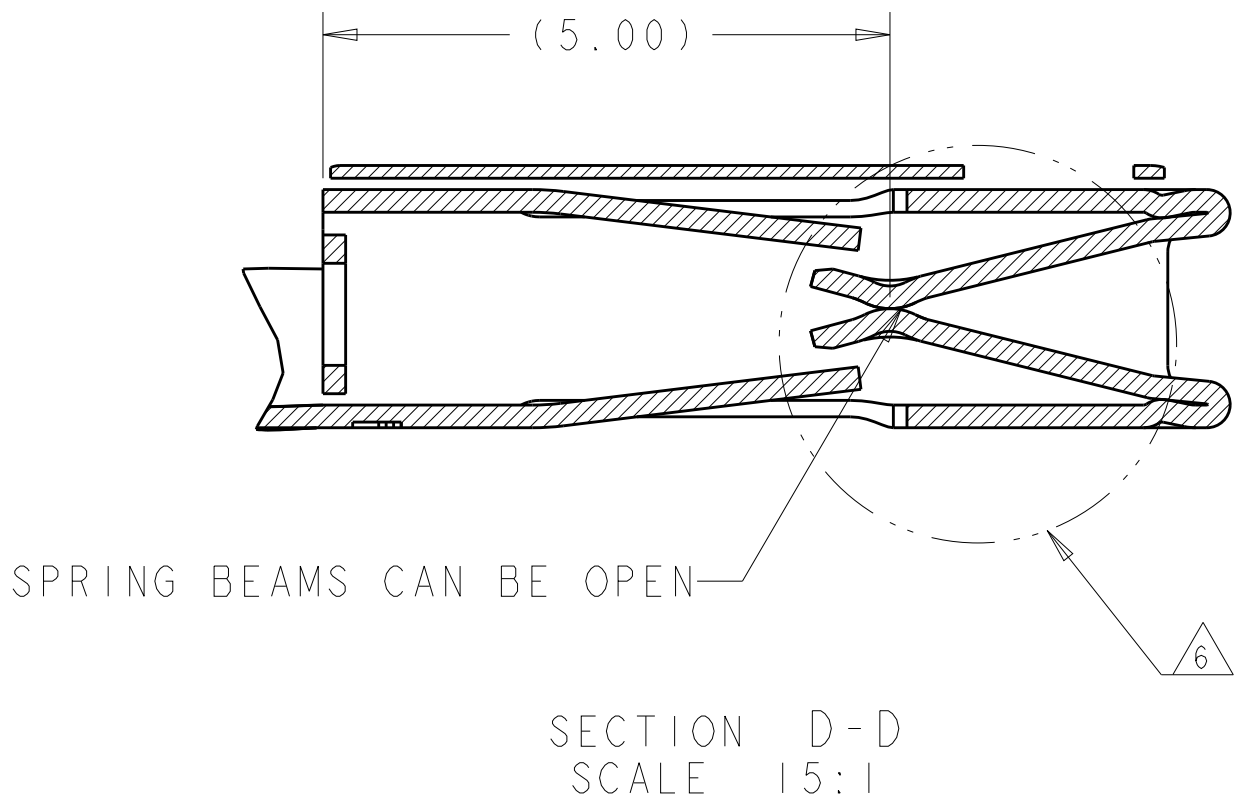
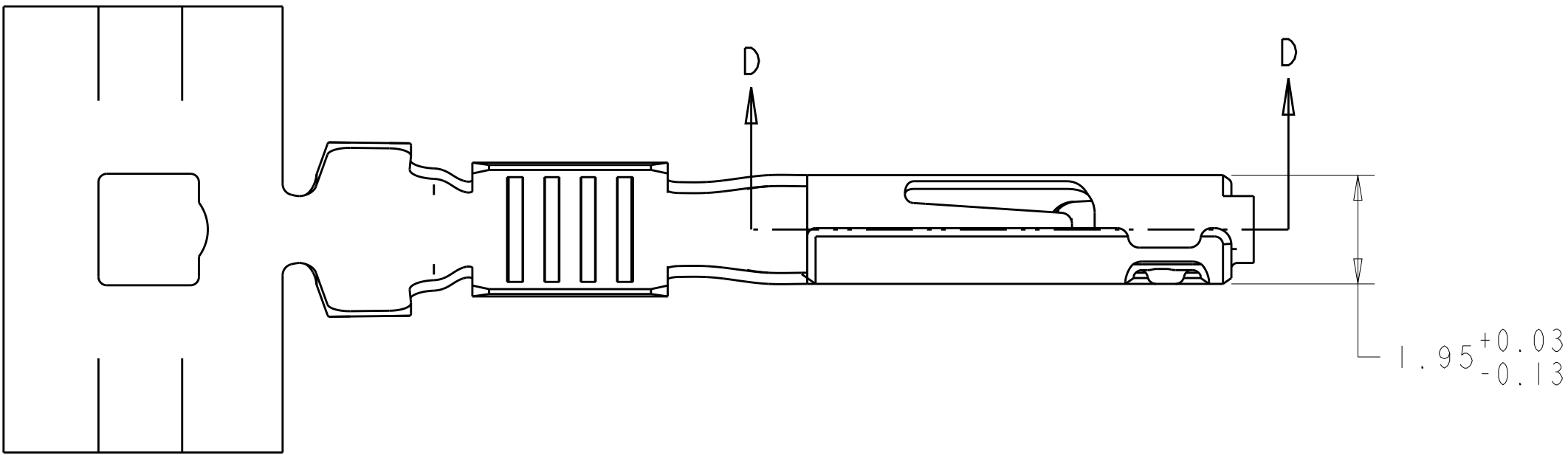
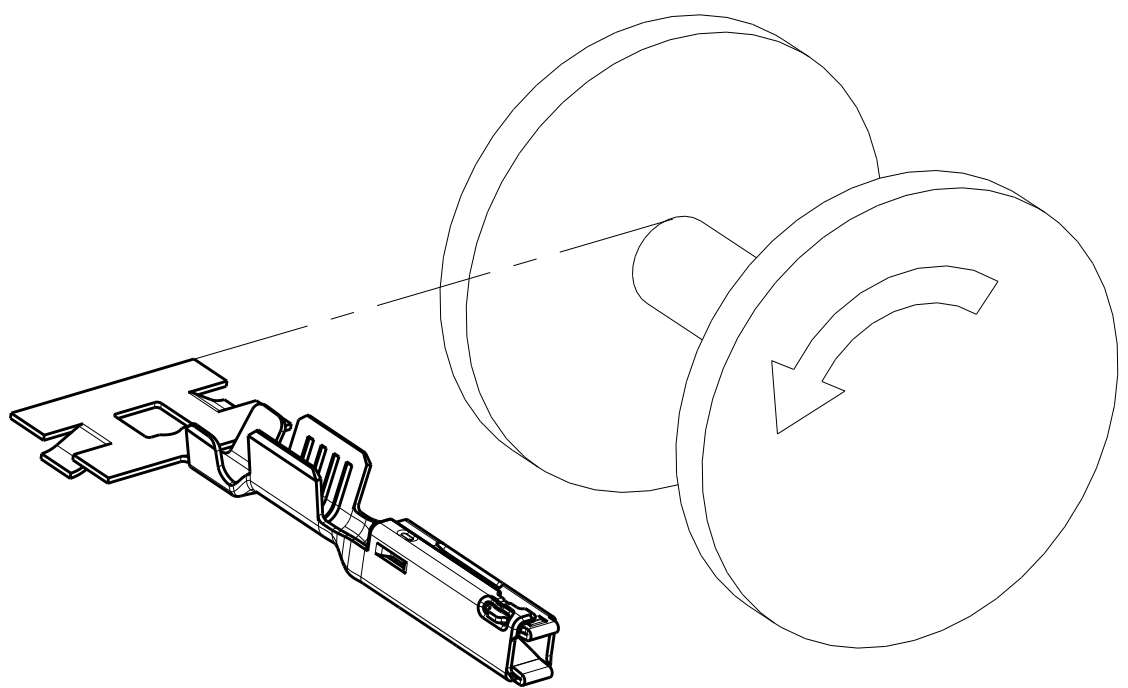
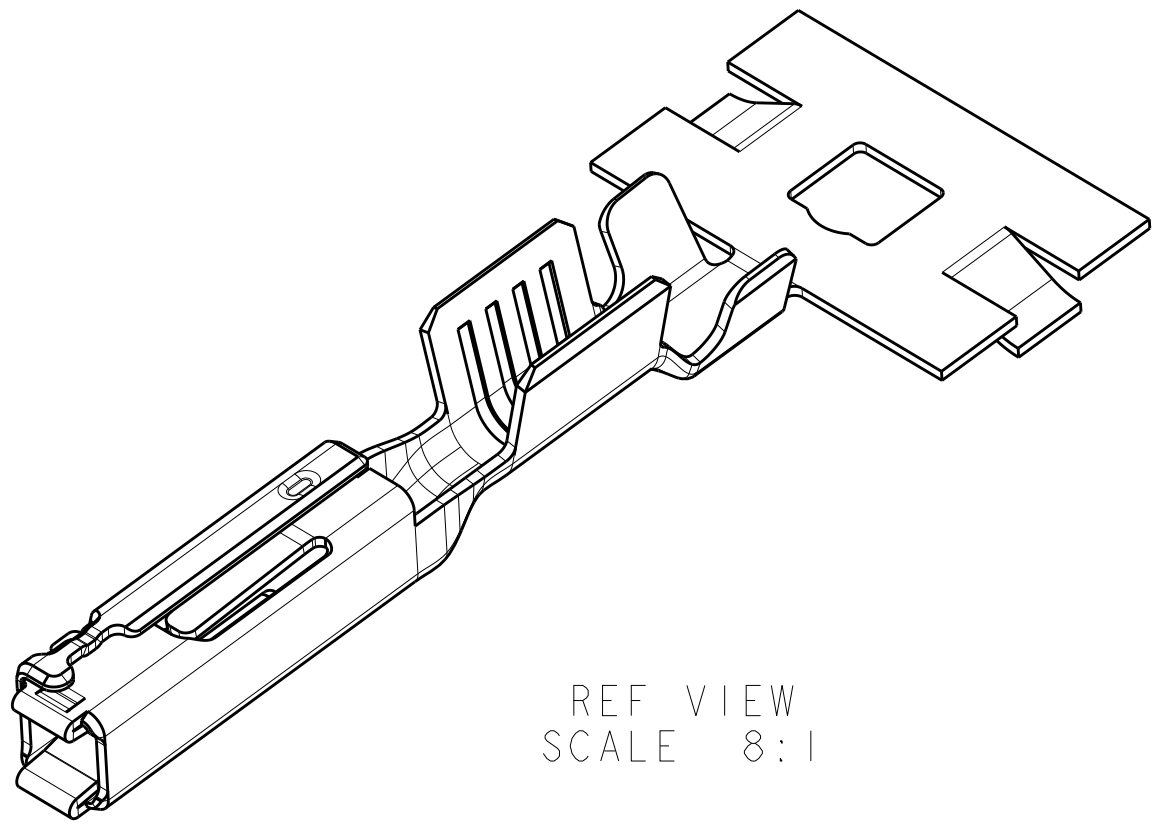
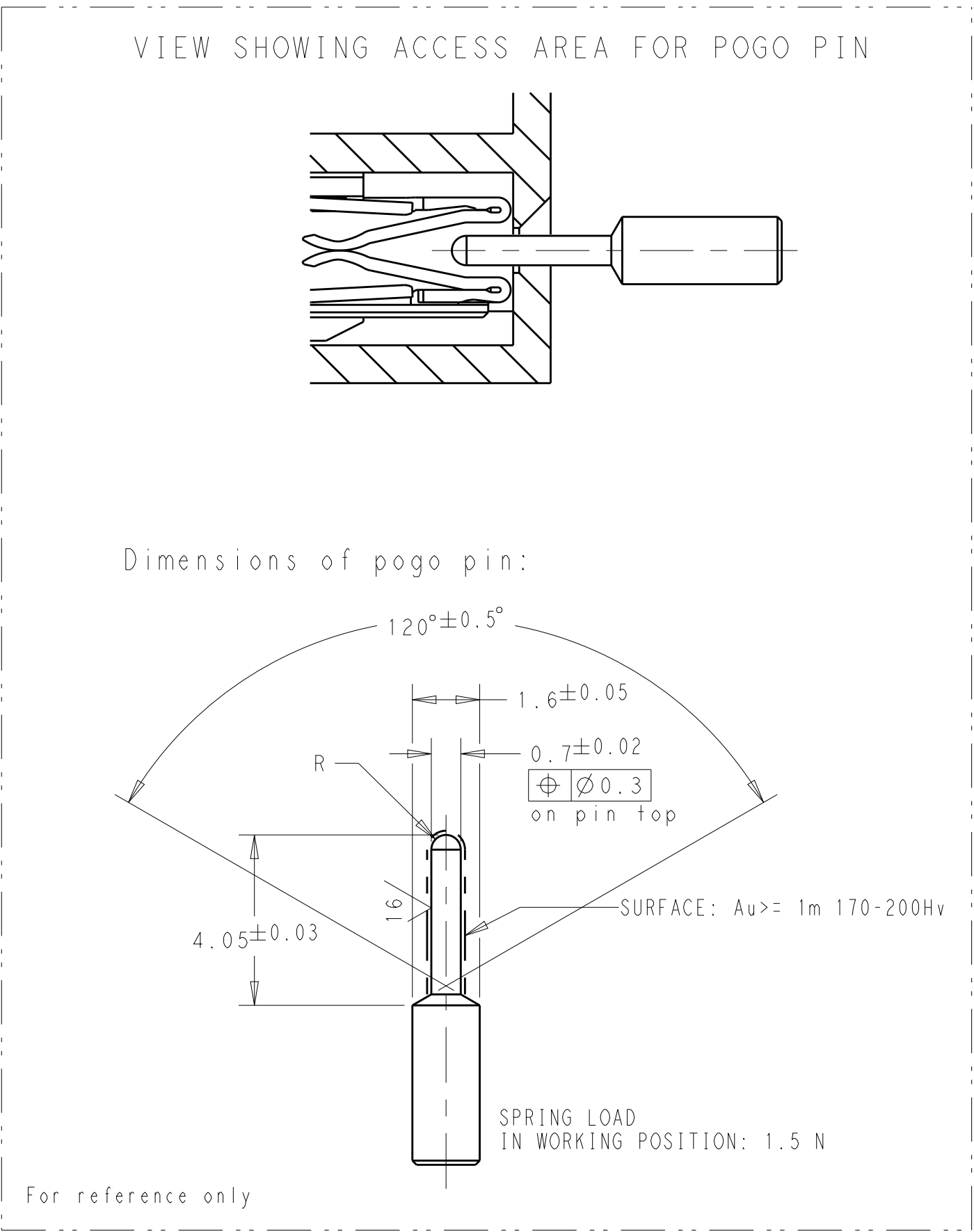
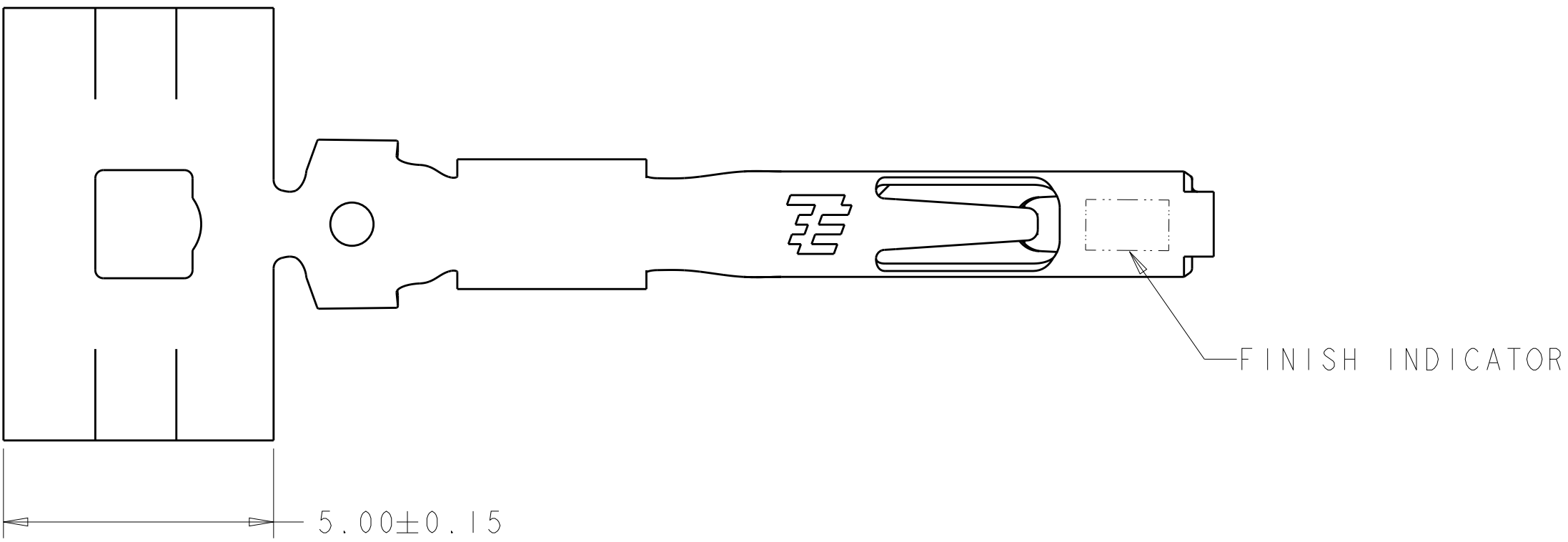
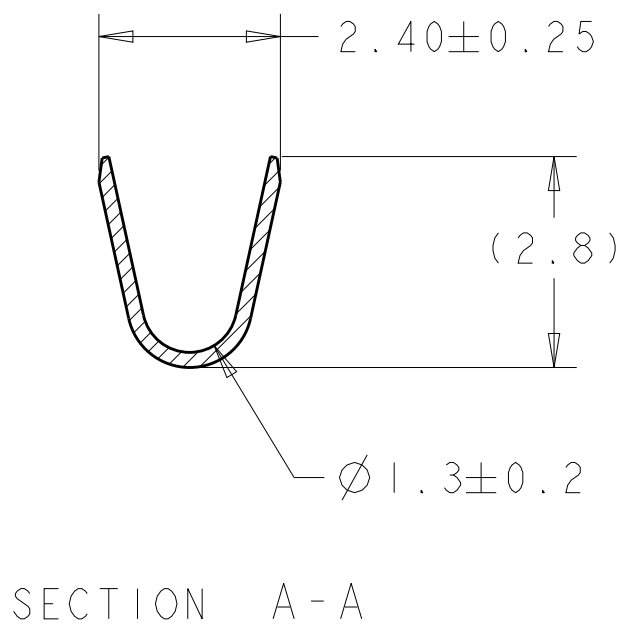
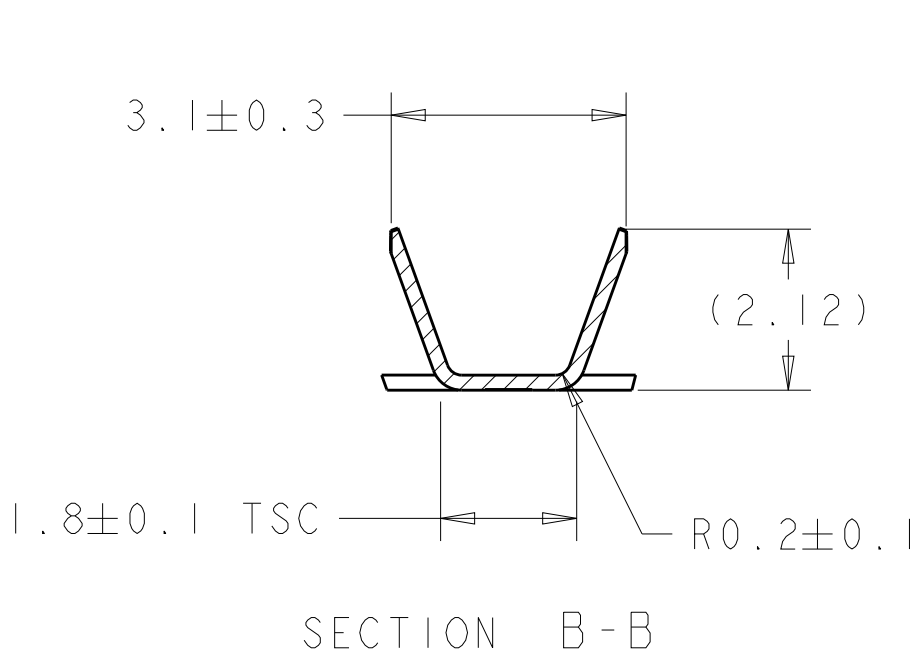
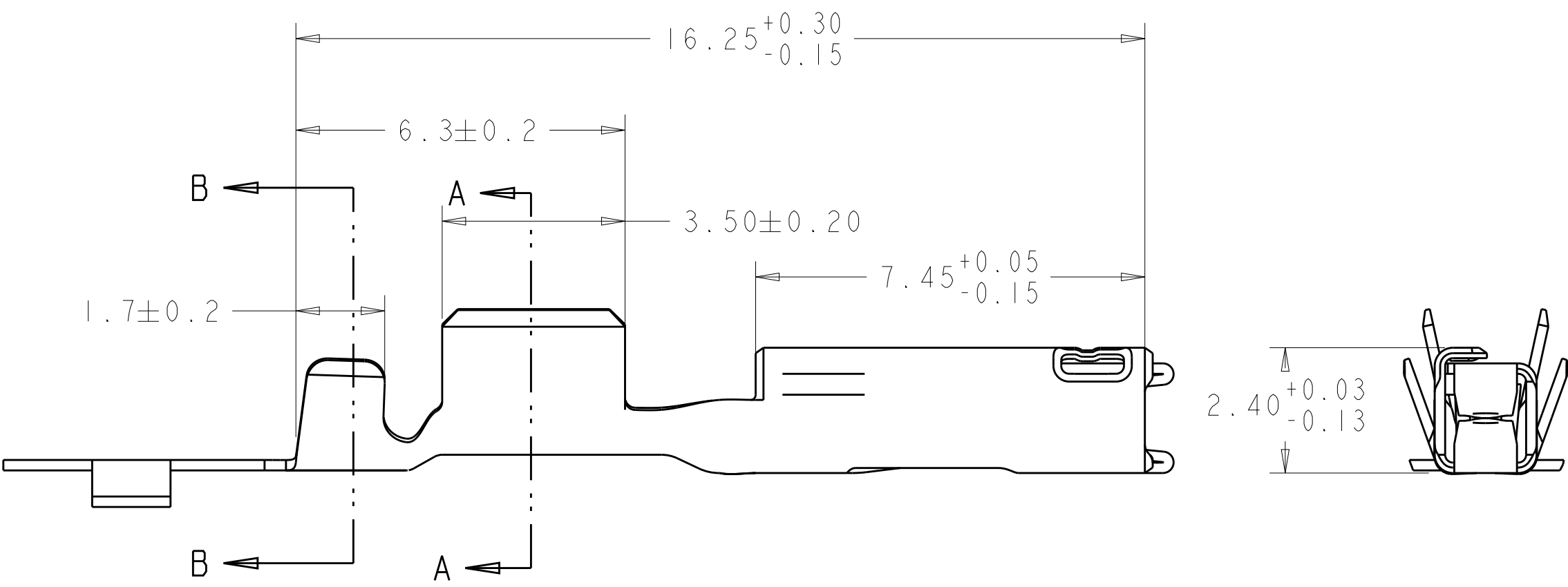


REVISIONS					
P	LTR	DESCRIPTION	DATE	DWN	APVD
	A	RELEASED PER ECO-13-008765	24MAY2013	DLD	WTW
	A1	REVISED PER ECO-13-015719	07OCT2013	DLD	WTW
	A2	REVISED PER ECO-14-013933	24SEP2014	DLD	WTW



- △ MATERIAL: COPPER ALLOY
- △ FINISH: PRE-PLATED WITH 1.00µm MIN TIN-SILVER PLATE. (APPLIES TO CONTACT ALL OVER)
- △ FINISH: PRE-PLATED WITH 2.00µm MIN TIN. (APPLIES TO CONTACT ALL OVER)
- △ FINISH: PRE-PLATED WITH 3.00µm MIN SILVER IN CONTACT AREA. SILVER FLASH OVER REMAINDER OF PART.
5. DIE FEED IS 8.00mm
- △ OPTIMOL (UNDILUTED) LUBRICATION IN THIS AREA.
7. TERMINAL CRIMPED TO CABLE WITH OUTSIDE DIAMETER GREATER THAN 2.06mm IS NOT APPROVED FOR USE WITH STANDARD GET CIRCUIT CAVITY DESIGN.
8. FOR SILVER PLATING ON P/N 1924782-3, TARNISH IS ACCEPTABLE. ELECTRICAL PERFORMANCE IS NOT AFFECTED BY TARNISH ON ANY OF THE SILVER PLATED SURFACES OF THE TERMINAL.



S	△4	1924782-3
NONE	△3	1924782-2
T	△2	1924782-1
FINISH INDICATOR	FINISH	PART NUMBER

THIS DRAWING IS A CONTROLLED DOCUMENT.		DWN H. MOLL 21NOV2007	TE Connectivity		
DIMENSIONS: mm		CHK F. KINSEY 21NOV2007			
TOLERANCES UNLESS OTHERWISE SPECIFIED:		APVD F. KINSEY 21NOV2007	NAME		
0 PLC ±		PRODUCT SPEC	GET FEMALE TERMINAL, 1.20mm, THIN, 1.00mm SQ		
1 PLC ±		APPLICATION SPEC			
2 PLC ±0.15		114-13236	SIZE	CAGE CODE	DRAWING NO
3 PLC ±		WEIGHT	A1	00779	©=1924782
4 PLC ±		CUSTOMER DRAWING	SCALE	10:1	SHEET 1 OF 1
ANGLES FINISH					REV A2