

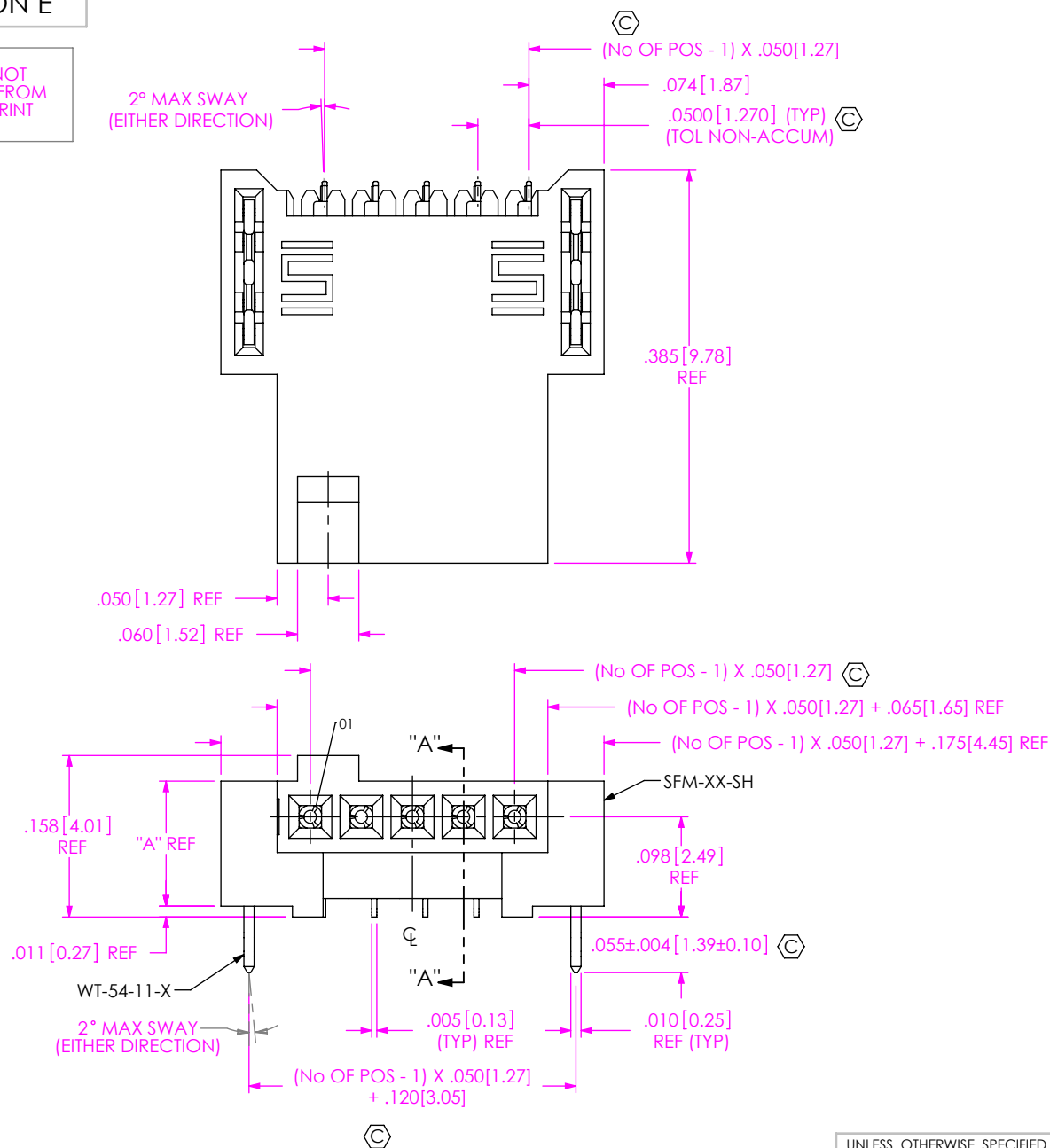
DO NOT
SCALE FROM
THIS PRINT

FIG 1
SFM-105-02-X-SH SHOWN

NOTES:

1. Ⓢ REPRESENTS A CRITICAL DIMENSION.
2. MAXIMUM BURR ALLOWANCE: .0015[0.038].
3. MINIMUM PUSHOUT FORCE: .5 LB.
4. NOT RECOMMENDED FOR INVERTED REFLOW SOLDER.
5. FOR QUANTITIES UP TO 49 PIECES, NO LEADER, TRAILER, OR REEL WILL BE SUPPLIED.
FOR QUANTITIES OF 50-124 PIECES, NO LEADER OR TRAILER WILL BE SUPPLIED.

SFM-1XX-XX-X-XH-TR

No OF POSITIONS
-05 THRU -30, *-31 THRU *-50
(PER ROW)

PACKAGE
-TR: TAPE & REEL
(SEE NOTE 5)

LEAD STYLE
-02

ROW SPECIFICATION
-SH: SINGLE HORIZONTAL
-DH: DOUBLE HORIZONTAL

PLATING SPECIFICATION
-L: 10μ" SELECTIVE GOLD IN CONTACT
AREA, MATTE TIN ON TAIL
-S: 30μ" SELECTIVE GOLD IN CONTACT
AREA, MATTE TIN ON TAIL

(* = NOT TOOLED)

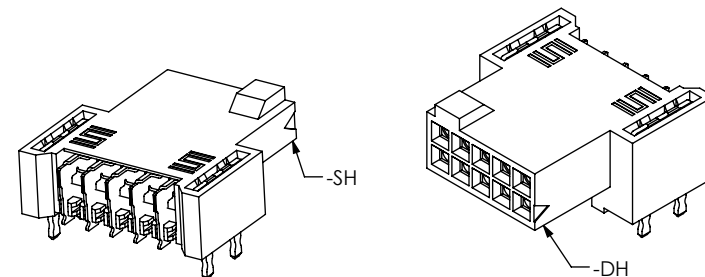


TABLE 2

ROW SPEC	"A"
-SH	.123 [3.12]
-DH	.173 [4.39]

TABLE 1

No. OF POS	—	—
-05 THRU -30	.004[0.10]	.004[0.10]
*-31 THRU *-50	.006[0.15]	.006[0.15]

(*= NOT TOOLED)

UNLESS OTHERWISE SPECIFIED,
DIMENSIONS ARE IN INCHES.

TOLERANCES ARE:

DECIMALS ANGLES
.XX: ±.01[0.3] 2°
.XXX: ±.005[0.13]
.XXXX: ±.0020[0.051]

* PROPRIETARY NOTE *

THIS DOCUMENT CONTAINS CONFIDENTIAL AND
PROPRIETARY INFORMATION AND ALL DESIGN,
MANUFACTURING, REPRODUCTION, USE, PATENT RIGHTS
AND SALES RIGHTS ARE EXPRESSLY RESERVED BY SAMTEC,
INC. THIS DOCUMENT SHALL NOT BE DISCLOSED, IN WHOLE
OR PART, TO ANY UNAUTHORIZED PERSON OR ENTITY NOR
REPRODUCED, TRANSFERRED OR INCORPORATED IN ANY
OTHER PROJECT IN ANY MANNER WITHOUT THE EXPRESS
WRITTEN CONSENT OF SAMTEC, INC.

MATERIAL: DO NOT SCALE DRAWING SHEET SCALE: 6:1
INSULATOR: VECTRA E130i UL 94V-0, COLOR: BLACK
CONTACT: PHOS BRONZE

samtec

520 PARK EAST BLVD, NEW ALBANY, IN 47150
PHONE: 812-944-6733 FAX: 812-948-5047
e-Mail: info@SAMTEC.com code 55322

DESCRIPTION:
.050 x .050 SOCKET STRIP ASSEMBLY

DWG. NO.
SFM-1XX-XX-X-XH-TR

BY: VICKY Z 11/22/2010 SHEET 1 OF 3

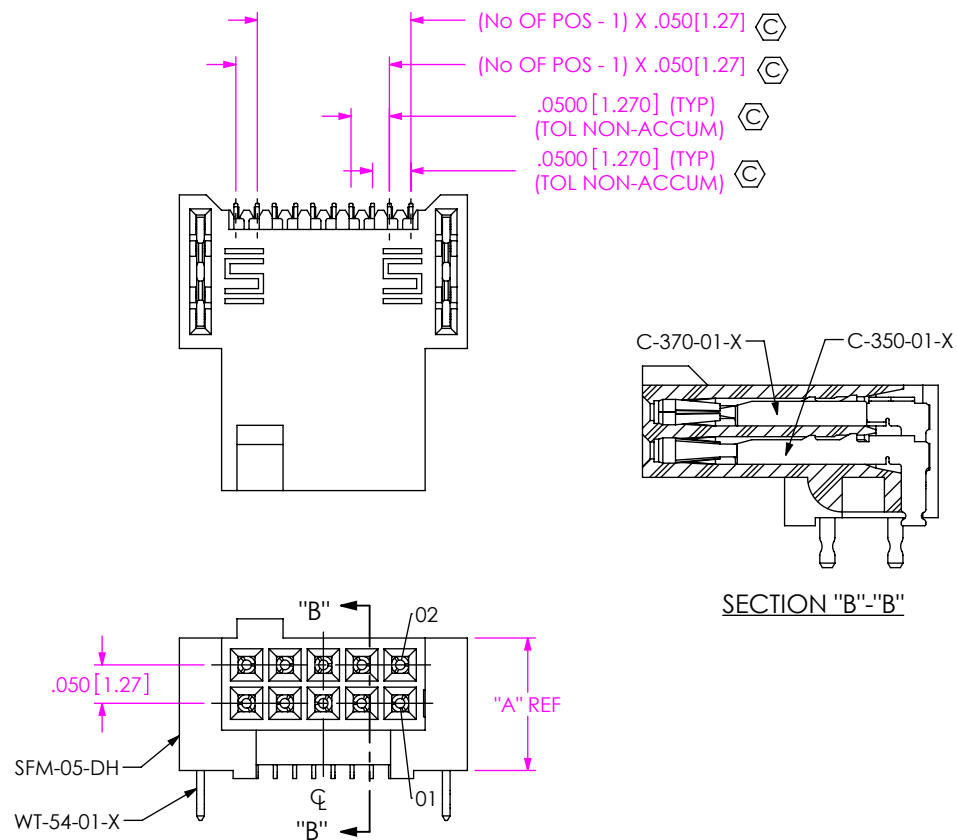
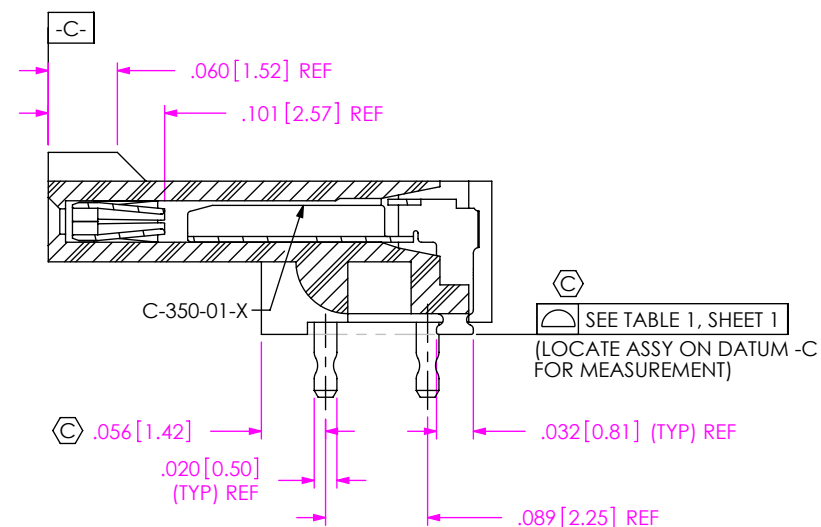


FIG 2
SFM-105-02-X-DH SHOWN
(DIFFERENT AS SHOWN, OTHERWISE SAME AS FIG 1)



PROPRIETARY NOTE
THIS DOCUMENT CONTAINS CONFIDENTIAL AND PROPRIETARY INFORMATION AND ALL DESIGN, MANUFACTURING, REPRODUCTION, USE, PATENT RIGHTS AND SALES RIGHTS ARE EXPRESSLY RESERVED BY SAMTEC, INC. THIS DOCUMENT SHALL NOT BE DISCLOSED, IN WHOLE OR PART, TO ANY UNAUTHORIZED PERSON OR ENTITY NOR REPRODUCED, TRANSFERRED OR INCORPORATED IN ANY OTHER PROJECT IN ANY MANNER WITHOUT THE EXPRESS WRITTEN CONSENT OF SAMTEC, INC.

DO NOT SCALE DRAWING

SHEET SCALE: 4:1

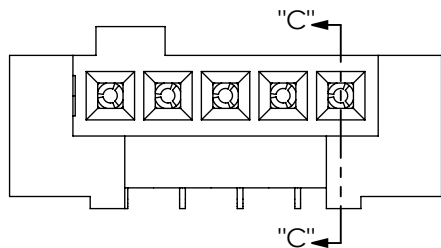
samtec

520 PARK EAST BLVD, NEW ALBANY, IN 47150
PHONE: 812-944-6733 FAX: 812-948-5047
e-Mail: info@SAMTEC.com code 55322

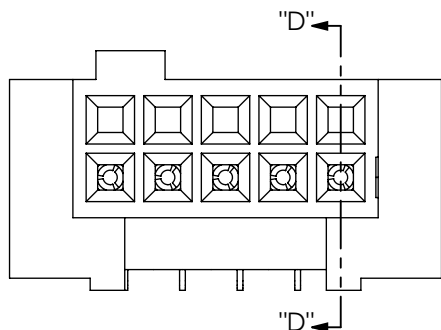
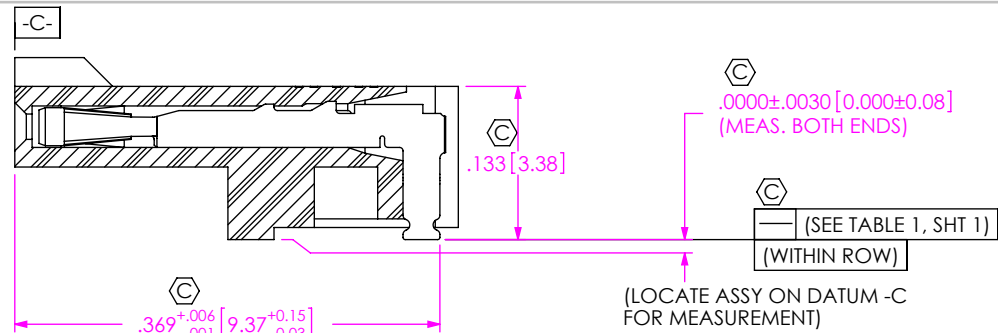
DESCRIPTION: .050 x .050 SOCKET STRIP ASSEMBLY

DWG. NO. SFM-1XX-XX-X-XH-TR

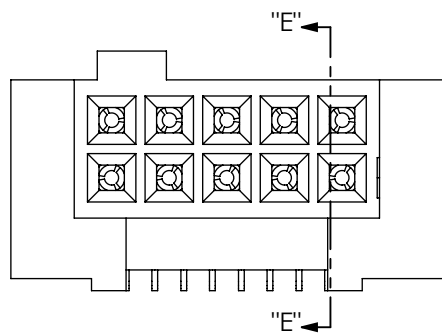
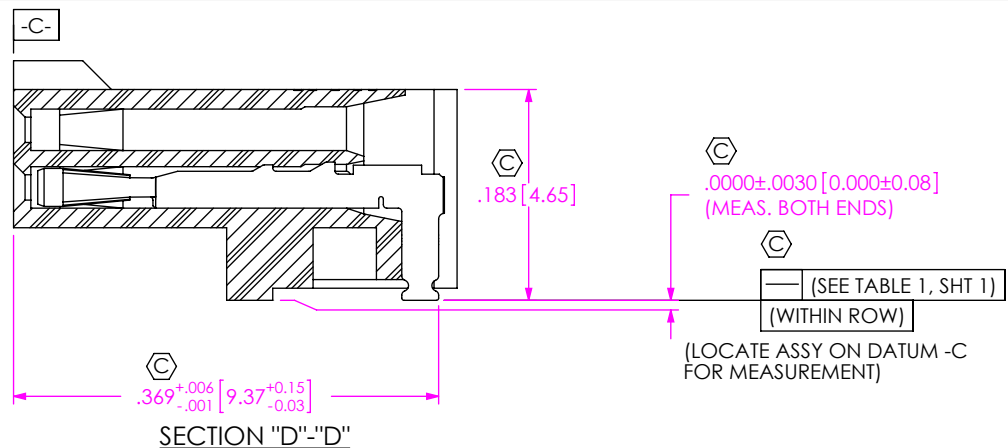
BY: VICKY Z 11/22/2010 SHEET 2 OF 3



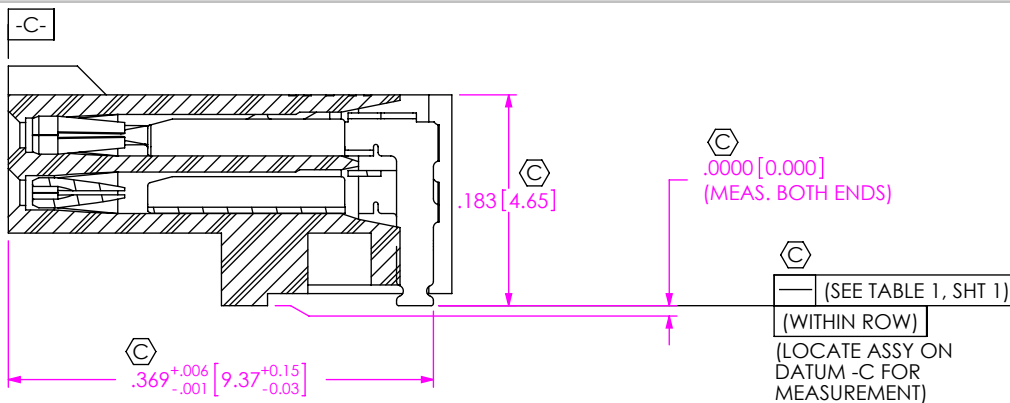
IN-PROCESS 1
FILL C-350-01-X
(FOR -SH ONLY)



IN-PROCESS 1
FILL C-350-01-X
(FOR -DH ONLY)



IN-PROCESS 2
FILL C-370-01-X
(FOR -DH ONLY)



PROPRIETARY NOTE
THIS DOCUMENT CONTAINS
PROPRIETARY INFORMATION.
MANUFACTURING, REPRODUCTION, USE, PATENT RIGHTS
AND SALES RIGHTS ARE EXPRESSLY RESERVED BY SAMTEC,
INC. THIS DOCUMENT SHALL NOT BE DISCLOSED, IN WHOLE
OR PART, TO ANY UNAUTHORIZED PERSON OR ENTITY NOR
REPRODUCED, TRANSFERRED OR INCORPORATED IN ANY
OTHER PROJECT IN ANY MANNER WITHOUT THE EXPRESS
WRITTEN CONSENT OF SAMTEC, INC.

DO NOT SCALE DRAWING

SHEET SCALE: 6:1

samtec

520 PARK EAST BLVD, NEW ALBANY, IN 47150
PHONE: 812-944-6733 FAX: 812-948-5047
e-Mail info@SAMTEC.com code 55322

DESCRIPTION:
.050 x .050 SOCKET STRIP ASSEMBLY

DWG. NO.
SFM-1XX-XX-X-XH-TR

BY: VICKY Z 11/22/2010 SHEET 3 OF 3