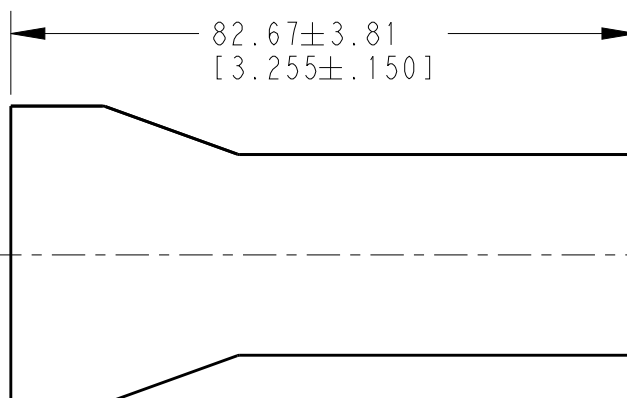
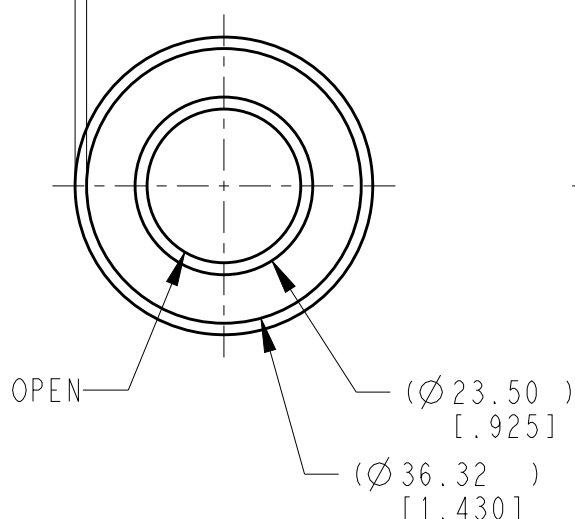


SCALE 1:2

REVISIONS

P	LTR	DESCRIPTION	DATE	DWN	APVD
	A	NEW RELEASE PER ECO-14-013277	27AUG2014	DM	DM
	A1	REVISE PER PCN E-19-014486	16SEP2019	JA	DM


1.52 ± 0.25
 $[.060 \pm .010]$
 MEASURED 6.35 ± 0.64
 $[.250 \pm .025]$
 FROM OPEN END



3. THIS ACCESSORY PART IS PROVIDED WITHOUT TYPICAL TRANSPORTATION INDUSTRY PROCESS CONTROLS. NO VALIDATION TESTING HAS BEEN PERFORMED. CUSTOMER IS RESPONSIBLE FOR DETERMINING PRODUCT PERFORMANCE AND SUITABILITY FOR APPLICATION.
2. TEMPERATURE RATING: -29°C TO $+100^{\circ}\text{C}$ [-20°F TO $+212^{\circ}\text{F}$].
1. THIS PART IS USED ON
 HDP24-24-XXX RECEPTACLES
 HDP26-24-XXX PLUGS
 HD34-24-XXX RECEPTACLES
 HD36-24-XXX PLUGS
 WHERE XXX IS PIN ARRANGEMENTS.

NOTES:

TE INTERNAL PN	DEUTSCH PN
HD30-24BT	HD30-24BT

DIMENSIONS: mm [INCHES]		DWN D.MEYER 27AUG2014		MATERIAL PVC		FINISH GRAY	
TOLERANCES UNLESS OTHERWISE SPECIFIED: 0 PLC \pm 1 PLC \pm 2 PLC \pm 3 PLC ± 0.63 [.025] 4 PLC \pm ANGLES $\pm 0^{\circ} 30' 0''$		CHK I.GRANTCHAROVA 27AUG2014		 TE Connectivity			
		APVD D.MEYER 27AUG2014					
		PRODUCT SPEC		NAME BOOT, SIZE 24 HD30/HDP20 SERIES			
		APPLICATION SPEC		SIZE A 4		CAGE CODE 4AFU8	
WEIGHT 11.72g		CUSTOMER DRAWING		SCALE 1:1		SHEET 1 OF 1	
RESTRICTED TO -		REV A1					