

DESCRIPTION: M12 // 3P // FEMALE // SHIELDED // SOLDER CUP // CABLE MOUNT

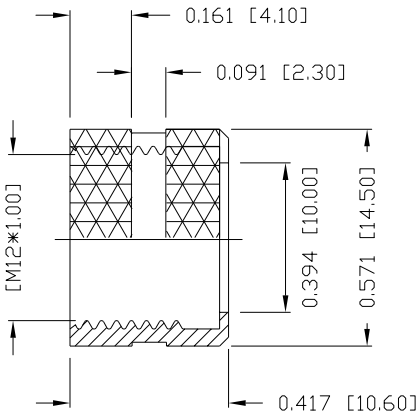
SPECIFICATIONS:

MATERIAL:
HOUSING: PBT UL94V-0, BLACK
CONTACT: GOLD PLATED BRASS
(SEE P/N KEY BELOW)
NUT: NICKEL PLATED BRASS
SHELL: NICKEL PLATED BRASS
O-RING: EPDM, BLACK

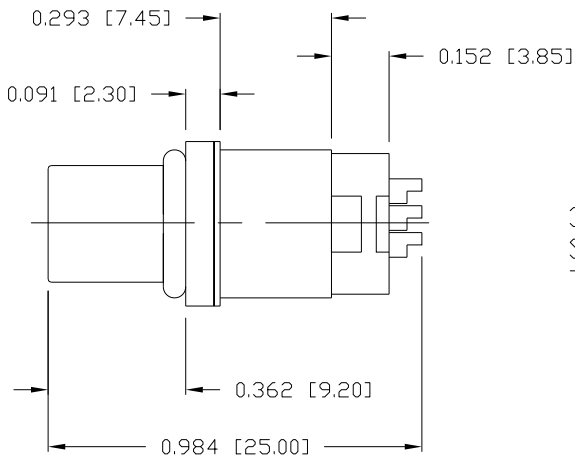
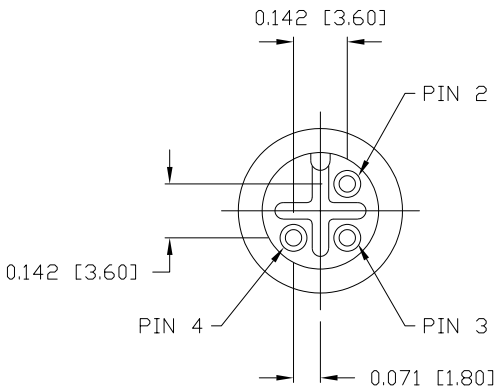
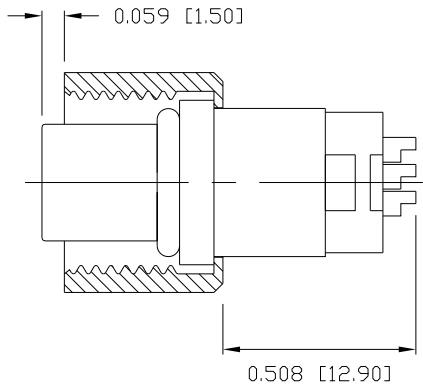
ELECTRICAL:
RATED CURRENT: 4A
RATED VOLTAGE: 250V
INSULATION RESISTANCE: 100 MOhms MIN.
CONTACT RESISTANCE: 10 mOhms MAX.

ENVIRONMENT
OPERATION TEMPERATURE: -40°C TO +85°C
WATER PROOF: IP67

MAX WIRE AWG: 20



NUT



NORCOMP MATING PART NUMBERS:

858-003-103RLU4*
859-003-103R004*
860-L03-113R004*
861-003-113R004*
*Also all material and contact plating variants

858-003-203RLSY

3 = BRASS/NICKEL (B/N) SHELL & NUT
S = STAINLESS STEEL (SS) SHELL & NUT
T = B/N SHELL / SS NUT

1 = GOLD FLASH
4 = 10µ" GOLD

RoHS COMPLIANT



THESE DRAWINGS AND SPECIFICATIONS ARE THE PROPERTY OF NorComp AND SHALL NOT BE REPRODUCED, COPIED OR USED AS THE BASIS FOR THE MANUFACTURE OR SALE OF APPARATUS WITHOUT WRITTEN PERMISSION.

DRAWN:
M. SIGMON

DATE:
03/07/2016

UNITS = inch [mm]

DO NOT SCALE FROM DRAWING

NorComp

SCALE:
NTS

SHEET 1 OF 1

REV 6

DWG NO.

858-003-203RLSY