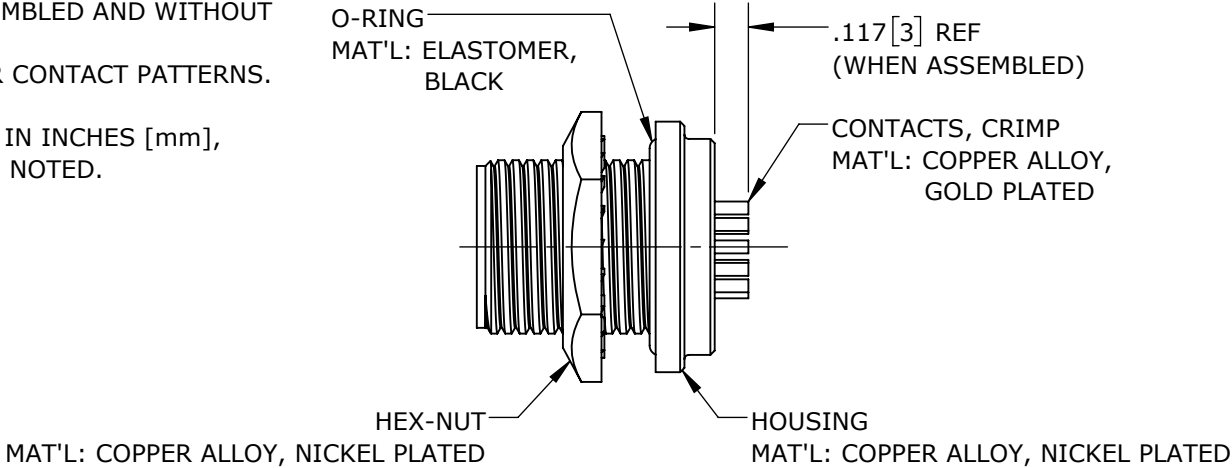
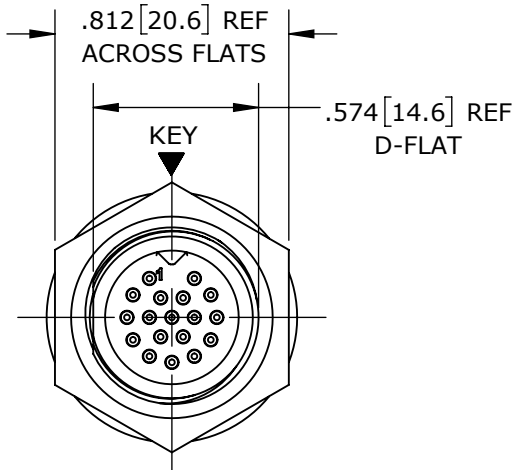


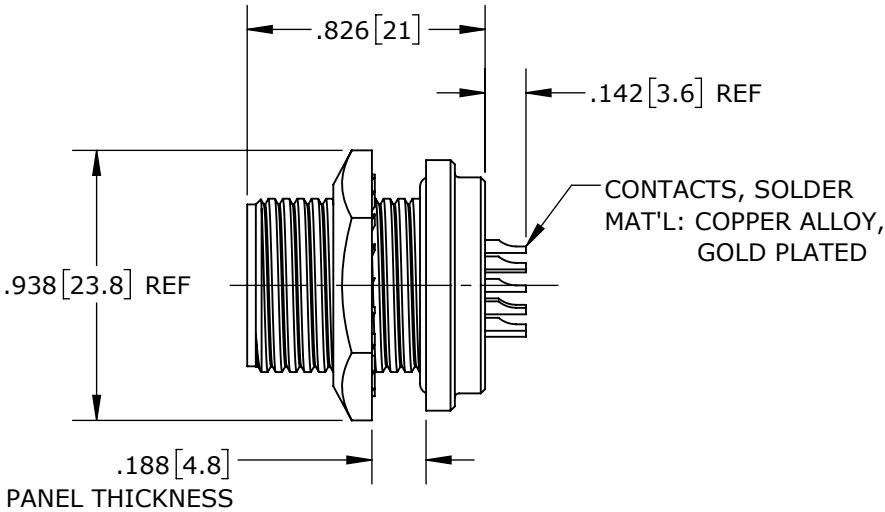
- NOTES:
- 1. CRIMP CONTACTS SUPPLIED UNASSEMBLED AND WITHOUT EPOXY BACKING.
  - 2. REFER TO DRAWING HPSFMISTD FOR CONTACT PATTERNS.
  - 3. HEX-NUT TORQUE: 10-12 IN-LB.
  - 4. DIMENSIONS ARE REFERENCE ONLY, IN INCHES [mm], WITHIN ±0.015 UNLESS OTHERWISE NOTED.



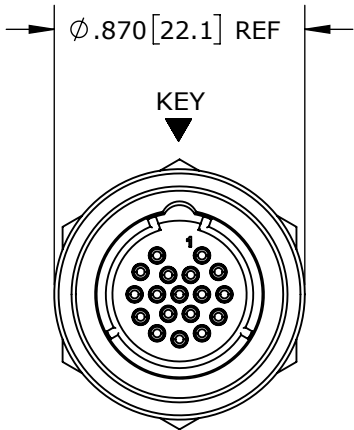
**CRIMP CONTACTS**  
SF7980-18PG-300 SHOWN



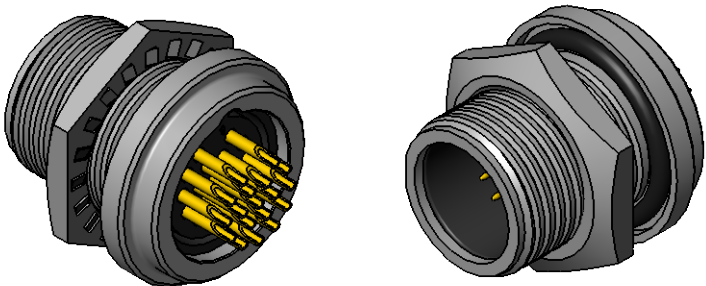
**FACE VIEW**  
SF7982-18PG-300 SHOWN



**SOLDER CONTACTS**  
SF7982-18PG-300 SHOWN



**WIRING END**  
SF7982-18PG-300 SHOWN



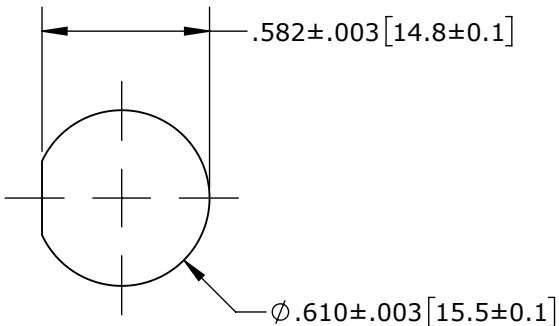
**PANEL-MOUNT CONNECTOR PART NUMBERS:**

**S F 7 9 8 X - X P G - 3 X X**

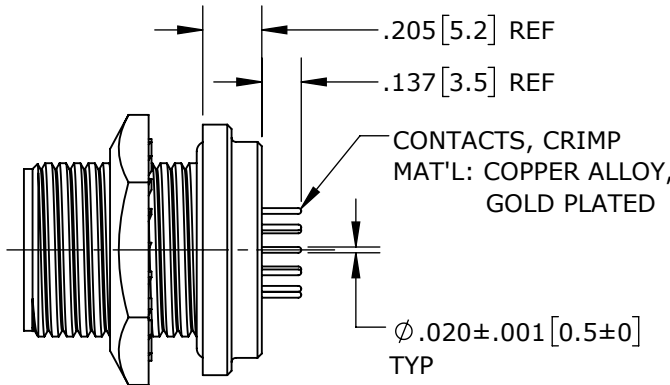
EPOXY BACKING:  
3ES = WITH EPOXY  
300 = WITHOUT EPOXY

# OF CONTACTS: 9 - 18

CONTACTS STYLE:  
0 = CRIMP  
2 = SOLDER  
4 = PC TAIL



**RECOMMENDED PANEL CUT-OUT**




**PC TAIL CONTACTS**  
SF7984-18PG-3ES SHOWN

**CUSTOMER APPROVAL**

THIS DOCUMENT CONTAINS CONFIDENTIAL INFORMATION PROPRIETARY TO CONXALL CORPORATION. ANY REPRODUCTION, DISCLOSURE, OR USE OF THIS DOCUMENT /INFORMATION IS EXPRESSLY PROHIBITED UNLESS AUTHORIZED IN WRITING BY CONXALL CORPORATION.

APPROVED BY: \_\_\_\_\_  
DATE: \_\_\_\_\_

**RoHS COMPLIANT**

0A	PNK	1-30-18	DRAWING CREATED PER PDR17011		
REV.	INIT.	DATE	DESCRIPTION		
ALL INFORMATION ILLUSTRATED IS THE PROPERTY OF "CONXALL CORPORATION." UNAUTHORIZED DUPLICATION OR DISTRIBUTION OF THIS DOCUMENT IS PROHIBITED.			ORIG. DRAWN BY: PNK	DATE: 1-30-18	 601 E. WILDWOOD VILLA PARK, IL 60181
			CHECKED BY:		
ALL UNITS ARE IN FEET, INCHES, FRACTION OF INCHES AND DECIMALS.  UNLESS OTHERWISE SPECIFIED TOLERANCES: 3 PLACE DECIMALS ±.005 ANGLES ±1° FRACTIONS ±1/16			APPROVED BY:		TITLE: PANEL-MOUNT CONNECTOR (9-18) #26 PIN CONTACTS SHIELDED MINI-CON-X STANDARD PRODUCT
			SCALE NTS	SIZE B	
▽	= CRITICAL CHARACTERISTIC FLAG PER SPEC. XXXX		FILE: SF798X-XPG-3XX_CD	DIRECTORY: SLW	PART NUMBER: SF798X-XPG-3XX
					REV 0A